

# RETAIL FOR LEASE CITY CENTER AT OYSTER POINT

NEWPORT NEWS, VA



Colliers



## About the Property

City Center at Oyster Point is a 52-acre, high density, mixed-use development showcasing 250,000 square feet of retail, 1 million square feet of class A office space and 600 elegant residences.

- Suites ranging from 1,135 SF to 5,923 SF of Retail Space available
- Proximity to Jefferson Avenue and the retail/nucleus of Newport News
- Easy access to I-64, the Newport News/Williamsburg International Airport and Public Transportation
- Key Tenants include TASTE Unlimited, LOFT, Strayer University, Cove Tavern, and Juice Bar Cafe



## Offering Summary

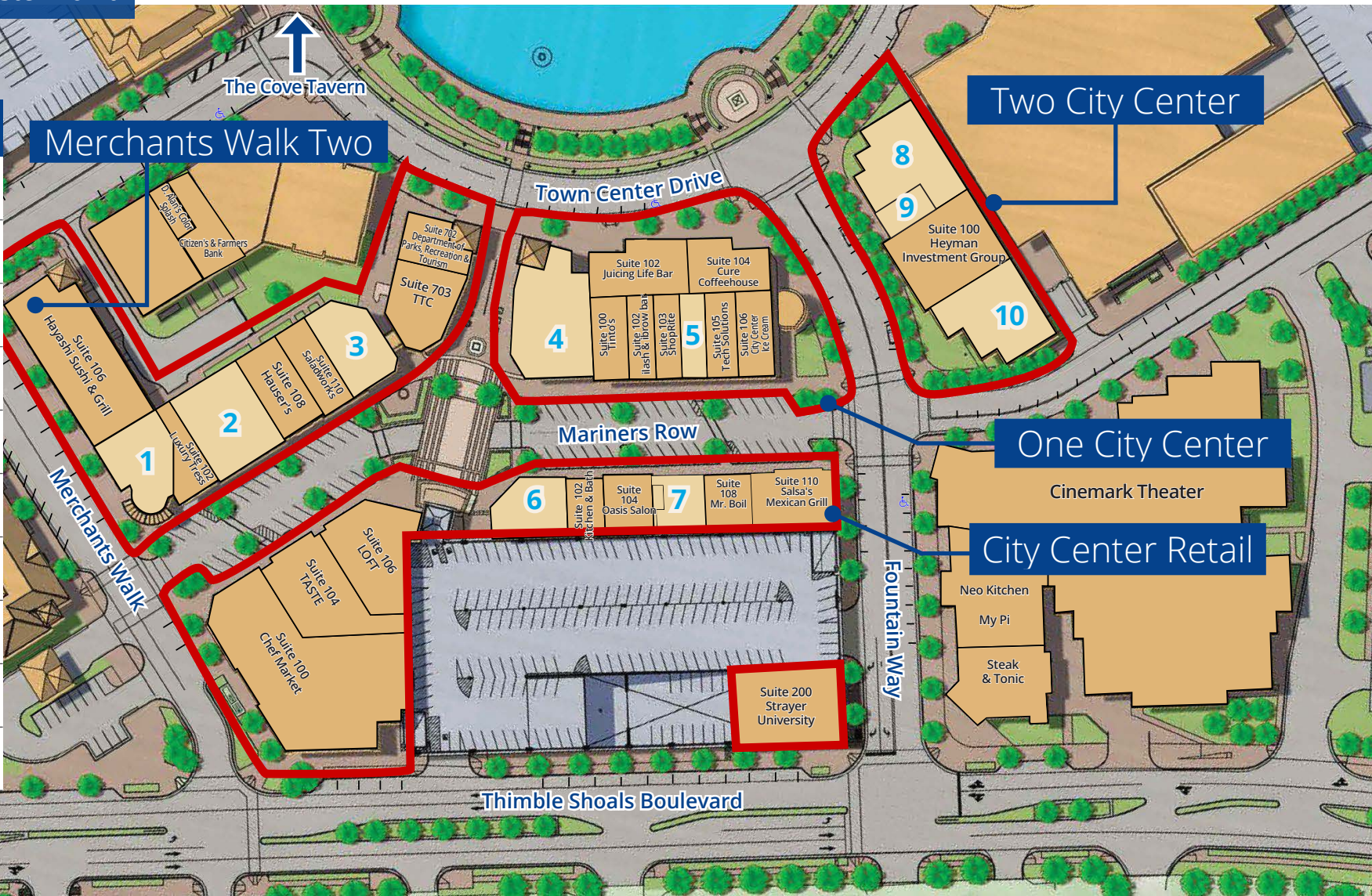
Total SF	250,000 SF
Site Size	52 acres
Timing	Immediate Availability
Traffic Count	16,213 - Thimble Shoals Blvd 48,000- Jefferson Ave





# City Center At Oyster Point

Available Suites	
11820 Merchants Walk Suite 100   4,010 SF	1
701 Mariners Row Suite 104   4,687 SF	2
701 Mariners Row Suite 112   2,831 SF	3
705 Mariners Row Suite W100   5,923 SF	4
707 Mariners Row Suite 104   1,135 SF	5
704 Mariners Row Suite 100   5,598 SF	6
704 Mariners Row Suite 106   4,380 SF	7
11820 Fountain Way Suite 104   7,693 SF	8
11820 Fountain Way Suite 103   1,366 SF	9
11820 Fountain Way Suite 102   4,561 SF	10

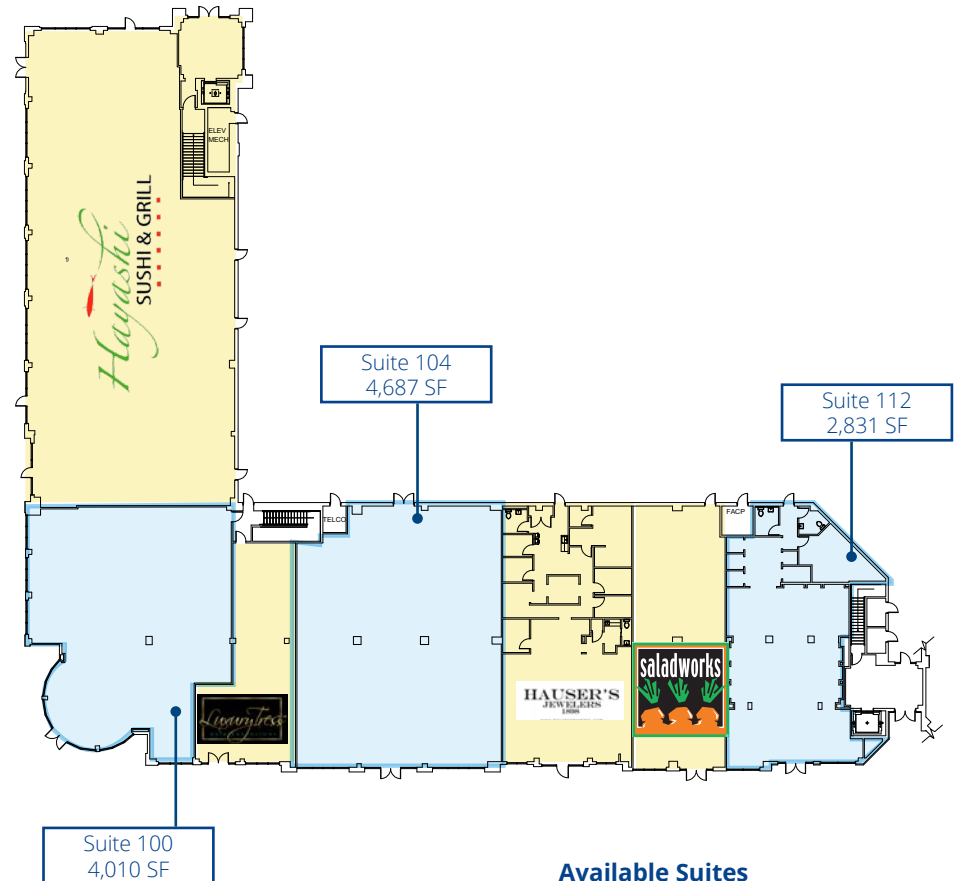




## MERCHANTS WALK TWO

### 11820 MERCHANTS WALK

Merchants Walk Two is located directly across The Point Condominiums and consists of 33,533 SF of commercial space with second floor office space and ground floor retail. Retail Tenants in the building include Hayashi Sushi & Grill and Hauser's Jewelers.



#### Available Suites

Suite 100	4,010 SF
Suite 104	4,687 SF
Suite 112	2,831 SF

# ONE CITY CENTER

705 MARINERS ROW

One City Center is located consists of 95,035 square feet of commercial space with second floor office space and ground floor retail. Retail Tenants in the building include Juicing Life Bar, City Center Ice Cream, ShopRite, Cure and ilash & ibrow bar. The second floor office space is home to Kaufman & Canoles, Regus, Merna Law Group, etc.



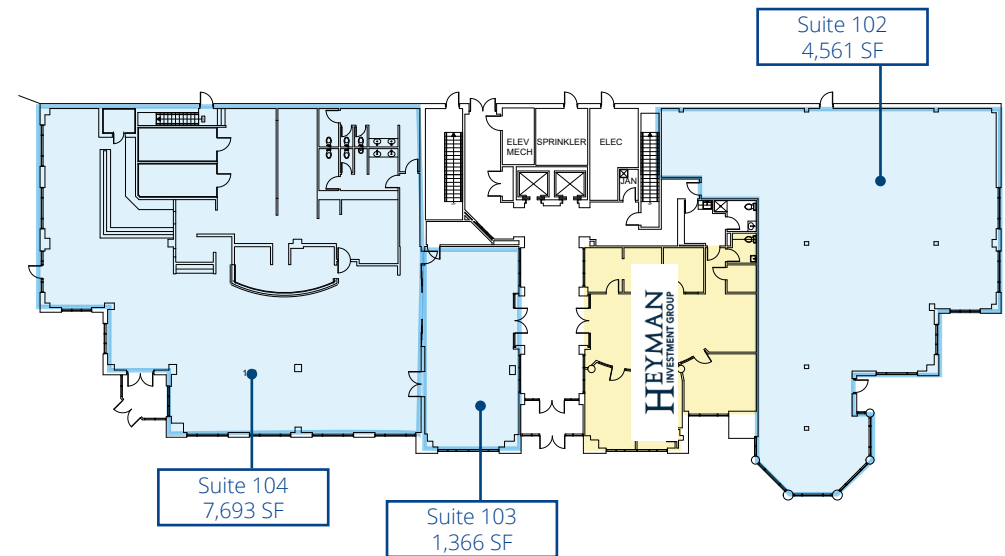
## Available Suites

Suite W100	5,923 SF
Suite 100	1,931SF
Suite 104	1,135 SF

# TWO CITY CENTER

11820 FOUNTAIN WAY

Two City Center consists of 79,055 square feet of commercial space with second floor office space and ground floor retail. The second floor office space is home to HDR, OVM Financial, Merrill and PeopleShare.



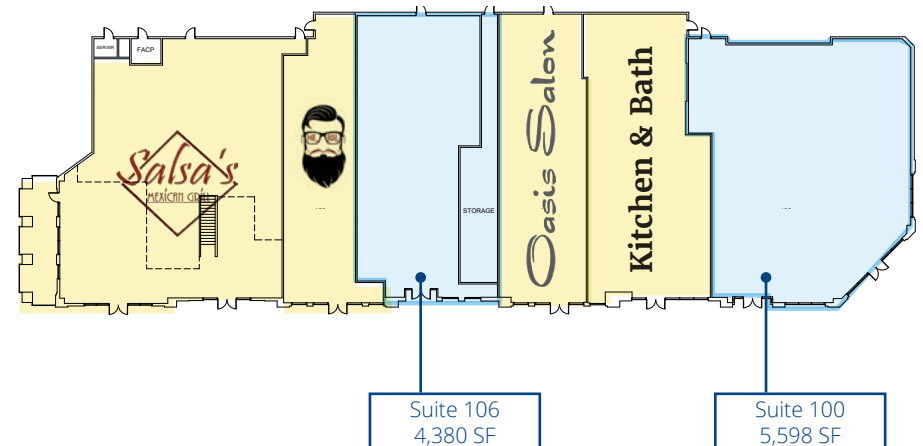
## Available Suites

Suite 103	1,366 SF
Suite 104	7,693 SF
Suite 102	4,561 SF

## CITY CENTER RETAIL

### 701 MERCHANTS WALK

City Center Retail consists of 29,213 square feet of retail space. Retail Tenants in the building include Taste, Loft, Salsa's Mexican Grill, etc.



#### Mariners Row

Suite 100	5,598 SF
-----------	----------

Suite 106	4,380 SF
-----------	----------



City Center At Oyster Point



YOUR  
FAVORITES,  
ALL IN ONE  
PLACE



# City Center At Oyster Point



- 1 Fountain Plaza I
- 2 Fountain Plaza II
- 3 One City Center
- 4 Two City Center
- 5 Town Center One
- 6 Merchants Walk One
- 7 Merchants Walk Two
- 8 City Center Retail

Langley  
Federal Credit Union  
Headquarters

FERGUSON  
Headquarters

Belmont Apts

Marriott Hotel &  
Conference Center

Truist Building

Park Place  
Apartments

Cinemark Theaters

The Point  
Condominiums



## City Center At Oyster Point



### Contact us:

#### Peter Vick

Senior Vice President  
 +1 804 814 9977  
 peter.vick@colliers.com

#### Harrison Hall

Senior Vice President  
 +1 804 814 5299  
 harrison.hall@colliers.com

#### Tyler Brooks

Senior Vice President  
 +1 757 213 8110  
 tyler.brooks@colliers.com

#### Landon Patrick

Associate  
 +1 757 288 1133  
 landon.patrick@colliers.com

#### Colliers

150 West Main St | Suite 1100  
 Norfolk, VA 23510  
 P: +1 757 490 3300

Copyright © 2024 Colliers International. Information herein has been obtained from sources deemed reliable, however its accuracy cannot be guaranteed. The user is required to conduct their own due diligence and verification.