



19720 Jetton Rd - FIRST FLOOR

Cornelius, NC 28031

Lyudmyla Maksimyk

Bluestone Metals & Chemicals, LLC
19720 Jetton Rd, Cornelius, NC 28031
lyudmyla@bluestonemc.com
(704) 770-7654



19720 Jetton Rd

Suites are located on the first floor in desirable, newly renovated office building with close proximity to shops, restaurants, and I-77 giving quick access in less than 30 minutes to Uptown Charlotte and Charlotte Douglas International Airport. Daycare is nearby. 5 min away from Jetton Park and Ramsey Creek Park. Ample parking available on the landscaped grounds. Building amenities include kitchenette, Wi-Fi and private reception area. First floor with easy street access!



:	
Property Type:	Office
Building Class:	B
Rentable Building Area:	3,000 SF
Year Built:	2008
Walk Score ®:	61 (Somewhat Walkable)
:	

1

1st Floor Ste A

Space Available	585 SF
Rental Rate	\$2,750/month
Date Available	Now

Space Use	Office
Lease Term	Negotiable

Premium large suite with private sidewalk entrance, consisting of large office space (496 sqft) and own reception area (89 sqft) at the front of the building.

2

1st Floor Ste B

Space Available	476 SF
Rental Rate	\$2,300/month
Date Available	Now

Space Use	Office
Lease Term	Negotiable

3 office spaces in one! 476 sqft featuring 3 spaces: large common area/office space (275 sqft) and 2 independent offices (100 sqft each).

3

1st Floor Ste D

Space Available	118 SF
Rental Rate	\$650/month
Date Available	Now

Space Use	Office
Lease Term	Negotiable

Ideal single person key man suite.

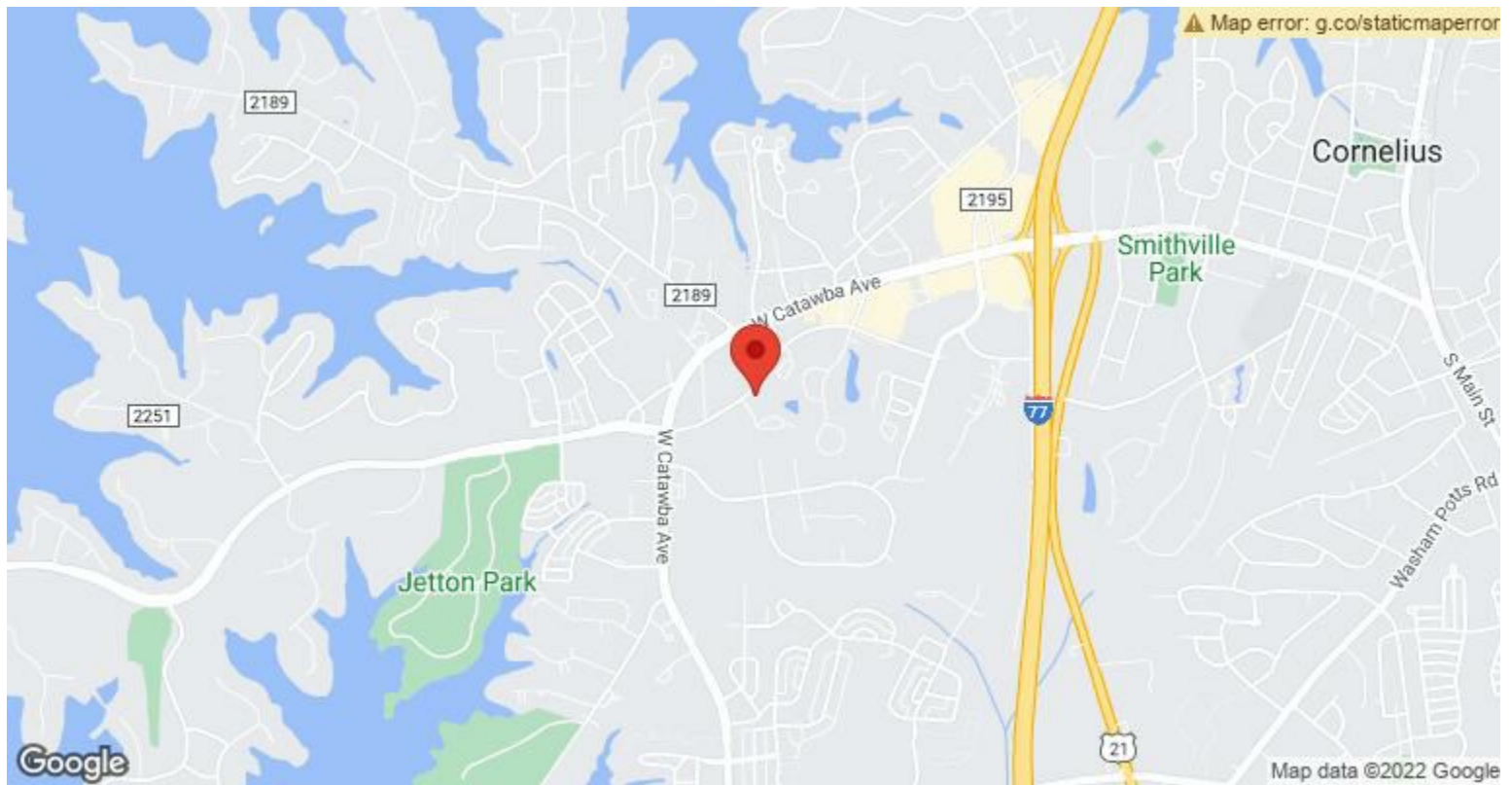
4

1st Floor Ste E

Space Available	220 SF
Rental Rate	\$1,200/month
Date Available	Now

Space Use	Office
Lease Term	Negotiable

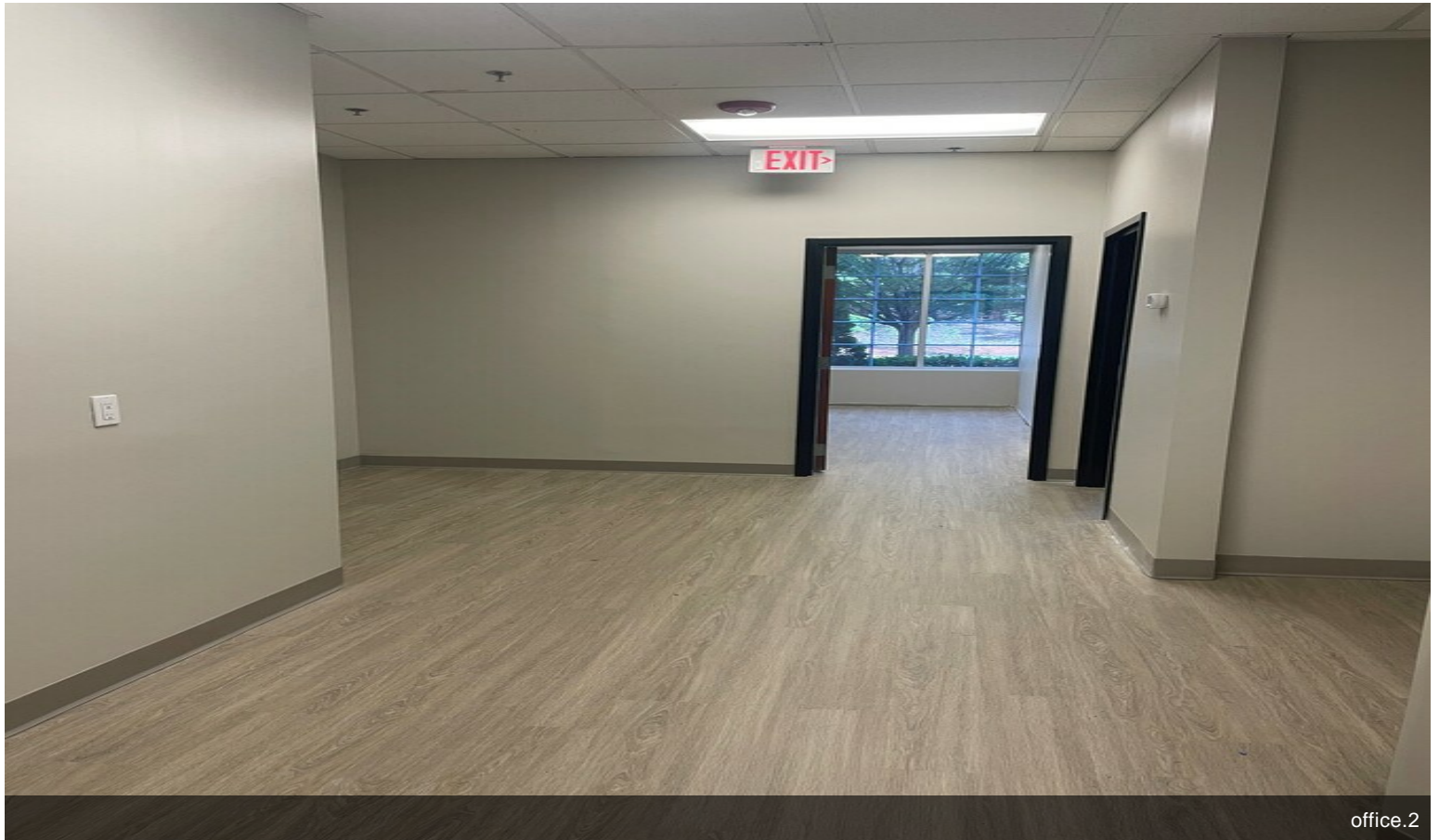
Premium large and bright office.



19720 Jetton Rd, Cornelius, NC 28031

Suites are located on the first floor in desirable, newly renovated office building with close proximity to shops, restaurants, and I-77 giving quick access in less than 30 minutes to Uptown Charlotte and Charlotte Douglas International Airport. Daycare is nearby. 5 min away from Jetton Park and Ramsey Creek Park. Ample parking available on the landscaped grounds. Building amenities include kitchenette, Wi-Fi, private reception area. First floor with easy street access.

Property Photos



Property Photos



office pictures



office pictures 3

Property Photos



office pictures 2



office picture 4

Property Photos



Property Photos

