

496 W. ANN ARBOR TRAIL

SUITE #201

PLYMOUTH, MICHIGAN



**SIGNATURE  
ASSOCIATES**  
KNOW SIGNATURE | KNOW RESULTS

OFFICE FOR LEASE

1,900 Square Feet Available

**HERITAGE PLACE**



## PROPERTY FEATURES

- 1,900 square feet available
- Immaculate move in ready office space in the heart of Downtown Plymouth
- Suite includes 4 office, open bullpen area, (2) restrooms and kitchenette
- New LED lights, paint and LVT flooring throughout
- Ample parking on-site
- Monument signage available
- Lease Rate: \$23.50/sq. ft. Gross



For more information, please contact:

**JASON STOUGH**

(248) 948 4180

[jstough@signatureassociates.com](mailto:jstough@signatureassociates.com)

**SIGNATURE ASSOCIATES**

One Towne Square, Suite 1200

Southfield, MI 48076

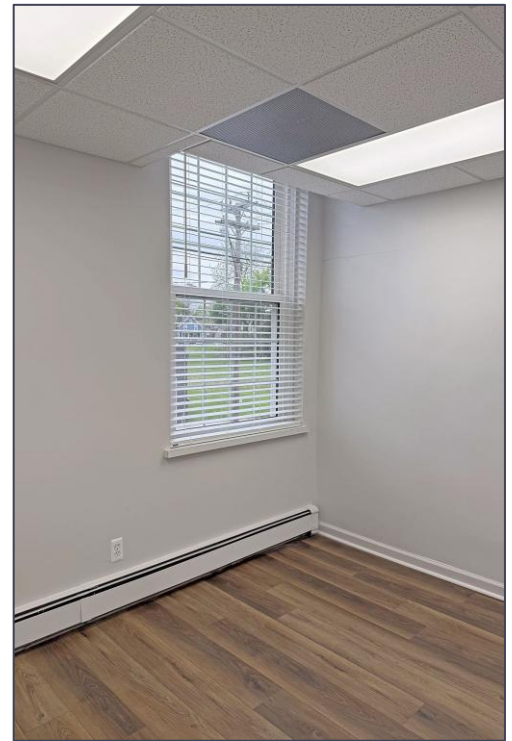
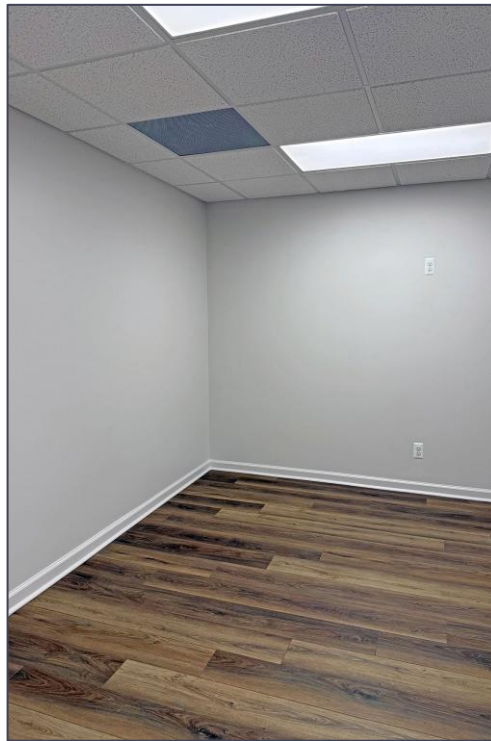
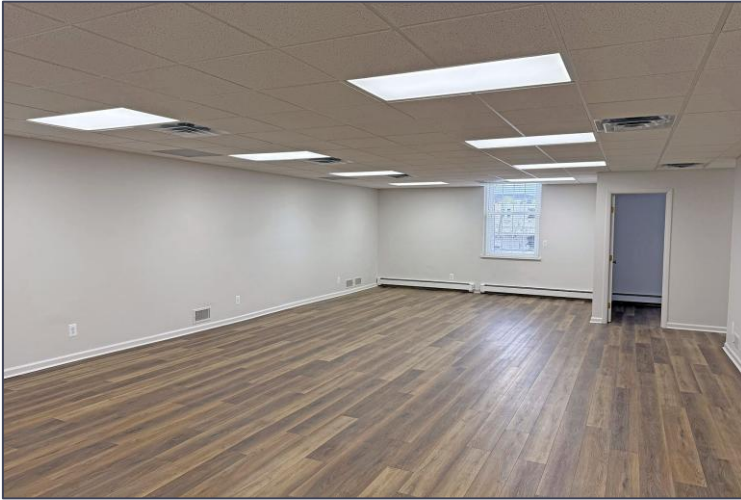
[www.signatureassociates.com](http://www.signatureassociates.com)

# 496 W. Ann Arbor Trail – Plymouth, Michigan

Office For Lease

1,900  
Square Feet  
AVAILABLE

## Interior Photos



For more information, please contact:

**JASON STOUGH**

(248) 948 4180

[jstough@signatureassociates.com](mailto:jstough@signatureassociates.com)

**SIGNATURE ASSOCIATES**

One Towne Square, Suite 1200

Southfield, MI 48076

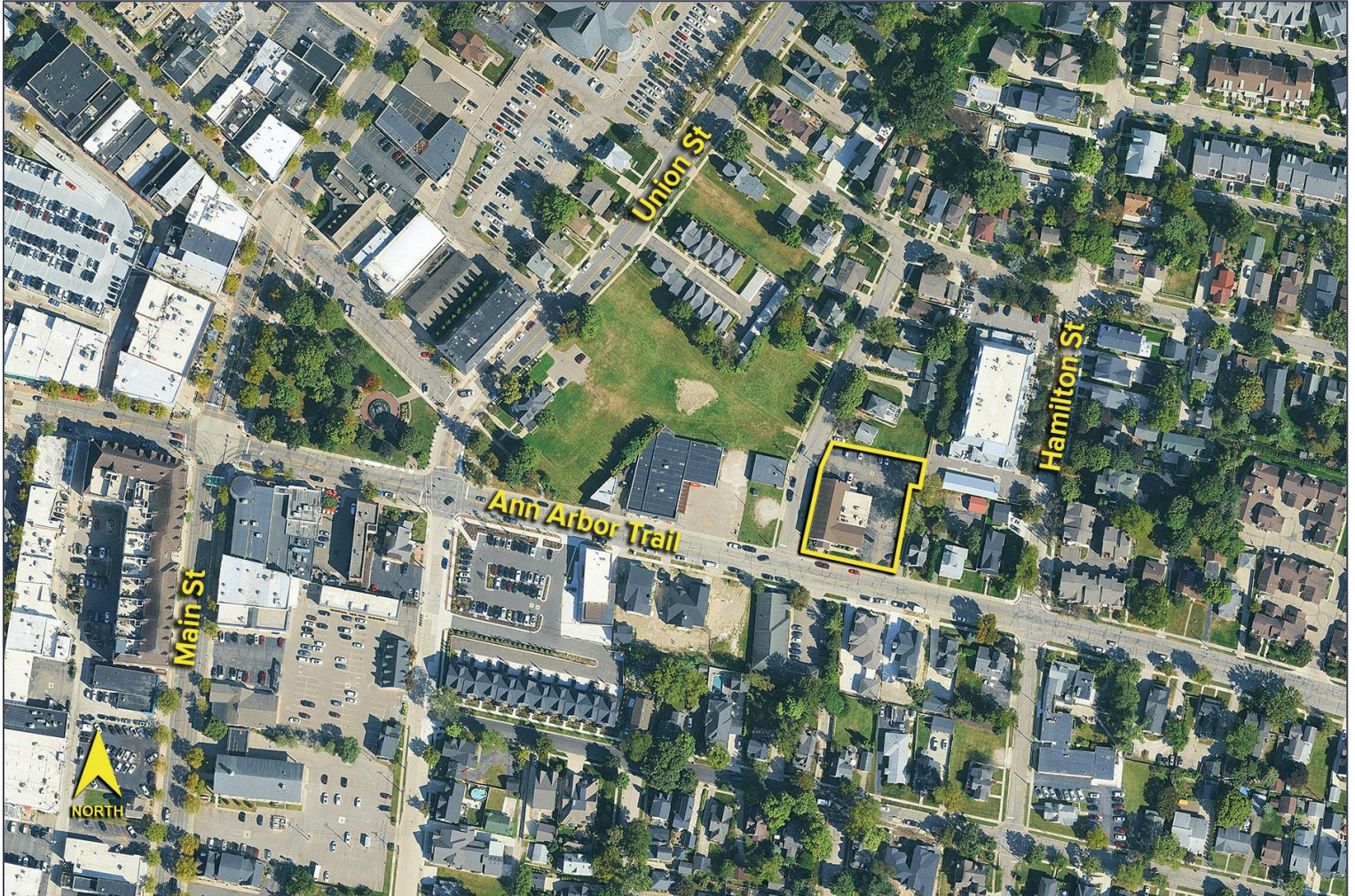
[www.signatureassociates.com](http://www.signatureassociates.com)

# 496 W. Ann Arbor Trail – Plymouth, Michigan

Office For Lease

1,900  
Square Feet  
AVAILABLE

Aerial



For more information, please contact:

**JASON STOUGH**  
(248) 948 4180  
jstough@signatureassociates.com

**SIGNATURE ASSOCIATES**  
One Towne Square, Suite 1200  
Southfield, MI 48076  
www.signatureassociates.com