

# 10105

BANBURRY CROSS DR  
LAS VEGAS, NV 89144

## SUMMERLIN MEDICAL OFFICE III

Turnkey Suites  
Now Available



HEALTHCARE

**JAMIE KRAHNE**  
SENIOR VICE PRESIDENT  
702.216.2363 **CELL**  
jamiiek@dcghealthcare.com  
B.143850/PM.164496

**MIKE TYMCZYN**  
VICE PRESIDENT  
702.216.2371 **DIRECT**  
mtymczyn@dcghealthcare.com  
S.177844



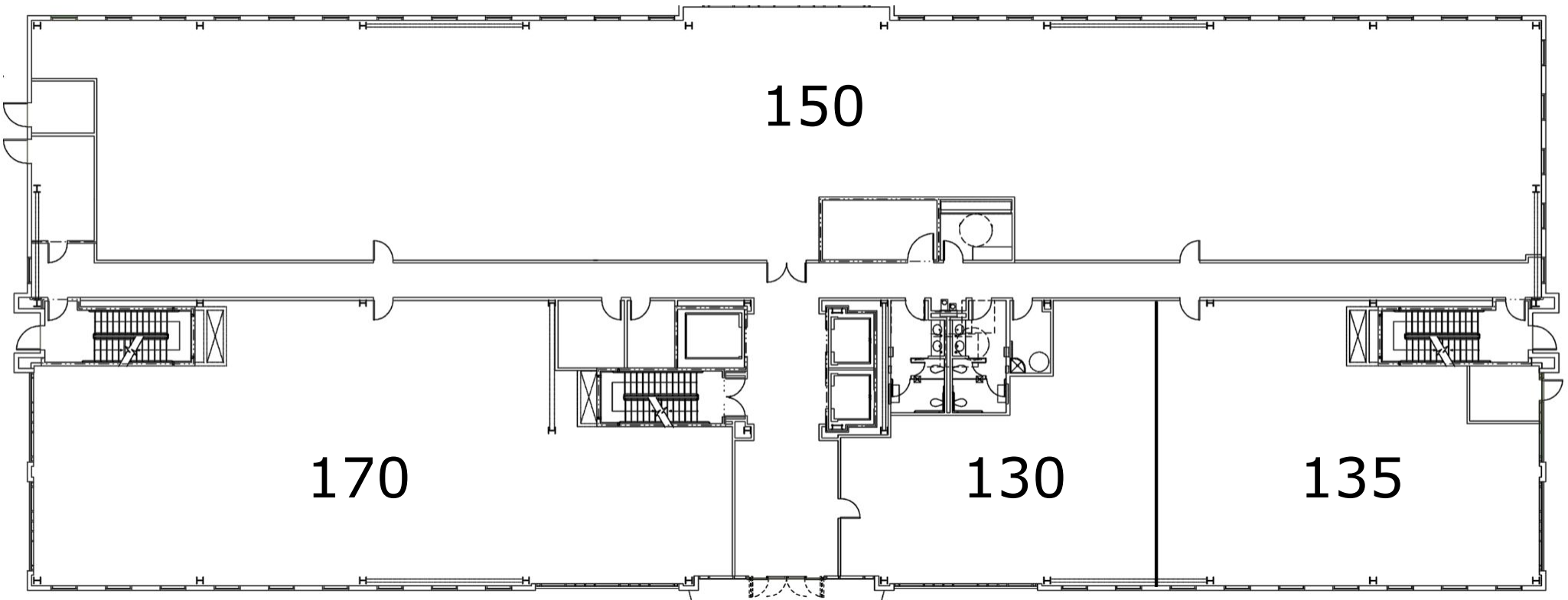
## PROPERTY HIGHLIGHTS

- On the campus of Summerlin Hospital Medical Center
- Professional property management
- Build-to-suit shell space available
- Turn-Key suites available
- Generous tenant improvement allowances
- Current specialties include: **Pediatrics, Cardiology, Orthopedics and Pulmonology**

AREA MAP



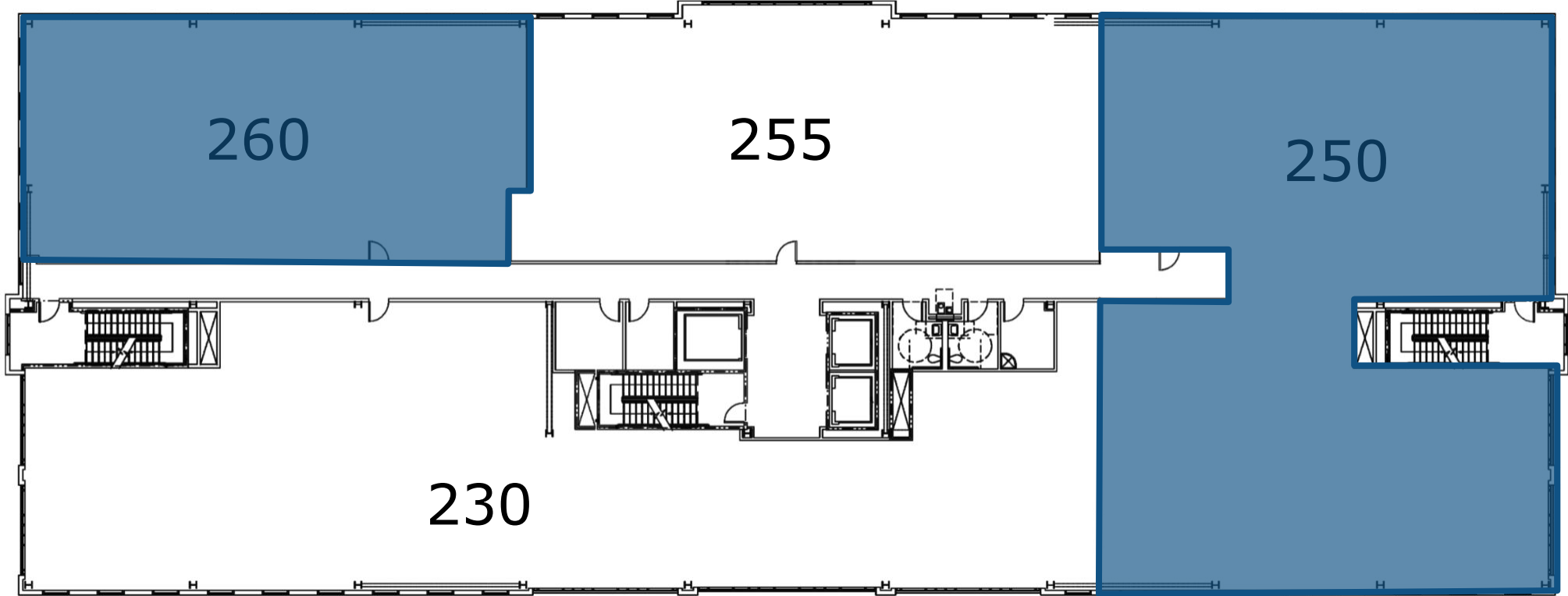
**FIRST FLOOR**



## SECOND FLOOR

## AVAILABLE SUITES

SUITE 250	6,730 SF TURN-KEY
SUITE 260	3,179 SF SHELL

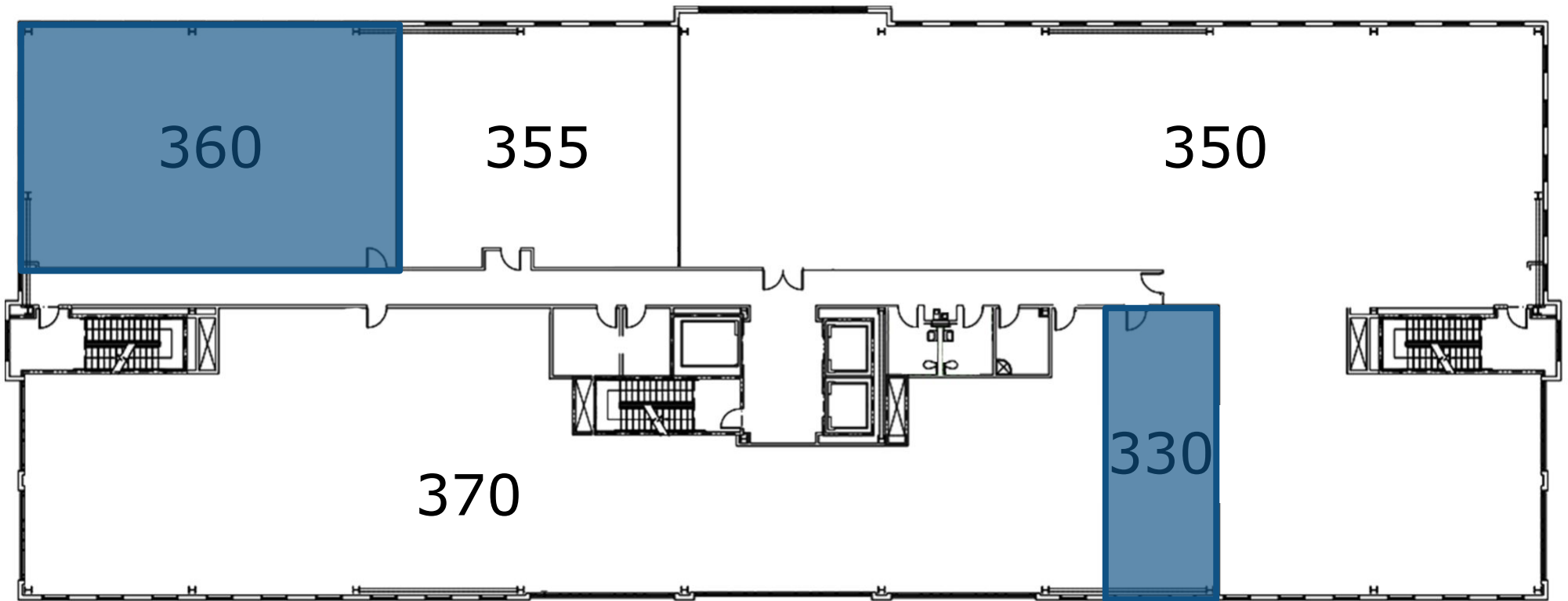




# THIRD FLOOR

## AVAILABLE SUITES

SUITE 330	1,130 SF SHELL
SUITE 360	2,594 SF SHELL

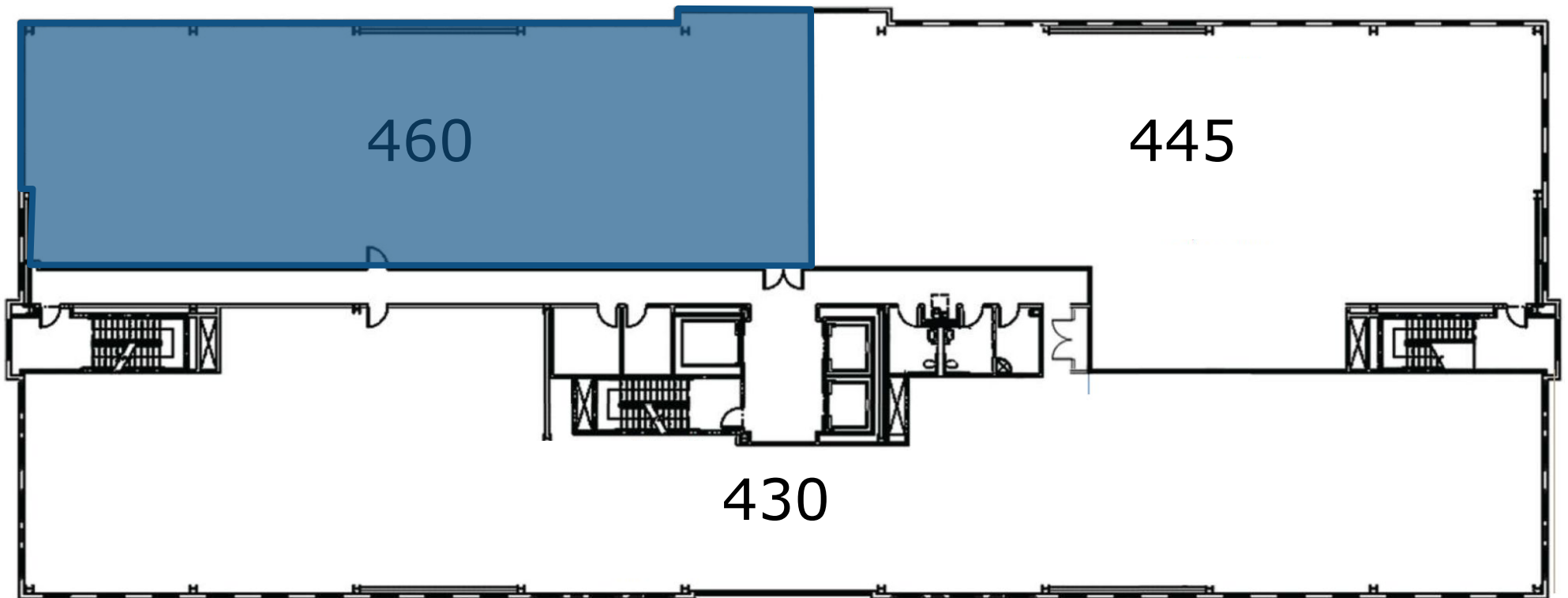


**FOURTH FLOOR**

**AVAILABLE SUITES**

**SUITE 460**

**5,301 SF  
TURN-KEY**



## HOSPITAL SERVICES



### **Cardiovascular**

- Chest Pain Center
- Angioplasty
- Cardiac catheterization
- Pacemaker/defibrillator implants
- Bi-ventricular implants
- Peripheral vascular interventions
- Cardiovascular surgery
- Intravascular Ultrasound

### **Diabetes Treatment Center**

- Inpatient care

### **Dialysis**

- Inpatient care

### **Emergency Services**

- Urgent and emergency care 24/7
- Pediatric ER
- Advanced primary stroke center

### **Endoscopic Procedures**

### **Laboratory Services**

### **Maternity Services**

- Triage
- Antepartum
- Labor and Delivery
- Postpartum
- Level I-II-III Neonatal ICU

### **Orthopedics**

### **Radiology**

- Angiography
- CT scan
- MRI
- Nuclear Medicine
- X-ray
- Digital Mammography

### **Rehabilitation**

- Inpatient Physical Therapy
- Speech Therapy
- Occupational Therapy
- Short-term inpatient rehabilitation unit

### **Surgery**

- Inpatient
- Outpatient
- Robotic

### **Wound Care**

- Inpatient care
- Outpatient care
- Hyperbaric medicine