

8.5 acres North Central Austin

Presented by
David Foster

7300 E US Hwy 290, Austin, TX 78723



Price: \$4,500,000

8.51 acres of undeveloped land along E 290 Highway near 183. Coronado Hills Dr dead ends into the property on the north side. The property is directly next to Austin Achieve Elementary School and the Coronado Hills neighborhood.

7300 E US 290 near Hwy 183 8.5 acres North Central Austin

7300 E US Hwy 290, Austin, TX 78723



8.5 acres in Central North Austin. Northwest near the corner of E Hwy 290 & Hwy 183. Incredible location for this much acreage. Frontage along E Hwy 290 and Coronado Hills Dr. dead ends into the property on the North side of the tract, coming through the Coronado Hills neighborhood. Most of the acreage is level and gently slopes for easy development and good drainage. Beautiful Little Walnut Creek runs along the eastern border of the property offering great views.

Travis County PID 226844. Currently zoned office, GO-CO-NP. Previously zoned multi-family. Great location for office, but also, considering Austin City Council's appetite for high density, there may be a great opportunity for a zoning change and development of many homes on small lots, townhome or condo developments, or multi-family. This may also be a great site for a hotel, with great access to the airport, Mueller, and downtown Austin.

Several acres ready for development within North-central Austin.



David Foster

david@longriverrealestate.com
(512) 751-1100

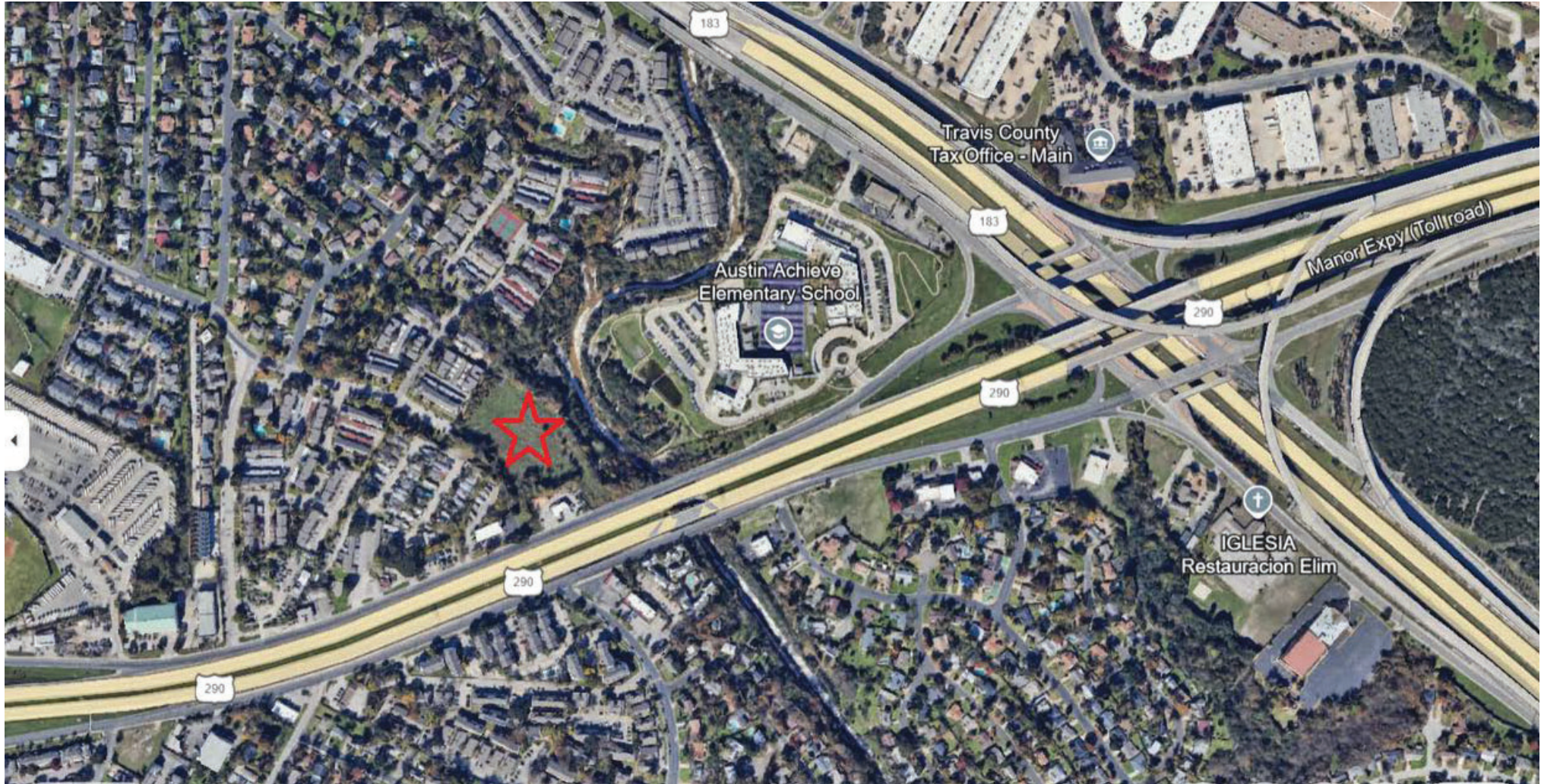
David Foster

7301 N FM 620 Rd, Suite 155-158
Austin, TX 78726

7300 E US 290 near Hwy 183 8.5 acres North Central Austin

7300 E US Hwy 290, Austin, TX 78723

Property Starred, Intersection is US 290 & Hwy 183



7300 E US 290 near Hwy 183 8.5 acres North Central Austin

7300 E US Hwy 290, Austin, TX 78723

Property Photos



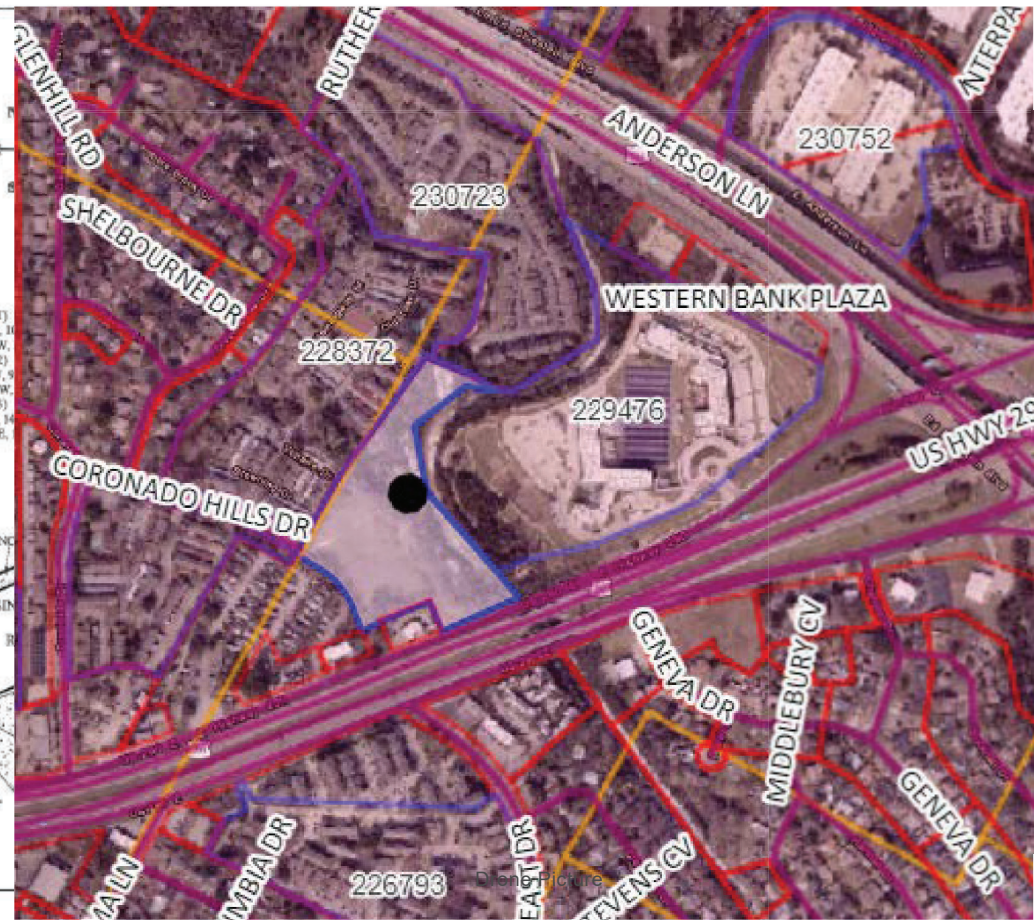
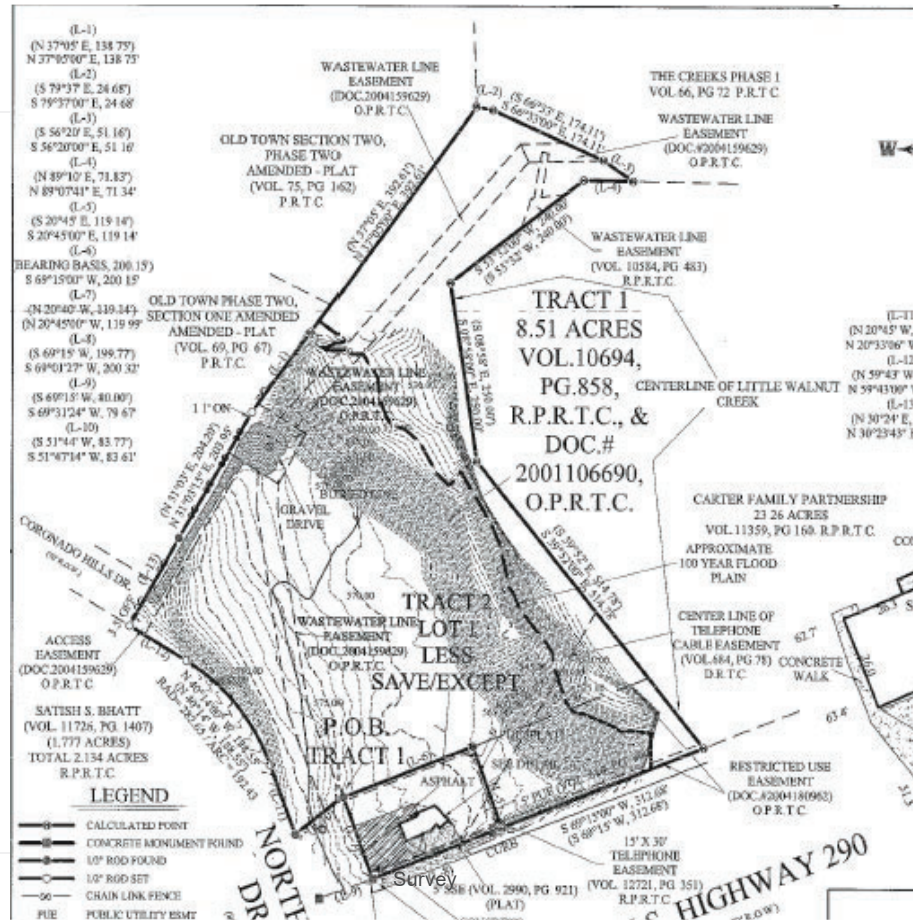
Mini cliff on Little Walnut Creek



Drone Picture

7300 E US 290 near Hwy 183 8.5 acres North Central Austin

7300 E US Hwy 290, Austin, TX 78723



7300 E US 290 near Hwy 183 8.5 acres North Central Austin

7300 E US Hwy 290, Austin, TX 78723

Property Photos



Flat Acreage



Little Walnut Creek and E Highway 290

7300 E US 290 near Hwy 183 8.5 acres North Central Austin

700 E US Hwy 290, Austin, TX 78723

Property Photos



Little Walnut Creek

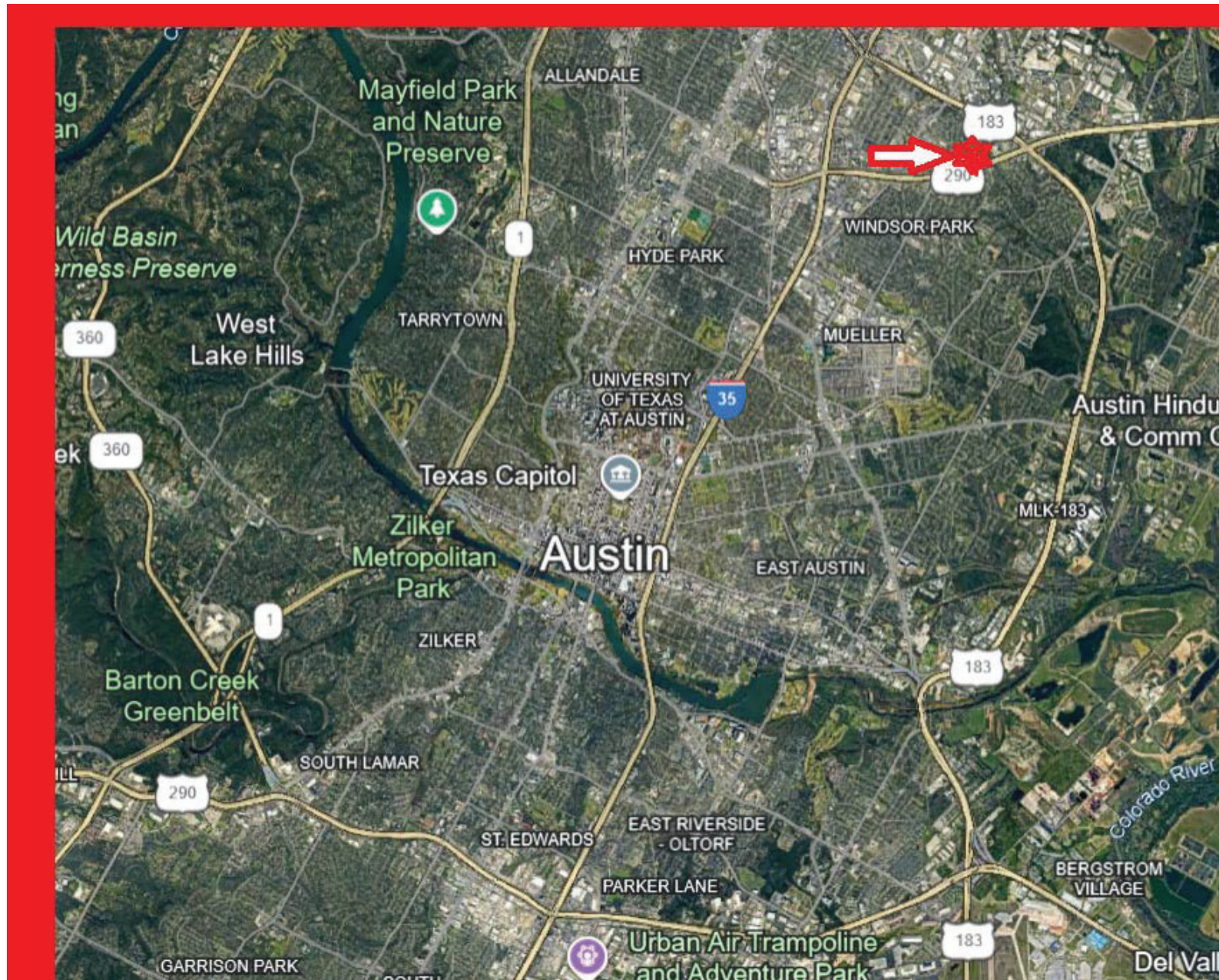


E Highway 290 Frontage

7300 E US 290 near Hwy 183 8.5 acres North Central Austin

7300 E US Hwy 290, Austin, TX 78723

Location



7300 E US 290 near Hwy 183 8.5 acres North Central Austin

7300 E US Hwy 290, Austin, TX 787273

Property Photos

