



**COLDWELL
BANKER
COMMERCIAL**

COLDWELL BANKER
COMMERCIAL REALTY

QUINCE TREE EXECUTIVE CENTER 2 (SUITE 200 & 210)

\$1,119,805 (Suite 200 - \$981,055, Suite 210 - \$138,750)
\$21 SF - Full Service (Suite 200)

818 W Diamond Ave
Gaithersburg, MD 20878

AVAILABLE SPACE
6,053 SF



OFFICE

Leon B Robinson IV
Commercial Real Estate Advisor
202 926 6961
leon.robinsoniv@cbcrealty.com

Ricardo Guice
Commercial Sales Associate
202 805 5614
ricardo.guice@cbcnrt.com

©2023 Coldwell Banker. All Rights Reserved. Coldwell Banker Commercial® and the Coldwell Banker Commercial logos are trademarks of Coldwell Banker Real Estate LLC. The Coldwell Banker® System is comprised of company owned offices which are owned by a subsidiary of Anywhere Advisors LLC and franchised offices which are independently owned and operated. The Coldwell Banker System fully supports the principles of the Equal Opportunity Act.

COLDWELL BANKER COMMERCIAL
COLDWELL BANKER COMMERCIAL REALTY
12435 Park Potomac Ave Ste 550, Potomac, MD 20854
301.983.0200

CBCWORLDWIDE.COM

FOR SALE



QUINCE TREE EXECUTIVE CENTER 2

818 W Diamond Ave, Gaithersburg, MD 20878

SALE



OFFERING SUMMARY

Sale Price:	\$981,805
Sale Available SF:	6,053 SF
Lease Price:	\$21 SF - Full Service
Lease Available SF:	
Lot Size:	0.09 Acres
Year Built:	1987
Building Size:	36,083 SF (6,053 SF - Suite 200 & 210)
Zoning:	C2 (City of Gaithersburg)
Market:	Washington, DC
Submarket:	I-270 Corridor
Traffic Count:	40,389
Price / SF:	\$185.00

PROPERTY OVERVIEW

Coldwell Banker Commercial is pleased to present 818 W Diamond Ave, Suite 200 & 210 for sale. The asset is priced at \$185 SF at 6,053 SF. The asset can be purchased in it's entirety or individually (Suite 200 - 5,303 SF, Suite 210 - 750 SF).

Property highlights include: 80 KW Back Up Generator, CAT 5 Telecoms, CAT 6 Network, Large Bull Pin, Conference Rooms, Multiple Private Offices, Break Room & Server Room.

For more information please contact Faraz Cheema

DEMOGRAPHICS

	1 MILE	3 MILES	5 MILES
Total Households	6,095	54,072	111,684
Total Population	14,016	141,273	304,974
Average HH Income	\$70,616	\$92,796	\$105,638

CBCWORLDWIDE.COM

Leon B Robinson IV
Commercial Real Estate Advisor
202 926 6961
leon.robinsoniv@cbcrealty.com

Ricardo Guice
Commercial Sales Associate
202 805 5614
ricardo.guice@cbcnrt.com





SALE

QUINCE TREE EXECUTIVE CENTER 2

818 W Diamond Ave, Gaithersburg, MD 20878



LOCATION DESCRIPTION

Walk Score: Somewhat Walkable (57)

Transit Score: Some Transit (49)

Parking 140 free Surface Spaces are available
Ratio of 3.50/1,000 SF

Commuter Rail:

Metropolitan Grove Commuter Rail: 5 min (Drive Time) 1.2 mi

Gaithersburg Commuter Rail: 5 min (Drive Time) 1.7 mi

Traffic Count:

I-270 & W Diamond Ave SE: 173,901 VPD

I-270 & State Hwy 124 NW: 162,952 VPD

Clopper Rd & Bureau Dr NW: 40,389 VPD

Clopper Rd & I-270 E: 13,354 VPD

CBCWORLDWIDE.COM

Leon B Robinson IV
Commercial Real Estate Advisor
202 926 6961
leon.robinsoniv@cbrealty.com

Ricardo Guice
Commercial Sales Associate
202 805 5614
ricardo.guice@cbcnrt.com



**COLDWELL BANKER
COMMERCIAL REALTY**



QUINCE TREE EXECUTIVE CENTER 2

818 W Diamond Ave, Gaithersburg, MD 20878

SALE



CBCWORLDWIDE.COM

Leon B Robinson IV
Commercial Real Estate Advisor
202 926 6961
leon.robinsoniv@cbrealty.com

Ricardo Guice
Commercial Sales Associate
202 805 5614
ricardo.guice@cbcnrt.com



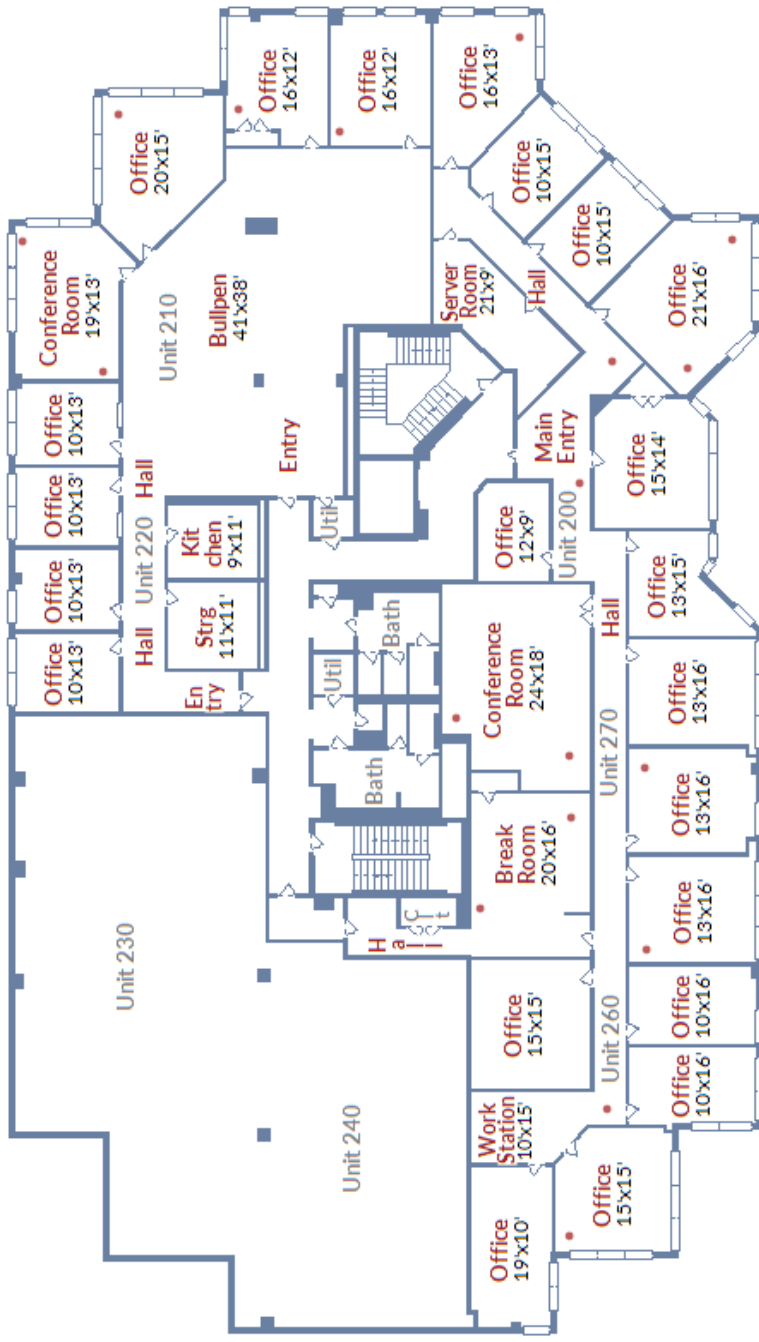
COLDWELL BANKER
COMMERCIAL REALTY



QUINCE TREE EXECUTIVE CENTER 2

818 W Diamond Ave, Gaithersburg, MD 20878

SALE



Copyright © TruPlace, Inc.

CBCWORLDWIDE.COM

Leon B Robinson IV
 Commercial Real Estate Advisor
 202 926 6961
 leon.robinsoniv@cbcrealty.com

Ricardo Guice
 Commercial Sales Associate
 202 805 5614
 ricardo.guice@cbcrrt.com

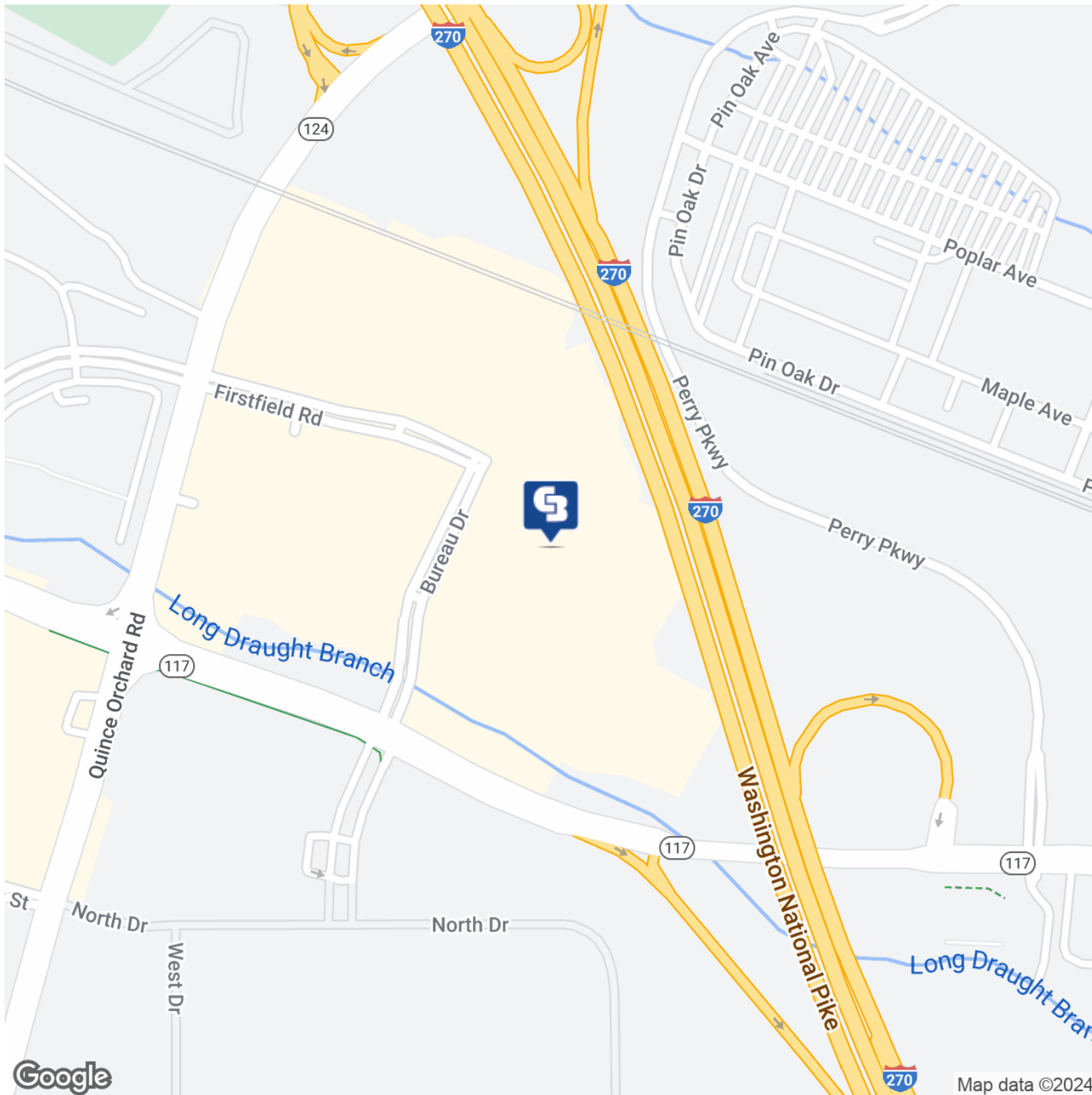




QUINCE TREE EXECUTIVE CENTER 2

818 W Diamond Ave, Gaithersburg, MD 20878

SALE



CBCWORLDWIDE.COM

Leon B Robinson IV
Commercial Real Estate Advisor
202 926 6961
leon.robinsoniv@cbrealty.com

Ricardo Guice
Commercial Sales Associate
202 805 5614
ricardo.guice@cbcrrt.com

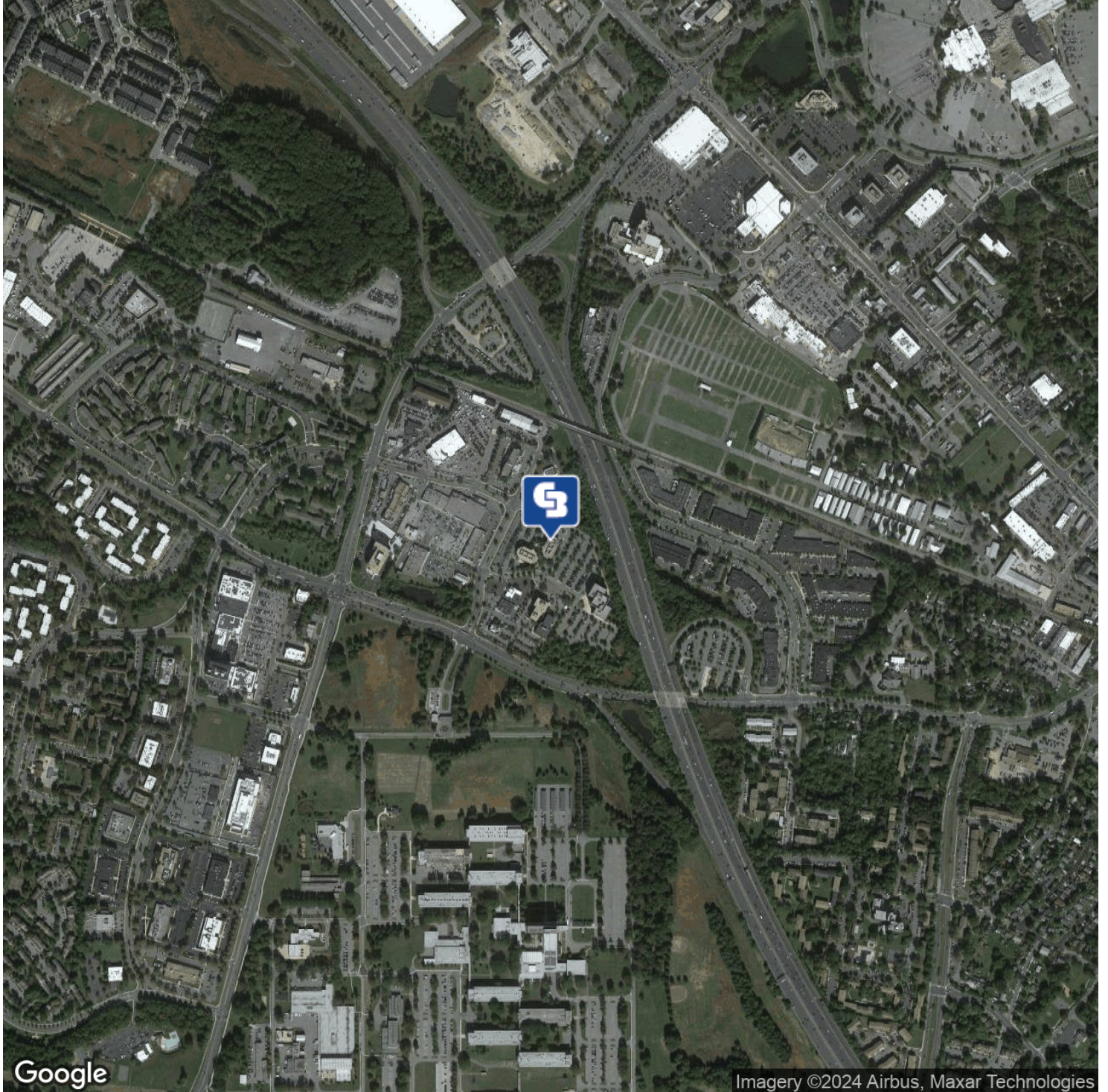
 **COLDWELL
BANKER
COMMERCIAL**
COLDWELL BANKER
COMMERCIAL REALTY



QUINCE TREE EXECUTIVE CENTER 2

818 W Diamond Ave, Gaithersburg, MD 20878

SALE



CBCWORLDWIDE.COM

Leon B Robinson IV
Commercial Real Estate Advisor
202 926 6961
leon.robinsoniv@cbrealty.com

Ricardo Guice
Commercial Sales Associate
202 805 5614
ricardo.guice@cbcnrt.com



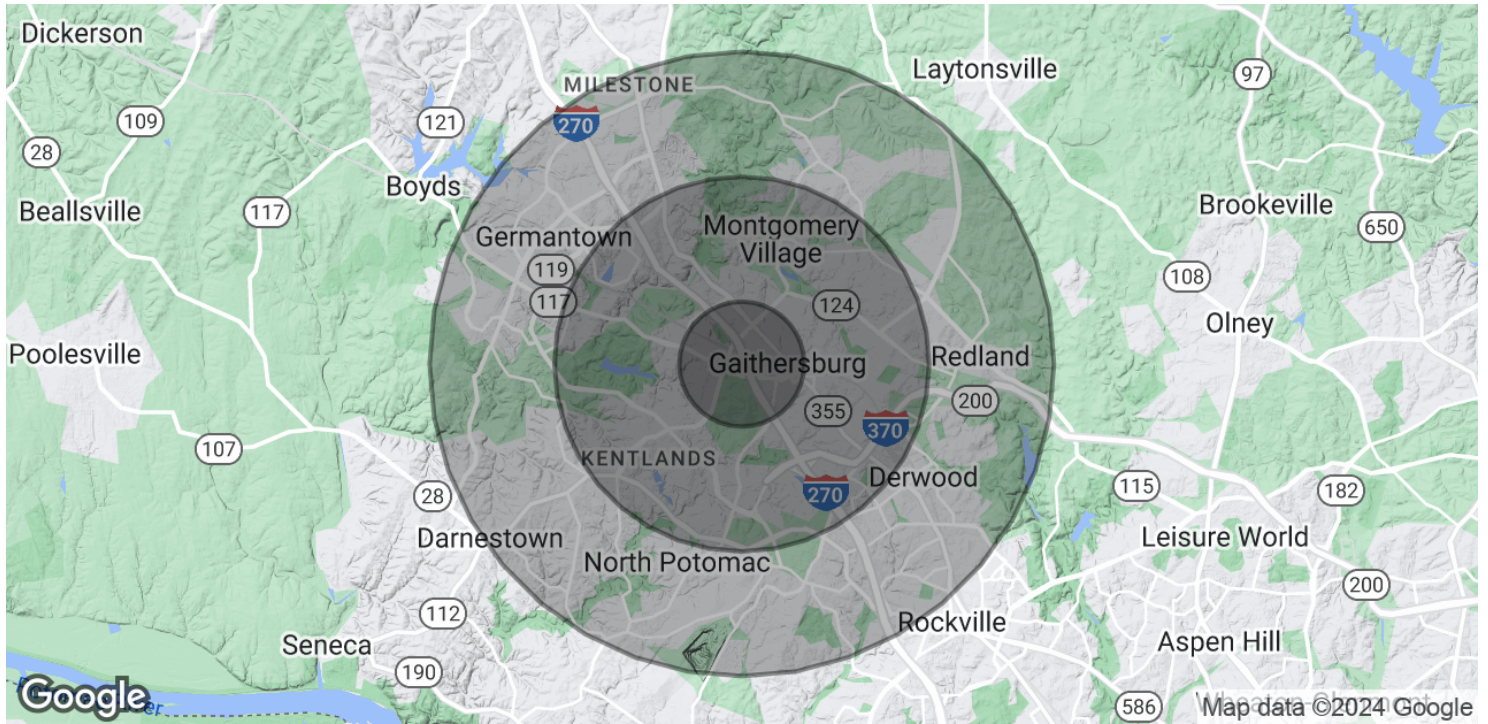
**COLDWELL BANKER
COMMERCIAL REALTY**



QUINCE TREE EXECUTIVE CENTER 2

818 W Diamond Ave, Gaithersburg, MD 20878

SALE



POPULATION	1 MILE	3 MILES	5 MILES
Total Population	14,016	141,273	304,974
Average age	39.0	35.9	36.1
Average age (Male)	35.3	34.2	34.9
Average age (Female)	39.8	36.8	36.9
HOUSEHOLDS & INCOME	1 MILE	3 MILES	5 MILES
Total households	6,095	54,072	111,684
# of persons per HH	2.3	2.6	2.7
Average HH income	\$70,616	\$92,796	\$105,638
Average house value	\$389,106	\$367,942	\$431,237

* Demographic data derived from 2020 ACS - US Census

CBCWORLDWIDE.COM

Leon B Robinson IV
 Commercial Real Estate Advisor
 202 926 6961
 leon.robinsoniv@cbrealty.com

Ricardo Guice
 Commercial Sales Associate
 202 805 5614
 ricardo.guice@cbcnrt.com

