

1075 E South Boulder Road
Suites 210, 215, 220, 235 & 300
Louisville, CO

992—13,760
Square Feet

Office/Retail Space Available!

Flexible Office Suites Available:

ranging from small private offices to larger configurations

Full Floor Office:

third-floor professional office space with an efficient, open floor plan

Prime Christopher Plaza Location

Located in Christopher Plaza, a well-maintained office building

Elevator Access:

To both floors with direct entry into Suite 300

Nice Finishes:

Beautifully finished reception areas, offices, conference rooms and waiting area for a polished first impression

High Ceilings & Windows:

High ceilings and expansive windows provide abundant natural light throughout

Amenities:

In-suite restrooms, kitchenettes, and showers with flexible layout options

Ample Parking:

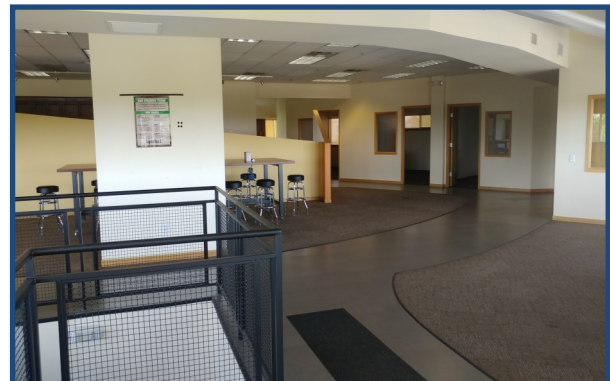
Ample surface parking for employees and visitors

Easy Access for All:

Centrally located between Boulder and Denver with convenient regional access

Downtown Louisville:

Just blocks from Downtown Louisville, offering walkable restaurants, coffee shops, and services



TEBO
PROPERTIES

Contact us for more information:

leasing@teboproperties.com

303-447-8326

www.TEBOproperties.com

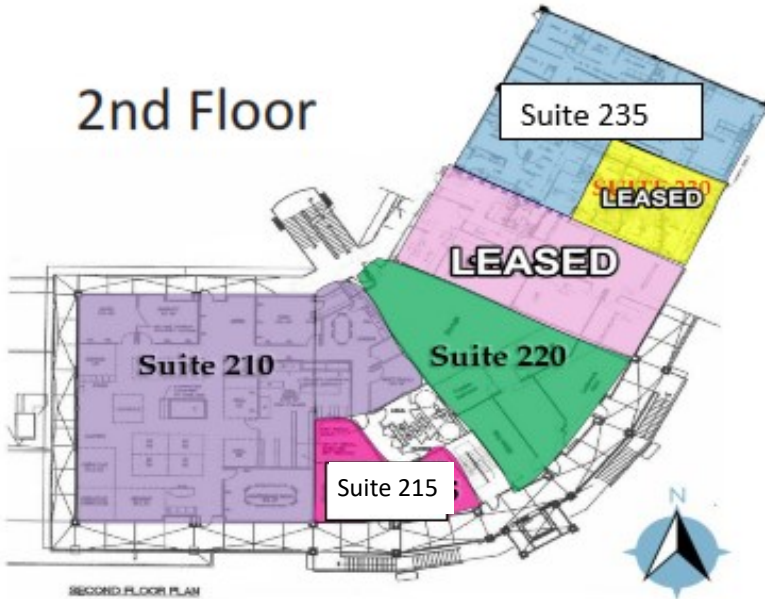
OFFICE SPACE FOR LEASE



TEBO
PROPERTIES

1075 E South Boulder Road, Louisville, CO

2nd Floor



Unit	Square Footage	Price
210	4,395	\$14.00/SF + \$9.21(NNN) = \$8,500.66/ MO
215	992	\$15.00/SF + \$9.21 (NNN) = \$2,001.36/MO
220	1,965	\$14.00/SF + \$9.21(NNN) = \$3,800.64/MO
235	2,463	Call for Rate
300	4,937	\$14.00SF + \$9.21 (NNN) =\$9,548.98/MO

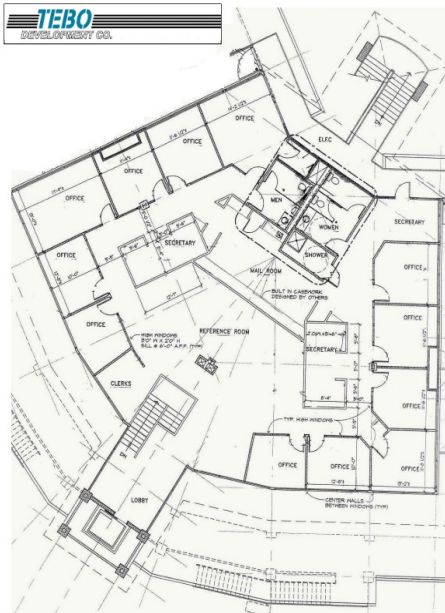


Exhibit A
Christopher Plaza
1075 South Boulder Road
Louisville, Colorado



Penthouse
Suite 300



TEBO
PROPERTIES

Contact us for more information:
leasing@teboproperties.com
303-447-8326
www.TEBOproperties.com