

LEASE

THOMPSON OFFICE PARK 4820 Southpoint Dr. Fredericksburg, VA 22407



PROPERTY DESCRIPTION

One of Virginia's fastest growing locations, this 15,000+ sf office building is fully leased and located amongst a huge growth of not only new residential but commercial developments as well including the new VA Clinic, which will sit on 60 acres and be a four-story, 450,000-square-foot facility, just minutes from Thompson Office Park.

PROPERTY HIGHLIGHTS

- One vacancy - Suite 201 - currently a real estate office
- 1,750 sf with very attractive finishes and nice window line.
- Space features open reception area, 4 private offices, breakroom and open bullpen which can provide more offices as needed.

OFFERING SUMMARY

Lease Rate:	\$15.00 SF/yr (NNN)
Available SF:	1,750 SF
Lot Size:	1.43 Acres
Zoning:	C3
APN:	35-7-1 35-7-1A

DEMOGRAPHICS	1 MILE	5 MILES	10 MILES
Total Households	2,289	33,533	68,789
Total Population	5,098	91,197	187,203
Average HH Income	\$82,975	\$98,767	\$101,764

Brian Cunningham, CCIM
540 429 3414

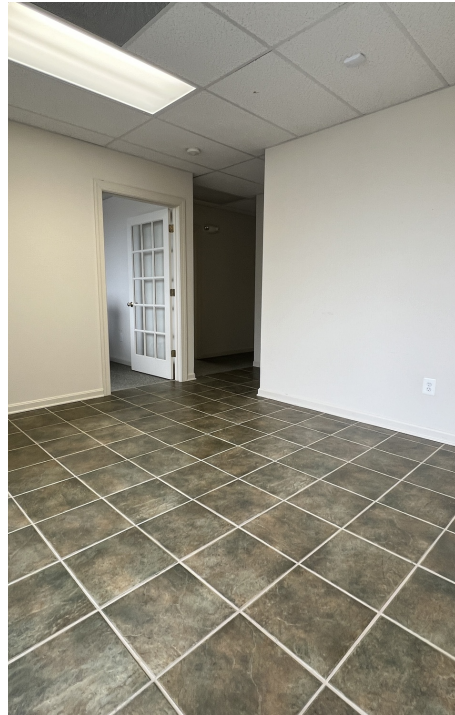
Carl Braun
540 842 7551



**COLDWELL BANKER
COMMERCIAL**
ELITE

LEASE

THOMPSON OFFICE PARK
4820 Southpoint Dr. Fredericksburg, VA 22407



Brian Cunningham, CCIM
540 429 3414

Carl Braun
540 842 7551



COLDWELL BANKER
COMMERCIAL
ELITE

LEASE

THOMPSON OFFICE PARK

4820 Southpoint Dr. Fredericksburg, VA 22407



Brian Cunningham, CCIM
540 429 3414

Carl Braun
540 842 7551

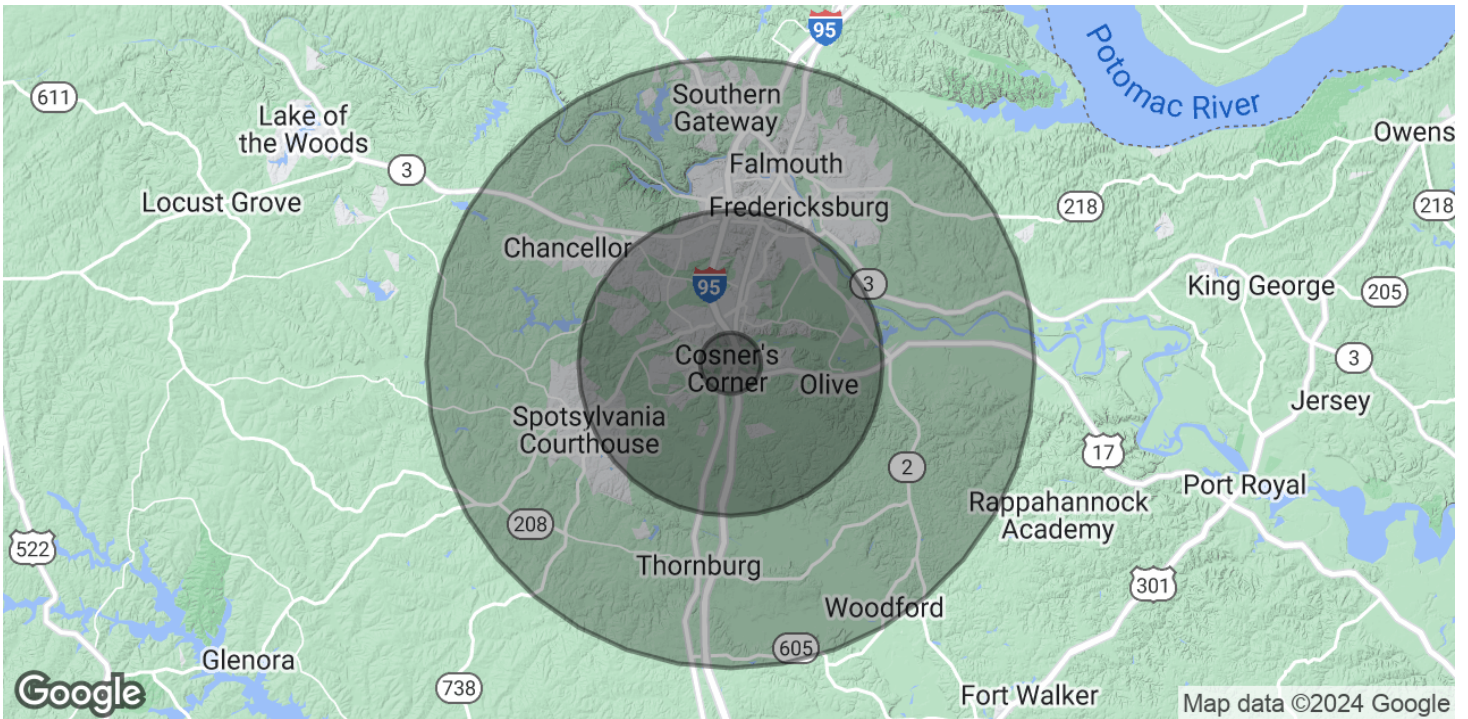


**COLDWELL BANKER
COMMERCIAL**
ELITE

LEASE

THOMPSON OFFICE PARK

4820 Southpoint Dr. Fredericksburg, VA 22407



POPULATION	1 MILE	5 MILES	10 MILES
Total Population	5,098	91,197	187,203
Average Age	42.6	37.2	37.2
Average Age (Male)	39.8	36.2	36.2
Average Age (Female)	43.6	38.3	38.4

HOUSEHOLDS & INCOME	1 MILE	5 MILES	10 MILES
Total Households	2,289	33,533	68,789
# of Persons per HH	2.2	2.7	2.7
Average HH Income	\$82,975	\$98,767	\$101,764
Average House Value	\$243,471	\$280,358	\$300,966

* Demographic data derived from 2020 ACS - US Census

Brian Cunningham, CCIM
540 429 3414

Carl Braun
540 842 7551



**COLDWELL BANKER
COMMERCIAL**
ELITE