



6395 Psalmont Road

Midland, Georgia 31820

Property Highlights

- +/- 3 acre undeveloped lot
- PUD zoning
- Investment opportunity

Property Overview

This +/- 3 acre undeveloped lot at 6395 Psalmont Road offers a PUD zoning, providing flexibility for various development opportunities. Situated in the vibrant Midland area, the parcel benefits from excellent visibility at the only signalized intersection in the area, making it an ideal investment. The lot features a level terrain, approved curb cut from Highway 80, and an additional entrance from Psalmont Road. Offsite detention is also in place, and the owner is open to dividing the property. With its strategic location and versatile zoning, this property is a prime opportunity for land investors.

Offering Summary

| | |
|--------------------|------------------|
| Sale Price: | \$871,200 / acre |
| Lot Size: | +/- 3 Acres |

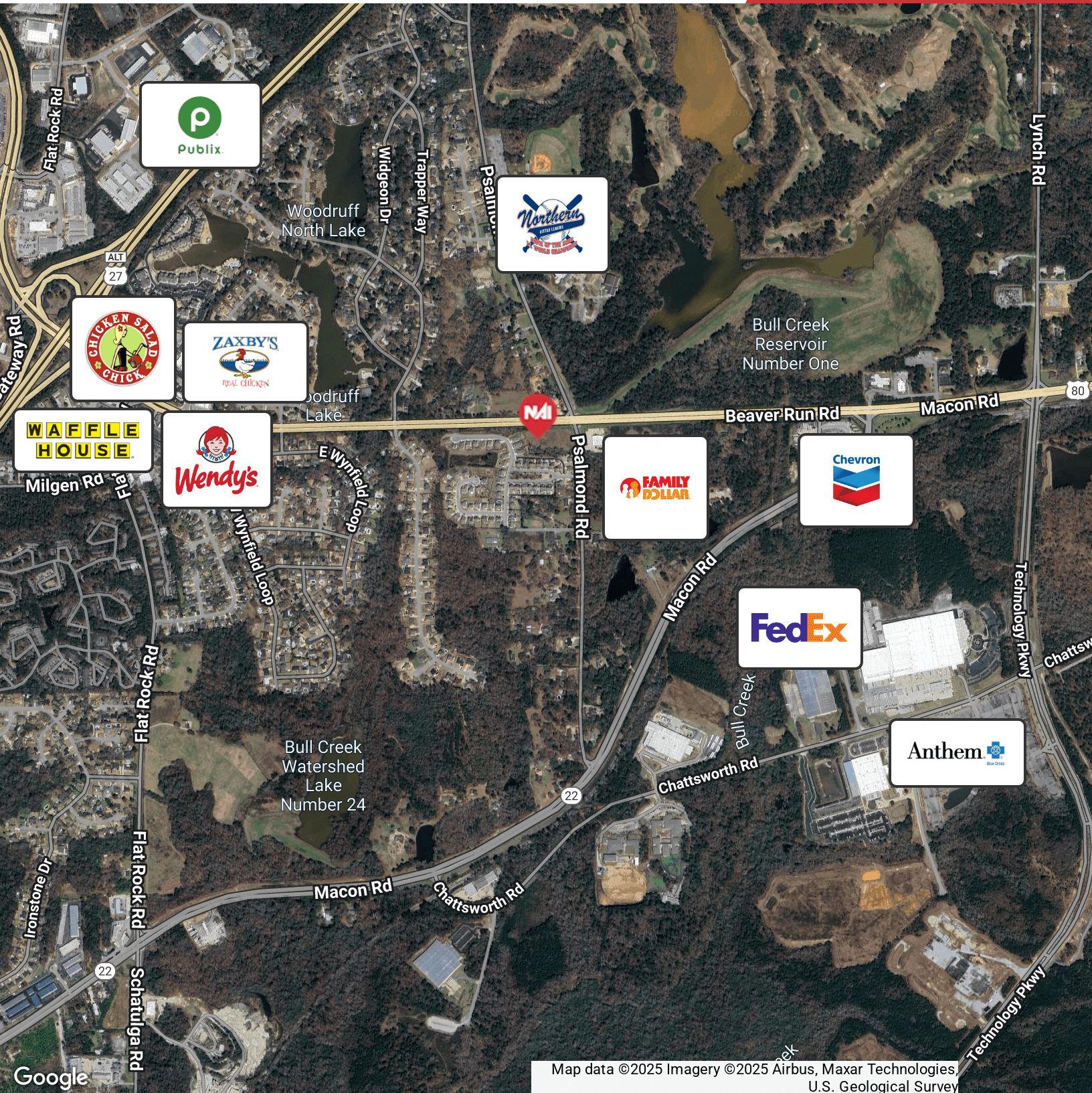
Demographics 0.3 Miles 0.5 Miles 1 Mile

| | | | |
|--------------------------|-----------|-----------|-----------|
| Total Households | 85 | 284 | 1,712 |
| Total Population | 204 | 677 | 3,753 |
| Average HH Income | \$112,163 | \$112,195 | \$101,682 |

For More Information

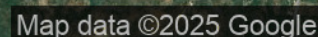
Lakshmi Karthik

O: 706 660 5418
lkarthik@g2cre.com

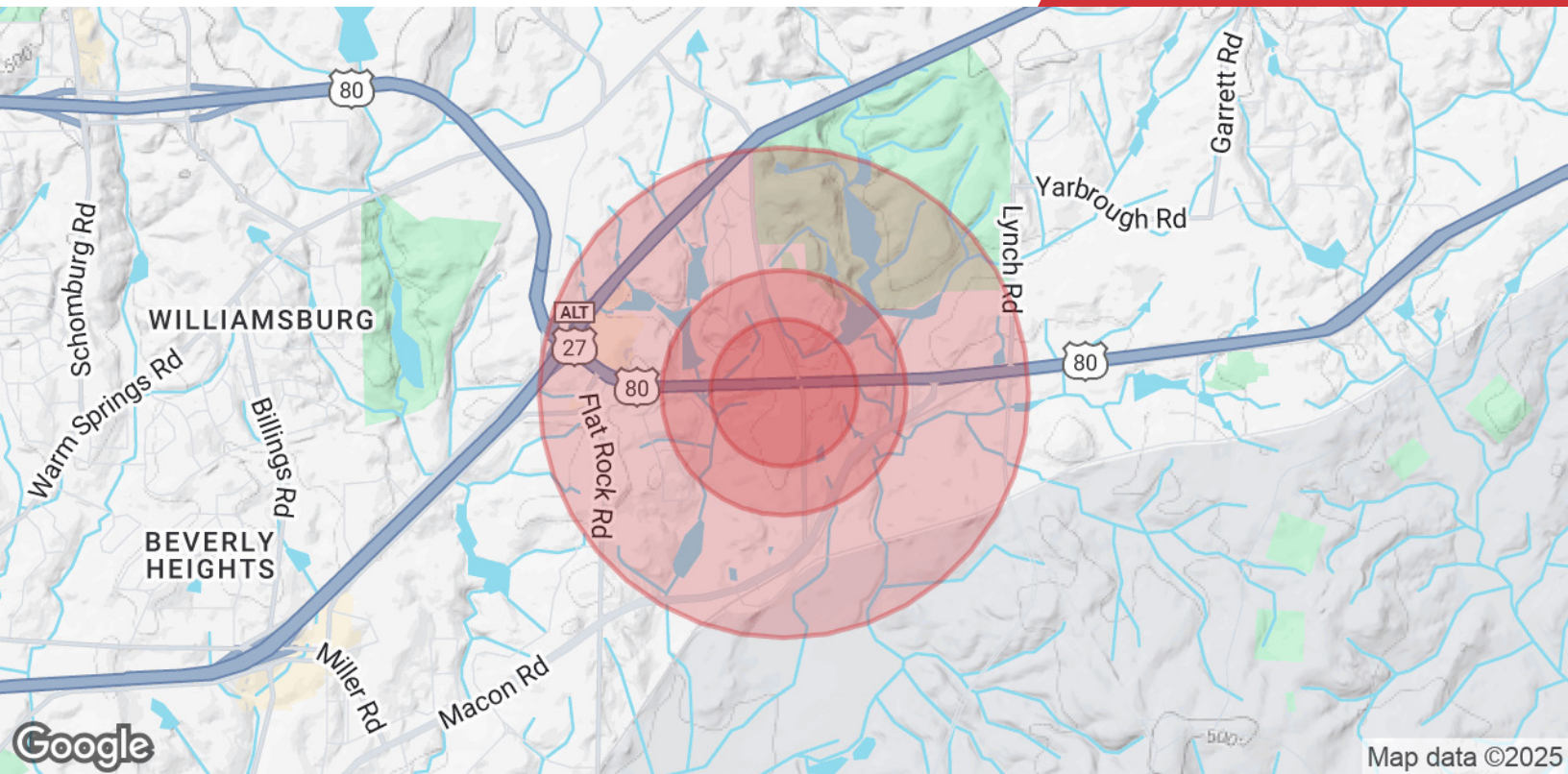


We obtained the information above from sources we believe to be reliable. However, we have not verified its accuracy and make no guarantee, warranty or representation about it. It is submitted subject to the possibility of errors, omissions, change of price, rental or other conditions, prior sale, lease or financing, or withdrawal without notice. We include projections, opinions, assumptions or estimates for example only, and they may not represent current or future performance of the property. You and your tax and legal advisors should conduct your own investigation of the property and transaction.

Post Office Box 4529
Columbus, GA 31904
706 660 5418 tel
G2cre.com



Post Office Box 4529
Columbus, GA 31904
706 660 5418 tel
G2cre.com



Population

| | 0.3 Miles | 0.5 Miles | 1 Mile |
|-----------------------------|-----------|-----------|--------|
| Total Population | 204 | 677 | 3,753 |
| Average Age | 42 | 42 | 39 |
| Average Age (Male) | 41 | 41 | 37 |
| Average Age (Female) | 44 | 44 | 40 |

Households & Income

| | 0.3 Miles | 0.5 Miles | 1 Mile |
|----------------------------|-----------|-----------|-----------|
| Total Households | 85 | 284 | 1,712 |
| # of Persons per HH | 2.4 | 2.4 | 2.2 |
| Average HH Income | \$112,163 | \$112,195 | \$101,682 |
| Average House Value | \$297,636 | \$297,199 | \$293,368 |

Demographics data derived from AlphaMap

Agent Owner Disclosure Notice

Broker's designated agent is a licensed real estate professional in the State of Georgia, and holds an ownership interest in the property being advertised.