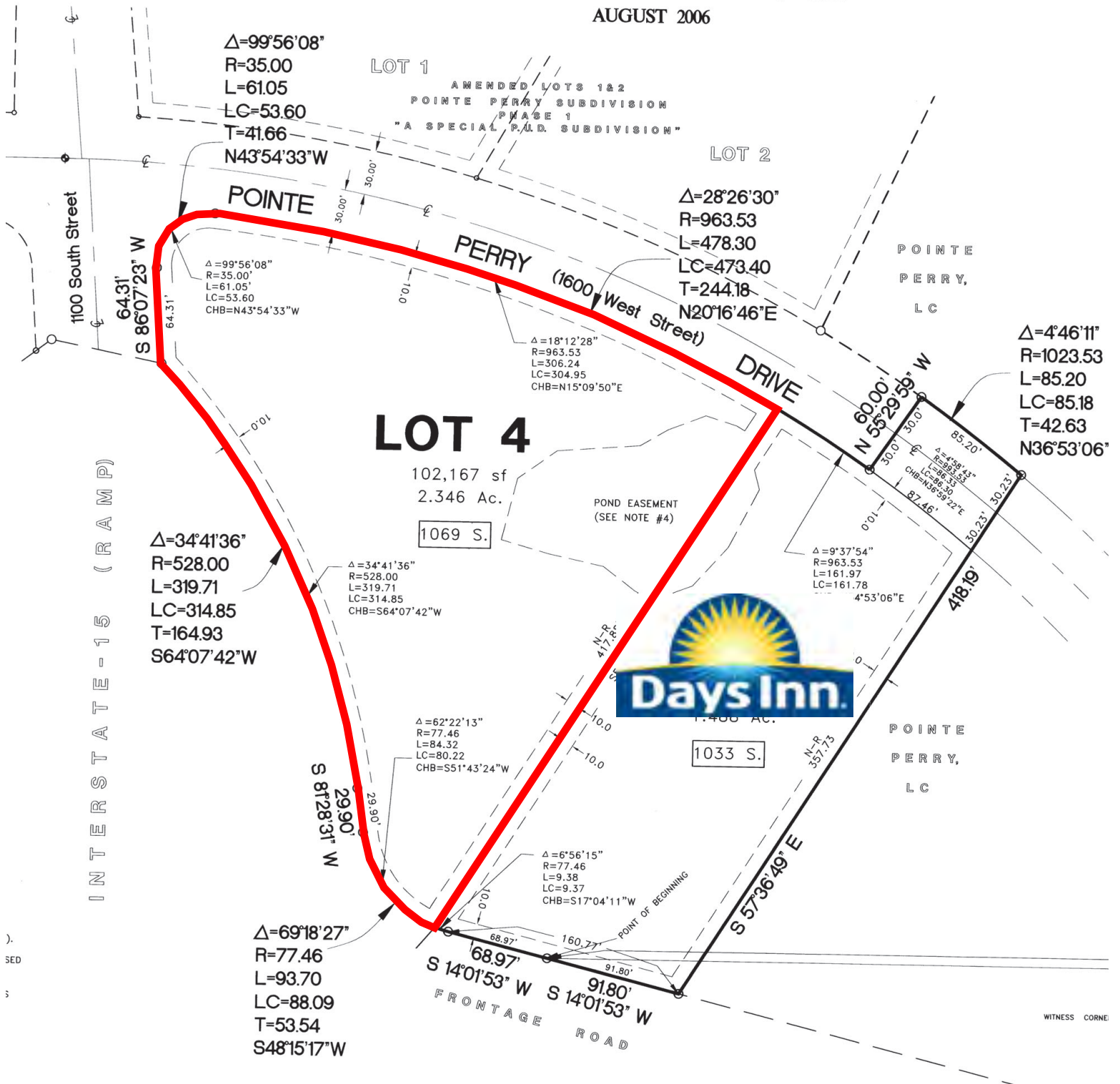




AMENDED LOTS 3 & 4 OF A PORTION OF POINTE PERRY SUBDIVISION PHASE 1

"A SPECIAL P.U.D. SUBDIVISION"
A PART OF SECTION 27, TOWNSHIP 9 NORTH, RANGE 2 WEST,
SALT LAKE BASE AND MERIDIAN, U.S. SURVEY
PERRY CITY, BOX ELDER COUNTY, UTAH
AUGUST 2006



LOT 4

102,167 sf
2.346 Ac.

1069 S.



1033 S.

WITNESS CORNER