



FOR LEASE

MESA EXECUTIVE PARK

1255 W BASELINE RD | MESA, AZ 85202



AVAILABILITY:

- A214: ±1,659 SF**
- A200: ±4,659 SF
- B139: ±1,387 SF
- C175: ±2,279 SF
- C255: ±2,062 SF*
- C256: ±2,588 SF
- C259: ±2,232 SF*
- D278A: ±1,500 SF***
- D288B: ±5,708 SF

*Spec Suite
**Available Dec. 1st
***D278A Contiguous to ±3,075 SF



LEASE RATE:

\$18.50/SF FS



BUILDING SIZE:

±80,067 SF



ZONING:

C-2, Mesa



PARKING:

5/1000
\$35/month for covered parking

HIGHLIGHTS:

- Move-in ready suites available
- Easy access to US 60, Loop 101, and Loop 202 Freeways
- Plenty of covered parking
- Monument signage available



Jason Reddington

Partner

480.289.4504

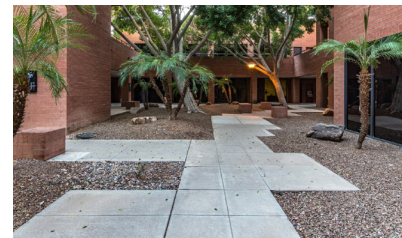
jreddington@levrose.com



VIEW VIRTUAL TOUR
SUITE C255



VIEW VIRTUAL TOUR
SUITE C259



Keri Davies

Partner

480.294.6572

kdavies@levrose.com

Hank Moore

Junior Advisor

480.289.4223

hmoore@levrose.com



FLOOR PLAN

SUITE C255

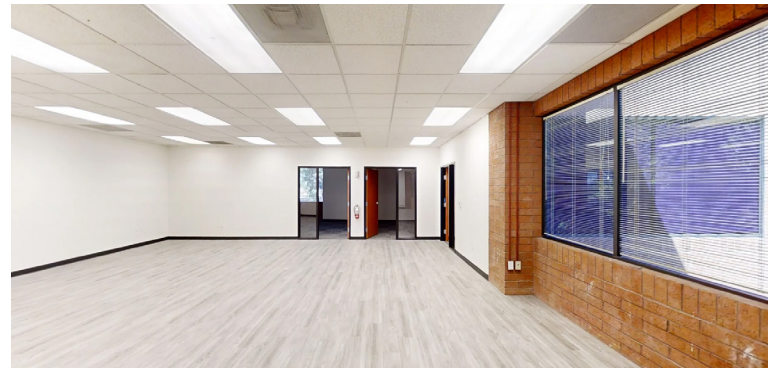
1255 W BASELINE RD | MESA, AZ 85202

LEVROSE
COMMERCIAL REAL ESTATE

TCN
COMMERCIAL
REAL ESTATE SERVICES



VIEW VIRTUAL TOUR



Jason Reddington

Partner

480.289.4504

jreddington@levrose.com

Hank Moore

Junior Advisor

480.289.4223

hmoore@levrose.com

Keri Davies

Partner

480.294.6572

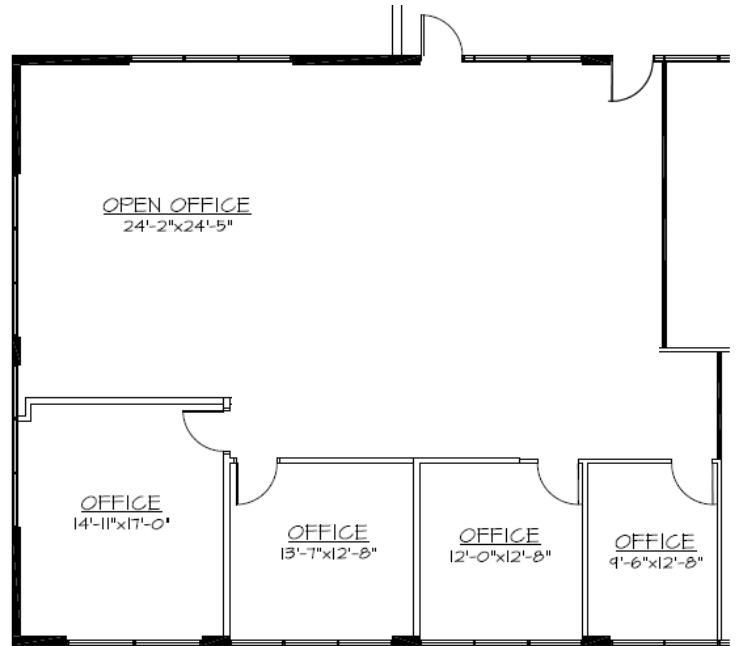
kdavies@levrose.com



SUITE C259

1255 W BASELINE RD | MESA, AZ 85202

LEVROSE
COMMERCIAL REAL ESTATE



Jason Reddington

Partner

480.289.4504

jreddington@levrose.com

Hank Moore

Junior Advisor

480.289.4223

hmoore@levrose.com

Keri Davies

Partner

480.294.6572

kdavies@levrose.com