

# AVAILABLE FOR LEASE

## ANAHEIM HILLS MEDICAL BUILDING PREMIER MEDICAL OFFICE SUITES AVAILABLE



**500 S. ANAHEIM HILLS ROAD**  
ANAHEIM, CALIFORNIA 92807

### FEATURES:

- ±43,679 SF 2-story garden style medical office building
- Located in Prestige Community of Anaheim Hills
- 6:1000 parking ratio
- Professionally managed building
- Building designed to accommodate a wide range of medical specialties
- Strategic tenant mix with built-in referral services
- 10-minute drive to Placentia-Linda Hospital

### AVAILABLE SUITES:

SUITE	SIZE	RATE	DESCRIPTION
112	425 SF	TBD	
120	583 SF	TBD	Former COVID Test Lab
206/208	TBD	TBD	Former Optum
242	1,953 SF	TBD	Former Plastic Surgeon
240	1,423 SF	TBD	Former Ophthalmologist Suite
246	1,272 SF	TBD	Former Plastic Surgeon

For More Information, Contact:

**JUSTIN SMITH, SIOR**  
Senior Vice President  
CalBRE 01504494  
949.400.4786  
jbsmith@lee-associates.com

**GRANT LA BOUNTY**  
Senior Associate  
CalBRE 02086573  
562.310.2048  
glabounty@leeirvine.com

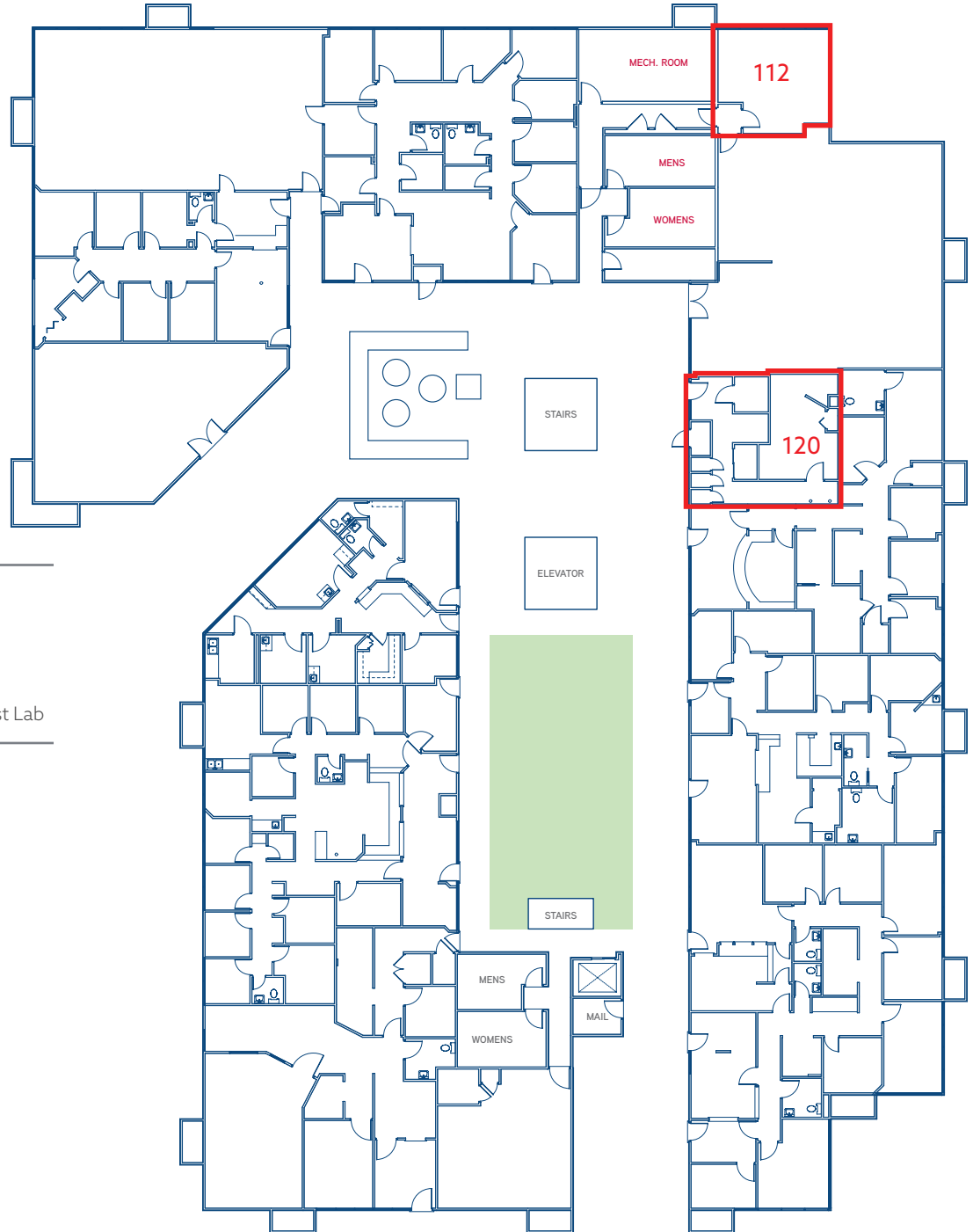
**CHRIS VASSILIAN**  
Associate  
CalBRE 02191531  
949.422.8967  
cvassilian@leeirvine.com

**JEANNETTE PLUMEDA**  
Assisstant  
jplumeda@leeirvine.com

# AVAILABLE FOR LEASE

## ANAHEIM HILLS MEDICAL BUILDING PREMIER MEDICAL OFFICE SUITES AVAILABLE

### FLOOR PLANS



#### 1<sup>ST</sup> FLOOR AVAILABILITY

SUITE	SIZE	DESCRIPTION
112	425 SF	
120	583 SF	Former COVID Test Lab

For More Information, Contact:

#### JUSTIN SMITH, SIOR

Senior Vice President  
CalBRE 01504494  
949.400.4786  
jbsmith@lee-associates.com

#### GRANT LA BOUNTY

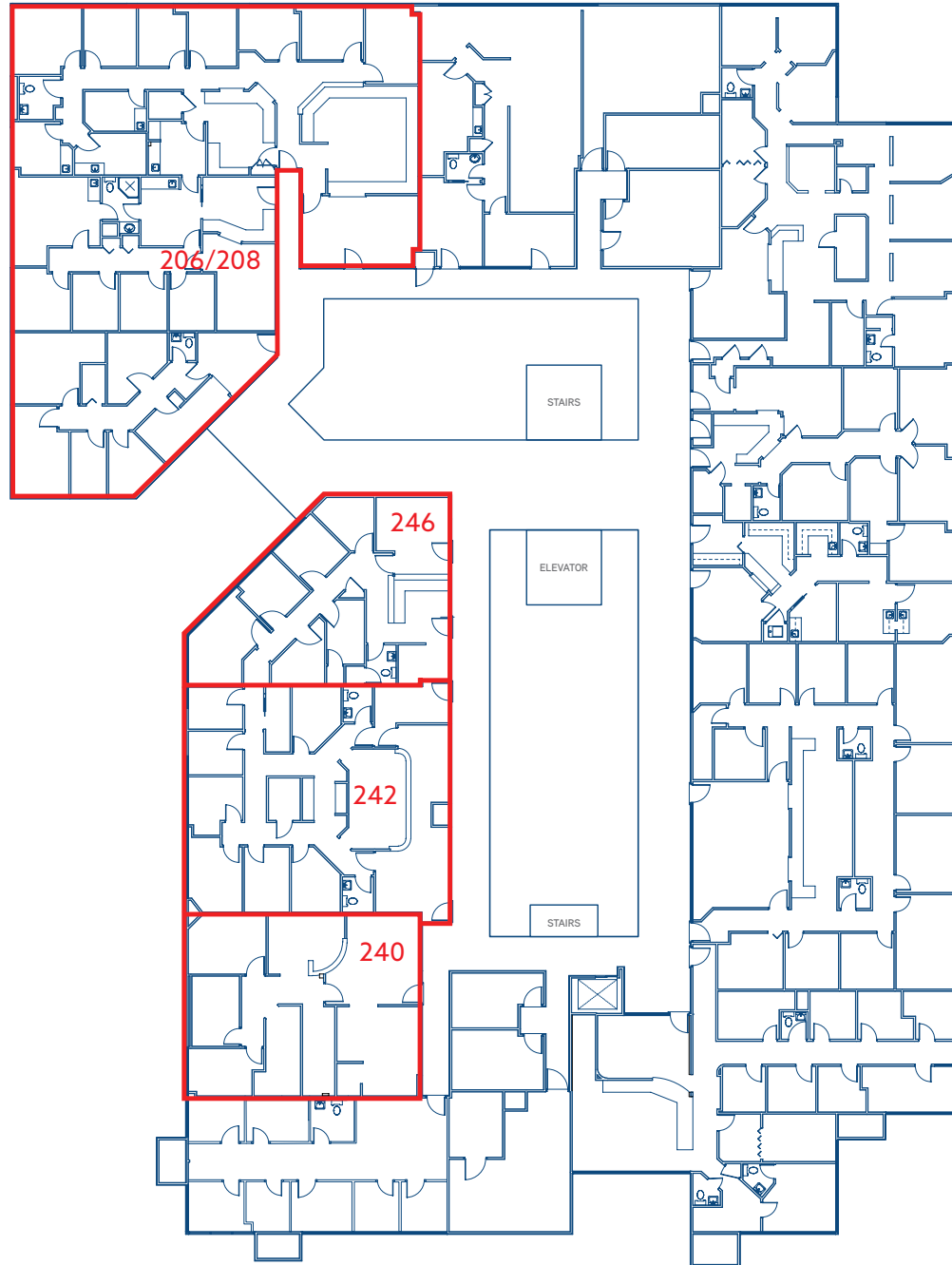
Senior Associate  
CalBRE 02086573  
562.310.2048  
glabounty@leeirvine.com

#### CHRIS VASSILIAN

Associate  
CalBRE 02191531  
949.422.8967  
cvassilian@leeirvine.com

#### JEANNETTE PLUMEDA

Assisstant  
jplumeda@leeirvine.com



#### 2<sup>ND</sup> FLOOR AVAILABILITY

SUITE	SIZE	DESCRIPTION
206/208	TBD	Former Optum
242	1,953 SF	Former Plastic Surgeon
240	1,423 SF	Former Ophthalmologist Suite
246	1,953 SF	Former Plastic Surgeon

For More Information, Contact:

#### JUSTIN SMITH, SIOR

Senior Vice President  
CalBRE 01504494  
949.400.4786  
jbsmith@lee-associates.com

#### GRANT LA BOUNTY

Senior Associate  
CalBRE 02086573  
562.310.2048  
glabounty@leeirvine.com

#### CHRIS VASSILIAN

Associate  
CalBRE 02191531  
949.422.8967  
cvassilian@leeirvine.com

#### JEANNETTE PLUMEDA

Assisstant  
jplumeda@leeirvine.com

# AVAILABLE FOR LEASE

## ANAHEIM HILLS MEDICAL BUILDING PREMIER MEDICAL OFFICE SUITES AVAILABLE

### INTERIOR PHOTOS

