

## Executive Summary



<b>AVAILABLE SF:</b>	800 - 4,618 SF
<b>LEASE RATE:</b>	Negotiable
<b>BUILDING SIZE:</b>	43,970 SF
<b>BUILDING CLASS:</b>	B
<b>YEAR BUILT:</b>	1984
<b>ZONING:</b>	I
<b>CROSS STREETS:</b>	Schoenersville Rd

### PROPERTY OVERVIEW

Highly visible & centrally located 4 story professional office building off Schoenersville Road in Bethlehem. The property offers tenants a location with great visibility, 24 hour building access and fit-out options. The building is well maintained and professionally managed. This property is perfect for business professionals looking for a great long-term office space. Uses include business services, general office, law offices, exercise club and medical offices, clinics and labs.

### PROPERTY FEATURES

- Located within minutes to Lutheran Manor Apartments, Lehigh Valley Health Network Muhlenberg and Good Shepherd Specialty Hospital
- Professionally managed
- Great parking and accessibility
- Access to public transportation
- Close to area amenities including medical offices, restaurants, schools, services and retail establishments

**CINDY MCDONNELL FEINBERG**    **CASEY KELLER**  
 cfeinberg@feinbergrea.com    ckeller@feinbergrea.com  
 Cell: 610.360.9733    Cell: 484.226.8081  
 Direct: 610.709.6233    Direct: 610.709.6232



## Additional Photos



**CINDY MCDONNELL FEINBERG**  
cfeinberg@feinbergrea.com  
Cell: 610.360.9733  
2 Direct: 610.709.6233

**CASEY KELLER**  
ckeller@feinbergrea.com  
Cell: 484.226.8081  
Direct: 610.709.6232





## Available Space



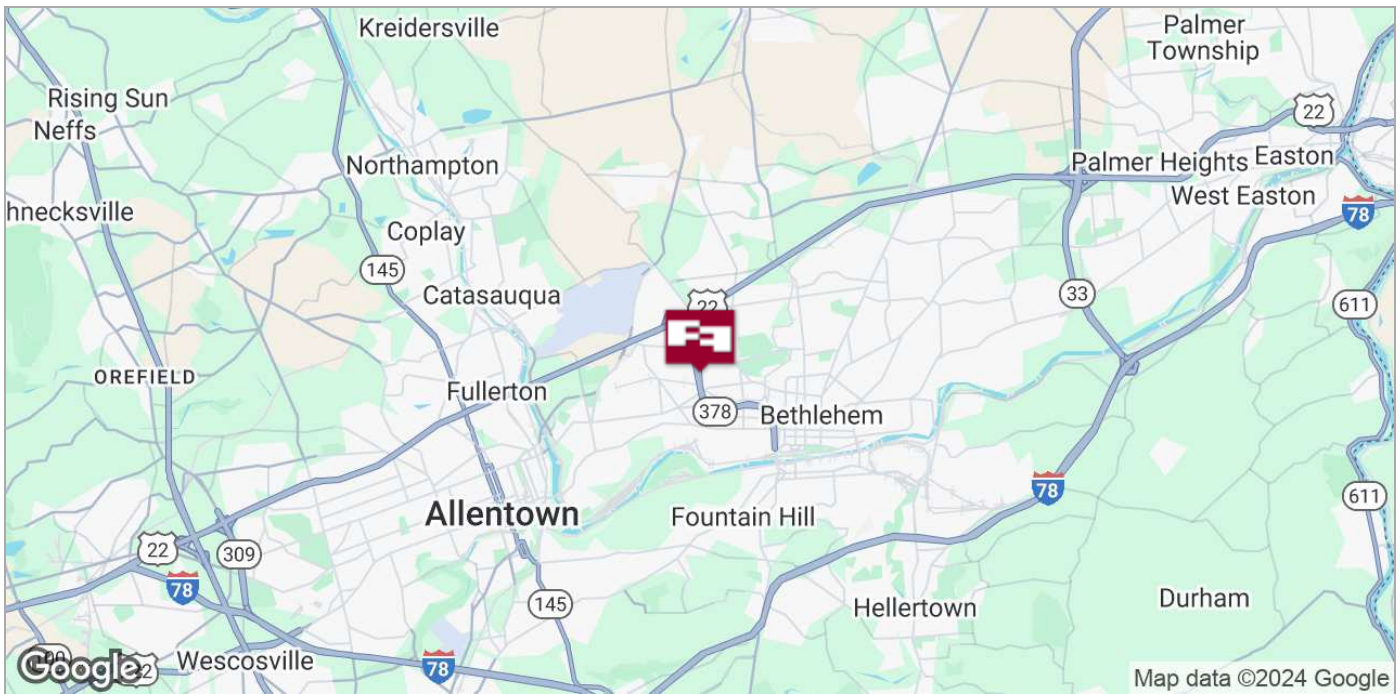
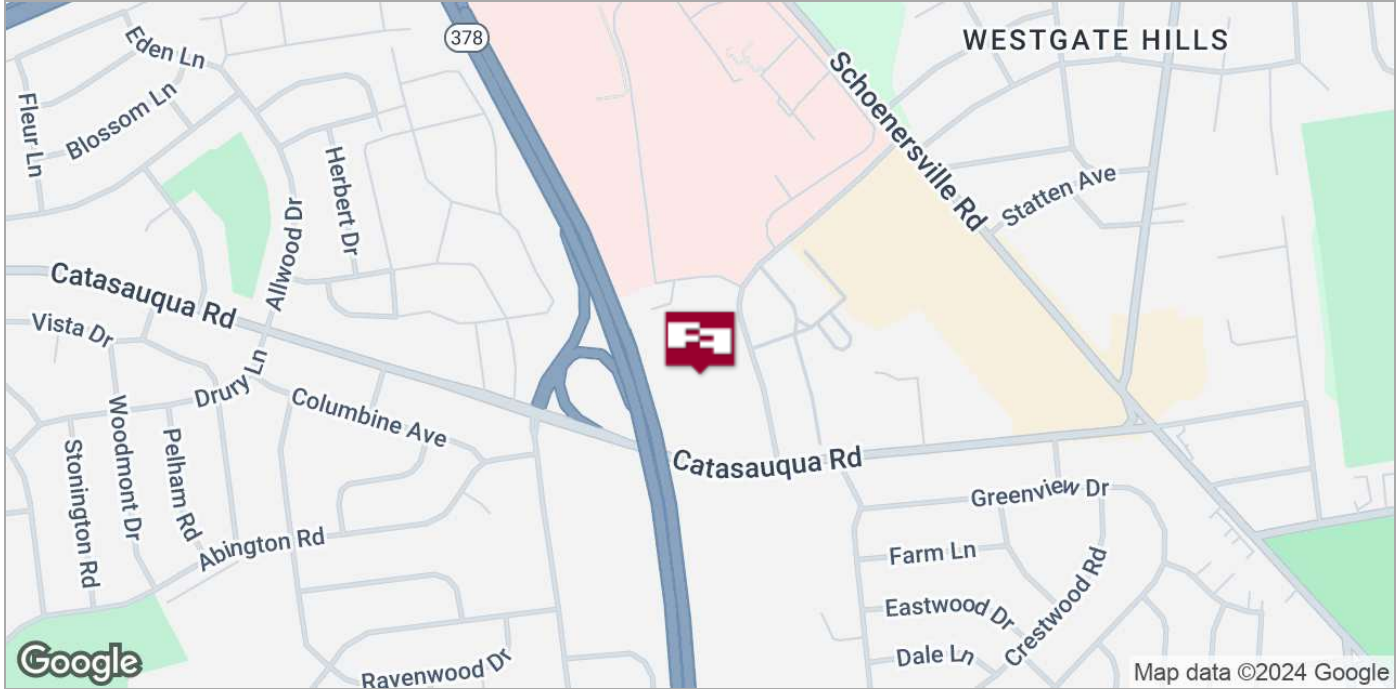
SPACE	SPACE USE	LEASE RATE	LEASE TYPE	SIZE (SF)	AVAILABILITY
Suite 202	Medical	NEGOTIABLE	NNN	800 SF	VACANT
Suite 301	Medical	NEGOTIABLE	NNN	1,015 SF	SUB-LEASE
Suite 303	Medical	NEGOTIABLE	NNN	1,780 - 4,618 SF	VACANT
Suite 304	Medical	NEGOTIABLE	NNN	1,523 - 4,618 SF	VACANT
Suite 305	Medical	NEGOTIABLE	NNN	1,315 - 4,618 SF	VACANT

**CINDY MCDONNELL FEINBERG**  
cfeinberg@feinbergrea.com  
Cell: 610.360.9733  
Direct: 610.709.6233

**CASEY KELLER**  
ckeller@feinbergrea.com  
Cell: 484.226.8081  
Direct: 610.709.6232



## Location Maps



**CINDY MCDONNELL FEINBERG**  
cfeinberg@feinbergrea.com  
Cell: 610.360.9733  
Direct: 610.709.6233

**CASEY KELLER**  
ckeller@feinbergrea.com  
Cell: 484.226.8081  
Direct: 610.709.6232





## Demographics Map



POPULATION	1 MILE	5 MILES	10 MILES
TOTAL POPULATION	9,855	233,052	478,442
MEDIAN AGE	45.5	38.0	40.4
MEDIAN AGE (MALE)	42.7	36.5	38.9
MEDIAN AGE (FEMALE)	48.8	39.8	42.1
HOUSEHOLDS & INCOME	1 MILE	5 MILES	10 MILES
TOTAL HOUSEHOLDS	4,361	93,704	192,426
# OF PERSONS PER HH	2.3	2.5	2.5
AVERAGE HH INCOME	\$83,863	\$70,424	\$83,629
AVERAGE HOUSE VALUE	\$206,024	\$173,232	\$211,306
RACE	1 MILE	5 MILES	10 MILES
% WHITE	83.8%	69.7%	76.3%
% BLACK	5.3%	9.9%	7.5%
% ASIAN	2.8%	2.7%	3.3%
% HAWAIIAN	0.0%	0.1%	0.0%
% INDIAN	0.1%	0.4%	0.3%
% OTHER	2.4%	8.6%	5.9%
ETHNICITY	1 MILE	5 MILES	10 MILES
% HISPANIC	15.7%	36.0%	24.9%

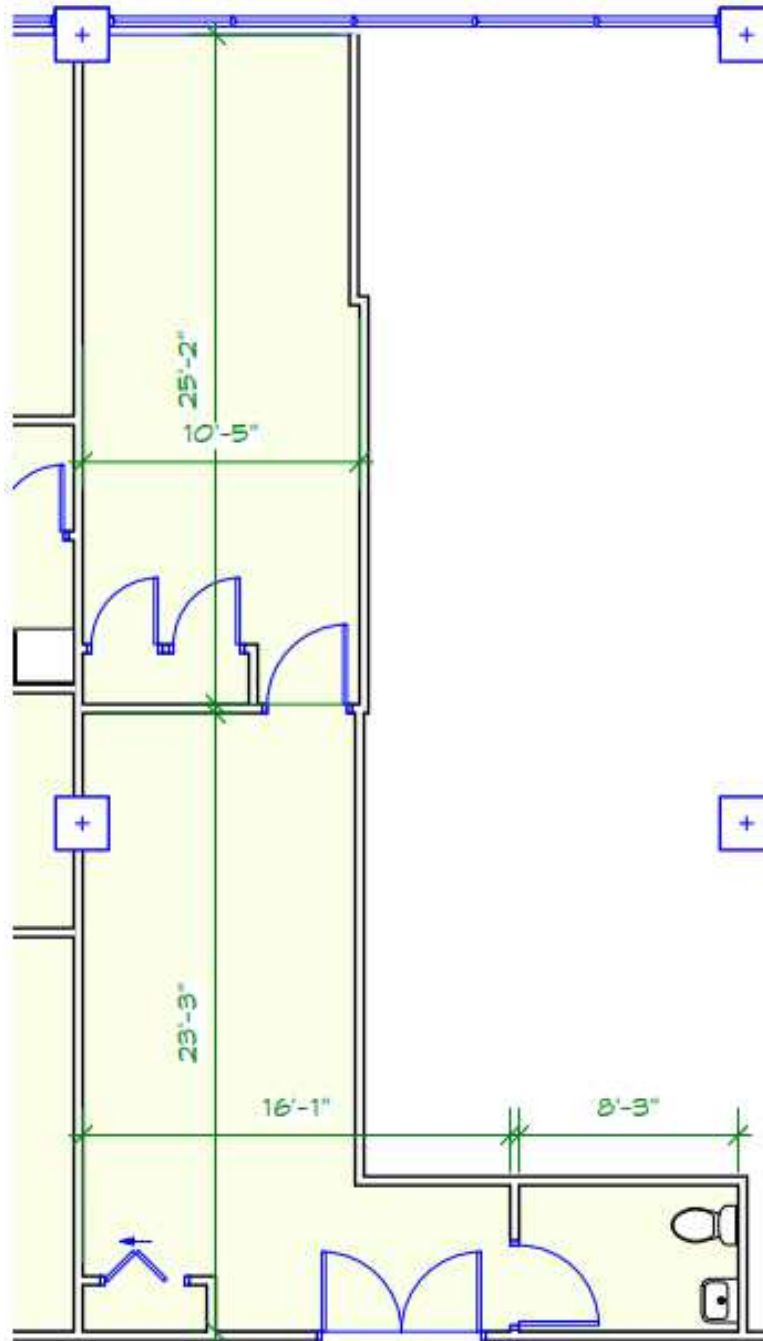
\* Demographic data derived from 2020 ACS - US Census

**CINDY MCDONNELL FEINBERG**  
cfeinberg@feinbergrea.com  
Cell: 610.360.9733  
Direct: 610.709.6233

**CASEY KELLER**  
ckeller@feinbergrea.com  
Cell: 484.226.8081  
Direct: 610.709.6232



## Floor Plans



(Not to Scale)

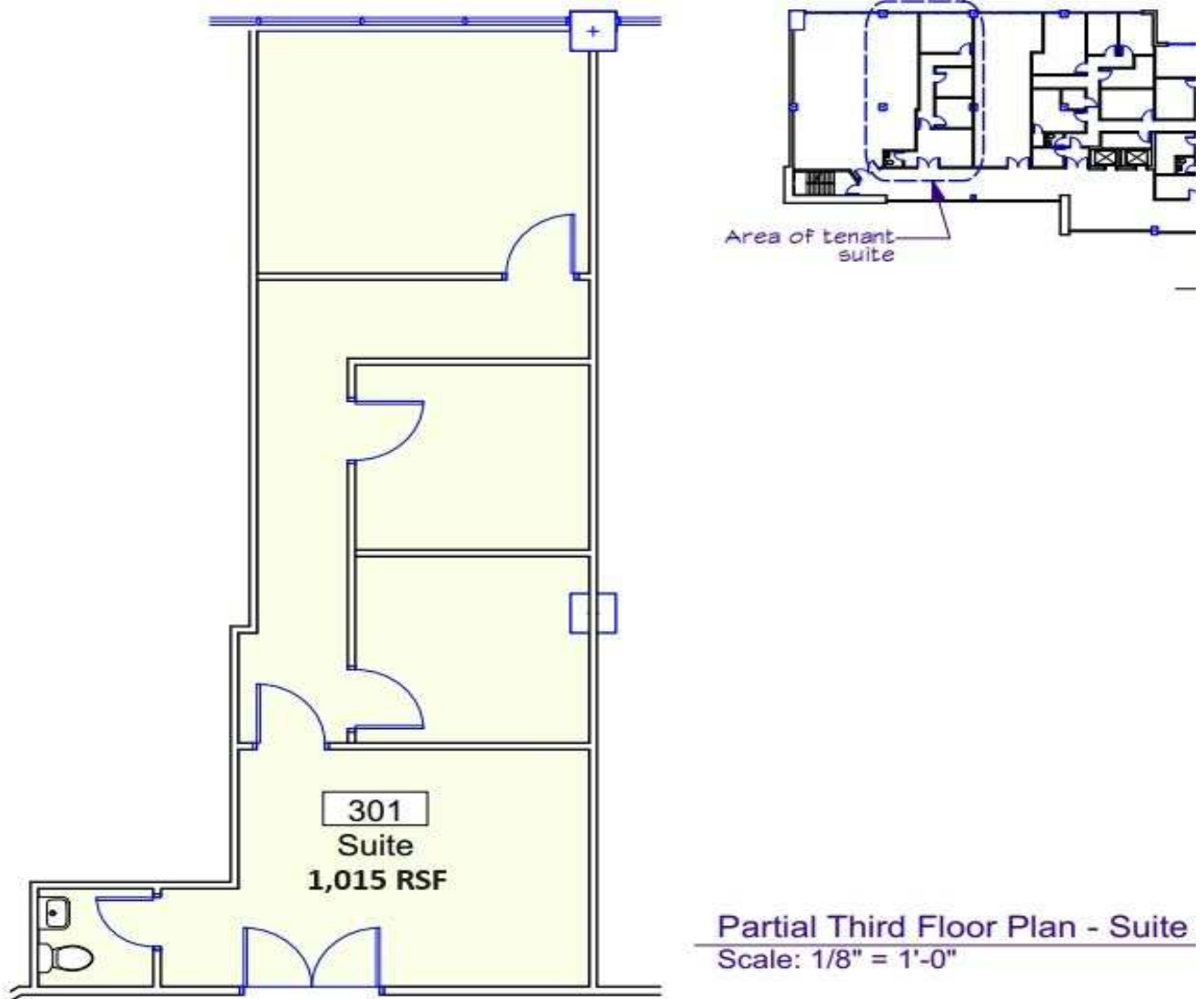
**Patial Second Floor Plan - Suite 202**  
Scale: 1/8" = 1'-0"

**CINDY MCDONNELL FEINBERG**  
cfeinberg@feinbergrea.com  
Cell: 610.360.9733  
6 Direct: 610.709.6233

**CASEY KELLER**  
ckeller@feinbergrea.com  
Cell: 484.226.8081  
Direct: 610.709.6232



## Floor Plans



**RE**  
ite 200  
18018  
09.5992

All drawings and written materials appearing herein constitute original and unpublished work of the architect and may not be used or disclosed without prior consent of 4/4 Architecture, LLC Copyrighted 2023

**Gateway Professional Center**

2045 Westgate Drive  
Bethlehem, PA 18017

Suite 301

2045 Westgate.vwx

Date: 11/10/2023

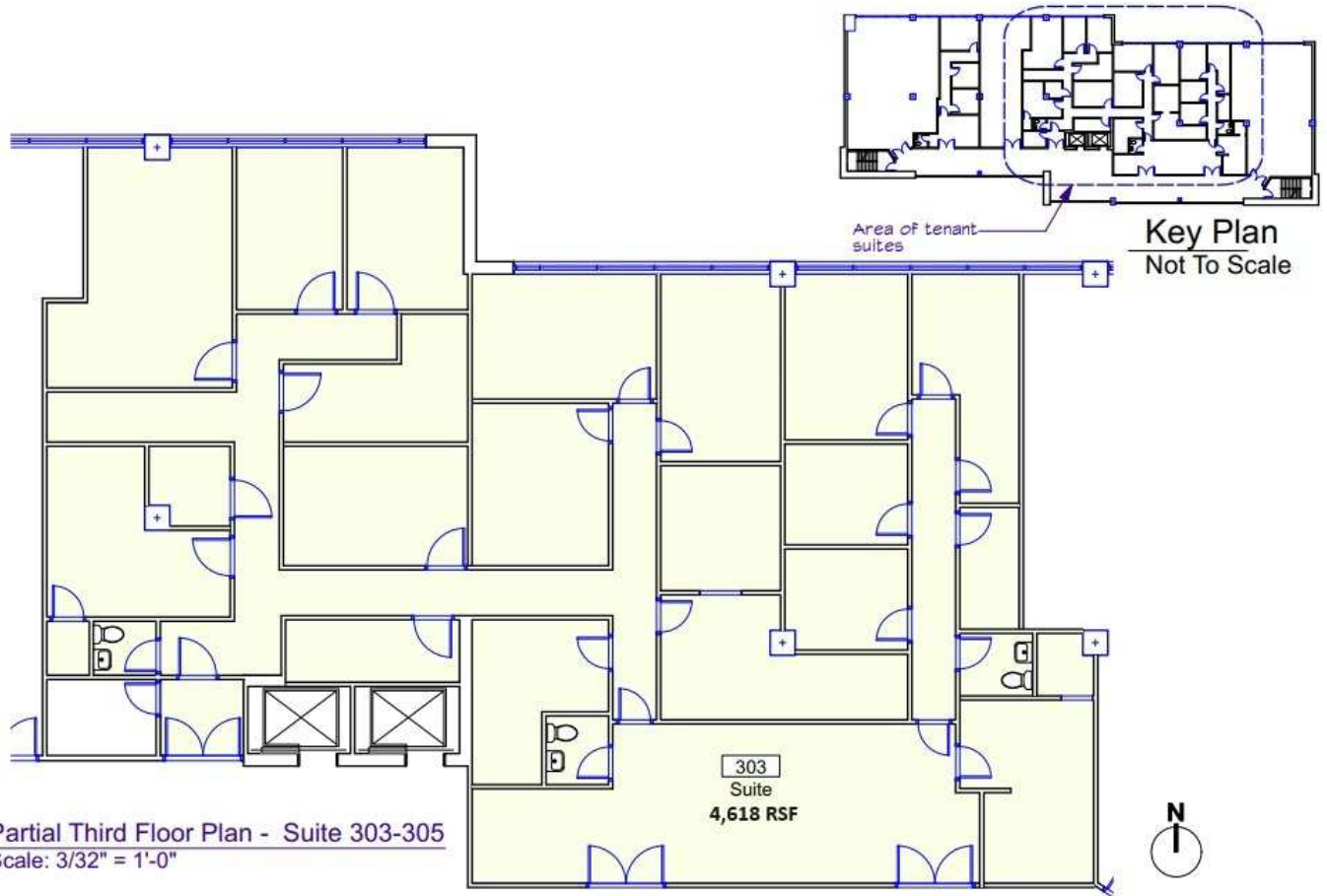
Drawn by: ams

**CINDY MCDONNELL FEINBERG**  
cfeinberg@feinbergrea.com  
Cell: 610.360.9733  
Direct: 610.709.6233

**CASEY KELLER**  
ckeller@feinbergrea.com  
Cell: 484.226.8081  
Direct: 610.709.6232



## Floor Plans



**4/4**  
**ARCHITECTURE**  
414 W. Broad Street, Suite 200  
Bethlehem, Pennsylvania 18018  
610.509.5992

All drawings and written materials appearing herein constitute original and unpublished work of the architect and may not be used or disclosed without prior consent of 4/4 Architecture, LLC Copyrighted 2023

Gateway Professional Center  
2045 Westgate Drive  
Bethlehem, PA 18017  
Suite 303-305

2045 Westgate.vwx  
Date: 11/10/2023  
Drawn by: ams

**Ste-303**  
2 OF 3

**CINDY MCDONNELL FEINBERG**    **CASEY KELLER**  
cfeinberg@feinbergrea.com    ckeller@feinbergrea.com  
Cell: 610.360.9733    Cell: 484.226.8081  
8 Direct: 610.709.6233    Direct: 610.709.6232

