

BRANDVIEW CAPITAL

# THE WINDWARD ARCADES



JOIN THE  
LEGACY



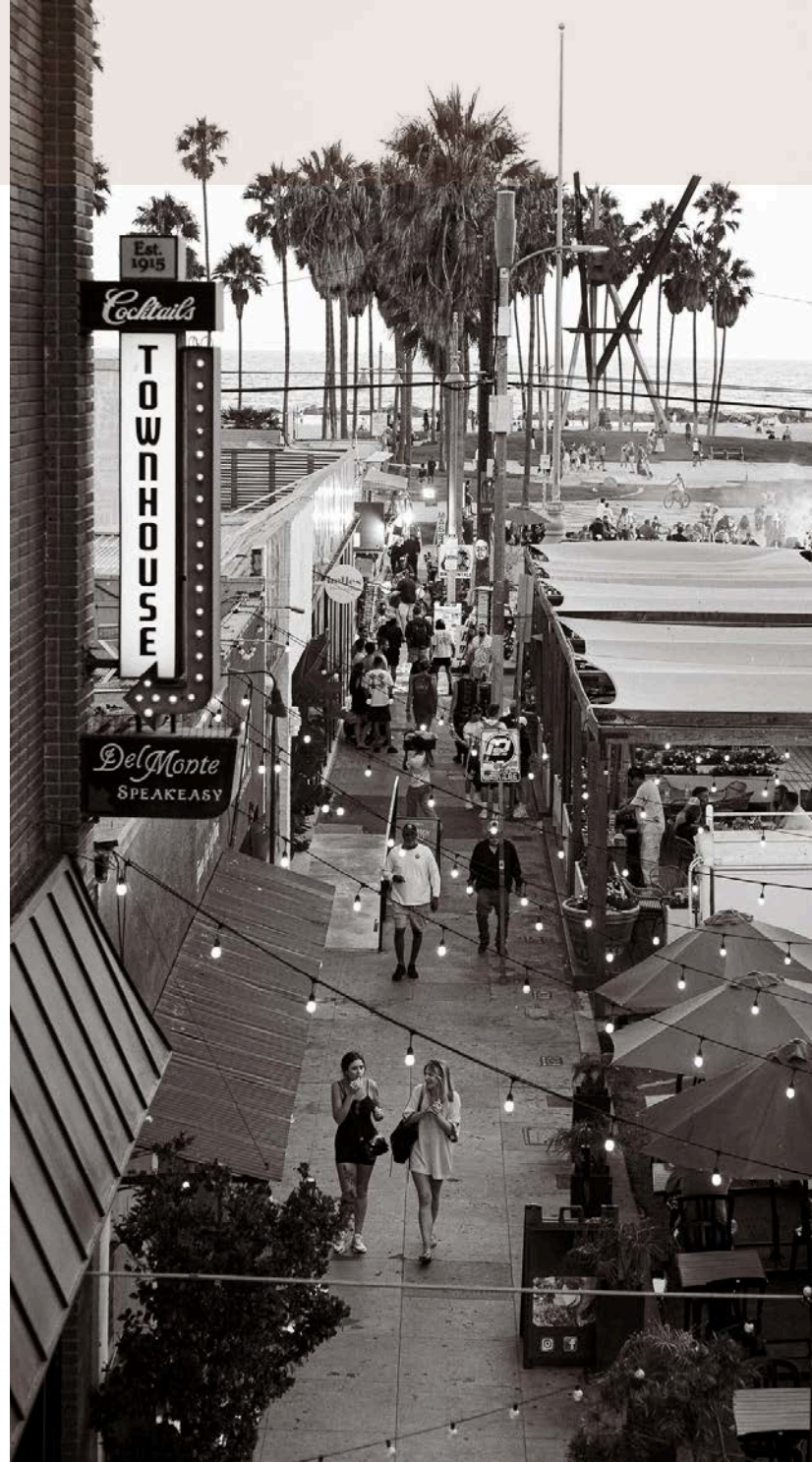
# THE WINDWARD ARCADES

## Join the Legacy

Introducing a space destined for tastemakers and visionary operators: wellness, lifestyle, hospitality, or something the world has yet to see.

This address holds more than 100 years of cultural impact and history. Positioned directly above the Venice Sign, Windward Arcades offers 5,531 square feet of indoor/outdoor space with a private rooftop deck and panoramic ocean views.

Equal parts experience, visibility, and vibe – turn Los Angeles' most iconic block into your exclusive clubhouse.





# A CANVAS FOR EXPERIENCE

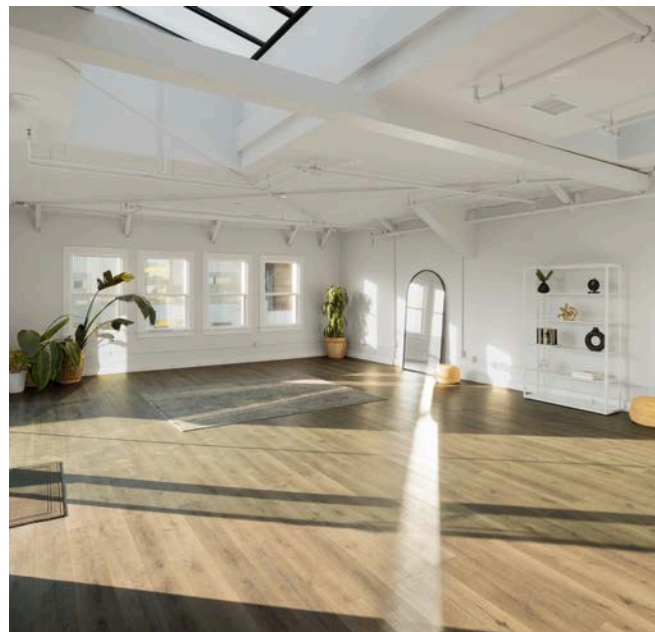


## Create Something for the Community

Every design detail is an opportunity to craft an experience, and every photo taken here becomes a piece of art for the archives.

Join the iconic brands that came before you.

Take the torch. Become part of Venice's cultural fabric.





# THE VENICE BILLBOARD EFFECT



**There's visibility - and then there's this.**

Every photo taken at the Venice sign puts your brand in the frame. Every tourist, every influencer, every drone shot - your brand lives in that view.

This is visibility that can't be bought. It's a billboard that never turns off.

*Source: laparks.org*





# WHO BELONGS HERE?

**This space isn't for everyone.  
It's for operators who elevate, experiment, and energize.**

---

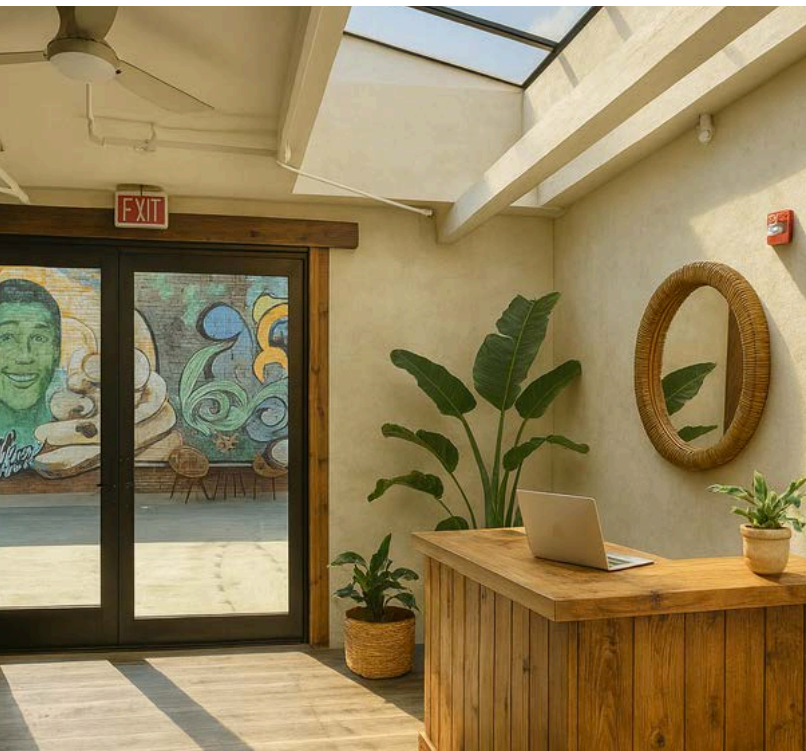
- Creative Collectives
- Wellness & Recovery
- Boutique Fitness
- Membership Clubs
- Experiential Retail
- Event & Hospitality

*The right tenant won't just occupy the roof. You'll shape the next chapter of Windward Avenue and Venice itself.*



# IMAGINE THE POSSIBILITIES

**Let Your Mind Run Wild.** We're inviting partners who share our vision – to transform this iconic rooftop into Venice's next cultural landmark.



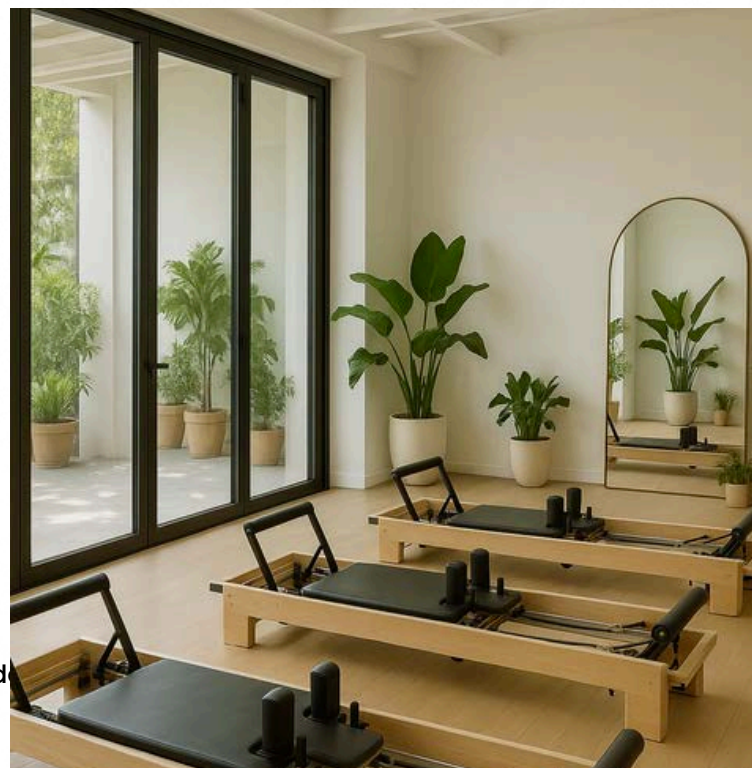


# CULTIVATE A COMMUNITY

**Transform a Landmark.** A platform for those who want to shape the future of Venice.



ward







# SPACE SPECS AND KEY FACTS

- ± 5,531 SF indoor/outdoor rooftop space (3,526 SF interior/2,030 SF deck)
- Dedicated parking upon request
- Rare private rooftop deck with ocean views
- Two restrooms in place
- Group B occupancy with CEX allowance
- Flexible terms and ability to customize



# FOR LEASING INFORMATION:



**Liz Rockmore**

[liz@brandviewcap.com](mailto:liz@brandviewcap.com)

(203) 952-1178

