

# 13351-13361 SADDLE RD. FORT MYERS, FL



CUSHMAN &  
WAKEFIELD

COMMERCIAL  
PROPERTY  
SOUTHWEST FLORIDA



## For Lease

### Property Highlights

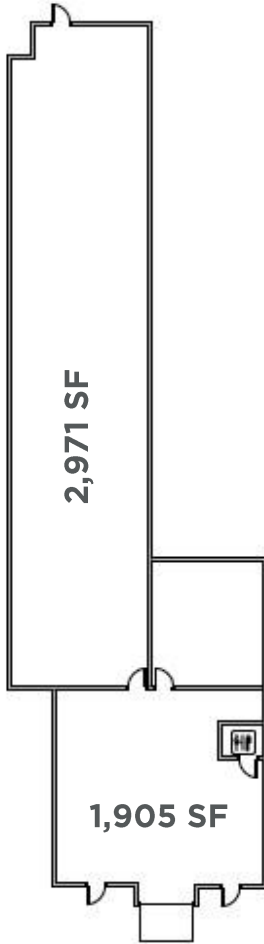
- Located on Saddle Road, with excellent visibility and frontage along Daniels Parkway
- Easy access to I-75, Southwest Florida International Airport, and major regional transportation routes
- Multiple overhead doors and truck access
- Designed for flex, showroom, light industrial, or distribution uses
- Situated within a growing commercial/industrial node of southwest Fort Myers with development activity and demand for flex space

LEASE RATE	\$13.00-\$14.00/SF
CAM RATE	\$5.89/SF
GLA	± 4,876-10,337 SF
LAND AREA	± 213,008 SF
YEAR BUILT	2010
PARKING RATIO	2.7 / 1,000 SF
ZONING	IDP - Industrial Planned Development
SUBMARKET	S Fort Myers/San Carlos

Better never settles

**GARY TASMAN**  
CEO / Principal Broker  
(239) 489-3600  
[gtsaman@cpswfl.com](mailto:gtsaman@cpswfl.com)

**SHAWN STONEBURNER**  
Senior Director  
(239) 489-3600  
[sstoneburner@cpswfl.com](mailto:sstoneburner@cpswfl.com)



## Unit Highlights

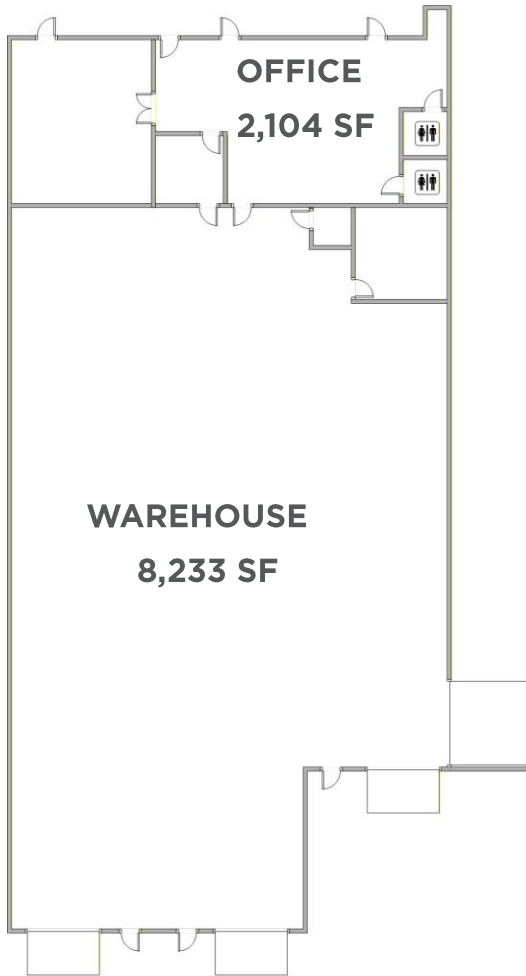
- Overhead door height: 10 FT x 12 FT
- Clear Height: 19 FT
- 2,971 SF of Warehouse space
- 1,905 SF of Office space
- Frontage on Daniels Pkwy
- Proximity to Southwest Florida International Airport



Unit	Unit Size	Lease Rate	CAM	Monthly Rent
Unit 106-107	4,876 SF	\$13.00 NNN	\$5.89	\$7,675.64

**GARY TASMAN**  
CEO / Principal Broker  
(239) 489-3600  
[gtsman@cpswfl.com](mailto:gtsman@cpswfl.com)

**SHAWN STONEBURNER**  
Senior Director  
(239) 489-3600  
[sstoneburner@cpswfl.com](mailto:sstoneburner@cpswfl.com)



## Unit Highlights

- 4 Overhead doors height: 10 FT x 12 FT
- Clear Height: 19 FT
- Truck well
- 8,233 SF of Warehouse space
- 2,104 SF of Office space
- Frontage on Daniels Pkwy
- Proximity to Southwest Florida International Airport



Unit	Unit Size	Lease Rate	CAM	Monthly Rent
Unit 209	10,337 SF	\$14.00 NNN	\$5.89	\$17,133.58

**GARY TASMAN**  
CEO / Principal Broker  
(239) 489-3600  
[gtsman@cpswfl.com](mailto:gtsman@cpswfl.com)

**SHAWN STONEBURNER**  
Senior Director  
(239) 489-3600  
[sstoneburner@cpswfl.com](mailto:sstoneburner@cpswfl.com)

# 13351-13361 SADDLE RD. FORT MYERS, FL



## CENTRAL LOCATION:

LOCATED IN FORT MYERS, THE PROPERTY BENEFITS FROM ITS STRATEGIC POSITION, JUST OFF DANIELS PARKWAY, OFFERING STRONG CONNECTIVITY TO SURROUNDING COMMERCIAL AND INDUSTRIAL ACTIVITY AS WELL AS CLOSE PROXIMITY TO SOUTHWEST FLORIDA INTERNATIONAL AIRPORT.

2024 Demographics	2-Miles	5-Miles	10-Miles
<b>Total Population</b>	9,293	79,790	380,889
<b>Total Households</b>	4,236	34,134	156,462
<b>Annual Population Growth 2024-2029</b>	4.2%	3.9%	3.7%
<b>Average Household Income</b>	\$129,754	\$108,872	\$86,699

Better never settles

**GARY TASMAN**  
CEO / Principal Broker  
(239) 489-3600  
[gtsaman@cpswfl.com](mailto:gtsaman@cpswfl.com)

**SHAWN STONEBURNER**  
Senior Director  
(239) 489-3600  
[sstoneburner@cpswfl.com](mailto:sstoneburner@cpswfl.com)