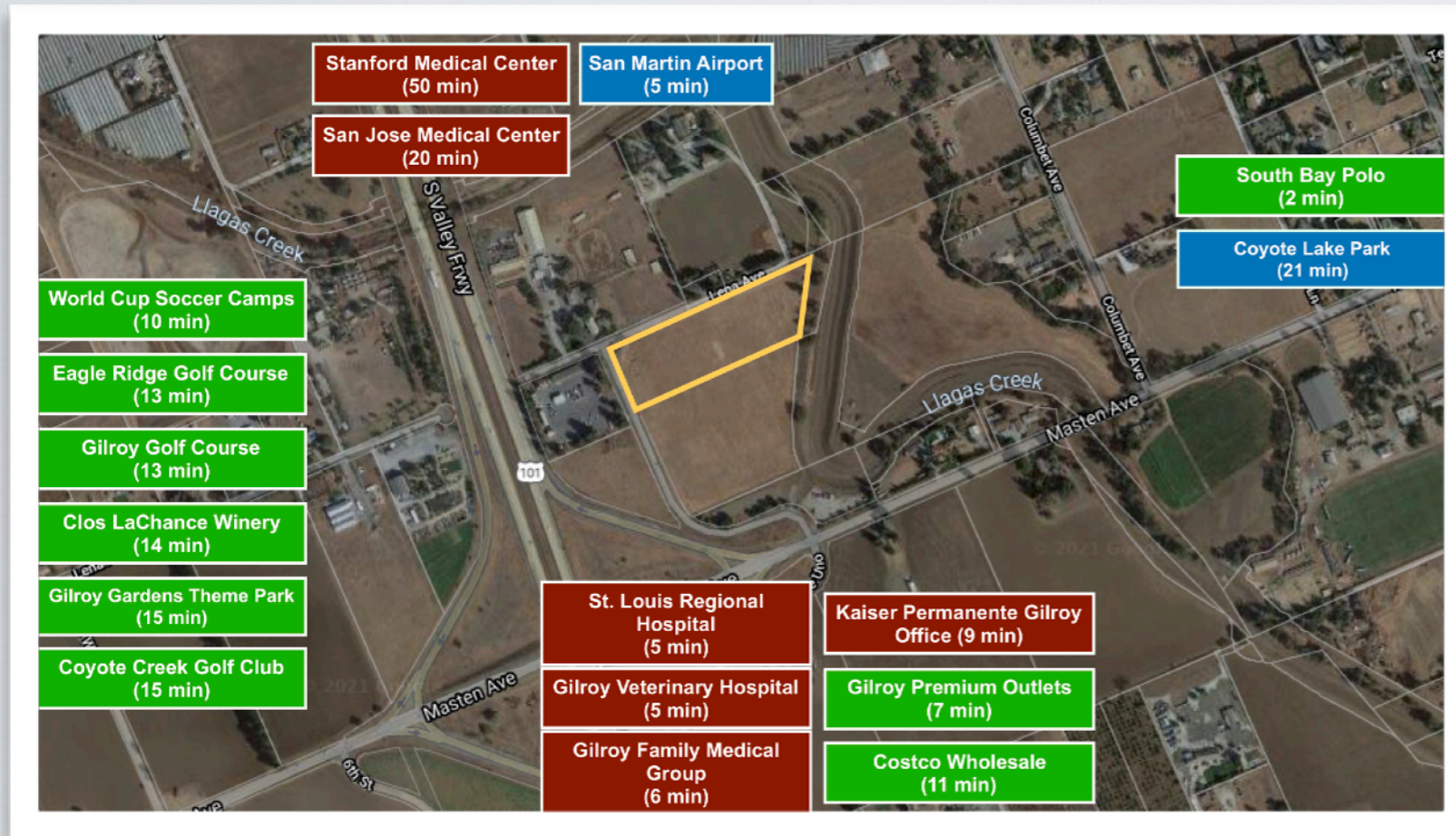


Commercial Land - Gilroy, Santa Clara

On HWY 101 - 6.234 ACRES / 271,544SF



- * Located Directly in Path of Growth
- * Area Neighborhood: Rucker/ Gilroy / San Martin
- * Zoning: RR-5Ac Potentials for Multi-Family, SFR
- * San Martin's Special Land Use Policy (ie Medical Facilities)
- * County: Santa Clara
- * APN: 830-06-052
- * 5 min to Airport, Easy Access to 101 FWY
- * Close to local wineries, Golf courses and Parks.
- * Suburban Development Potential
- * So many possibilities! Don't miss out on the great opportunity
- * Drive-by showing

Amazing 6.234 Acres property!

Fantastic South East San Martin Location

Gateway to Silicon Valley and Medical Communities

Planned stop for High Speed Rail SF - LA

**BERKSHIRE
HATHAWAY** | California
HomeServices Properties

COMMERCIAL DIVISION



Alice Schroeder & Chris Lee

Associate Broker | Realtor®
DRE 01319910 | DRE 02107257



949.793.1738



aschroeder@bhhsca.com
chrislee@bhhsca.com





Stanford Medical Center (50 Min)



Kaiser Permanente (9 Min)

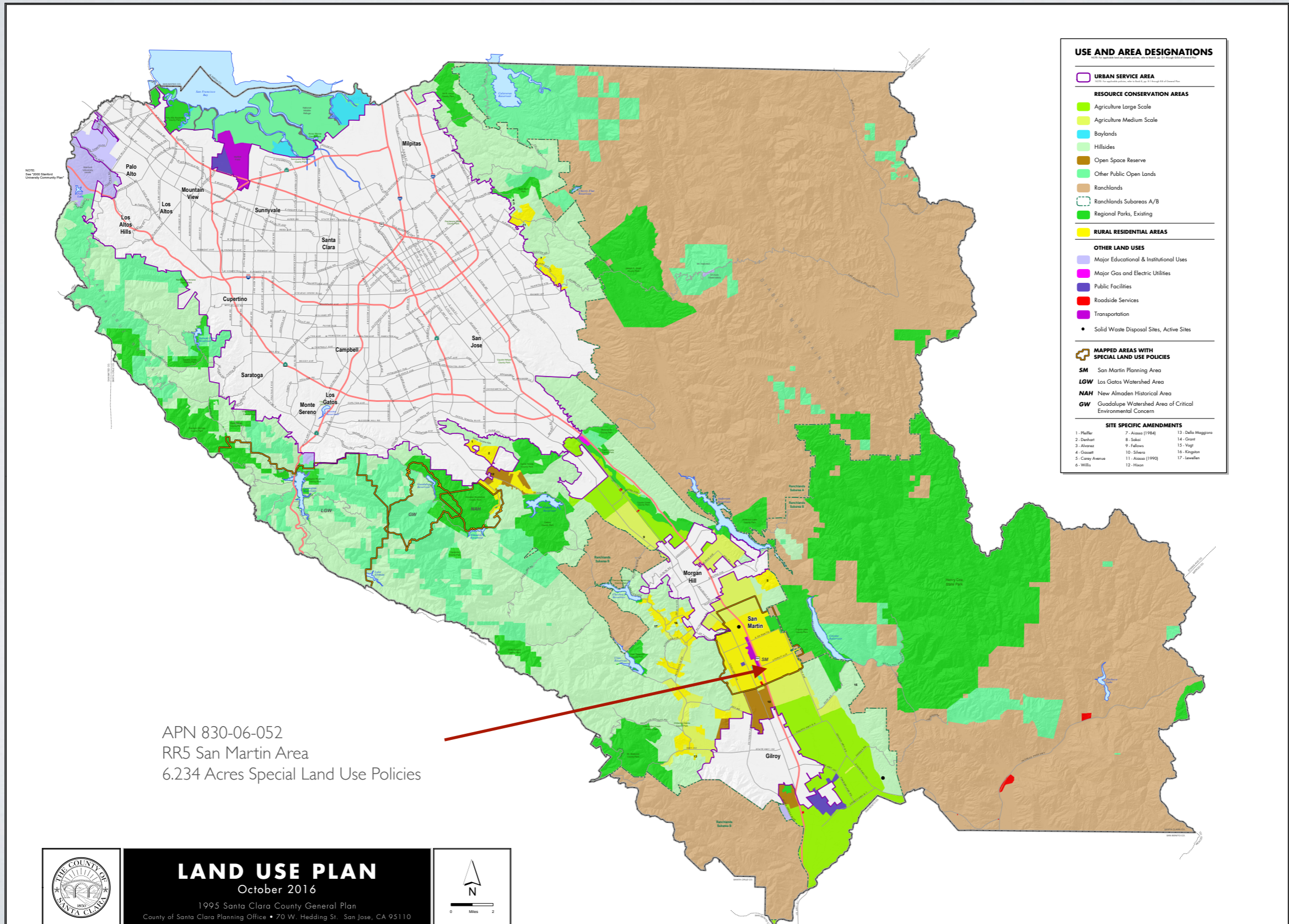


St. Louise Regional Hospital (5 Min)



San Jose Medical Center (20 Min)

LAND USE PLAN



USE AND AREA DESIGNATIONS

URBAN SERVICE AREA
As defined by the Santa Clara County General Plan, Chapter 11, Article 11.1, Section 11.1.01, and the Santa Clara County Ordinance 1995-01

RESOURCE CONSERVATION AREAS

- Agriculture Large Scale
- Agriculture Medium Scale
- Baylands
- Hillsides
- Open Space Reserve
- Other Public Open Lands
- Ranchlands
- Ranchlands Subareas A/B
- Regional Parks, Existing

RURAL RESIDENTIAL AREAS

OTHER LAND USES

- Major Educational & Institutional Uses
- Major Gas and Electric Utilities
- Public Facilities
- Roadside Services
- Transportation
- Solid Waste Disposal Sites, Active Sites

MAPPED AREAS WITH SPECIAL LAND USE POLICIES

- SM** San Martin Planning Area
- LGW** Los Gatos Watershed Area
- NAH** New Almaden Historical Area
- GW** Guadalupe Watershed Area of Critical Environmental Concern

SITE SPECIFIC AMENDMENTS

1 - Pfeiffer	7 - Atasco (1984)	13 - Della Maggiora
2 - DeWitt	8 - Sakai	14 - Grant
3 - Alvarez	9 - Fellows	15 - Vogt
4 - Cassatt	10 - Silveira	16 - Kingston
5 - Carey Avenue	11 - Atasco (1990)	17 - Lawellen
6 - Willis	12 - Mason	

APN 830-06-052
 RR5 San Martin Area
 6.234 Acres Special Land Use Policies





August 05, 2021 02:33:22 PM. The GIS data used in this analysis was compiled from various sources. While deemed reliable, the Planning Office assumes no liability.

Property Location Information

APN: **830-06-052** [Assessor's Map](#)

Site Address:

Recorded Size (Assessor Database): **269,201 sq. ft. / 6.2 acres**

Computed Size (GIS): **271,427 sq. ft. / 6.2 acres**

TRA: **67007**

Planning and Development Information

General Plan: **Rural Residential (100%)**

USA: **None**

SOI: **None**

Zoning: **RR-5Ac-sr (100%)**

Supervisor District: **1**

Approved Building Site: **Research needed to evaluate parcel as a Building Site**

Special Area Policies and Information

- San Martin Planning Area
- HCP Area
- Fire Responsibility Area: LRA (100%)
- Fire Protection District: South Santa Clara County Fire Protection District
- Geohazard: County liquefaction hazard zone
- Historic Parcel: NO
- FEMA Flood Zone: AE (66.3%), AE (24.1%), D (9.7%)
- Central Coast Regional Water Quality Control Board Special Riparian Setback Area
- Watershed: Central Coast
- Rain isohyet: 19 inches
- Nearest named creek: LLAGAS CREEK (90 feet)
- Nearest named lake: Coyote Reservoir (15361 feet)
- Near county maintained road(s): LENA AVENUE, NONAME UNO

