

ELAINE FARMS | PHASES 1 - 4

North of the Northeast Corner of Pinal Ave and Kortsen Road | CASA GRANDE, AZ

www.willislandco.com

Exclusively Presented By

Ryan Willis

480.507.6200

ryan@willislandco.com

3850 E. Baseline Road, Ste. 118
Mesa, Arizona 85206

WILLIS LAND
COMPANY

PROPERTY DESCRIPTION

Location:

North of the Northeast Corner of Pinal Ave and Kortsen Road

Acreage:

+/- 216.69 Acres

Zoning:

R-2 Zoning (Allows For 5' x 5' Side Yard Setbacks)

Lots:

Preliminary Plat Approved for 715 Lots

Final Plat Ready for Submittal Now

*Plat Available Upon Request

- 45' x 120' (455 Lots)
 - 50' x 120' (260 Lots)
- Total Lots = 715 Lots

Utilities:

Electric: APS

Telephone: Qwest/ Cox Communications

Water: Arizona Water Company (*CAWS)

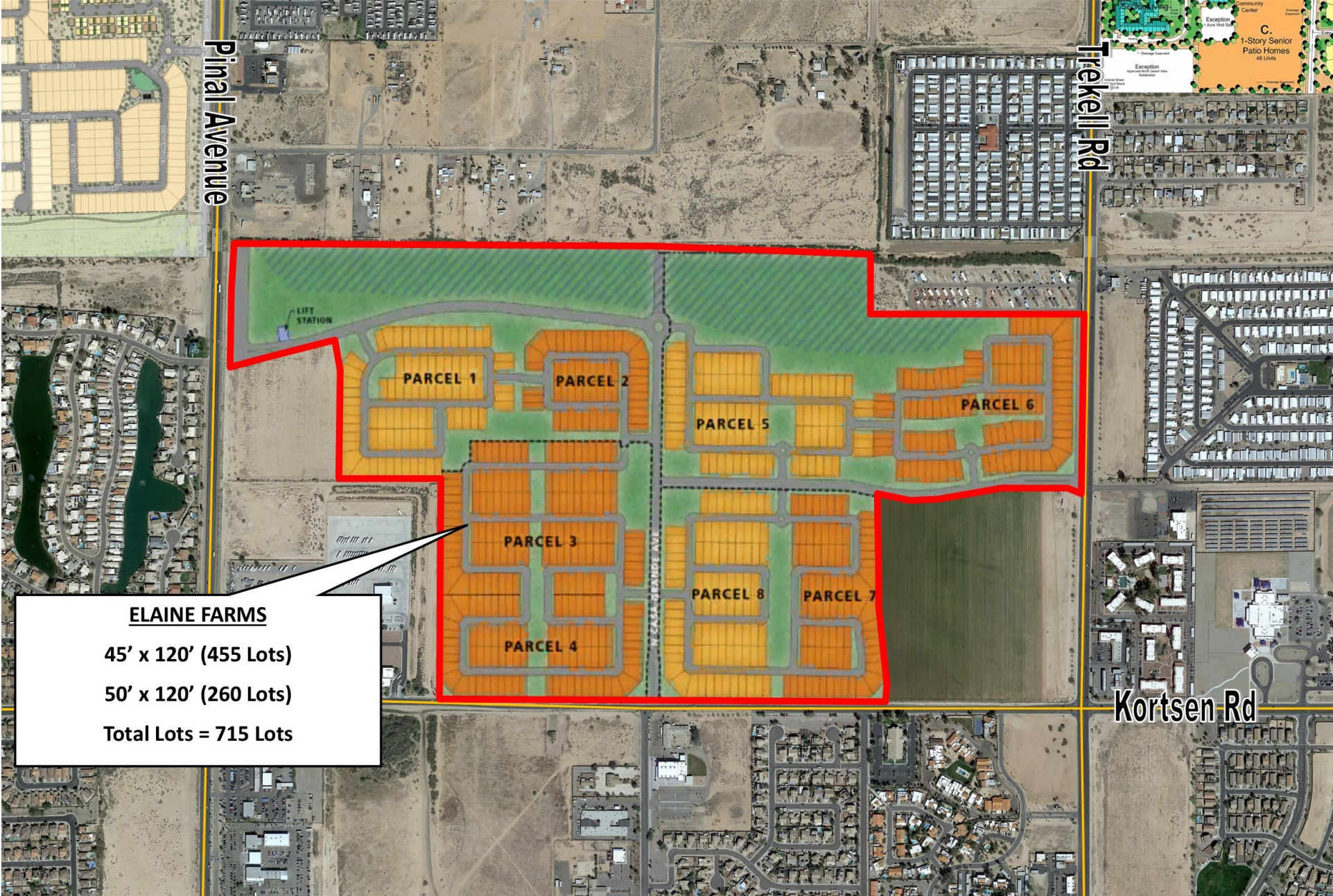
Sewer: City of Casa Grande

Price:

SUBMIT OFFER

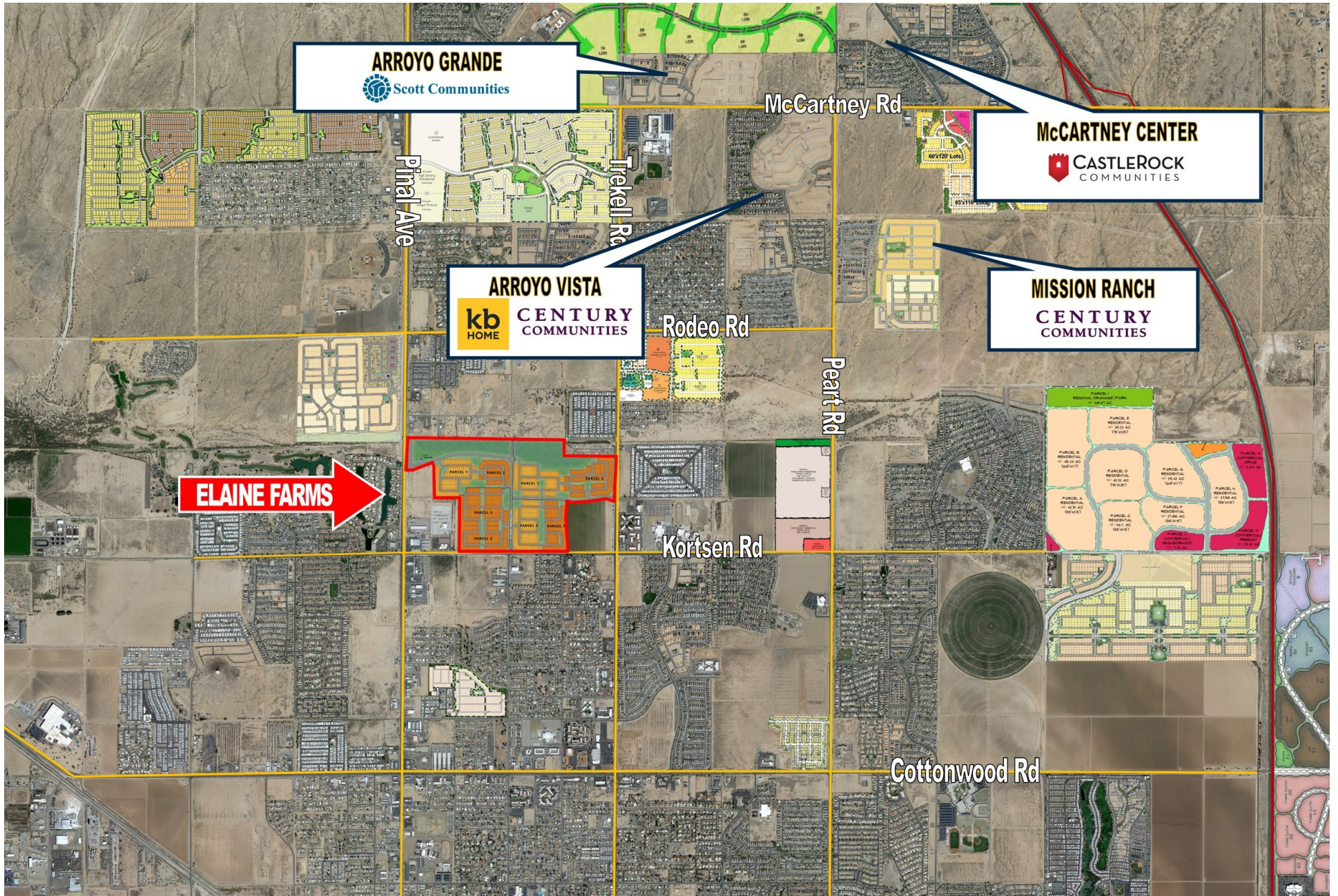
All Information contained herein is from sources deemed reliable but not guaranteed. Buyer should be satisfied as to the accuracy of all data. Offer subject to prior sale, price change or withdrawal.

Lot Breakdown



ELAINE FARMS
45' x 120' (455 Lots)
50' x 120' (260 Lots)
Total Lots = 715 Lots

BUILDER MAP



INDUSTRY MAP



STATE OF ARIZONA
DEPARTMENT OF WATER RESOURCES
CERTIFICATE OF ASSURED WATER SUPPLY

This is to certify that

~~ABCDW, LLC, an Arizona limited liability company, owner,~~
has met the requirements of A.R.S. §§45-576 and the applicable regulations, and

~~By powers vested in the Director of the Arizona Department of Water Resources by the State of Arizona, and subject to the conditions contained in the applicable regulations,~~

~~Is issued this Certificate of Assured Water Supply for~~

~~Elaine Farms
Township 6 South, Range 6 East, Section 08
GSRB&M Pinal County, PINAL Active Management Area~~

Sufficient water of adequate quality will be continuously available to satisfy the water demand of the referenced subdivision for at least one hundred years. The referenced subdivision consists of **532 lots** as described in the preliminary plat on file with the Department, and has an estimated water demand of **443,66 acre-feet per year**. The subdivision will be served groundwater by **Arizona Water Co - Casa Grande.**

This Certificate is invalid as to any entity not named above.
This Certificate may be assigned pursuant to A.A.C. R12-15-705.

Certificate Number: 27-402058,0000



ARIZONA DEPARTMENT OF WATER RESOURCES

Andria K. Smith-Walsh
Assistant Director

19 Oct. 2007
Date

TYPE A CERTIFICATE

LOCATION AERIAL

