



# WAREHOUSE FOR SALE

7005 Stapoint Ct, Winter Park, FL 32792

Desirable building / few on the market

## PROPERTY HIGHLIGHTS

- Exceptional Winter Park address
- Located only 20 minutes from Downtown Orlando
- Great frontage on Stapoint Ct
- Exceptional signage and very well maintained
- 18' ceiling height and heavy power
- Three 12'x12' grade level roll-up doors
- Secure, fenced yard on one acre lot



### OFFERING PRICE:

\$2,695,000



### SQUARE FOOTAGE:

12,500± sf with 2,500± office space including showroom



### ZONING:

I-1/I-5, Orange County



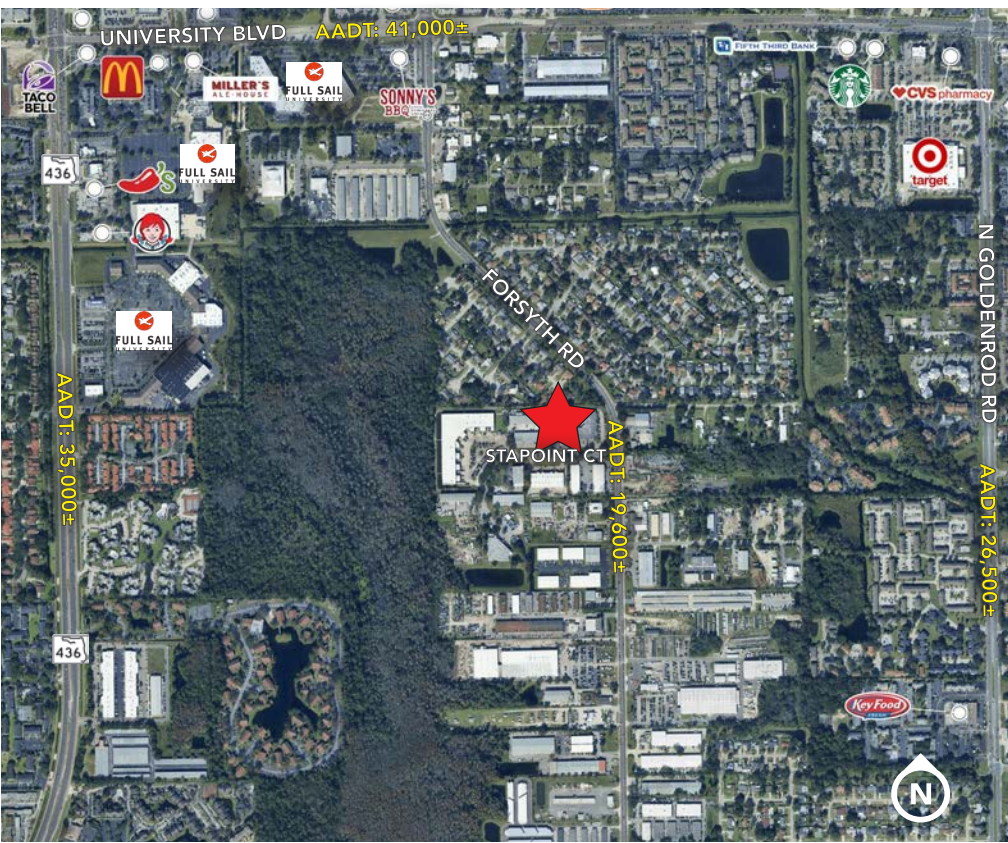
### PARKING:

18 striped spaces



### YEAR BUILT:

1985 (Block & Metal)



**HARBERT**  
REALTY SERVICES

**DAMIEN MADSEN**

[dmadsen@harbertrealty.com](mailto:dmadsen@harbertrealty.com) | 407.256.2844

**JOSH SMITH**

[jsmith@harbertrealty.com](mailto:jsmith@harbertrealty.com) | 407.377.4050

For More Information: [HarbertRealty.com](http://HarbertRealty.com)  
400 S Park Ave, Suite 225, Winter Park, FL 32789

# WAREHOUSE FOR SALE

7005 Stapoint Ct, Winter Park, FL 32789

EXTERIOR PHOTOS



**HARBERT**  
REALTY SERVICES

**DAMIEN MADSEN**

[dmadsen@harbertrealty.com](mailto:dmadsen@harbertrealty.com) | 407.256.2844

**JOSH SMITH**

[jsmith@harbertrealty.com](mailto:jsmith@harbertrealty.com) | 407.377.4050

*For More Information: [HarbertRealty.com](http://HarbertRealty.com)*

400 S Park Ave, Suite 225  
Winter Park, FL 32789

# WAREHOUSE FOR SALE

7005 Stapoint Ct, Winter Park, FL 32789

AERIAL



**HARBERT**  
REALTY SERVICES

**DAMIEN MADSEN**

dmadsen@harbertrealty.com | 407.256.2844

**JOSH SMITH**

jsmith@harbertrealty.com | 407.377.4050

*For More Information: HarbertRealty.com*

400 S Park Ave, Suite 225  
Winter Park, FL 32789