

**SUITE 220 - LEASE SUMMARY**

**FOR LEASE | 2,314 SF OFFICE SPACE**  
300 OSWEGO POINTE, LAKE OSWEGO, OR 97034



**LOCATION DESCRIPTION**

Located in affluent Lake Oswego, this property lies directly between two beautiful parks and features 180 degree Willamette riverfront views. The parks are joined by a forested running path with an entrance directly to the side of the building. Trendy downtown Lake Oswego is just minutes away with its high end shopping, coffee shops, restaurants, pubs and grocery stores. Downtown Portland is only 15 minutes away via Hwy 43.

**PROPERTY HIGHLIGHTS**

- Six private offices
- Kitchen
- Reception
- All suites have Willamette River views
- Free parking 6:1,000 ratio
- Walking distance to downtown Lake Oswego
- Located just off Hwy 43/N State St

**PROPERTY DESCRIPTION**

2,314 SF office space available in 13,917 SF beautiful brick building. Elevator served and ADA accessible. Amenities include boat docks, pedestrian paths, plentiful parking, and a full service corporate event center.

**OFFERING SUMMARY**

Lease Rate:	Call for details
Available SF:	2,314SF
Building Size:	13,917 SF

**MICK GRIEP**

Associate Broker  
Mick@CommercialRENW.com  
503.502.9676

**DENISE BROHOSKI**

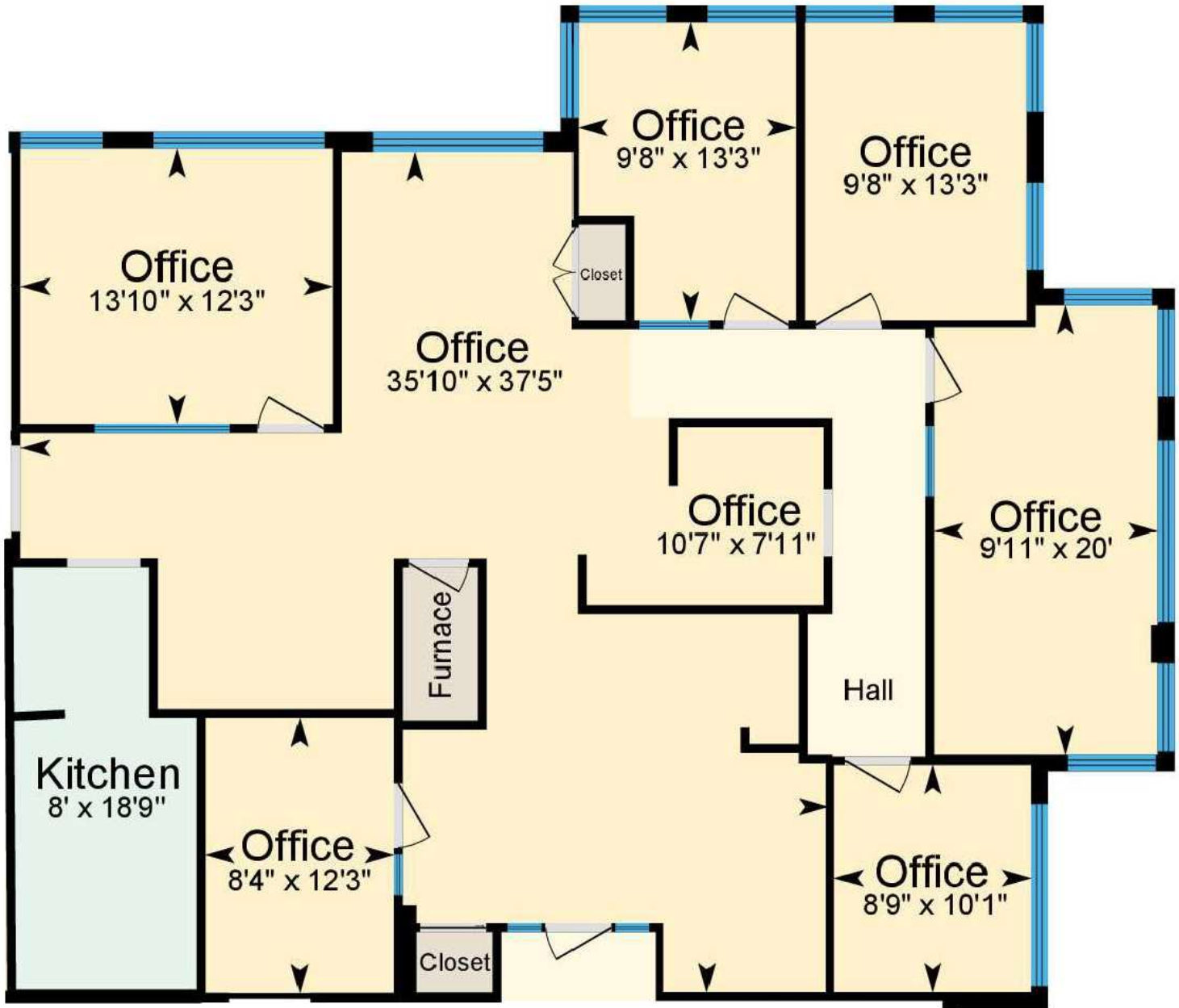
Owner - Commercial Real Estate NW  
Principal Broker - OR & WA  
Denise@CommercialRENW.com  
503.309.5106

Commercial Real Estate NW  
7320 SW Hunziker St. Ste. 203  
Tigard, OR 97223  
CommercialRENW.com



**SUITE 220 FLOOR PLAN**

FOR LEASE | 2,314 SF OFFICE SPACE  
300 OSWEGO POINTE, LAKE OSWEGO, OR 97034

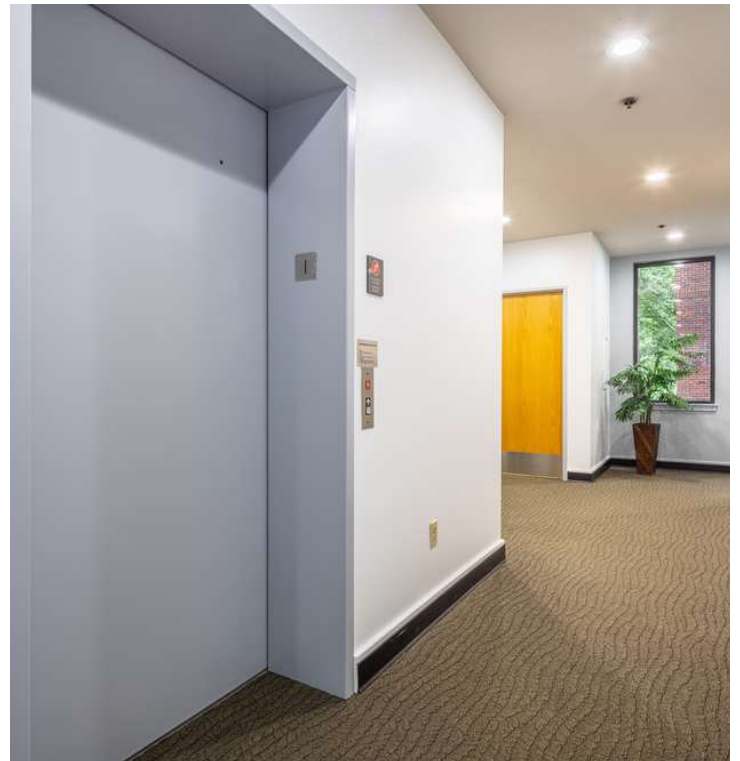


**MICK GRIEP**  
Associate Broker  
Mick@CommercialRENW.com  
503.502.9676

**DENISE BROHOSKI**  
Owner - Commercial Real Estate NW  
Principal Broker - OR & WA  
Denise@CommercialRENW.com  
503.309.5106

Commercial Real Estate NW  
7320 SW Hunziker St. Ste. 203  
Tigard, OR 97223  
CommercialRENW.com

FOR LEASE | 2,314 SF OFFICE SPACE  
300 OSWEGO POINTE, LAKE OSWEGO, OR 97034



**MICK GRIEP**

Associate Broker  
Mick@CommercialRENW.com  
503.502.9676

**DENISE BROHOSKI**

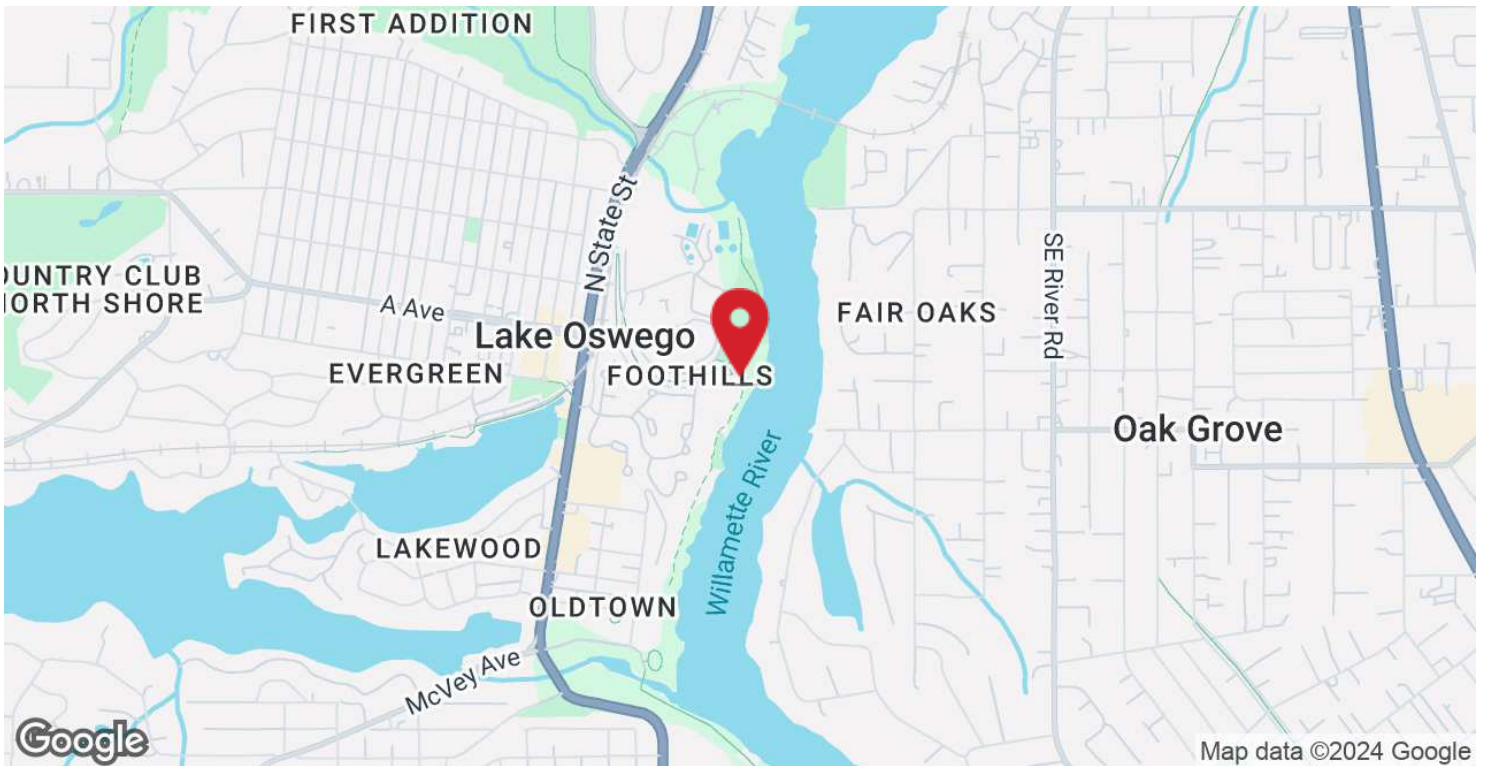
Owner - Commercial Real Estate NW  
Principal Broker - OR & WA  
Denise@CommercialRENW.com  
503.309.5106

Commercial Real Estate NW  
7320 SW Hunziker St. Ste. 203  
Tigard, OR 97223  
CommercialRENW.com



LOCATION MAP

FOR LEASE | 2,314 SF OFFICE SPACE  
300 OSWEGO POINTE, LAKE OSWEGO, OR 97034



**MICK GRIEP**  
Associate Broker  
Mick@CommercialRENW.com  
503.502.9676

**DENISE BROHOSKI**  
Owner - Commercial Real Estate NW  
Principal Broker - OR & WA  
Denise@CommercialRENW.com  
503.309.5106

Commercial Real Estate NW  
7320 SW Hunziker St. Ste. 203  
Tigard, OR 97223  
CommercialRENW.com

RETAILER MAP

FOR LEASE | 2,314 SF OFFICE SPACE  
300 OSWEGO POINTE, LAKE OSWEGO, OR 97034



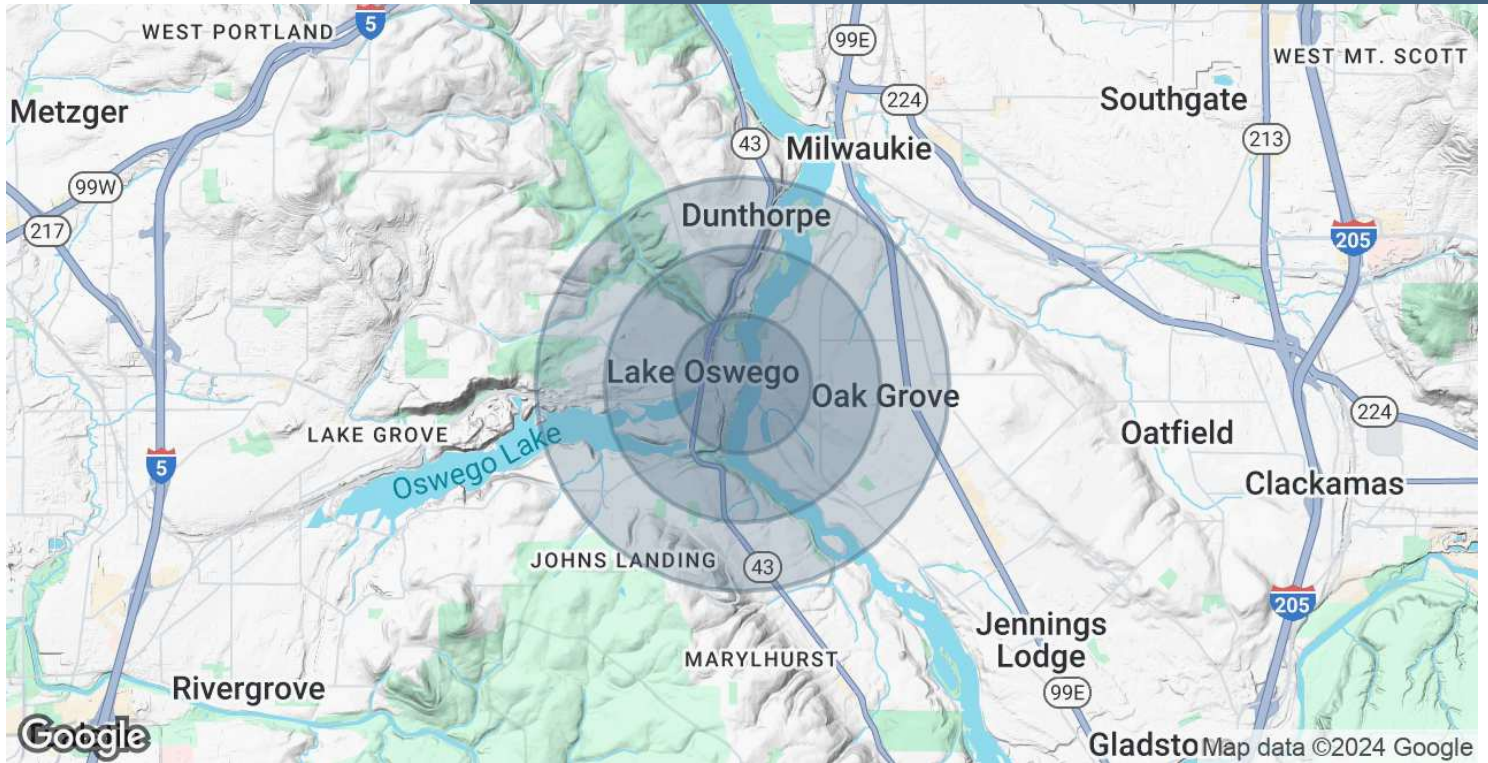
Map data ©2024 Imagery ©2024 Airbus, Maxar Technologies, Metro, Portland Oregon

**MICK GRIEP**  
Associate Broker  
Mick@CommercialRENW.com  
503.502.9676

**DENISE BROHOSKI**  
Owner - Commercial Real Estate NW  
Principal Broker - OR & WA  
Denise@CommercialRENW.com  
503.309.5106

Commercial Real Estate NW  
7320 SW Hunziker St. Ste. 203  
Tigard, OR 97223  
CommercialRENW.com

FOR LEASE | 2,314 SF OFFICE SPACE  
300 OSWEGO POINTE, LAKE OSWEGO, OR 97034



POPULATION	0.5 MILES	1 MILE	1.5 MILES
Total Population	2,754	10,741	23,290
Average Age	48	47	47
Average Age (Male)	0	0	0
Average Age (Female)	0	0	0
HOUSEHOLDS & INCOME	0.5 MILES	1 MILE	1.5 MILES
Total Households	1,315	4,801	10,143
# of Persons per HH	2.1	2.2	2.3
Average HH Income	\$128,364	\$142,652	\$146,985
Average House Value	\$925,402	\$906,384	\$864,189

Demographics data derived from AlphaMap

**MICK GRIEP**

Associate Broker  
Mick@CommercialRENW.com  
503.502.9676

**DENISE BROHOSKI**

Owner - Commercial Real Estate NW  
Principal Broker - OR & WA  
Denise@CommercialRENW.com  
503.309.5106

Commercial Real Estate NW  
7320 SW Hunziker St. Ste. 203  
Tigard, OR 97223  
CommercialRENW.com