

152 LONSDALE AVE
NORTH VANCOUVER, BC

1,151 SQ FT OF RETAIL ON THE
CORNER OF LONSDALE & 2ND ST



FOR LEASE

BRENT BRNADA
PERSONAL REAL ESTATE CORPORATION
778.956.8876 | brentb@remax.net

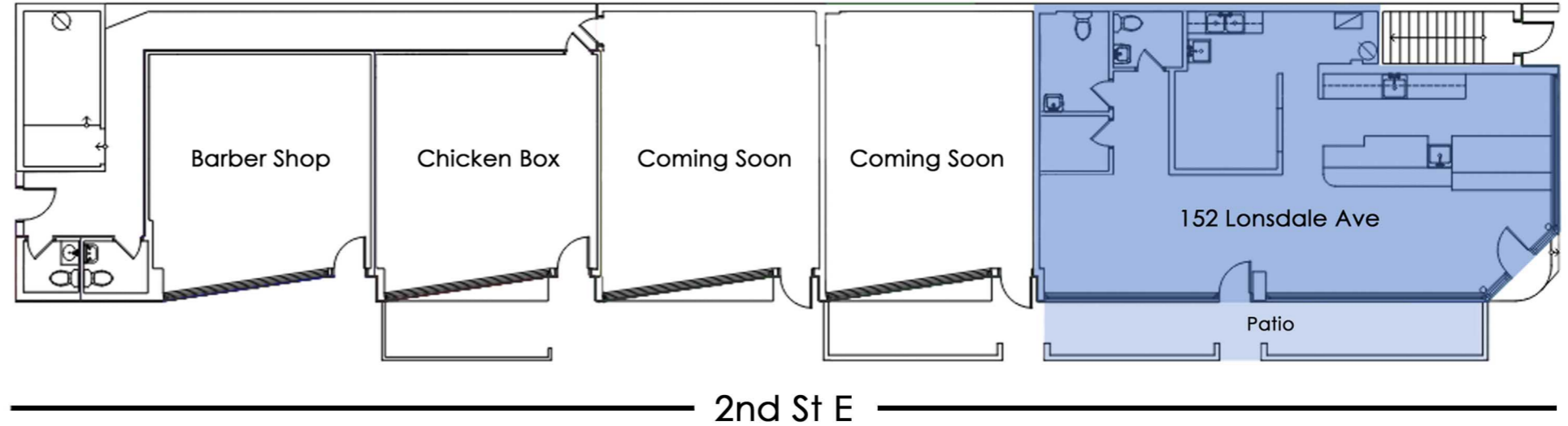
RE/MAX
COMMERCIAL

LOWER LONSDALE

152 Lonsdale Ave, North Vancouver BC

AREA	1,151 SQ FT
BASIC RENT	\$75.00 PER SQ FT
ADDITIONAL RENT	\$19.85 PER SQ FT (2026 ESTIMATE)
ZONING	LL-2 (LOWER LONSDALE MIXED USE)

Exceptional retail or restaurant opportunity with an airy feel having a glass storefront spanning the entire exterior frontage of the unit and a ceiling height upwards of 10.5' +/- . Currently operated as food service. Restaurant venting available.



THE NEIGHBOURHOOD



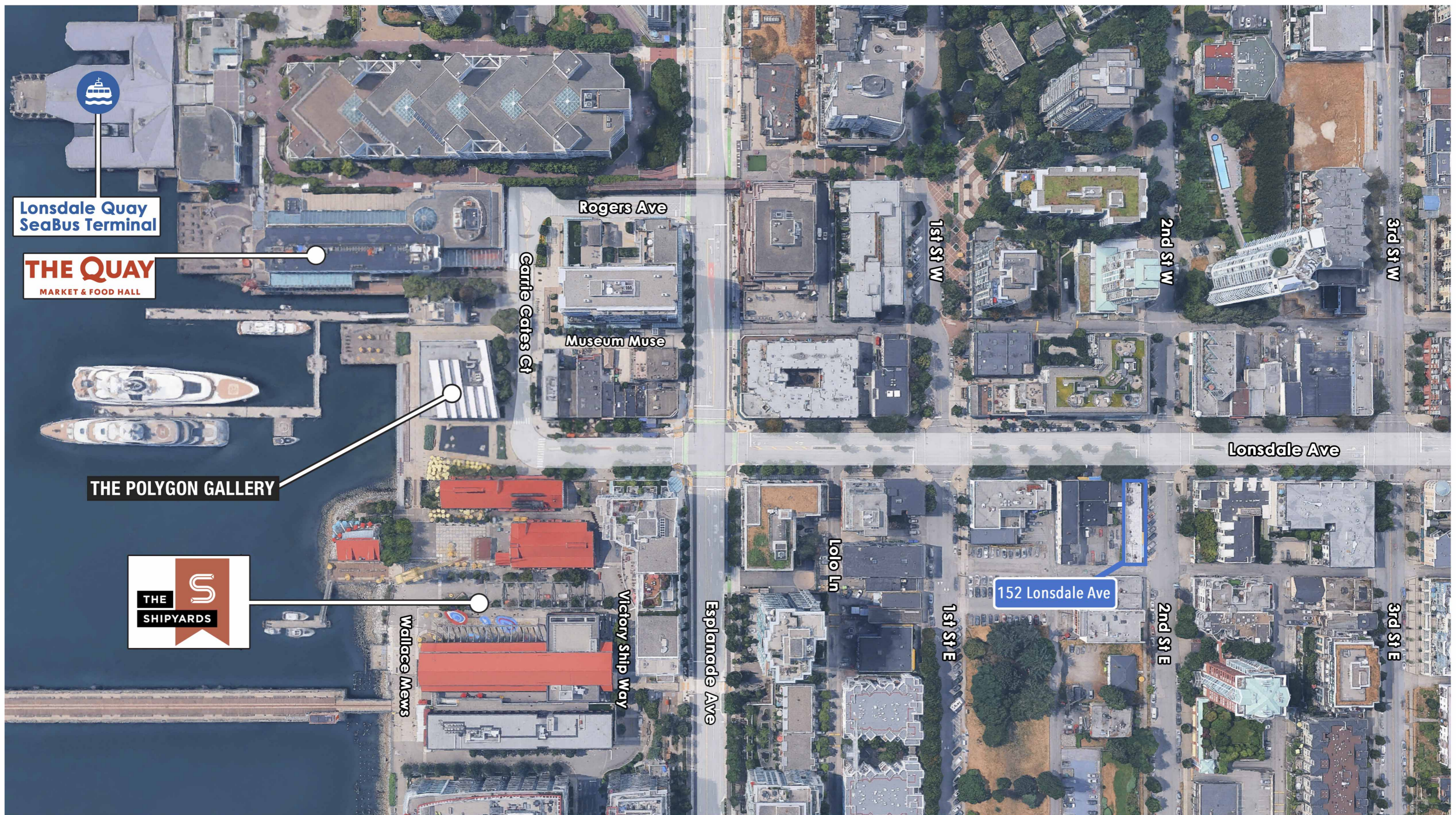
THE LOCATION

Highly exposed retail on the southeast corner of Lonsdale Ave and 2nd Street.

Many national brand tenants and well established local culinary food and other retail as well as service and amenity based businesses make up the landscape along Lonsdale Ave, surrounding cross streets as well as nearby back lanes.

The Shipyards is a major North Shore hub for tourists and locals attracting thousands weekly supplemented by events including the Night Markets, festivals and concerts, the SeaBus, Lonsdale Quay Market and other amenities including The Polygon Gallery making Lower Lonsdale a vibrant, high-traffic destination.

THE OPPORTUNITY



AERIAL MAP

[CLICK HERE](#) FOR A
BUSINESS DIRECTORY
IN LOWER LONSDALE

BRENT BRNADA
PERSONAL REAL ESTATE CORPORATION
778.956.8876 | brentb@remax.net





For more information, please contact:

BRENT BRNADA
PERSONAL REAL ESTATE CORPORATION
brentb@remax.net 778-956-8876

RE/MAX CITY REALTY
101 - 2806 Kingsway Ave
Vancouver, BC | V5R 5T5

RE/MAX
COMMERCIAL

CREinvestment.ca

152 Lonsdale Ave