

2335 S Michigan Ave.

Chicago, IL

TURNKEY MED SPA FOR LEASE

Step into the turn-key med spa or wellness space at 2335 South Michigan Avenue, offering prominent street frontage for high visibility. With a full-service gross rental rate, this property provides ample collaboration opportunity with a premier Plastic Surgeon as your co-tenant, ensuring a synergistic environment for entrepreneurial business owners. Convenient access to public transportation options and high foot traffic from local and visiting customers make this the ideal setting for a wellness-focused venture. Don't miss this rare opportunity to lease a space that's perfectly suited for a successful and dynamic medical or wellness-related business, nestled in a bustling Chicago neighborhood.



Lease Rate:

\$30.00 per month (Gross)

Available SF:

4,000 SF

Availability:

Immediate

Building Size:

12,000 SF

Lease Term:

\$30.00 per month (Gross)

2335 S Michigan Ave.
Chicago, IL

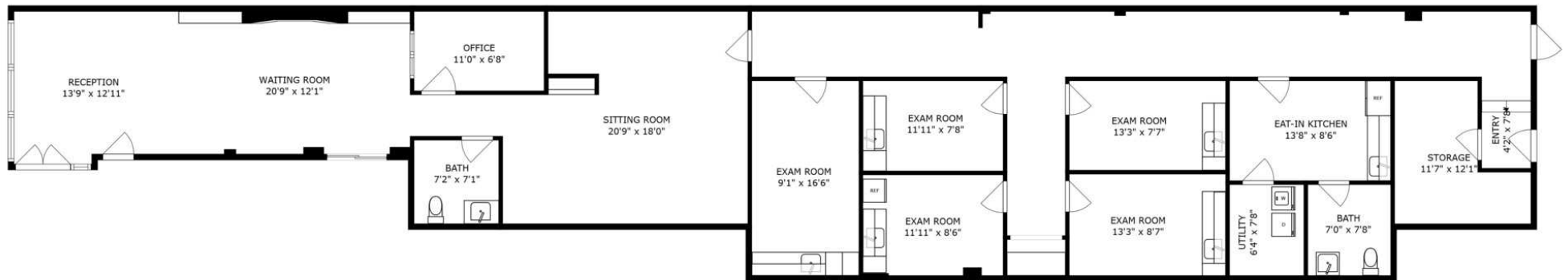
ADDITIONAL PHOTOS



2335 S Michigan Ave.

Chicago, IL

FLOOR PLANS



SIZES AND DIMENSIONS ARE APPROXIMATE, ACTUAL MAY VARY.

2335 S Michigan Ave.

Chicago, IL

Population

0.5 MILES

10,171

TOTAL POPULATION

23,946 | 44,519
0.8 MILES | 1 MILE

44

AVERAGE AGE

43 | 41
0.8 MILES | 1 MILE

Households and Income

0.5 MILES

3,944

TOTAL HOUSEHOLDS

9,664 | 18,503
0.8 MILES | 1 MILE

2.6

OF PERSONS PER HH

2.5 | 2.4
0.8 MILES | 1 MILE

0.5 Miles

43

AVERAGE AGE (MALE)

41 | 40
0.8 MILES | 1 MILE

45

AVERAGE AGE (FEMALE)

44 | 42
0.8 MILES | 1 MILE

0.5 Miles

\$80,136

AVERAGE HH INCOME

\$83,184 | \$94,237
0.8 MILES | 1 MILE

\$502,676

AVERAGE HOUSE VALUE

\$492,405 | \$495,106
0.8 MILES | 1 MILE

* Demographic data derived from 2020 ACS - US Census

