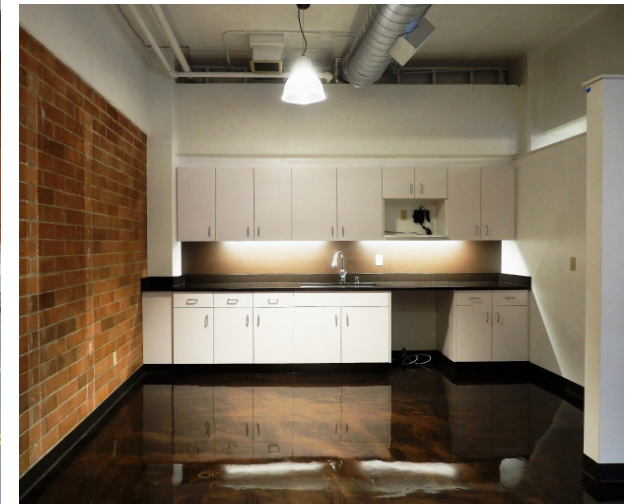


# 1120 Pacific

1120 Pacific Ave Tacoma, WA



**FOR LEASE**

Office Space in Heart of Downtown Tacoma

**Josh Heyum**  
Principal & Broker  
425.445.5799  
joshheyum@gmail.com

**Jake Staniszewski**  
Associate & Broker  
425.284.4270 ext. 1009  
jake@vistapacificgroupinc.com

**VISTA PACIFIC GROUP**  
LEASING AND ACQUISITIONS

# 1120 Pacific

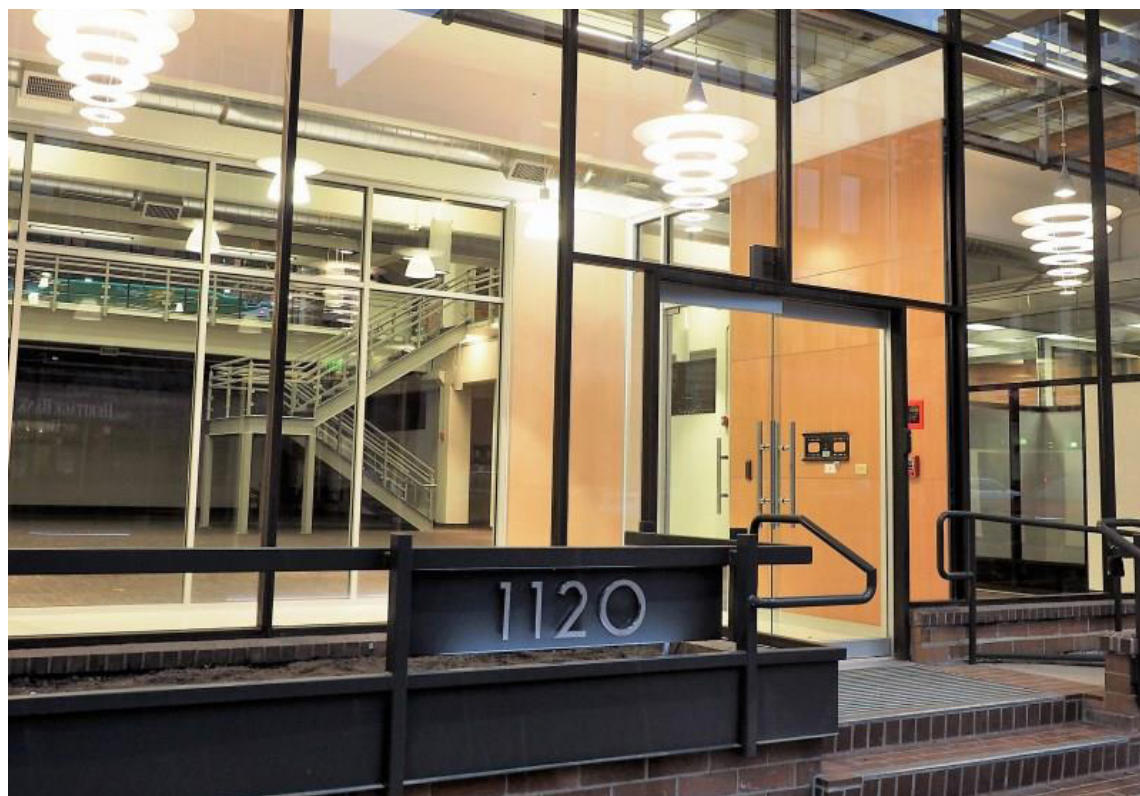
1120 Pacific Ave Tacoma, WA

## Features

.....

- Expansive Glass-line w/ private balconies
- Building Signage
- Generous concession packages
- Heart of Tacoma's Business District
- Lightrail stop behind building
- Walk score of 96!

Suite	SF	Rate
3	7,500 RSF	\$12/SF/Yr, MG



**Josh Heyum**

Principal & Broker  
425.445.5799  
joshheyum@gmail.com

**Jake Staniszewski**

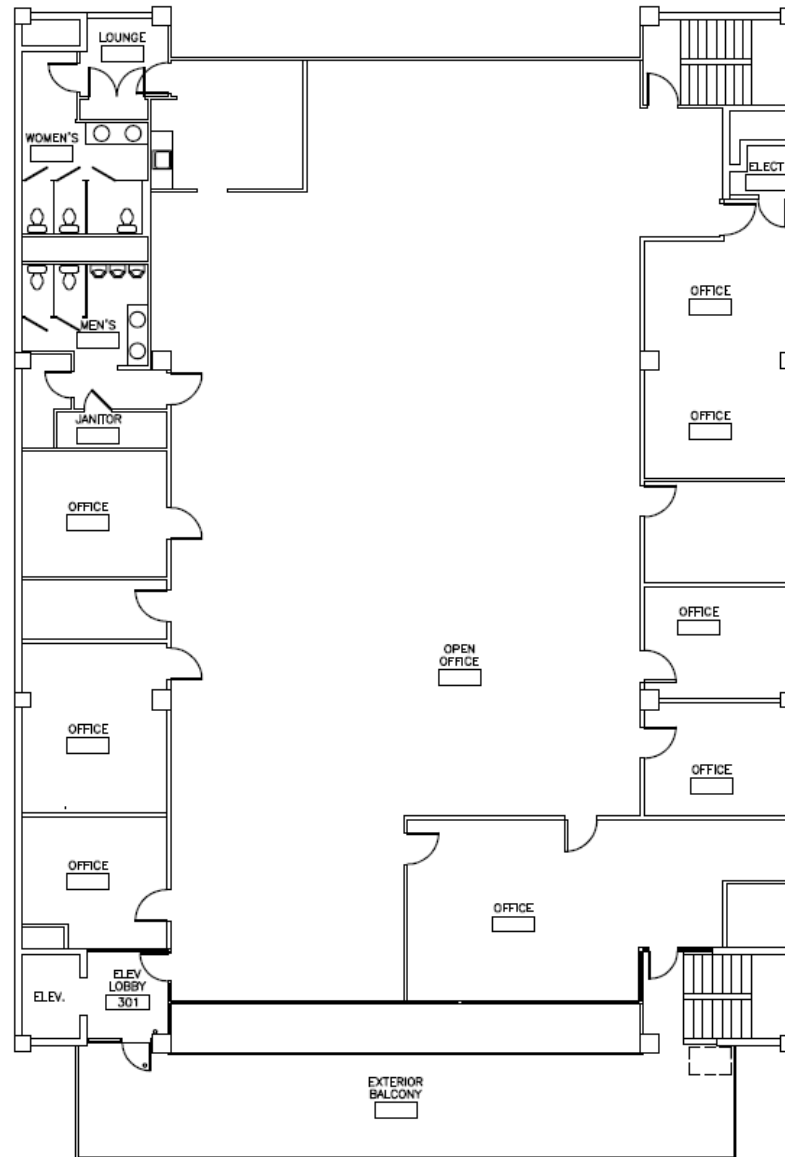
Associate & Broker  
425.284.4270 ext. 1009  
jake@vistapacificgroupinc.com

**VISTA PACIFIC GROUP**  
LEASING AND ACQUISITIONS

# 1120 Pacific

## Floor Plans

1120 Pacific Ave Tacoma, WA



PACIFIC AVENUE

**Josh Heyum**

Principal & Broker

425.445.5799

joshheyum@gmail.com

**Jake Staniszewski**

Associate & Broker

425.284.4270 ext. 1009

jake@vistapacificgroupinc.com

