

*For Sublease*

## Class A Office Sublease

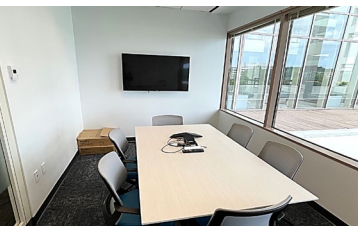
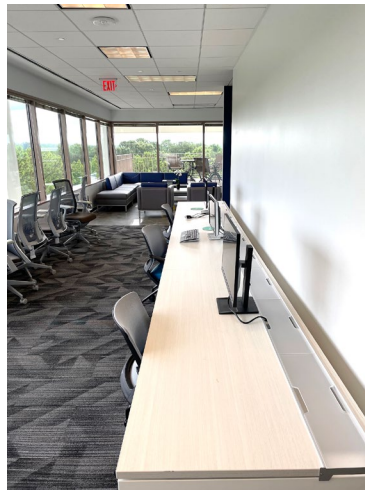


### The Space

- Class A Project with a Trophy Class A+ interior buildout
- Opportunity to sublease full space or partial

contact:

- Premises: Suite 700, 15,543 SF
  - Option A: 15,543 SF
  - Option B: 6,104 SF
- Expiration: July 31, 2027
- Asking Rate: Negotiable
- Furniture is available
- Panoramic views
- Fantastic access to I-285 AND 400



For more information, contact:

LJ Wilhelmi  
404-922-9568  
LJ.Wilhelmi@am.jll.com

Kristen Stigler  
678-896-8248  
Kristen.Stigler@am.jll.com

# North Terraces

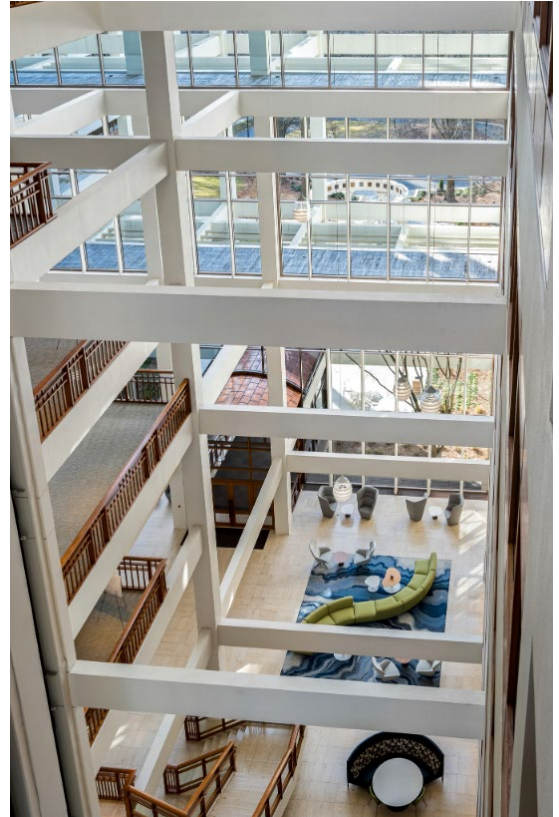
400 Perimeter Center Place



# For Sublease

## The Terraces

- The Terraces are a two-building ~550,000 SF office project located in Atlanta's Central Perimeter submarket.
- Originally constructed in 1986 and significantly renovated between 2009 and 2019, the project is one of the true Class A developments in the submarket.
- MetLife has owned the buildings since 2013 and has not only improved the common areas and exterior aesthetics, but also the buildings' core infrastructure components.
- Architecturally stimulating and well located, these buildings are a "must-tour" on every Class A office search in the Central Perimeter submarket.



For more information, contact:

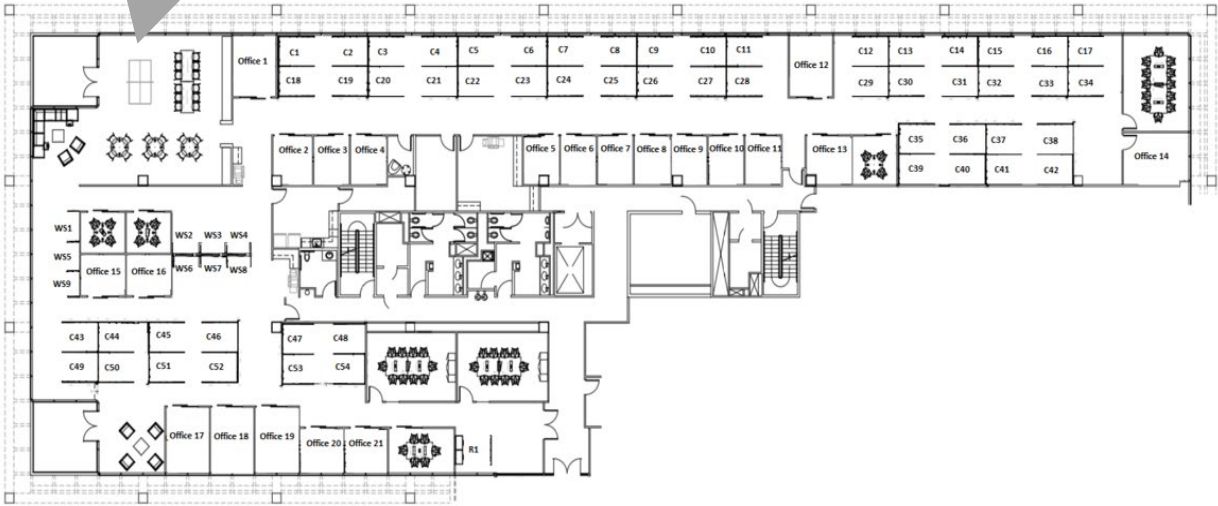
LJ Wilhelmi  
404-922-9568  
[LJ.Wilhelmi@am.jll.com](mailto:LJ.Wilhelmi@am.jll.com)

Kristen Stigler  
678-896-8248  
[Kristen.Stigler@am.jll.com](mailto:Kristen.Stigler@am.jll.com)

• Although information has been obtained from sources deemed reliable, neither Owner nor JLL makes any guarantees, warranties or representations, express or implied, as to the completeness or accuracy as to the information contained herein. Any projections, opinions, assumptions or estimates used are for example only. There may be differences between projected and actual results, and those differences may be material. The Property may be withdrawn without notice. Neither Owner nor JLL accepts any liability for any loss or damage suffered by any party resulting from reliance on this information. If the recipient of this information has signed a confidentiality agreement regarding this matter, this information is subject to the terms of that agreement. ©2019 Jones Lang LaSalle IP, Inc. All rights reserved.



## Option A - Full suite 700: 15,543 SF



## Option B – Partial suite 700: 6,104 SF

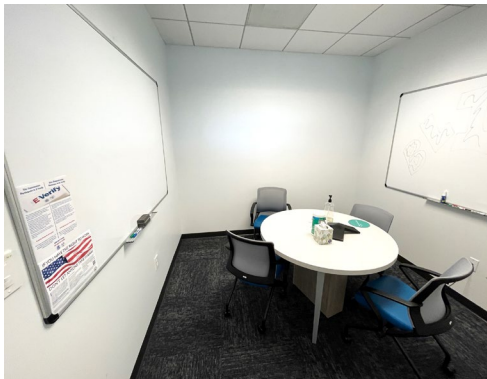
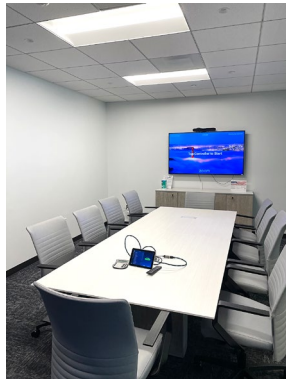
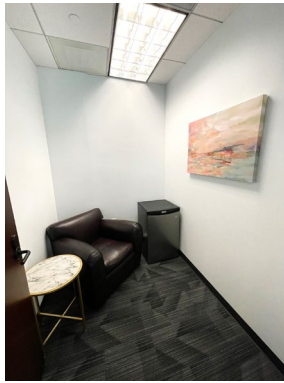


LJ Wilhelmi  
404-922-9568  
LJ.Wilhelmi@am.jll.com

Kristen Stigler  
678-896-8248  
Kristen.Stigler@am.jll.com

Although information contained herein has been obtained from sources deemed reliable, neither JLL nor any of its clients makes any guarantees or representations, express or implied, as to the completeness or accuracy of such information. Any projections, opinions, assumptions or estimates used are for example only. Neither JLL nor any of its clients accepts any liability for loss resulting from reliance on such information. There may be material differences between projected results and actual results. Any property offered for sale or lease may be withdrawn without notice. If the recipient of this information has signed a confidentiality agreement regarding this matter, this information is subject to the terms of that agreement. Copyright © 2020 Jones Lang LaSalle IP, Inc. All rights reserved.





LJ Wilhelmi  
404-922-9568  
LJ.Wilhelmi@am.jll.com

Kristen Stigler  
678-896-8248  
Kristen.Stigler@am.jll.com

Although information contained herein has been obtained from sources deemed reliable, neither JLL nor any of its clients makes any guarantees or representations, express or implied, as to the completeness or accuracy of such information. Any projections, opinions, assumptions or estimates used are for example only. Neither JLL nor any of its clients accepts any liability for loss resulting from reliance on such information. There may be material differences between projected results and actual results. Any property offered for sale or lease may be withdrawn without notice. If the recipient of this information has signed a confidentiality agreement regarding this matter, this information is subject to the terms of that agreement. Copyright © 2020 Jones Lang LaSalle IP, Inc. All rights reserved.

