

FOR SALE OR LEASE



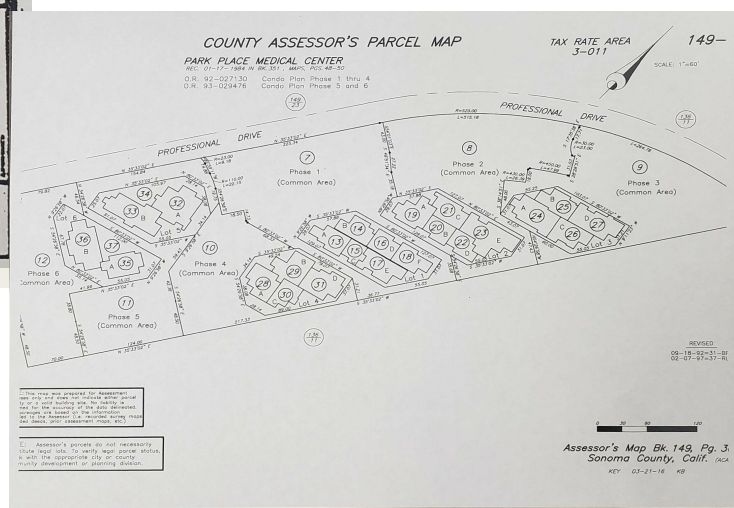
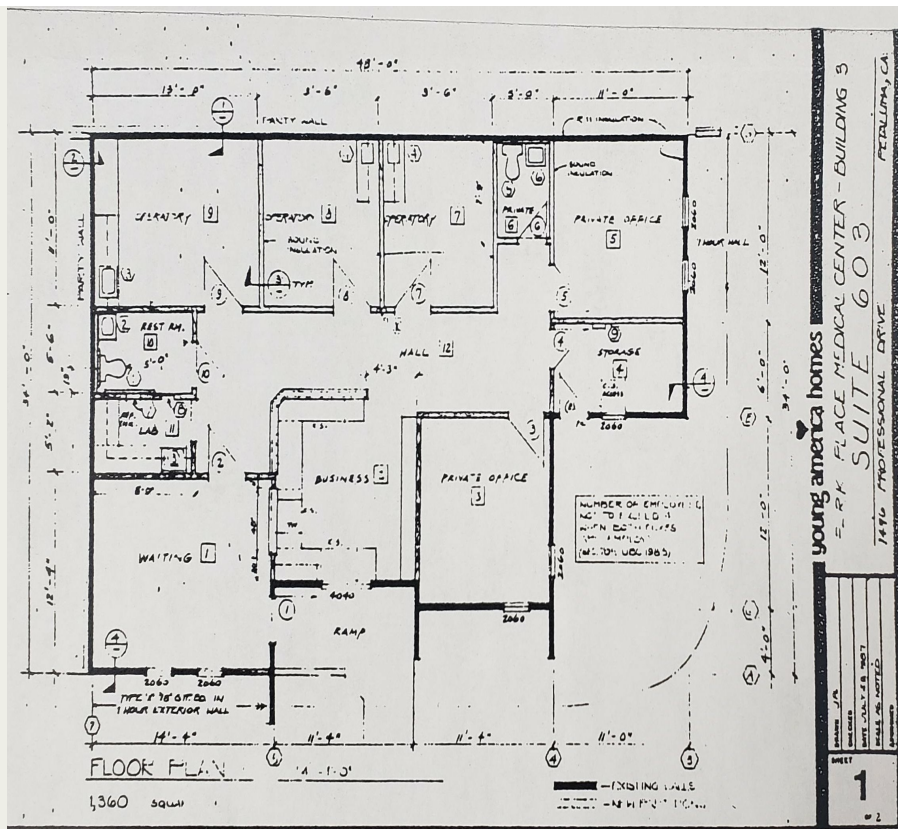
1496 Professional Drive, Suite 603, Petaluma, CA 94954

Sale \$350 psf

For Sale or Lease

Park Place Medical Condominium.
Approximately 1,360 square foot Medical office. Ground floor, waiting room, reception area, three-four exam rooms, private restroom, and private office/s.

\$3.00/psf to lease or \$350.00 psf to purchase



Bryant Moynihan
Nexus Realty Group, Inc.
Broker License B314676

707.484.2566 direct
707.769.5280 office

bryant@nexusrealty.com
office@nexusrealty.com



P.O. Box 2210 Petaluma, CA 94953