

4 Acres of Development Land

FOR SALE



2621 & 2653 Solomons Island Rd., Edgewater Maryland 21403

NRT



PROPERTY OVERVIEW

DETAILS

Among the R 1 uses are Assisted Living; educational and church related uses; offices and facilities for not-for-profit organizations; and other similar uses; **and per Bill No. 83-16, Garden Centers are now permitted.** The two existing residences are currently rented.

Less than 1/2 mile from Aris T. Allen Blvd.

Available: 4 Acres on 2 lots, each with a residence which is currently rented.

PRICE: \$1,865,000.00

ZONING: R 1

AREA DESCRIPTION: This prominent location on Solomons Island Road (Route 2) is adjacent to the prestigious Homeport Farm development and associated Park.

FOR MORE DETAILS CONTACT:

Ernestine H. "Ernie" Shineman
ernieshineman@gmail.com

Direct 410.919.2522
Fax 410.224.2258

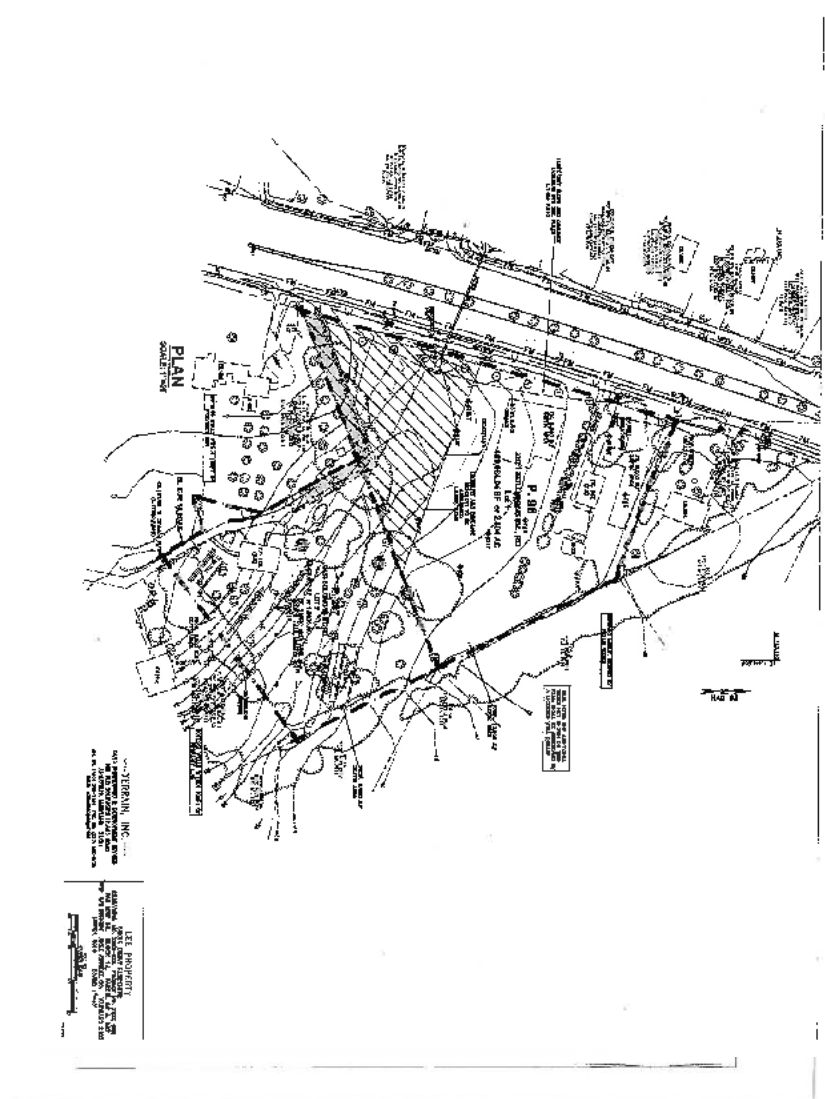
Mobile 410.570.7707
Main 410.919.2550

170 Jennifer Road, Suite 102
Annapolis, Maryland 21401



SOLOMONS ISLAND ROAD 4 ACRES

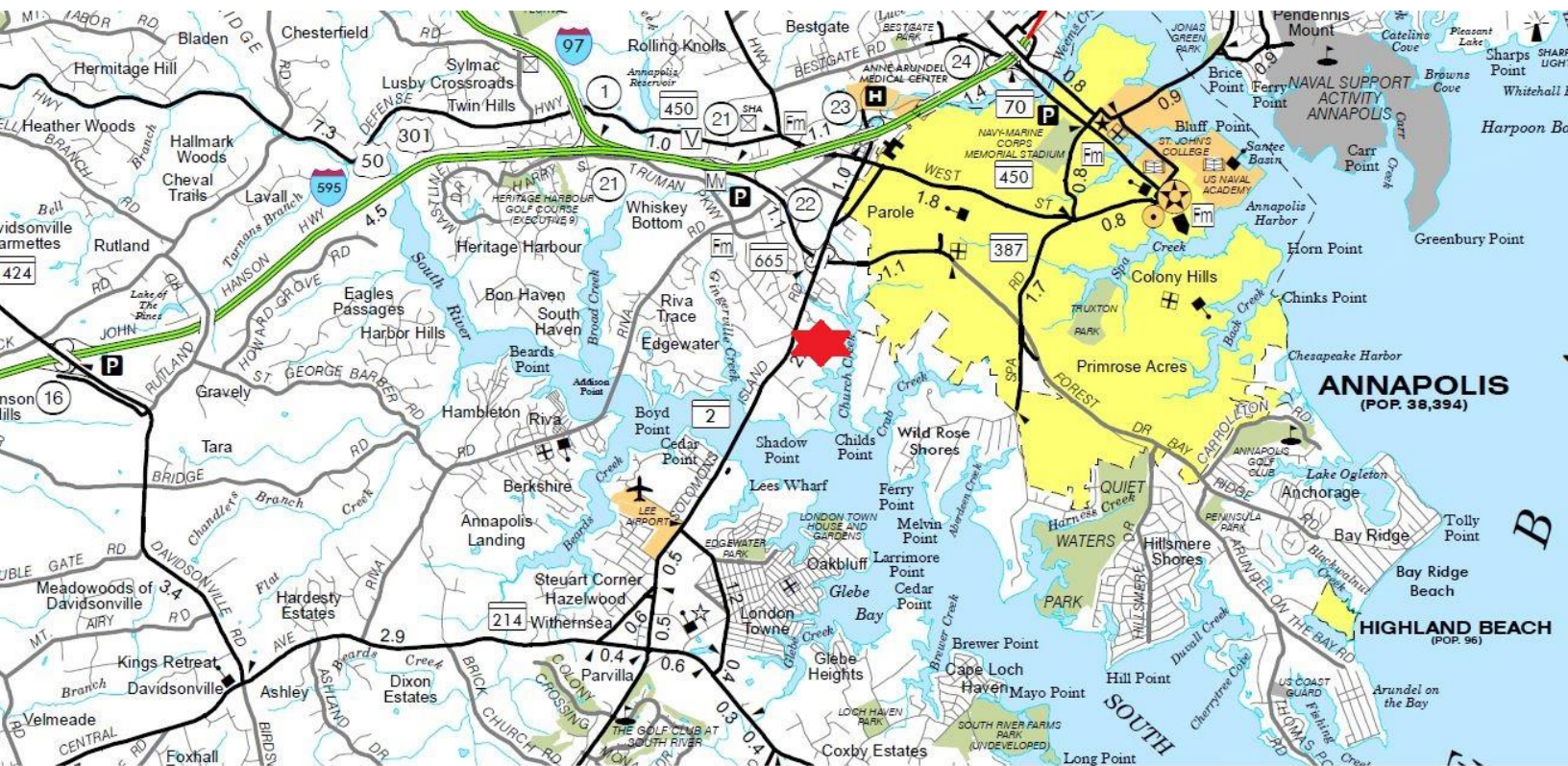
Survey of the 4 Acres showing the Two lots, each Improved with a Home which is Currently rented.



FOR MORE DETAILS CONTACT:

Ernestine H. "Ernie" Shineman ernieshineman@gmail.com	Direct 410.919.2522 Fax 410.224.2258	Mobile 410.570.7707 Main 410.919.2550	170 Jennifer Road, Suite 102 Annapolis, Maryland 21401
--	---	--	---

SOLOMONS ISLAND ROAD 4 ACRES



FOR MORE DETAILS CONTACT:

Ernestine H. "Ernie" Shineman
ernieshineman@gmail.com

Direct 410.919.2522
Fax 410.224.2258

Mobile 410.570.7707
Main 410.919.2550

170 Jennifer Road, Suite 102
Annapolis, Maryland 21401