

AVENUE

830 BRICKELL

FLAGSHIP

RETAIL | SHOWROOM

FOR LEASE



AVENUEREP.COM





PREMISES

830 BRICKELL PLAZA

GROUND LOBBY : +/- 809 SF

SECOND FLOOR : +/- 4,719 SF

TOTAL: +/- 5,528 SF

T

DELIVERY

UPON REQUEST

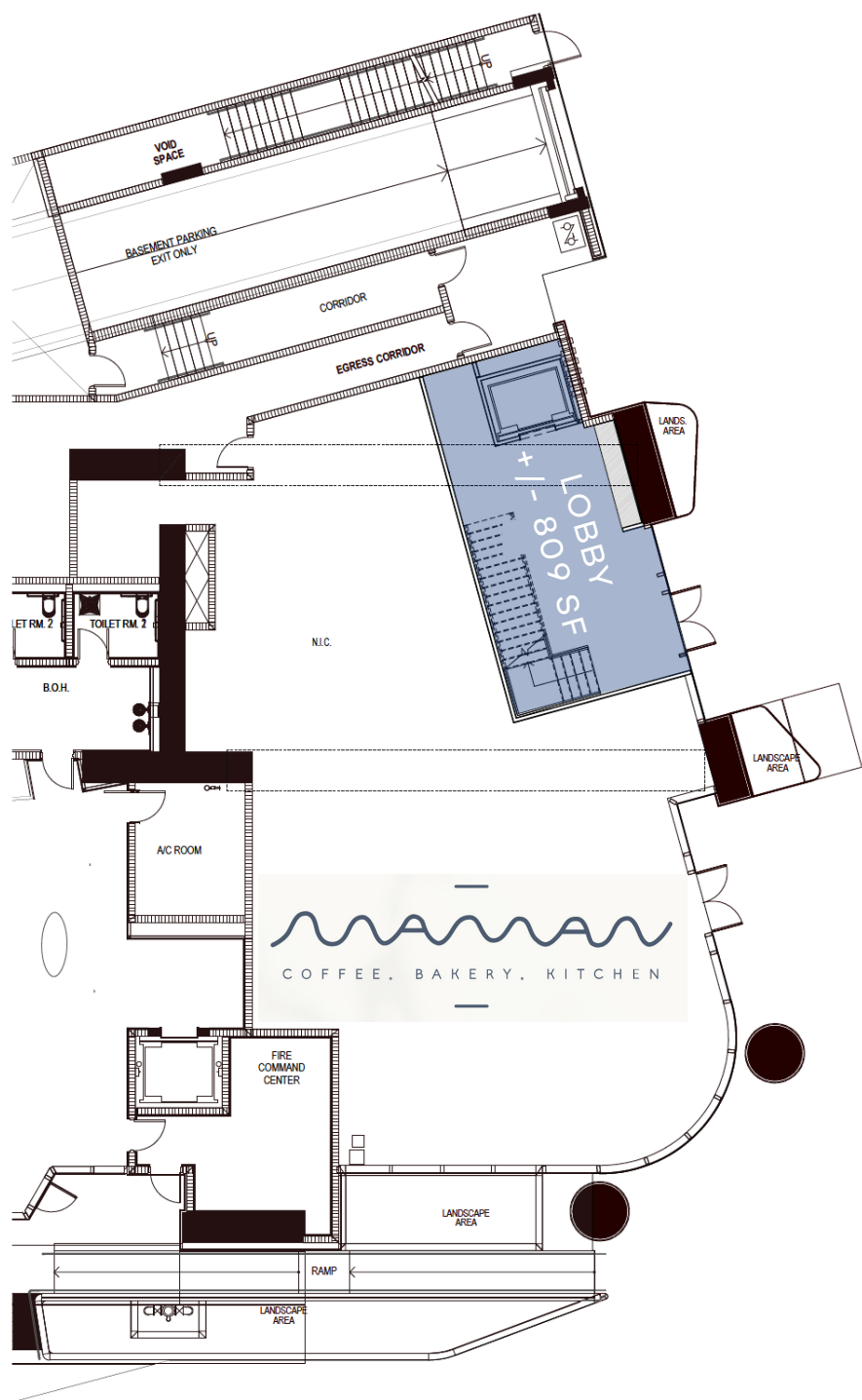
RENT

UPON REQUEST

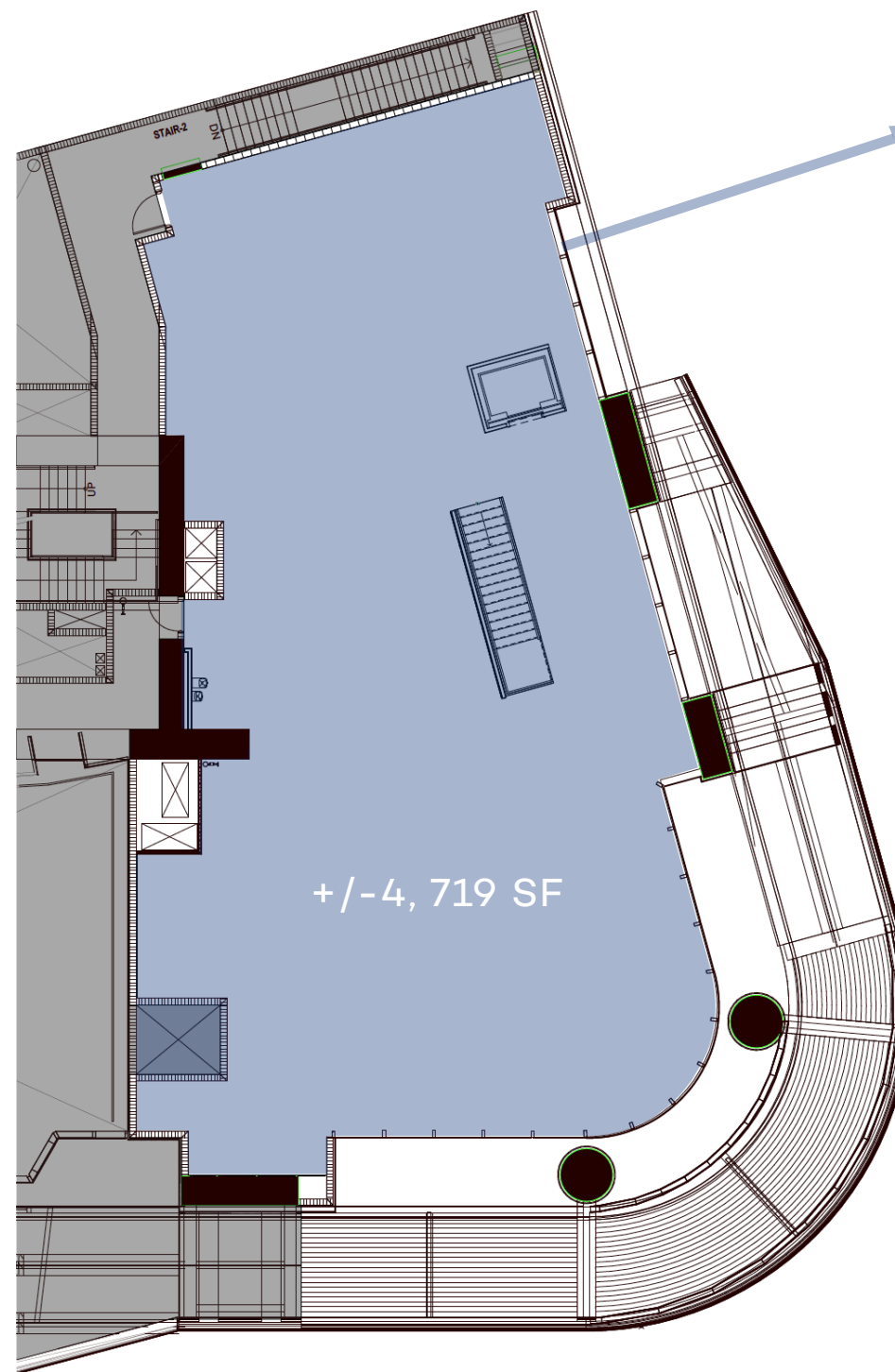
PROPERTY INFORMATION

- 830 BRICKELL, A BRAND NEW ICONIC 57 STORY CLASS A+ OFFICE BUILDING DEVELOPED BY OKO GROUP & CAIN INTERNATIONAL
- DESIGNED BY WORLD RENOWNED ADRIAN SMITH + GORDON GILL ARCHITECTURE
- LOCATED IN THE HEART OF BRICKELL ADJACENT TO WORLD CLASS RETAIL DESTINATION BRICKELL CITY CENTRE AND MARY BRICKELL VILLAGE
- IN ONE OF THE FASTEST-GROWING DESTINATIONS IN THE COUNTRY, 830 BRICKELL EXUDES THE "LIVE, WORK, PLAY" LIFESTYLE
- NEARBY TENANTS INCLUDE NORTH ITALIA, EQUINOX, SOUL CYCLE, STARBUCK'S, KOMODO, PUBELLY SUSHI, TACOLOGY, CAPITALONE 360 CAFE, PUBLIX, SHAKE SHACK, MOXIE'S, CASA TUA CUCINA, SEXY FISH

SE 9th STREET



LEVEL 01



LEVEL MEZZANINE

Across from
East Hotel /
Brickell City
Centre Entrance

SE 8th STREET

SE 1st AVE (Brickell Plaza)

FLOOR PLAN

+/- 5,528 SF



PROPOSED SECOND FLOOR OPTION (SPACE B)



- COMPLETED DEVELOPMENTS
- PROPOSED DEVELOPMENTS
- UNDER CONSTRUCTION

AERIAL

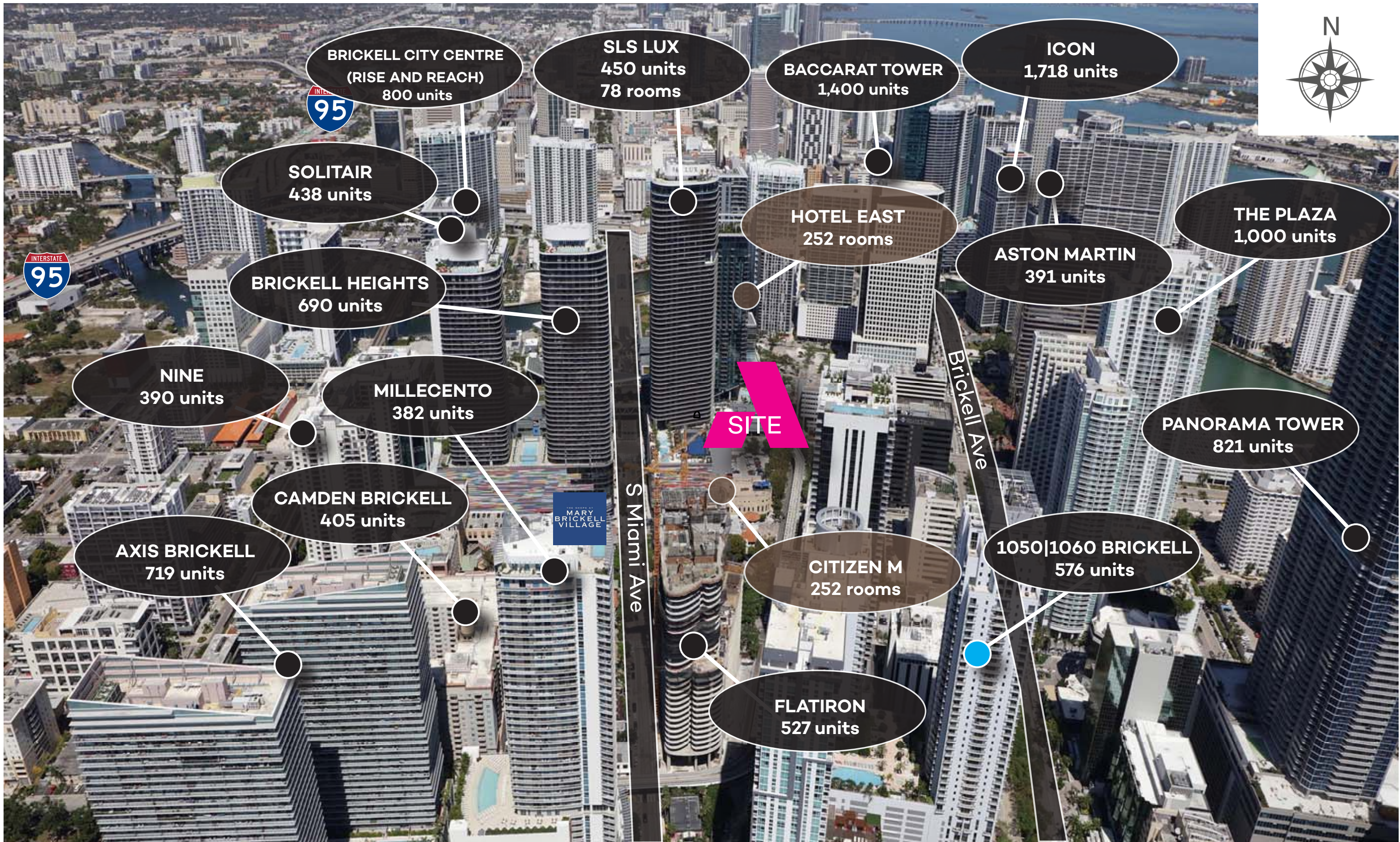


Brickell is Modern, Towering and Dense

An explosion of new build condominiums, signature offices, hotels, trendy new bars and restaurants plus the perfect weather to draw a diverse crowd of young residents, international tourists and locals alike

LOCATION





SEC S MIAMI AVE & SW 8th ST
MIAMI, FL

AERIAL VIEW NORTH



SEC S MIAMI AVE & SW 8th ST
MIAMI, FL

AERIAL VIEW SOUTH



TRADE AREA
POPULATION:

**41,339
RESIDENTS**

HOUSEHOLDS:
OVER 23,200

AVERAGE HH INCOME:
\$120,523

**OVER 6.3MM
SF OF CLASS
A/B OFFICE**

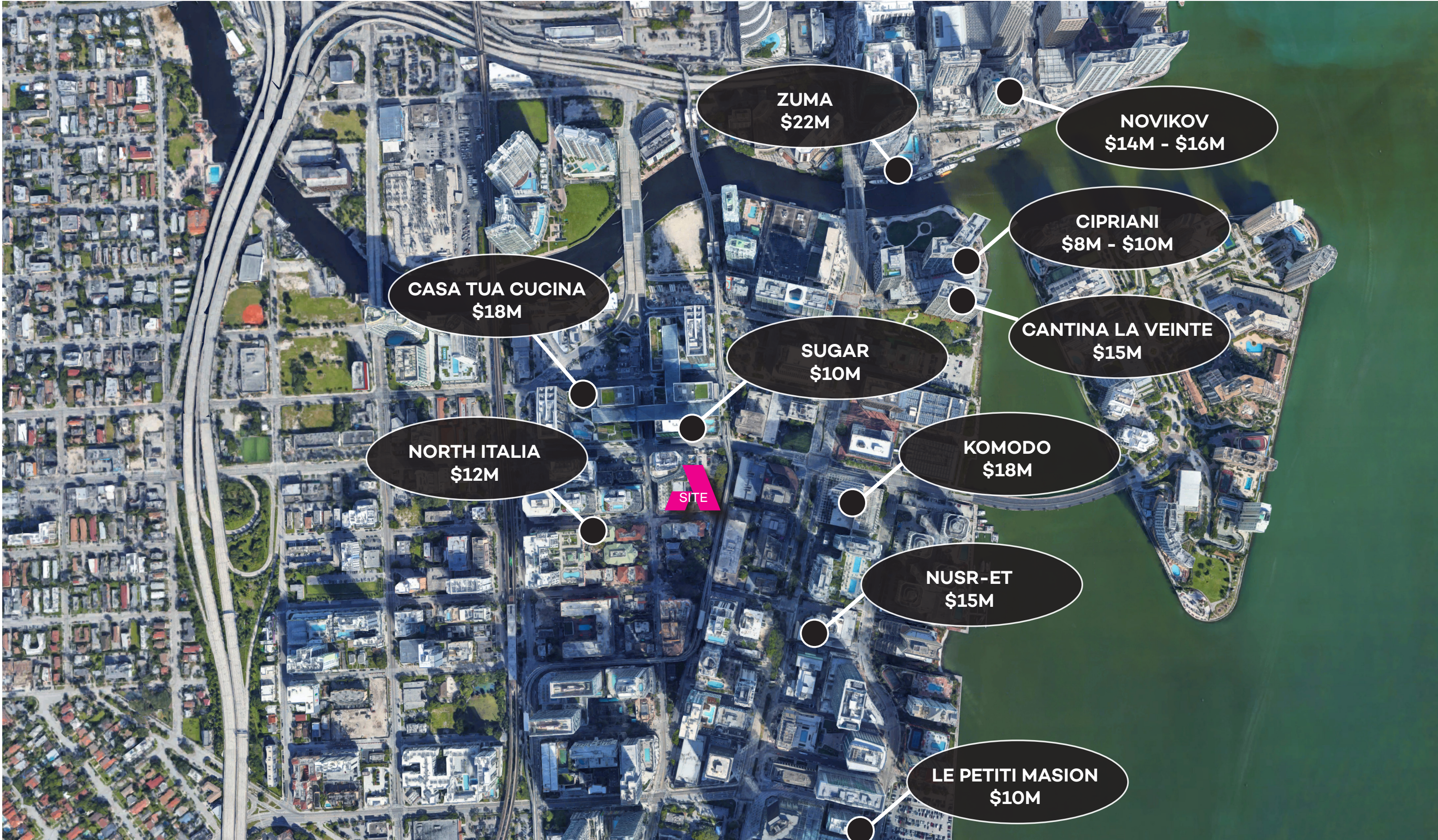
RETAIL

1.4 MM OF RETAIL
(EXISTING / UNDER
CONSTRUCTION)

HOTEL

**+/- 3,500
ROOMS**

DEMOGRAPHICS



BRICKELL SALES COMPARABLES



NEIGHBORHOOD PHOTOS

• 830 BRICKELL PLAZA
MIAMI, FL 33131



EXCLUSIVE LISTING AGENTS

Aaron J. Butler
305 397 8012
ajbutler@avenuerep.com

AVENUEREP.COM