

465 Cabot Road, South San Francisco

FOR LEASE

±18,900 Sq.Ft. Building



ANDREW PECEIMER
Senior Commercial Real Estate Advisor

DRE #00993289
M: 650.208.4971
O: 650.344.4300
apeceimer@cdbcurlingame.com



GARRETT SWARTZ
Commercial Real Estate Advisor

DRE #02178894
M: 925.222.0933
O: 650.352.3302
gswartz@cdbcurlingame.com



**COLDWELL BANKER
COMMERCIAL**
WESTBAY REAL ESTATE
GROUP

1575 Bayshore Highway, Suite 100,
Burlingame CA 94010
650.344.4300 | www.CBCBurlingame.com



BUILDING SIZE:

- ±18,900 Total Square Feet
- 2 Stories
 - Ground Floor: ±9,816 SF
 - Second Floor: ±9,156 SF
 - Divisible to 1st Floor Size



PROPERTY OVERVIEW:

- 42 Surface Parking spots
- Cold Shell - Built to Suit (BSL1-3)
- Power: 600 AMP 3 Phase
- Newly Build Construction
- Gut Line



LEASE RATE:

- Contact Agents for Details



LOCATION:

Located on Cabot Road in the heart of the Life Science community. Surrounding companies include Verily, Allogene, and Genentech. Easy access to Highway 101, Interstate 238, and South San Francisco Cal Station.



ZONING:

• BTP Zoning: Business, Technology Park, Permitted uses include incubator-research, facilities, prototype manufacturing, testing, repairing, packaging, publishing and printing as well as offices and research facilities.



ANDREW PECEIMER

Senior Commercial Real Estate Advisor
M: 650.208.4971 | DRE #00993289 | O: 650.344.4300
apeceimer@cbc Burlingame.com

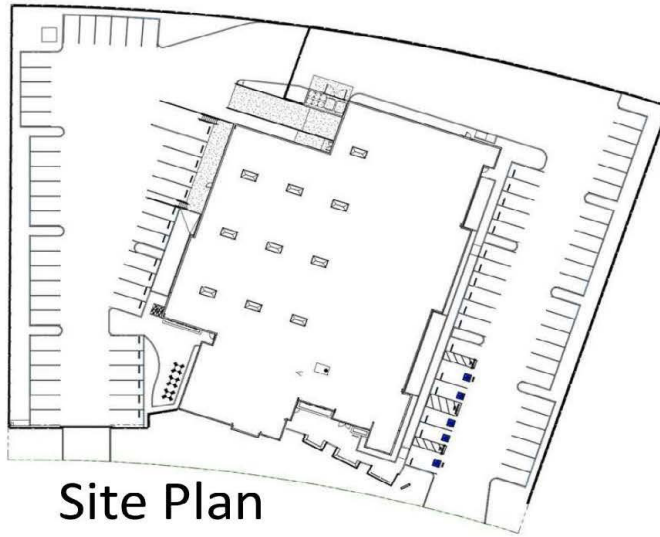
GARRETT SWARTZ

Commercial Real Estate Advisor
M: 925.222.0933 | DRE #02178894 | O: 650.352.3302
gswartz@cbc Burlingame.com



**COLDWELL BANKER
COMMERCIAL**
WESTBAY REAL ESTATE
GROUP

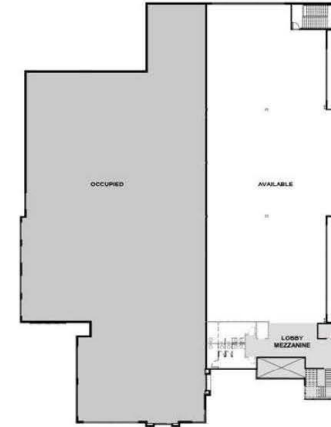
1575 Bayshore Highway, Suite 100,
Burlingame CA 94010
650.344.4300
www.CBCBurlingame.com



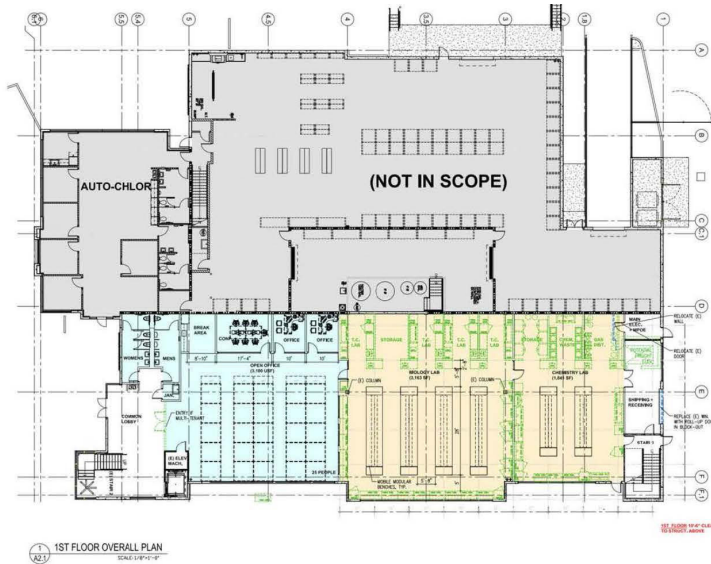
Site Plan



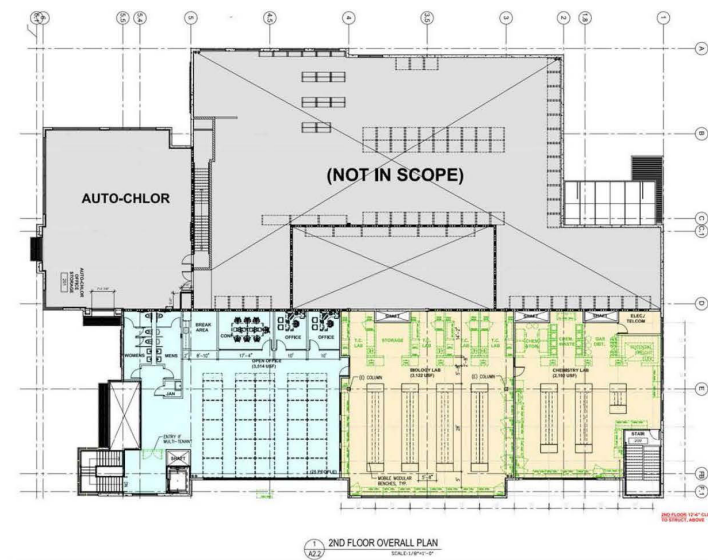
Ground Floor
+ 9,816 SF



Second Floor
+ 9,156 SF



1 1ST FLOOR OVERALL PLAN
SCALE 1/8"=1'-0"



1 2ND FLOOR OVERALL PLAN
SCALE 1/8"=1'-0"

ANDREW PECEIMER

Senior Commercial Real Estate Advisor
M: 650.208.4971 | DRE #00993289 | O: 650.344.4300
apeceimer@cbc Burlingame.com

GARRETT SWARTZ

Commercial Real Estate Advisor
M: 925.222.0933 | DRE #02178894 | O: 650.352.3302
gswartz@cbc Burlingame.com



**COLDWELL BANKER
COMMERCIAL**
WESTBAY REAL ESTATE
GROUP

1575 Bayshore Highway, Suite 100,
Burlingame CA 94010
650.344.4300
www.CBC Burlingame.com



ANDREW PECEIMER

Senior Commercial Real Estate Advisor
M: 650.208.4971 | DRE #00993289 | O: 650.344.4300
apeceimer@cbc Burlingame.com

GARRETT SWARTZ

Commercial Real Estate Advisor
M: 925.222.0933 | DRE # 02178894 | O: 650.352.3302
gswartz@cbc Burlingame.com



**COLDWELL BANKER
COMMERCIAL**
WESTBAY REAL ESTATE
GROUP

1575 Bayshore Highway, Suite 100,
Burlingame CA 94010
650.344.4300
www.CBCBurlingame.com