



Aerial view of the subject property



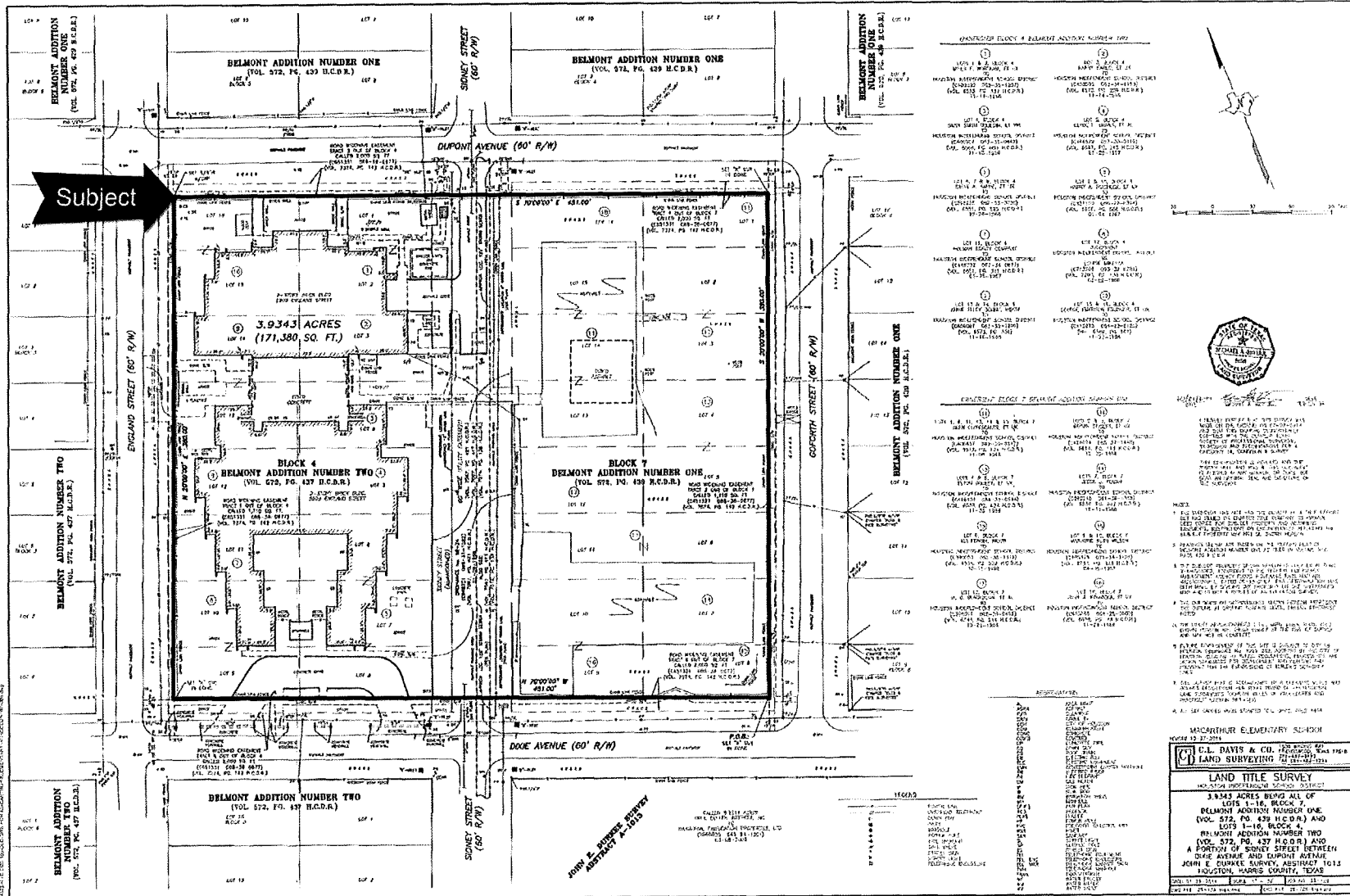
Exterior view of the subject property looking southeast across England Street



Exterior view of the southeast side of the building

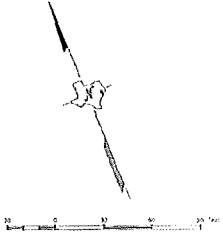


Exterior view of the building looking northeast across Dixie Drive



Subject →

- CONTINGENCY FLOOR 4 BELMONT ADDITION NUMBER ONE**
- ① LOT 1 & 2, BLOCK 4 BELMONT ADDITION NUMBER ONE (VOL. 572, PG. 439 N.C.D.R.)
 - ② LOT 3, BLOCK 4 BELMONT ADDITION NUMBER ONE (VOL. 572, PG. 439 N.C.D.R.)
 - ③ LOT 4, BLOCK 4 BELMONT ADDITION NUMBER ONE (VOL. 572, PG. 439 N.C.D.R.)
 - ④ LOT 5, BLOCK 4 BELMONT ADDITION NUMBER ONE (VOL. 572, PG. 439 N.C.D.R.)
 - ⑤ LOT 6, BLOCK 4 BELMONT ADDITION NUMBER ONE (VOL. 572, PG. 439 N.C.D.R.)
 - ⑥ LOT 7, BLOCK 4 BELMONT ADDITION NUMBER ONE (VOL. 572, PG. 439 N.C.D.R.)
 - ⑦ LOT 8, BLOCK 4 BELMONT ADDITION NUMBER ONE (VOL. 572, PG. 439 N.C.D.R.)
 - ⑧ LOT 9, BLOCK 4 BELMONT ADDITION NUMBER ONE (VOL. 572, PG. 439 N.C.D.R.)
 - ⑨ LOT 10, BLOCK 4 BELMONT ADDITION NUMBER ONE (VOL. 572, PG. 439 N.C.D.R.)
 - ⑩ LOT 11, BLOCK 4 BELMONT ADDITION NUMBER ONE (VOL. 572, PG. 439 N.C.D.R.)
 - ⑪ LOT 12, BLOCK 4 BELMONT ADDITION NUMBER ONE (VOL. 572, PG. 439 N.C.D.R.)
- CONTINGENCY FLOOR 7 BELMONT ADDITION NUMBER ONE**
- ⑫ LOT 1, BLOCK 7 BELMONT ADDITION NUMBER ONE (VOL. 572, PG. 439 N.C.D.R.)
 - ⑬ LOT 2, BLOCK 7 BELMONT ADDITION NUMBER ONE (VOL. 572, PG. 439 N.C.D.R.)
 - ⑭ LOT 3, BLOCK 7 BELMONT ADDITION NUMBER ONE (VOL. 572, PG. 439 N.C.D.R.)
 - ⑮ LOT 4, BLOCK 7 BELMONT ADDITION NUMBER ONE (VOL. 572, PG. 439 N.C.D.R.)
 - ⑯ LOT 5, BLOCK 7 BELMONT ADDITION NUMBER ONE (VOL. 572, PG. 439 N.C.D.R.)
 - ⑰ LOT 6, BLOCK 7 BELMONT ADDITION NUMBER ONE (VOL. 572, PG. 439 N.C.D.R.)
 - ⑱ LOT 7, BLOCK 7 BELMONT ADDITION NUMBER ONE (VOL. 572, PG. 439 N.C.D.R.)
 - ⑲ LOT 8, BLOCK 7 BELMONT ADDITION NUMBER ONE (VOL. 572, PG. 439 N.C.D.R.)
 - ⑳ LOT 9, BLOCK 7 BELMONT ADDITION NUMBER ONE (VOL. 572, PG. 439 N.C.D.R.)
 - ㉑ LOT 10, BLOCK 7 BELMONT ADDITION NUMBER ONE (VOL. 572, PG. 439 N.C.D.R.)
 - ㉒ LOT 11, BLOCK 7 BELMONT ADDITION NUMBER ONE (VOL. 572, PG. 439 N.C.D.R.)
 - ㉓ LOT 12, BLOCK 7 BELMONT ADDITION NUMBER ONE (VOL. 572, PG. 439 N.C.D.R.)



REMARKS:

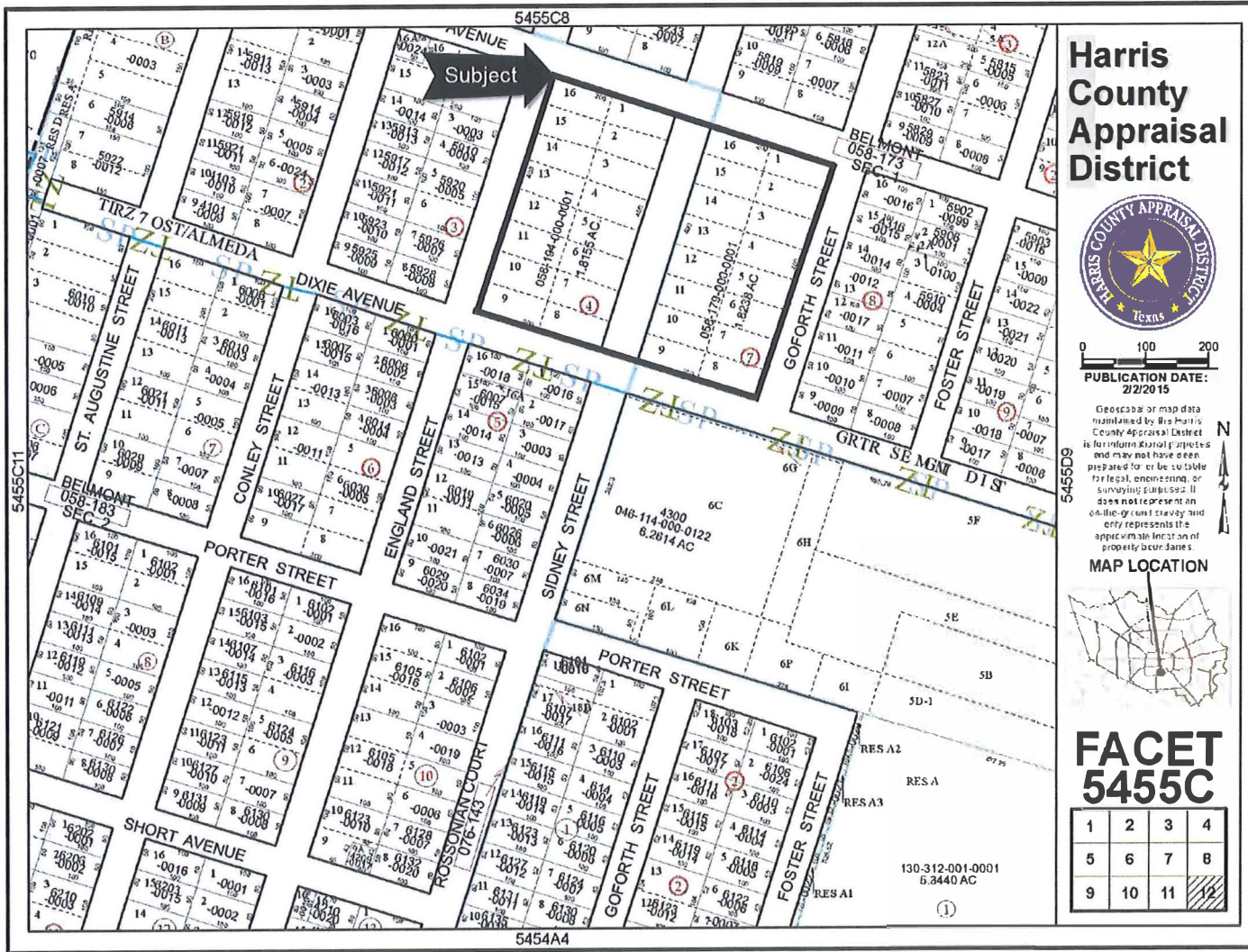
1. THIS SURVEY WAS MADE IN ACCORDANCE WITH THE PROVISIONS OF THE SURVEYING ACT OF 1903 AND THE SUPPLEMENTARY ACTS THEREON.
2. THE BOUNDARIES OF THE LOTS ARE SHOWN BY THIS SURVEY AND ARE SUBJECT TO THE RIGHTS OF THE STATE AND THE PUBLIC.
3. THE SURVEY WAS MADE BY ME OR UNDER MY CLOSE PERSONAL SUPERVISION AND TO THE BEST OF MY KNOWLEDGE AND BELIEF IT IS TRUE AND CORRECT.
4. THE SURVEY WAS MADE IN ACCORDANCE WITH THE PROVISIONS OF THE SURVEYING ACT OF 1903 AND THE SUPPLEMENTARY ACTS THEREON.
5. THE SURVEY WAS MADE BY ME OR UNDER MY CLOSE PERSONAL SUPERVISION AND TO THE BEST OF MY KNOWLEDGE AND BELIEF IT IS TRUE AND CORRECT.
6. THE SURVEY WAS MADE IN ACCORDANCE WITH THE PROVISIONS OF THE SURVEYING ACT OF 1903 AND THE SUPPLEMENTARY ACTS THEREON.
7. THE SURVEY WAS MADE BY ME OR UNDER MY CLOSE PERSONAL SUPERVISION AND TO THE BEST OF MY KNOWLEDGE AND BELIEF IT IS TRUE AND CORRECT.
8. THE SURVEY WAS MADE IN ACCORDANCE WITH THE PROVISIONS OF THE SURVEYING ACT OF 1903 AND THE SUPPLEMENTARY ACTS THEREON.
9. THE SURVEY WAS MADE BY ME OR UNDER MY CLOSE PERSONAL SUPERVISION AND TO THE BEST OF MY KNOWLEDGE AND BELIEF IT IS TRUE AND CORRECT.
10. THE SURVEY WAS MADE IN ACCORDANCE WITH THE PROVISIONS OF THE SURVEYING ACT OF 1903 AND THE SUPPLEMENTARY ACTS THEREON.
11. THE SURVEY WAS MADE BY ME OR UNDER MY CLOSE PERSONAL SUPERVISION AND TO THE BEST OF MY KNOWLEDGE AND BELIEF IT IS TRUE AND CORRECT.
12. THE SURVEY WAS MADE IN ACCORDANCE WITH THE PROVISIONS OF THE SURVEYING ACT OF 1903 AND THE SUPPLEMENTARY ACTS THEREON.
13. THE SURVEY WAS MADE BY ME OR UNDER MY CLOSE PERSONAL SUPERVISION AND TO THE BEST OF MY KNOWLEDGE AND BELIEF IT IS TRUE AND CORRECT.
14. THE SURVEY WAS MADE IN ACCORDANCE WITH THE PROVISIONS OF THE SURVEYING ACT OF 1903 AND THE SUPPLEMENTARY ACTS THEREON.
15. THE SURVEY WAS MADE BY ME OR UNDER MY CLOSE PERSONAL SUPERVISION AND TO THE BEST OF MY KNOWLEDGE AND BELIEF IT IS TRUE AND CORRECT.
16. THE SURVEY WAS MADE IN ACCORDANCE WITH THE PROVISIONS OF THE SURVEYING ACT OF 1903 AND THE SUPPLEMENTARY ACTS THEREON.
17. THE SURVEY WAS MADE BY ME OR UNDER MY CLOSE PERSONAL SUPERVISION AND TO THE BEST OF MY KNOWLEDGE AND BELIEF IT IS TRUE AND CORRECT.
18. THE SURVEY WAS MADE IN ACCORDANCE WITH THE PROVISIONS OF THE SURVEYING ACT OF 1903 AND THE SUPPLEMENTARY ACTS THEREON.
19. THE SURVEY WAS MADE BY ME OR UNDER MY CLOSE PERSONAL SUPERVISION AND TO THE BEST OF MY KNOWLEDGE AND BELIEF IT IS TRUE AND CORRECT.
20. THE SURVEY WAS MADE IN ACCORDANCE WITH THE PROVISIONS OF THE SURVEYING ACT OF 1903 AND THE SUPPLEMENTARY ACTS THEREON.
21. THE SURVEY WAS MADE BY ME OR UNDER MY CLOSE PERSONAL SUPERVISION AND TO THE BEST OF MY KNOWLEDGE AND BELIEF IT IS TRUE AND CORRECT.
22. THE SURVEY WAS MADE IN ACCORDANCE WITH THE PROVISIONS OF THE SURVEYING ACT OF 1903 AND THE SUPPLEMENTARY ACTS THEREON.
23. THE SURVEY WAS MADE BY ME OR UNDER MY CLOSE PERSONAL SUPERVISION AND TO THE BEST OF MY KNOWLEDGE AND BELIEF IT IS TRUE AND CORRECT.
24. THE SURVEY WAS MADE IN ACCORDANCE WITH THE PROVISIONS OF THE SURVEYING ACT OF 1903 AND THE SUPPLEMENTARY ACTS THEREON.
25. THE SURVEY WAS MADE BY ME OR UNDER MY CLOSE PERSONAL SUPERVISION AND TO THE BEST OF MY KNOWLEDGE AND BELIEF IT IS TRUE AND CORRECT.

MCARDER ELEMENTARY SCHOOL
 NO. 1000

D.L. DAVIS & CO., LAND SURVEYORS
 NO. 1000

LAND TITLE SURVEY
 3.9343 ACRES BEING ALL OF
 BELMONT ADDITION NUMBER ONE
 (VOL. 572, PG. 439 N.C.D.R.) AND
 LOTS 1-16, BLOCK 4,
 BELMONT ADDITION NUMBER TWO
 (VOL. 572, PG. 437 N.C.D.R.) AND
 A PORTION OF SOWNEY STREET BETWEEN
 DOUG AVENUE AND DUPONT AVENUE,
 JOHN E. CUMPAK SURVEY, ASTORIA, 1915
 HOUQUIN, MARSH, DOWNS, TOWNS

DATE: 11-13-2014
 TIME: 10:00 AM



Harris County Appraisal District



0 100 200
PUBLICATION DATE:
 2/2/2015

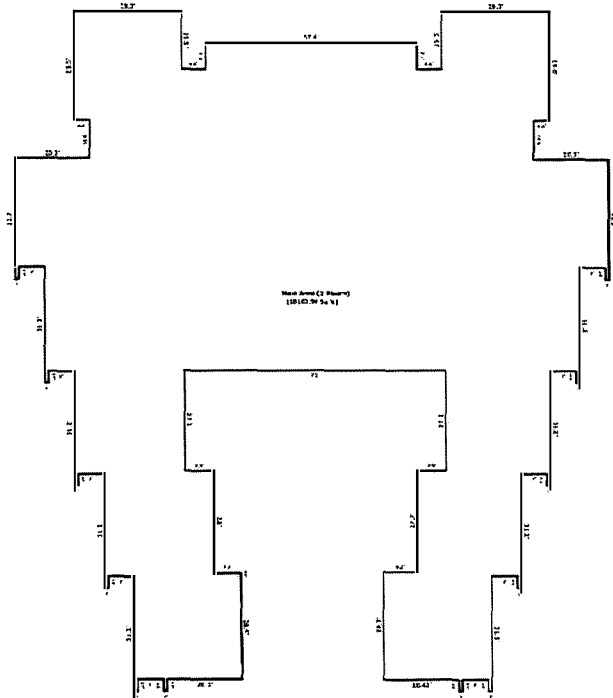
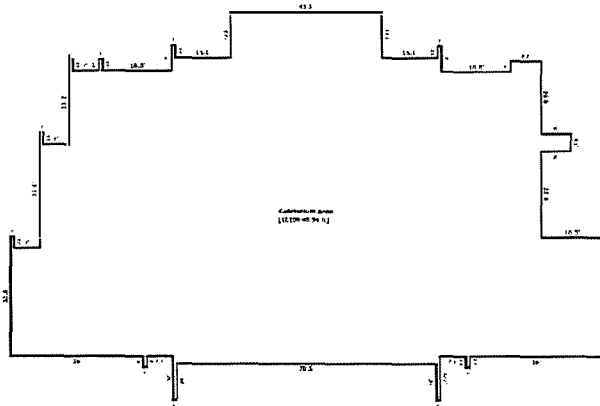
Geospatial or map data maintained by the Harris County Appraisal District is for informational purposes only and may not have been prepared for or be suitable for legal, engineering, or surveying purposes. It does not represent an official court survey and only represents the approximate location of property boundaries.

MAP LOCATION



FACET 5455C

1	2	3	4
5	6	7	8
9	10	11	12



Designed by a la mode, inc.

Area Calculations Summary

Living Area	12209.5 Sq ft
Cafetorium Area	36327.9 Sq ft
Main Area (2 Floors) (x 2)	
Total Living Area (Rounded):	48537 Sq ft

DaVinci software by a la mode, inc. 1-800-alamode

Area Calculations Summary

		Calculation Details	
Living Area			
Cafetorium Area	12209.5 Sq ft	1 x 3.1 =	3.1
		1 x 3 =	3
		1 x 3.2 =	3.2
		41.1 x 12.3 =	505.53
		4.7 x 8 =	37.6
		32.4 x 16.5 =	534.6
		1 x 3.4 =	3.4
		1 x 3.3 =	3.3
		80.5 x 8.3 =	668.15
		77.5 x 18.8 =	1457
		1 x 10 =	10
		1 x 10 =	10
		73.3 x 3.6 =	263.88
		1 x 3.1 =	3.1
		101.1 x 20.1 =	2032.11
		1 x 3.3 =	3.3
		109.1 x 28.1 =	3065.71
		1 x 3.1 =	3.1
		29.5 x 44.1 =	1300.95
		31.5 x 72.5 =	2283.75
		29.4 x 0.5 =	14.7
Main Area (2 Floors) (x 2)	36327.9 Sq ft	1 x 3.2 =	3.2
		57.4 x 7.1 =	407.54
		1 x 3.2 =	3.2
		29.3 x 15.5 =	454.15
		29.3 x 15.5 =	454.15
		1 x 3.2 =	3.2
		1 x 3.2 =	3.2
		29.43 x 28.1 =	826.903
		129.2 x 14 =	1808.8
		32.6 x 1 =	32.6
		29.4 x 7 =	205.8
		32.7 x 1 =	32.7
		29.5 x 7 =	206.5
		60.6 x 1 =	60.6
		57.4 x 7 =	401.8
		0.1 x 4.3 =	0.43
		120.6 x 10.4 =	1254.24
		60.8 x 1 =	60.8
		57.6 x 7 =	403.2
		88.6 x 1 =	88.6
		85.4 x 3.3 =	281.82
		124.9 x 57.4 =	7169.26
		29.87 x 27.3 =	815.451
		4.1 x 1 =	4.1
		0.9 x 7 =	6.3
		29.77 x 28 =	833.56
		4.1 x 1 =	4.1
		0.9 x 7 =	6.3
		28.9 x 28.97 =	837.233
		0.5 x 28.4 x 0.33 =	4.686
		24.03 x 27.3 =	656.019
		1 x 3.2 =	3.2
		0.9 x 3.7 =	3.33
		28.23 x 27.7 =	781.971
		1.2 x 37.43 =	44.916
Total Living Area (Rounded):	48537 Sq ft		