



Mottman Professional Center | Owner User Opportunity  
1625 Mottman Rd SW, Tumwater WA

Realogics | Sotheby's  
INTERNATIONAL REALTY



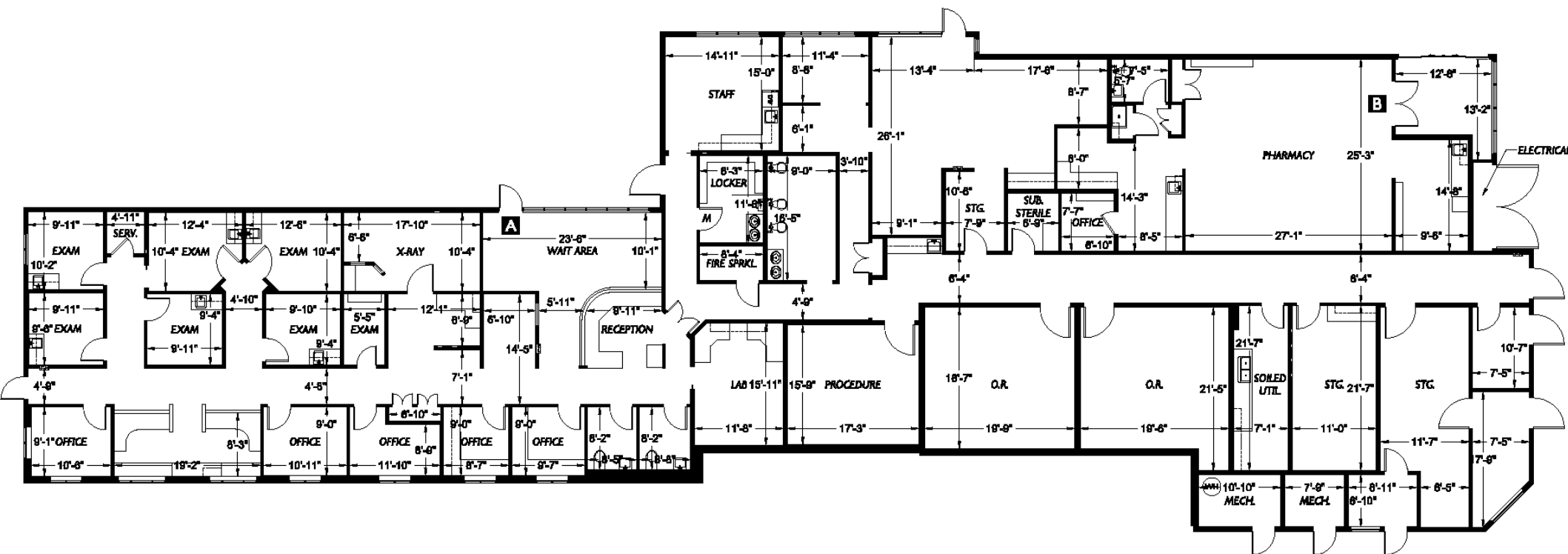


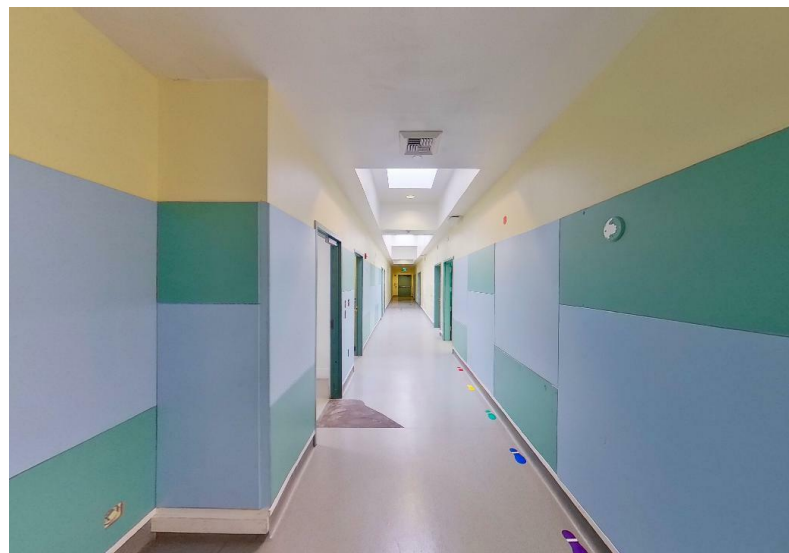
## Property Overview

### 1625 Mottman Rd SW, Tumwater WA

<b>Property:</b>	Northwest School of Innovative Learning
<b>Parcel Number:</b>	7340-46-01200, Thurston County
<b>Building Size:</b>	9,654 Square Feet
<b>Lot Size:</b>	1.48 Acres (64,400 SF)
<b>Parking:</b>	45 Parking Stalls (4.7/1,000 SF)
<b>Zoning:</b>	GC (General Commercial, Tumwater)











James Betzer  
206.605.3568  
james.betzer@rsir.com  
jamesbetzer.rsir.com

---

Realogics Sotheby's International Realty  
15 Lake St Suite #200  
Kirkland, WA 98033  
jamesbetzer.rsir.com

© 2025 Sotheby's International Realty. All Rights Reserved. Sotheby's International Realty® is a registered trademark and used with permission. Each Sotheby's International Realty office is independently owned and operated, except those operated by Sotheby's International Realty, Inc. This material is based upon information which we consider reliable but because it has been supplied by third parties, we cannot represent that it is accurate or complete and it should not be relied upon as such. All offerings are subject to errors, omissions, changes including price or withdrawal without notice. If your property is listed with a real estate broker, please disregard. It is not our intention to solicit the offerings of other real estate brokers. We are happy to work with them and cooperate fully. Equal Housing Opportunity.

Realogics | Sotheby's  
INTERNATIONAL REALTY