

**RETAIL SPACE**

# 90 BUSHWICK AVENUE

Between Powers and Grand Streets

**WILLIAMSBURG**

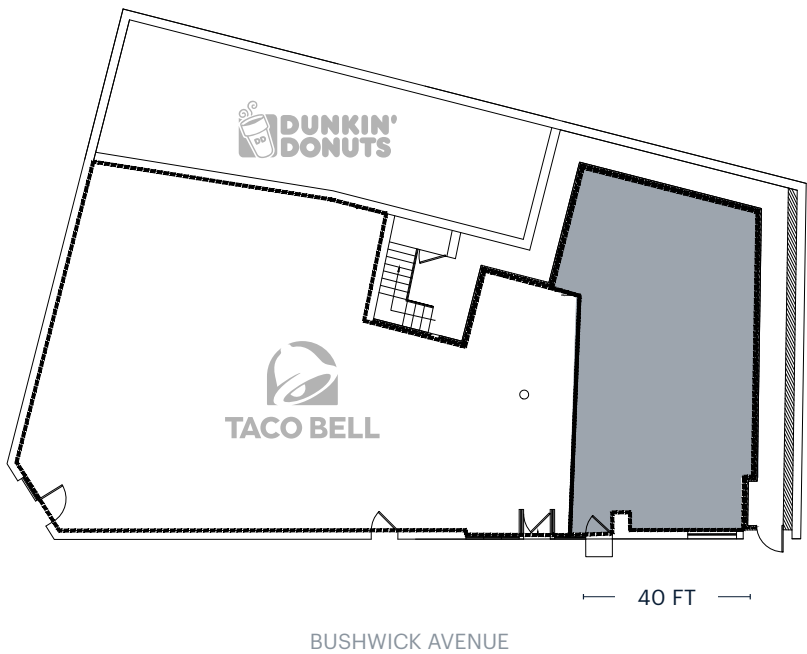
BROOKLYN | NY

**784 SF**  
For Lease



SPACE DETAILS

GROUND FLOOR



SIZE

Ground Floor	784 SF
Lower Level	825 SF

FRONTAGE

Bushwick Avenue	40 FT
-----------------	-------

TERM

Long-term lease

RENT

Upon request

NEIGHBORS

Chase Bank, Dunkin' Donuts, Subway, Masha & The Bear, 4th Down Sports Bar, T-Mobile, Lula Bean, Bread Brothers Bagel Café, Fly E-Bike Shop, Progress High School

COMMENTS

Located in the heart of Williamsburg, steps from the Grand Street L train stop  
Formally operating as St. Francis Medical & Dental Clinic  
All uses considered

TRANSPORTATION

2017 Ridership Report

Grand Street	L
Annual	2,256,349
Weekday	7,317
Weekend	7,369

AREA RETAIL



212.750.6536

+ Coming Soon