

# Retail Building Available

Freestanding Building with Drive-Thru

843 Bypass Road  
Winchester, Kentucky

NOT ACTUAL LOCATION

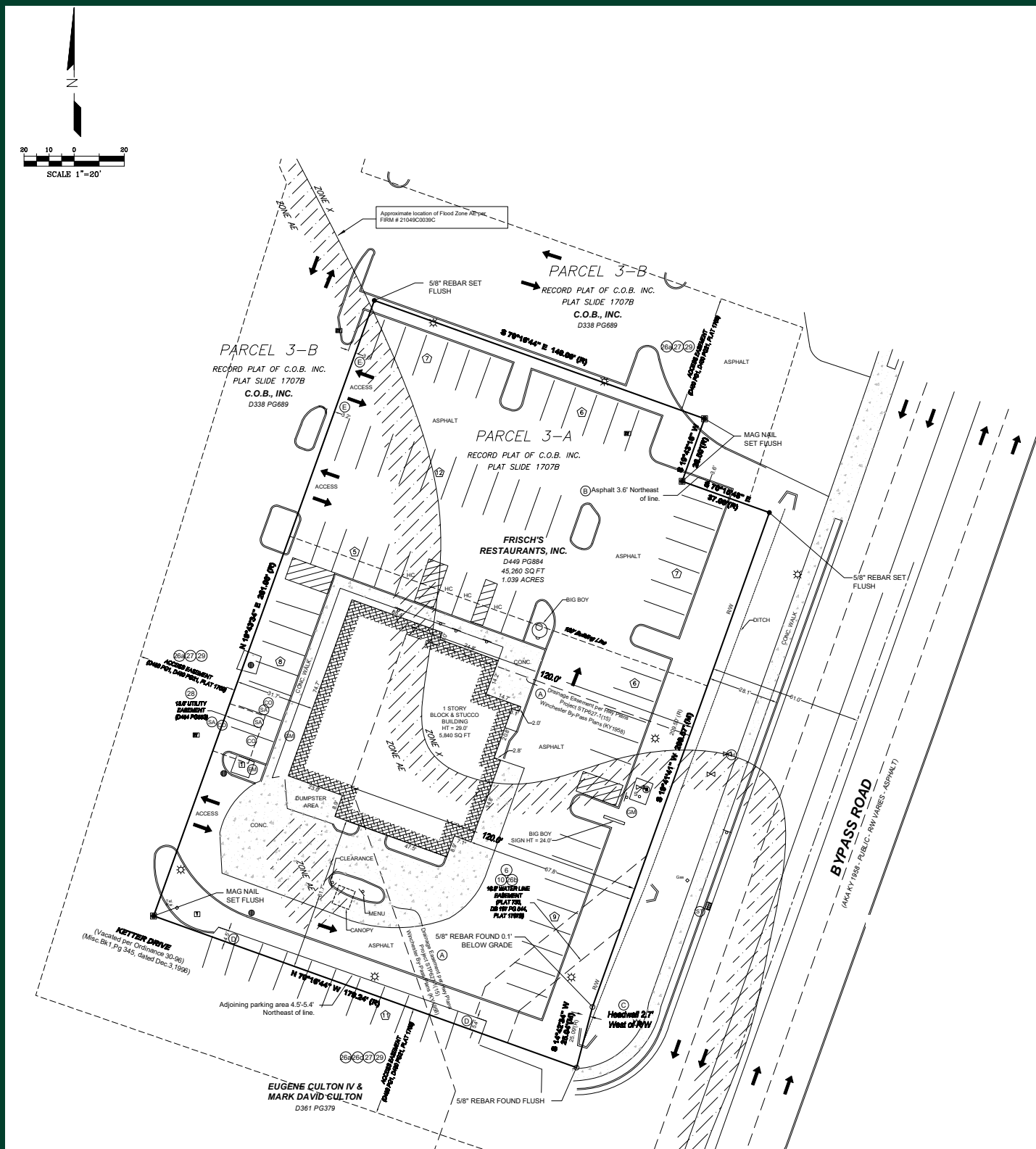


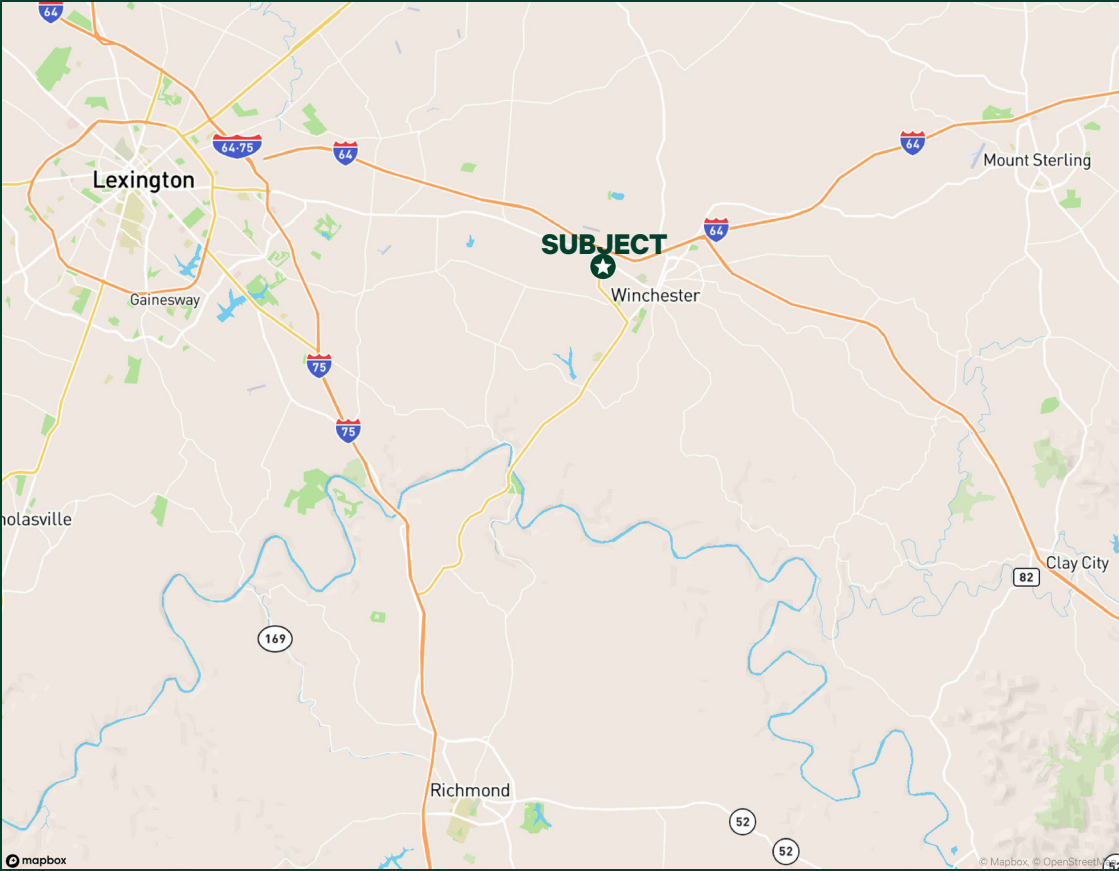
## Property Features:

- + 5,799± square foot building
- + 1.03± acres
- + Great visibility
- + Located along Bypass Road in the heart of Winchester's primary retail corridor
- + Trade area includes Kroger, Walmart, Lowe's, Rural King, TJ Maxx & Malco Theaters
- + Winchester is centrally located in Kentucky and a part of the Lexington, KY MSA
- + Bypass Road traffic count: 25,752 CPD



# Survey





2024 Estimated Demographics	1 Mile	3 Miles	5 Miles
Population	7,084	26,039	30,430
Daytime Population	8,075	28,801	31,601
Average Household Income	\$74,031	\$81,875	\$83,617

Contact Us

**Clay Hunt**  
First Vice President  
+1 502 412 7607  
clay.hunt@cbre.com

**Robert Schwartz**  
Senior Vice President  
+1 502 412 7606  
robert.schwartz@cbre.com

© 2025 CBRE, Inc. All rights reserved. This information has been obtained from sources believed reliable but has not been verified for accuracy or completeness. CBRE, Inc. makes no guarantee, representation or warranty and accepts no responsibility or liability as to the accuracy, completeness, or reliability of the information contained herein. You should conduct a careful, independent investigation of the property and verify all information. Any reliance on this information is solely at your own risk.