

SITE DATA
 LOCATION: BONITA SPRINGS, FLORIDA
 ADDRESS: BONITA BEACH ROAD & OLD US 41
 ZONING: COMMERCIAL- RESTAURANT
 TWO STORY EXISTING BUILDING
 PARKING: 16 PARKING SPACES & 1 HANDICAP

Development Services
FILE COPY

LEE COUNTY DEVELOPMENT SERVICES APPROVAL
 Date: 3/20/07
 BY: [Signature]
 FOR: MONARCAS MEXICAN RESTAURANT
 2800 OLD US 41, BONITA SPRINGS, FLORIDA
 SPECIAL PERMIT TO DEVELOP INFORMATION SUPPLIED BY APPLICANT

SITE PLAN
 SCALE: 1" = 20'

Reviewed by: AXA

A1

DATE DRAWN: 12/20/06
 DRAWN BY: GARCIA, J.S.
 PROJECT: RESTAURANT
 REVISIONS:

MONARCAS MEXICAN RESTAURANT
 OLD 41 & BONITA BEACH RD.
 BONITA SPRINGS, FLORIDA

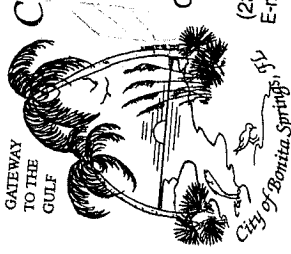
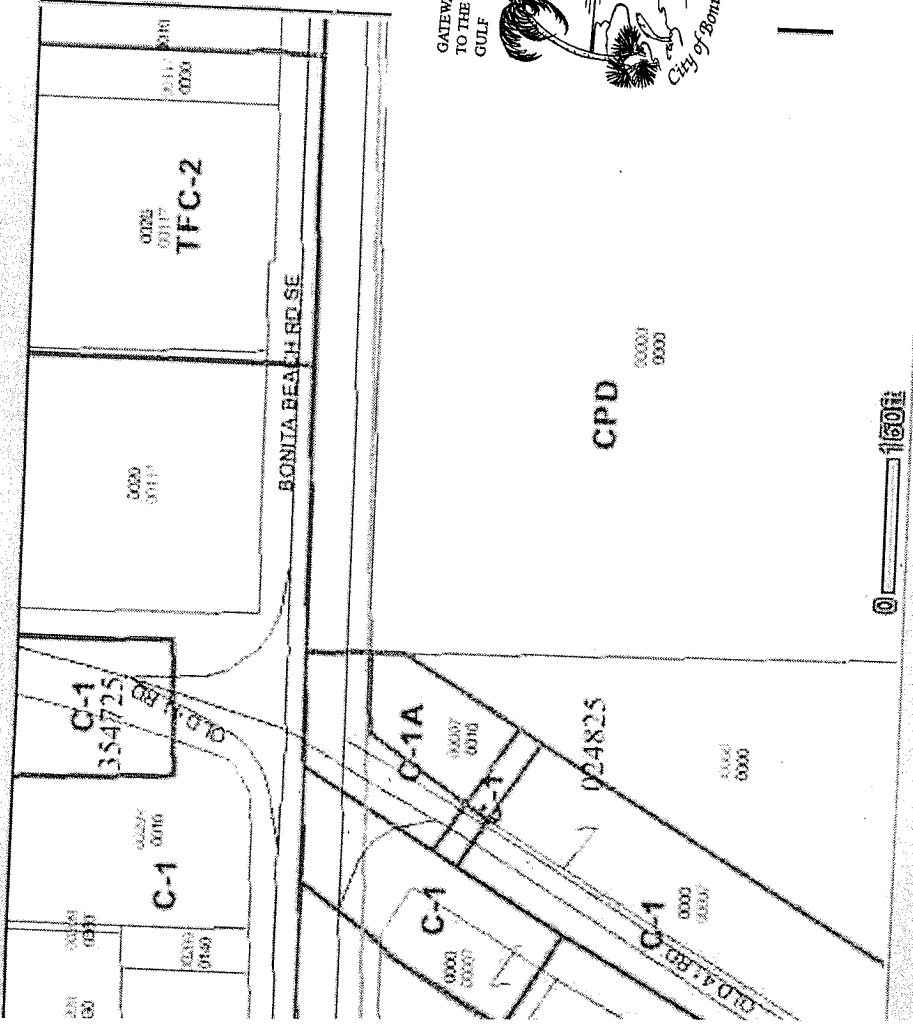
Lee County Development Services
 1000 N. 1st St., Suite 100
 Bonita Springs, FL 34134
 Phone: (813) 399-1234
 Fax: (813) 399-1235
 Website: www.lee-county.com

APPROVED BY OWNER:

[Signature]
 1.4 2nd/07

WILLIAM ZDRAVKOVIC
 2414 N. 1st St., Suite 100
 Bonita Springs, FL 34134
 Phone: (813) 399-1234
 Fax: (813) 399-1235
 Website: www.lee-county.com

[Draw | Select] Search [- Select one -] Applications [- Select -]



City of Bonita Springs
 9101 Bonita Beach Road
 Bonita Springs, FL 34135

Frank Cassidy
 Code Enforcement Supervisor

(239) 949-6257 • Fax (239) 949-6258
 E-mail: frank.cassidy@cityofbonitasprings.org
 www.cityofbonitasprings.org

0 150'



DEPARTMENT OF COMMUNITY DEVELOPMENT

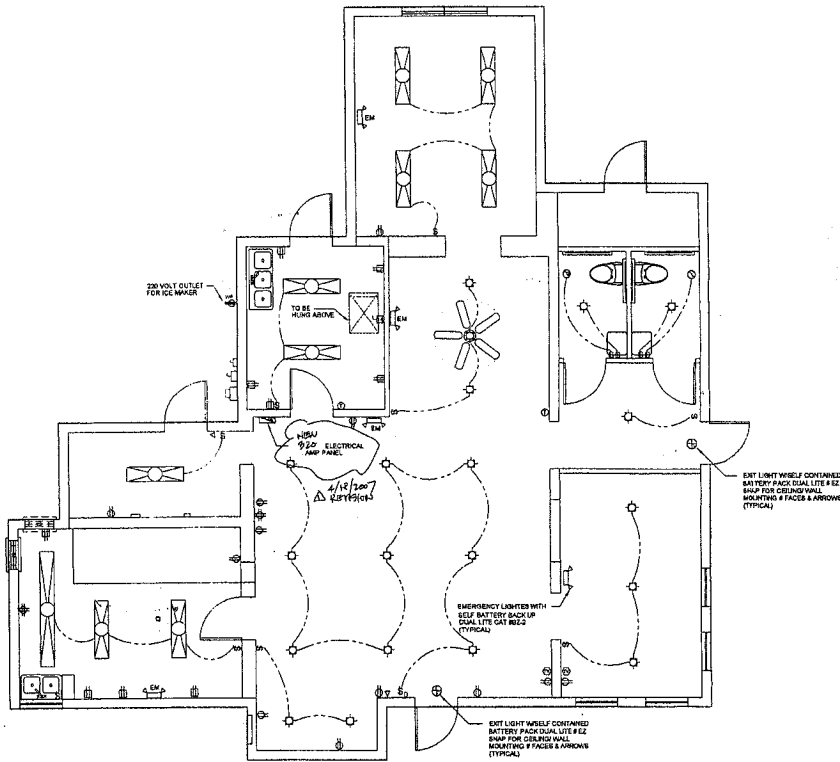
http://www.lee-county.com/dcd
 DEVELOPMENT SERVICES & PLANNING
 1500 Monroe Street, Fort Myers, FL 33901

	Phone	Fax
Development Review Information	479-8587	479-8313
Environmental Sciences	479-8585	479-8319
Permitting Information	479-8329	479-8342
Planning	479-8585	479-8319
Plan Review Information	479-8597	479-8529
Zoning Information	479-8394	479-8343
Drive-Thru	479-8334	479-8340

CODE ENFORCEMENT & BUILDING INSPECTIONS

1825 Hendry Street • Fort Myers, FL 33901

	Phone	Fax
Automated Inspections	479-8997	
Building Code Inspections	344-5801	344-5896
Certificate of Occupancy	344-5801	344-5896
Code Violations	344-5895	344-5880
Contractor Licensing	344-5895	344-5877



ELECTRICAL FLOOR PLAN
SCALE: 1/4" = 1'-0"

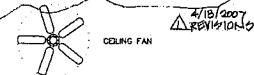
THE FOLLOWING DISCIPLINES ARE TO BE FIELD REVIEWED AND/OR FIELD INSPECTED FOR CODE COMPLIANCE.

ELECTRICAL MECHANICAL PLUMBING

APR 14 4:25-07

LOAD CALCULATIONS

A) GENERAL POWER AND LIGHTING 1,785.28 S.F. X 3.3 VOLT/AMP.....	5.17 KVA
B) 23 OUTLETS X 180 VA.....	4.1 KVA
C) AIR HANDLER HEAT.....	.24 KVA
D) WATER HEATER ETC.....	4.0 KVA
E) HU MOTOR @ 125%.....	12.3 KVA
F) WINDOW LOAD 108 S.F. X 200 VA.....	2.16 KVA
TOTAL	22.8 KVA



electrical legend

□ 120 RECEPTACLE 4T	□ REC. 1/2 PANEL CHAS
□ WATER PROOF GS RECPY	□ SMOKE DETECTOR
□ DUPLEX RECEPTACLE	□ JUNCTION BOX
□ 1/2 SWITCHED RECPY	□ DISCONNECT
□ 220 VOLT RECPY	□ TV CABLE OUTLET
□ 4 PLEX. 110V RECPY	□ MICROWAVE EQUIPMENT
□ PENDANT FIXTURE	□ DOORBELL
□ SURFACE MTD FIXTURE	□ BUZZER
□ WALL MTD FIXTURE	□ THERMISTAT (BWT)
□ SPECIALTY FIXTURE	□ TELEPHONE
□ RECESSED FIXTURE	□ SWITCH 4T AFF
□ WATER RES. REC. FIXT	□ DW SWITCH 4T AFF
□ "HEATER LIGHT"	□ PANEL
□ FLUORESCENT FIXTURE	□ ELECTRIC METER

NOTE:
ELECTRICAL CONTRACTOR SHALL PROVIDE ALL REQUIRED ELECTRIC FOR ALL OTHER SYSTEMS AS REQUIRED
VERIFY LOCATION OF AHU AND THERMOSTAT

NOTE:
THE EXISTING ELECTRICAL SYSTEM SHALL BE BROUGHT UP TO PRESENT REQUIREMENTS OF S.F.3

NOTE:
1) ANY WIRING UNDERGROUND OR SLAB WILL HAVE TO BE IN CONDUIT WITH A GROUND WIRE
2) I CERTIFY THAT TO THE BEST OF MY KNOWLEDGE THE WORK SHOWN AND DESCRIBED ON THESE DRAWINGS IS IN COMPLIANCE WITH 2004 FLORIDA FIRE PREVENTION CODE ADAPTED BY THE STATE OF FLORIDA JANUARY 2005

NOTE:
E1- EXISTING ELECTRICAL PANEL 225 AMPS
E2- EXISTING ELECTRICAL PANEL 150 AMPS

ALL PANELS SHALL BE INSTALLED ON PLYWOOD BACKBOARDS
240V TIMECLOCK SHALL CONTROL THE FOLLOWING:
- STOVE/GRILL/BROILER
- SHOW WINDOW LIGHTING
- ENTRY LIGHTING
PANEL PHASE LOADS MUST BE BALANCED TO WITHIN 10% OF EACH OTHER.
PROVIDE A MAIN DISCONNECT MEANS WITHIN THE LEASED SPACE.

NOTES:
ALL 120 VOLT PLUGS IN KITCHEN AREA MUST BE GFCI PROTECTED

4/18/07 REVISION

PANEL SCHEDULE

DESCRIPTION	WIRE	CYCL	TRIP	KVA
OUTLETS #12 01	20	0.9		
OUTLETS #12 02	20	0.9		
OUTLETS #12 03	20	0.9		
OUTLETS #12 04	20	0.9		
OUTLETS #12 05	20	0.9		
OUTLETS #12 06	20	0.9		
OUTLETS #12 07	20	0.9		
OUTLETS #12 08	20	0.9		
OUTLETS #12 09	20	0.9		
OUTLETS #12 10	20	0.9		
OUTLETS #12 11	20	0.9		
OUTLETS #12 12	20	0.9		
OUTLETS #12 13	20	0.9		
OUTLETS #12 14	20	0.9		
OUTLETS #12 15	20	0.9		
OUTLETS #12 16	20	0.9		
OUTLETS #12 17	20	0.9		
OUTLETS #12 18	20	0.9		
OUTLETS #12 19	20	0.9		
OUTLETS #12 20	20	0.9		
OUTLETS #12 21	20	0.9		
OUTLETS #12 22	20	0.9		
OUTLETS #12 23	20	0.9		
LIGHTS #12 L1	20	0.9		
LIGHTS #12 L2	20	0.9		
LIGHTS #12 L3	20	0.9		
LIGHTS #12 L4	20	0.9		
LIGHTS #12 L5	20	0.9		
LIGHTS #12 L6	20	0.9		
LIGHTS #12 L7	20	0.9		
LIGHTS #12 L8	20	0.9		
LIGHTS #12 L9	20	0.9		
LIGHTS #12 L10	20	0.9		
LIGHTS #12 L11	20	0.9		
LIGHTS #12 L12	20	0.9		
LIGHTS #12 L13	20	0.9		
LIGHTS #12 L14	20	0.9		
LIGHTS #12 L15	20	0.9		
LIGHTS #12 L16	20	0.9		
LIGHTS #12 L17	20	0.9		
LIGHTS #12 L18	20	0.9		
LIGHTS #12 L19	20	0.9		
LIGHTS #12 L20	20	0.9		
LIGHTS #12 L21	20	0.9		
LIGHTS #12 L22	20	0.9		
LIGHTS #12 L23	20	0.9		
LIGHTS #12 L24	20	0.9		
LIGHTS #12 L25	20	0.9		
LIGHTS #12 L26	20	0.9		
LIGHTS #12 L27	20	0.9		
LIGHTS #12 L28	20	0.9		
LIGHTS #12 L29	20	0.9		
AHU#1 #4	20	8.0		
AHU#2 #5	20	8.0		
AHU#3 #6	20	8.0		
WATER HEAT #10	WHD	26	4.0	
AHU#3 #9	20	8.0		
TOTAL	65.8 KVA	274.75 AMPS	340	

Proposed Panel - 320 AMP

4/18/07 REVISION

DATE DRAWN: 04/05/07
DRAWN BY: CADENA, ABE
PROJECT: RESTAURANT
REVISIONS: 1/1/07

MONARCAS MEXICAN RESTAURANT
CLD 041 & BONITA BEACH RD.
BONITA SPRINGS, FLORIDA

DATE: 04/11/07
DRAWN BY: CADENA, ABE
PROJECT: RESTAURANT
REVISIONS: 1/1/07

APPROVED BY OWNER

WILLIAM I ZDRAVAKOVIC

WILLIAM I ZDRAVAKOVIC
ELECTRICAL ENGINEER
11111 S.W. 15th Avenue, Suite 100
Miami, Florida 33185
Phone: 305-554-1111
Fax: 305-554-1112
www.wizdrav.com

