



OVIEDO OFFICE  
PARK

# FOR LEASE

## 2,618 SF MEDICAL OFFICE



Ideal Medical Office Condo For Your Practice

7560 RED BUG LAKE RD. OVIEDO, FL 32785







## PROPERTY DETAILS

<b>Suite 2048:</b>	<b>±2,618 Sf   Call For Rate</b>
<b>Type:</b>	<b>Medical Office</b>
<b>Building Class:</b>	<b>A</b>
<b>Stories:</b>	<b>2</b>
<b>Year Built:</b>	<b>2008</b>
<b>Parking Spaces:</b>	<b>5/1,000</b>
<b>Parcel ID:</b>	<b>20-21-31-506-0000-2048</b>
<b>Signage:</b>	<b>Monument/Directory</b>

## HIGHLIGHTS

- Turn-key medical/professional office space
- Class A space in the Oviedo Office Park building
- Prominent First Floor Suite with Featured Double Door Entrance
- Monument signage available
- Advent Health and Oviedo Hospital withing 1-2 miles, abundant parking
- Great access from SR- 417, 434, 426 and 436.

## PROPERTY OVERVIEW

Look no further and imagine finding your ideal space designed with the future of healthcare in mind. Nestled in the heart of Oviedo and located within 1 mile of Advent Health's ER and 2 miles from the state-of-the-art Oviedo Hospital is a unique opportunity for Class A medical/professional office space. This current medical office condominium offers an abundance of nearby amenities for healthcare companies seeking convenience, accessibility, visibility, and turn-key space. Whether you are a group expanding your company, a solo practitioner or an investor seeking a great asset in an established healthcare market, this condominium offers versatility at a prestigious location. From the moment you enter the double door entry off the lobby you are exposed to collaborative workspace with an inviting lobby, offices, exam, and procedure rooms allowing you to focus on delivering world class care to your clients.



**Natalee Gleiter**  
**407.601.1466**  
 Natalee@4acre.com



**Nicholas Fouraker, CCIM**  
**407.601.1466**  
 nick@4acre.com



# Exterior Photos

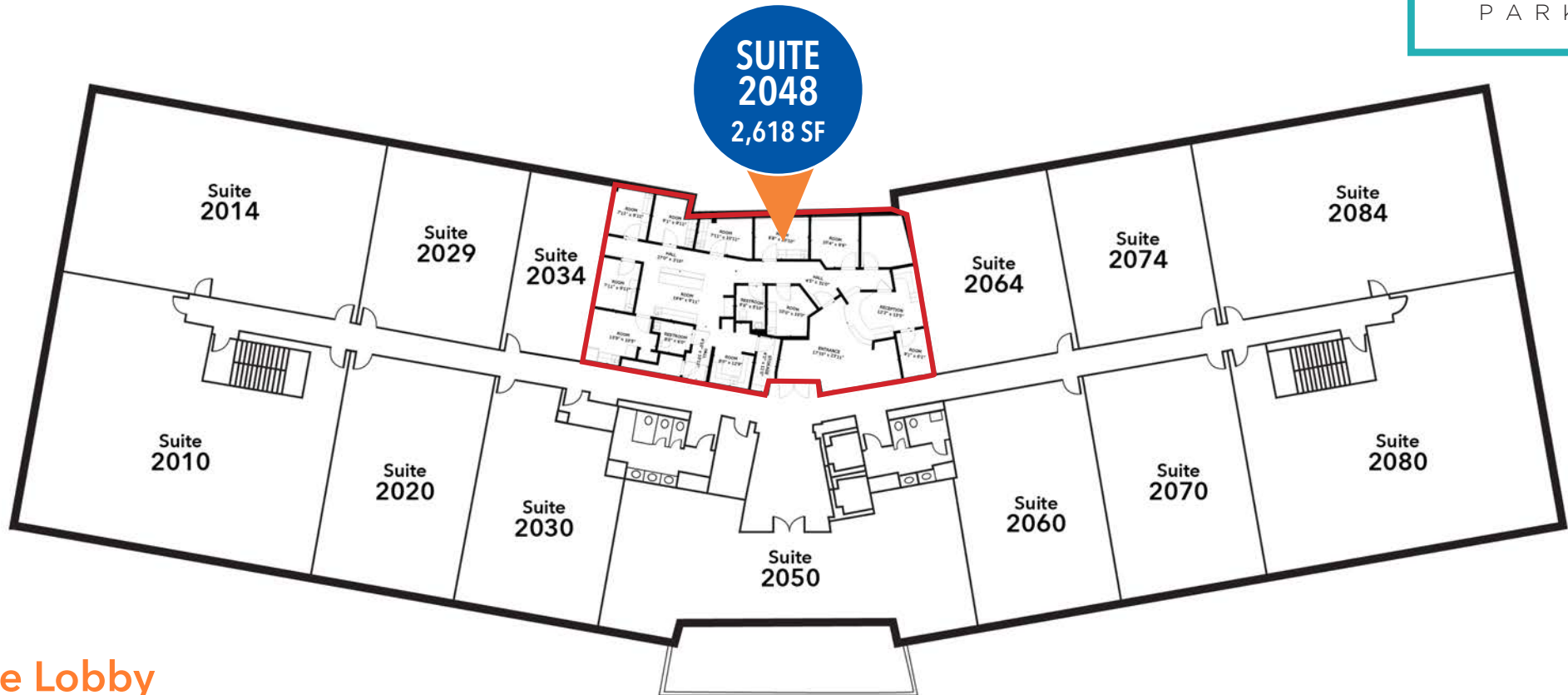


THE  
SPACE  
2,618 SF

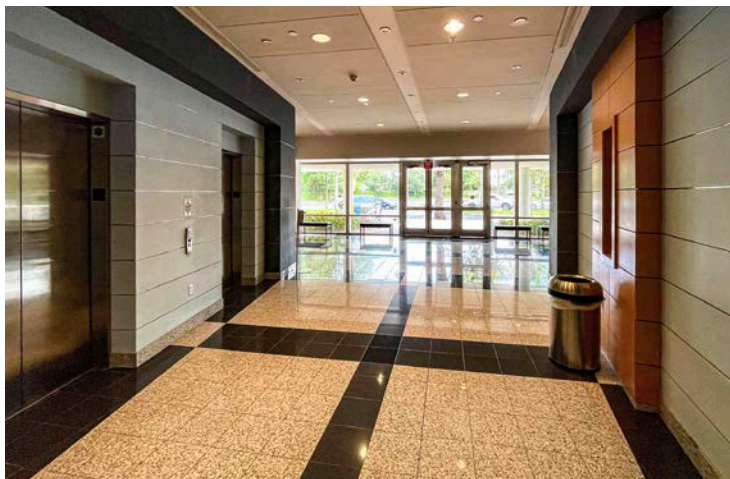




# Building Plan | 2nd Floor



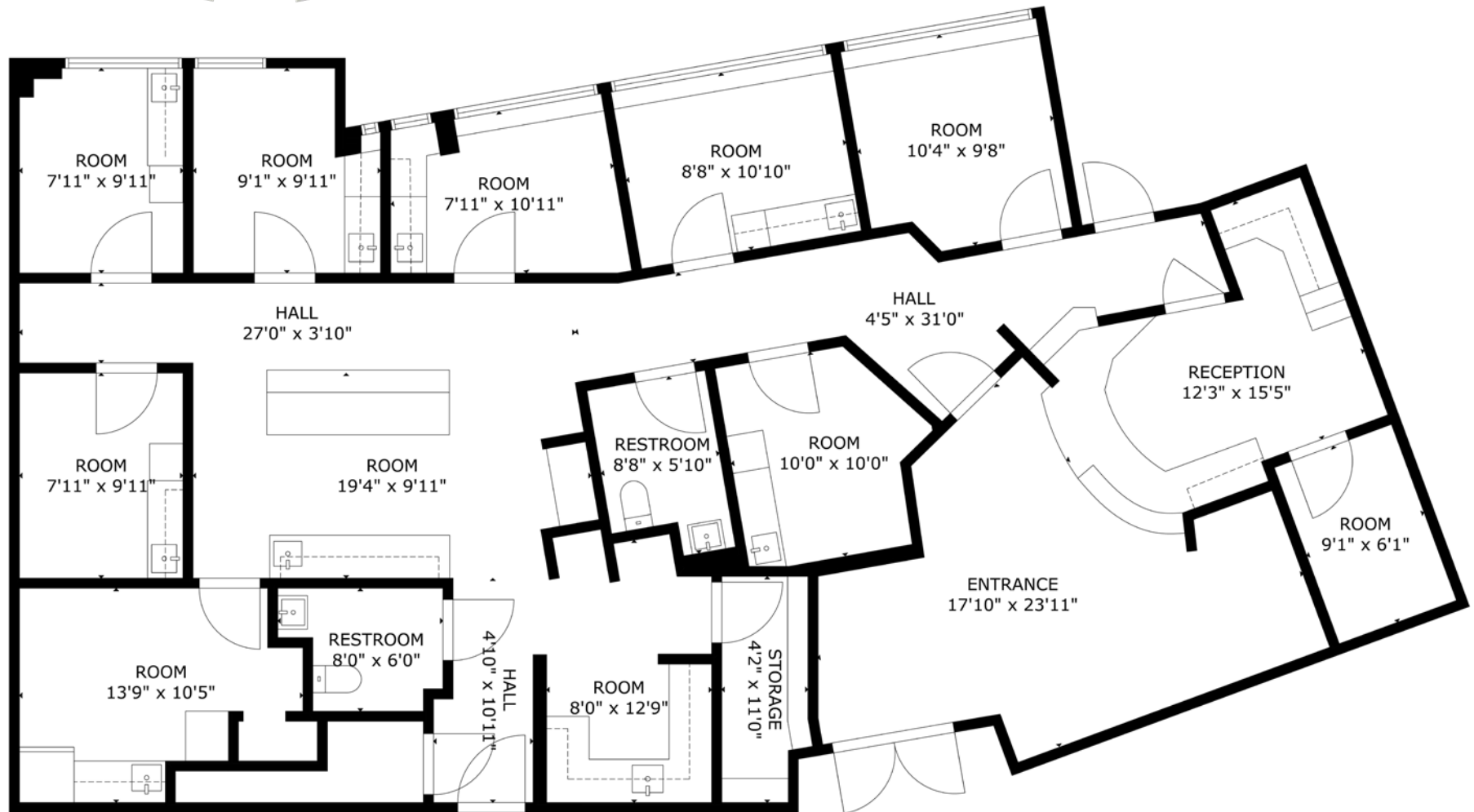
The Lobby



Main Entrance



# SUITE 2048 | 2,618 SF



# Suite 2048 Interiors





# Proximity to Healthcare Facilities



OVIEDO OFFICE  
PARK

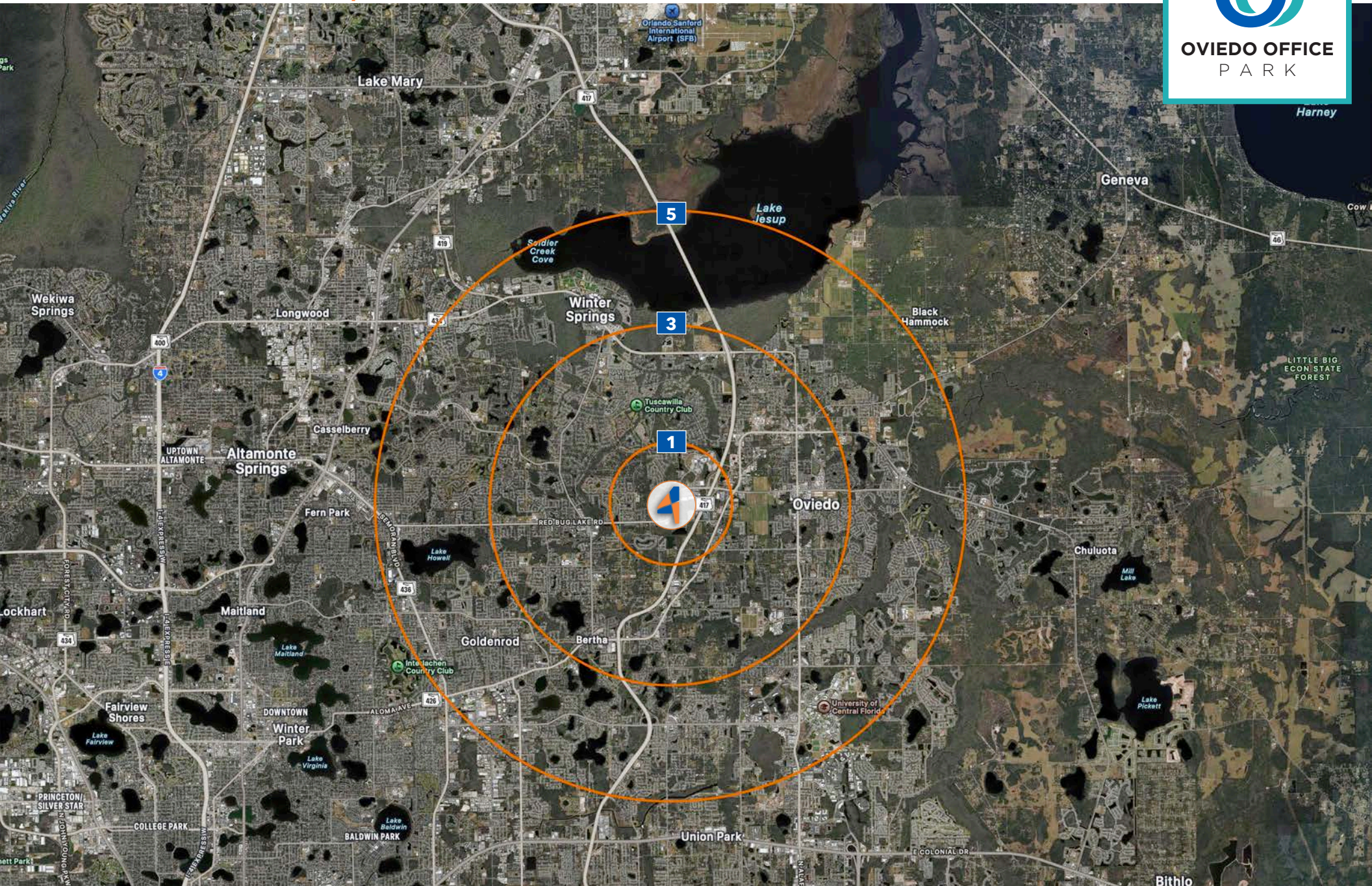




# Location Map



**OVIEDO OFFICE**  
PARK







**Natalee Gleiter**

**407.601.1466**

**Natalee@4acre.com**

**Nicholas Fouraker, CCIM**

**407.601.1466**

**Nick@4acre.com**

4 Acre Commercial Real Estate (4 Acre) does not represent or warranty the accuracy of the information contained herein. Such information has been given to 4 Acre by the owner of the property or obtained from other sources deemed reliable. 4 Acre has no reason to doubt its accuracy, but does not guarantee it. The reviewer(s) of this document is encouraged to perform their own research for their own purposes to verify the dependability of the information being reviewed. All information should be verified by reviewer(s) prior to purchase or lease. Unless otherwise noted, the property is being offered as-is, where is, with all faults. This information represents the proprietary work product of 4 Acre Realty, LLC and may not be copied, reproduced, modified, distributed, published, transmitted, or otherwise disclosed without the express written consent of 4 Acre Realty, LLC.