

CHANDLER CORPORATE CENTER II

500 N JUNIPER DR | CHANDLER, AZ 85226

PLUG & PLAY SUBLEASE AVAILABLE



FOR MORE INFORMATION, PLEASE CONTACT:

TOM ADELSON | t 602-952-3829 | tom.adelson@nmrk.com

ERIN MCCLURE | t 602-952-3830 | erin.mcclure@nmrk.com

NEWMARK

PROPERTY DETAILS



500 N Juniper Dr
Chandler, AZ 85226
BUILDING ADDRESS



Class B
BUILDING CLASS



68,520 RSF
TOTAL BUILDING SIZE



6.6 per 1,000 RSF
PARKING RATIO



±18,363 RSF
SUITE 100 SUBLEASE AVAILABLE



\$20.00/RSF
SUITE 100 FULL SERVICE GROSS RATE



±4,540 RSF
WEST WING SUBLEASE AVAILABLE



\$20.25/RSF
WEST WING FULL SERVICE GROSS RATE

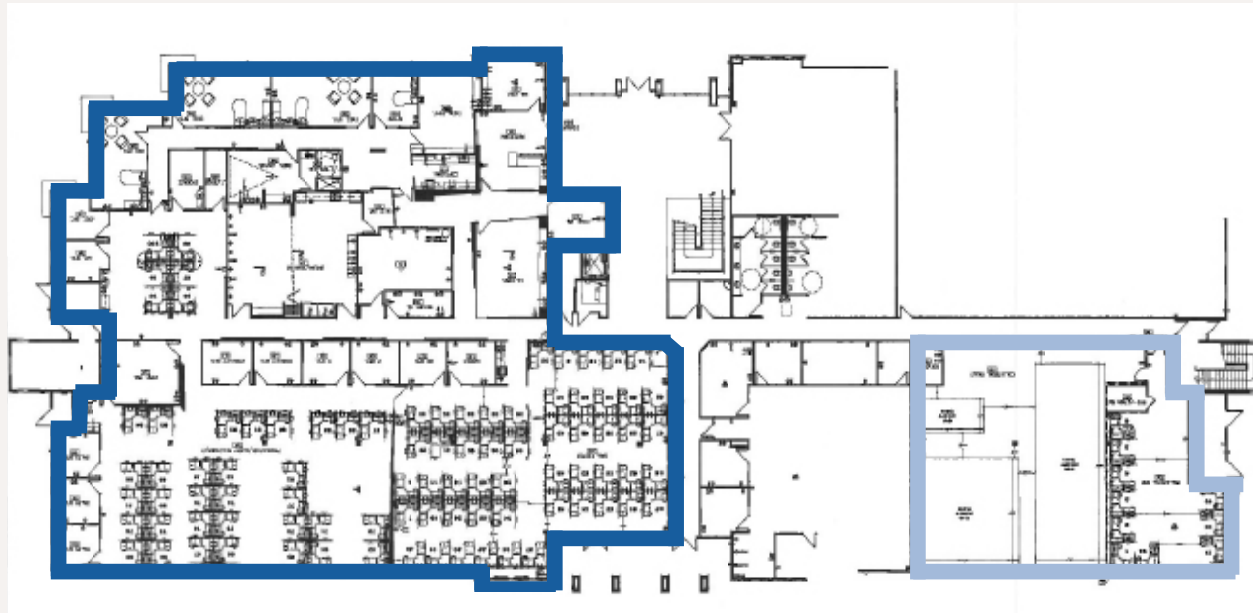


07/31/2027
TERM EXPIRES



Suite 100 ± 22,903 RSF

Plug & Play Sublease



2
LARGE CONFERENCE ROOM
- SEATS 12

WELLNESS
ROOM

2
MEDIUM CONFERENCE ROOMS -
SEATS 6-8

1
HUDDLE

1
SMALL CONFERENCE ROOMS
- SEATS 4-5

± 90
WORKSTATIONS

3
EXECUTIVE OFFICES

11
OFFICES

LARGE
BREAK AREA

SUITE 100 ± 18,363 VIRTUAL TOUR

9
WORKSTATIONS

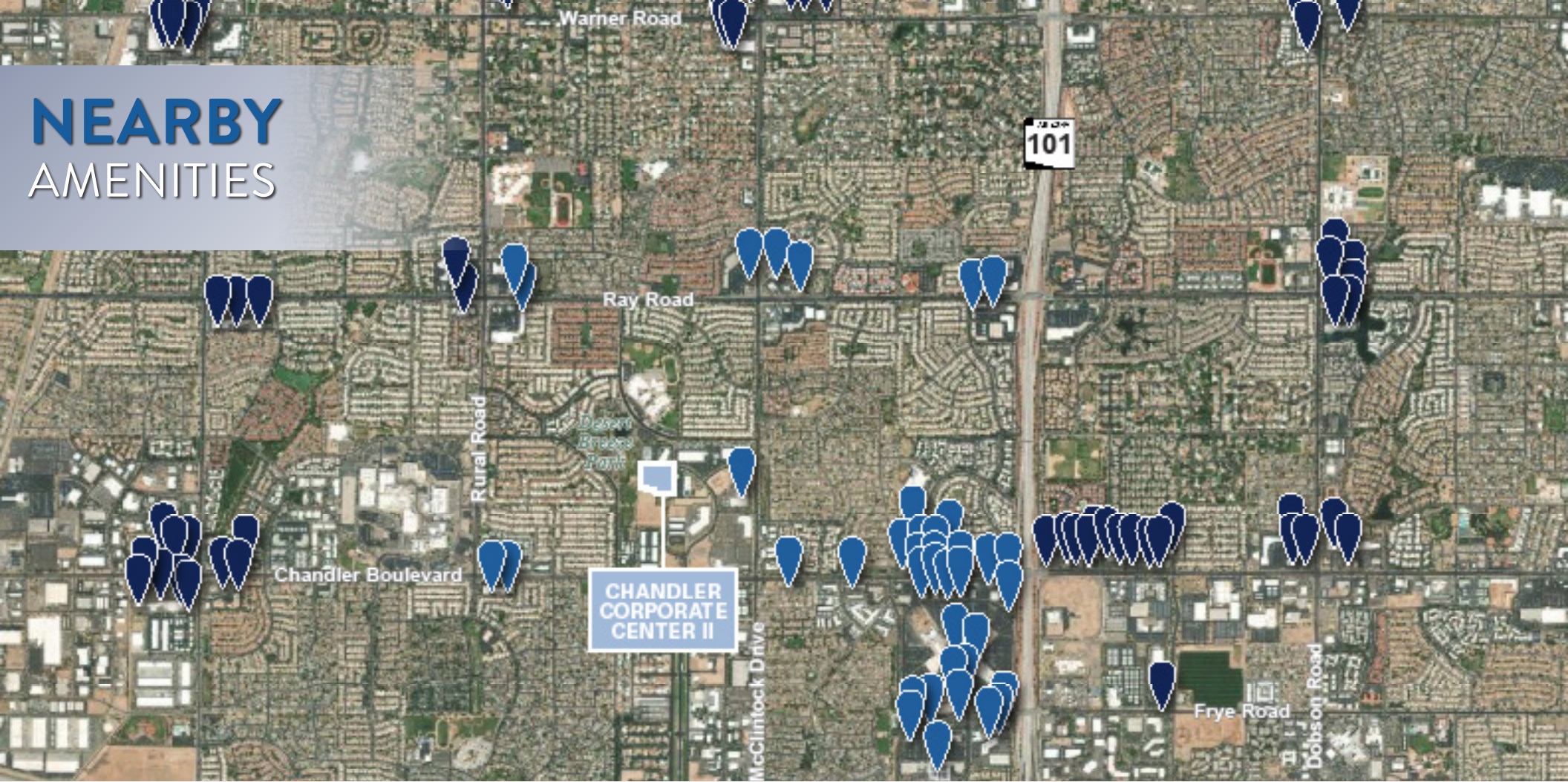
COPY
AREA

1
VAULT

KEY CARD ACCESS
BREAK AREA

WEST WING ± 4,540 VIRTUAL TOUR

NEARBY AMENITIES



DINING LESS THAN 5 MINUTE DRIVE



DINING 5+ MINUTE DRIVE



SUITE 100

±18,363 RSF



OPEN BULLPEN



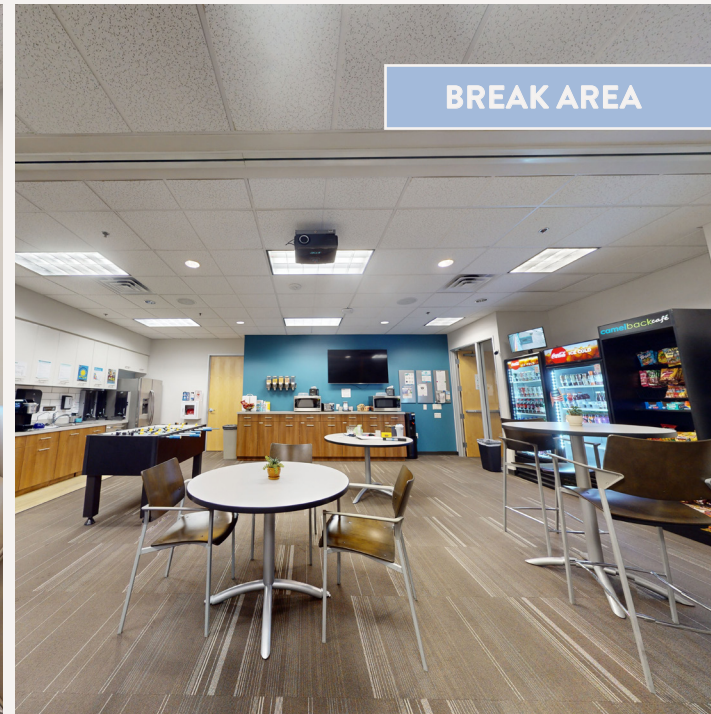
LARGE CONFERENCE ROOM



FITNESS ROOM



MEDIUM CONFERENCE ROOM



BREAK AREA

NEWMARK

TOM ADELSON
t 602-952-3829
tom.adelson@nrmk.com

ERIN MCCLURE
t 602-952-3830
erin.mcclure@nrmk.com

The distributor of this communication is performing acts for which a real estate license is required. The information contained herein has been obtained from sources deemed reliable but has not been verified and no guarantee, warranty or representation, either express or implied, is made with respect to such information. Terms of sale or lease and availability are subject to change or withdrawal without notice.