

# Industrial Building with Yard

601 West Truck Bypass  
Drumright, OK 74030  
[www.cbre.com](http://www.cbre.com)

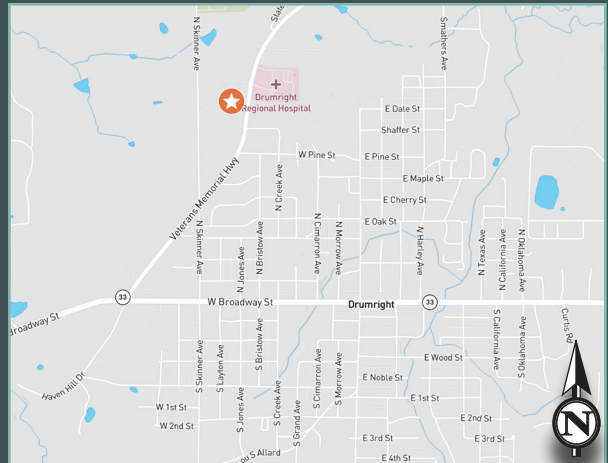
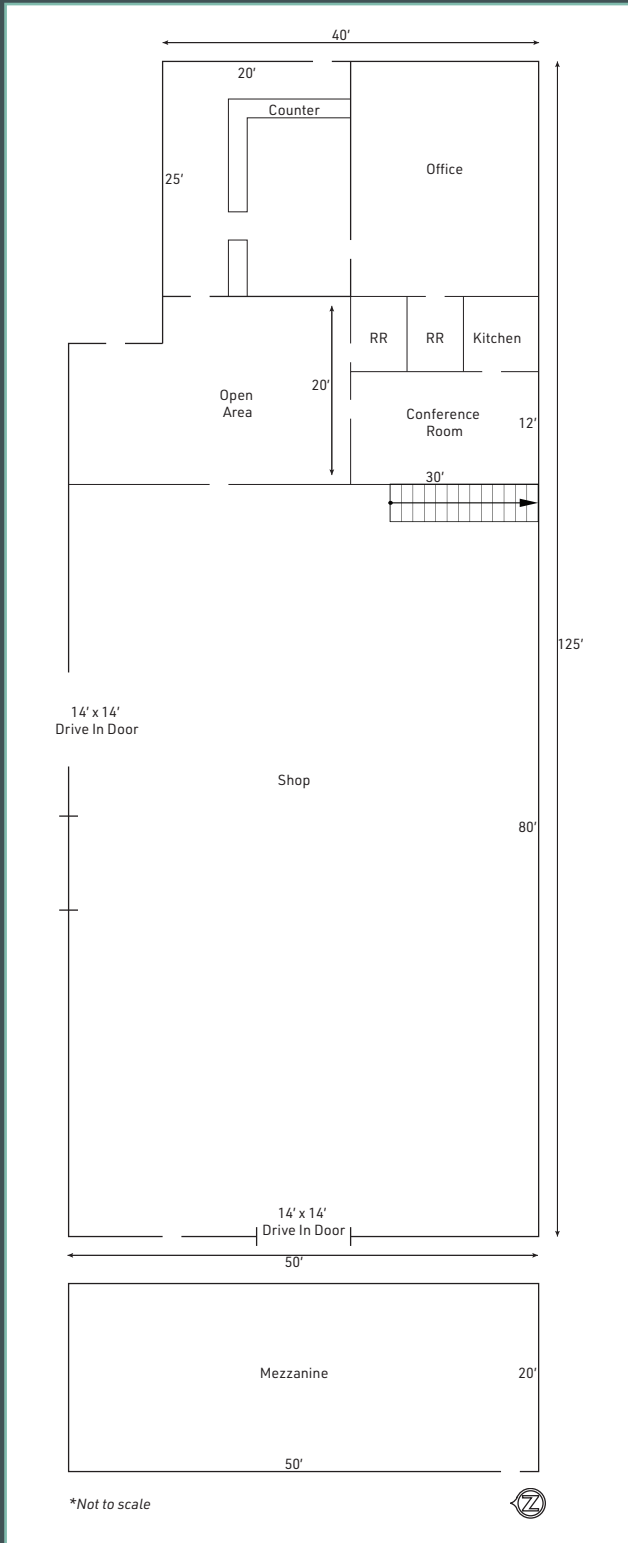
## Property Features

- + 6,000± SF Main Building
  - 1,800± SF Office
  - 4,200± SF Shop
  - 1,000± SF Mezzanine (not included in SF)
- + 15± Total Acres
  - 3.5± Acres Fenced & Gravel Yard
- + 14' Clear Height
- + (2) 14' x 14' Drive-In Doors
- + 30' x 50' Covered Storage
- + 80' x 30' Storage
- + Great for Trucking / Oil & Gas Related Industries
- + 35 Miles to Stillwater; 44 Miles to Tulsa; 76 Miles to OKC

\*Source: Owner



**Floor Plan**



**Contact Us**

**Dwayne Flynn, SIOR, CCIM**  
Senior Vice President  
+1 918 392 7249  
dwayne.flynn@cbre.com

**Ryan Shaffer, SIOR, CCIM**  
First Vice President  
+1 918 392 7203  
ryan.shaffer@cbre.com

© 2025 CBRE, Inc. All rights reserved. This information has been obtained from sources believed reliable, but has not been verified for accuracy or completeness. You should conduct a careful, independent investigation of the property and verify all information. Any reliance on this information is solely at your own risk. CBRE and the CBRE logo are service marks of CBRE, Inc. All other marks displayed on this document are the property of their respective owners, and the use of such logos does not imply any affiliation with or endorsement of CBRE. Photos herein are the property of their respective owners. Use of these images without the express written consent of the owner is prohibited.