



For Lease

410 Meadow Creek Drive,
Westminster, MD

Storefront Medical/Retail/Office space available

The Medical Office Space at Meadow Creek

- Existing Medical office layout 2,209 s.f. - 5,900 s.f. available

The Shoppes at Meadow Creek

- Retail-1,700 s.f to 2,900 s.f available
- Located on 15 acres at the intersection of MD routes 140, 31 and 97
- In the geographic center of both the Town of Westminster and Carroll County, MD

Mike Kauffman

+1 410 910 7361

mike.kauffman@jll.com

Rob Freedman

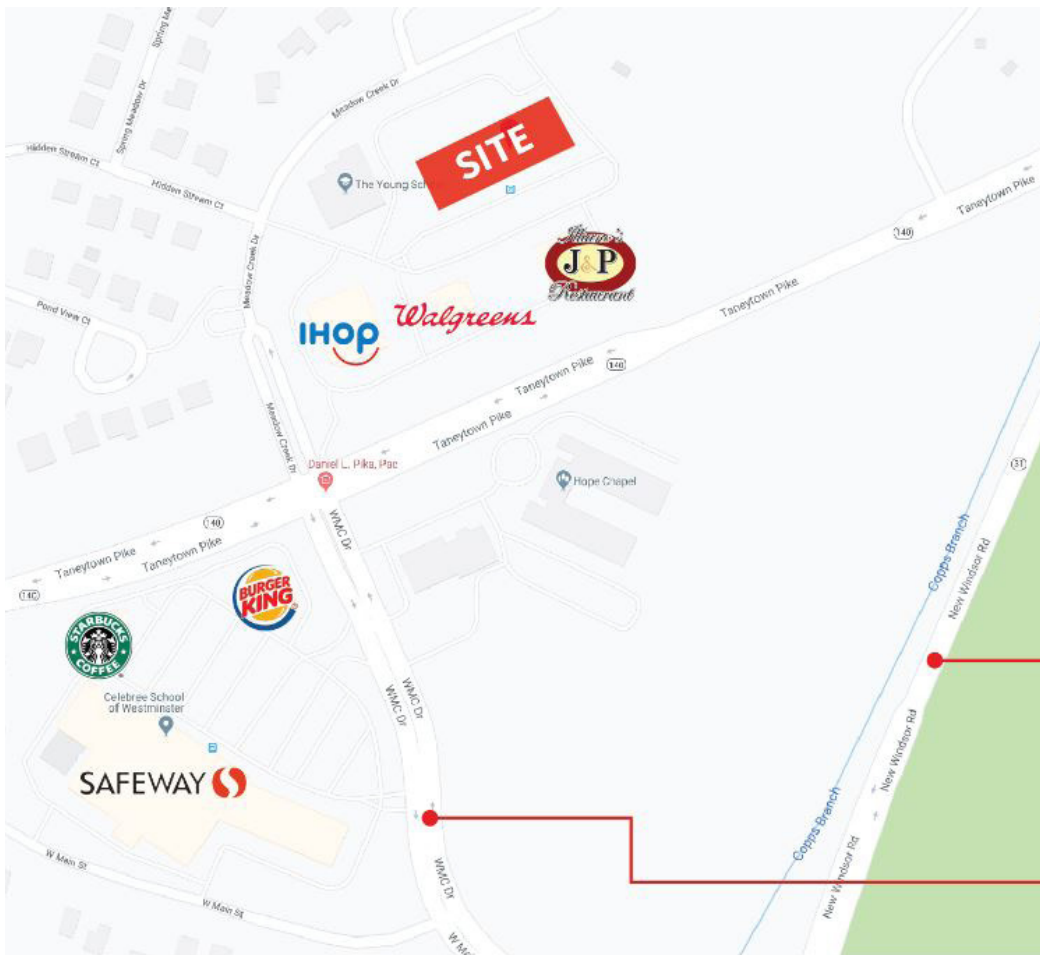
+1 443 952 9444

rob.freedman@jll.com



Demographics

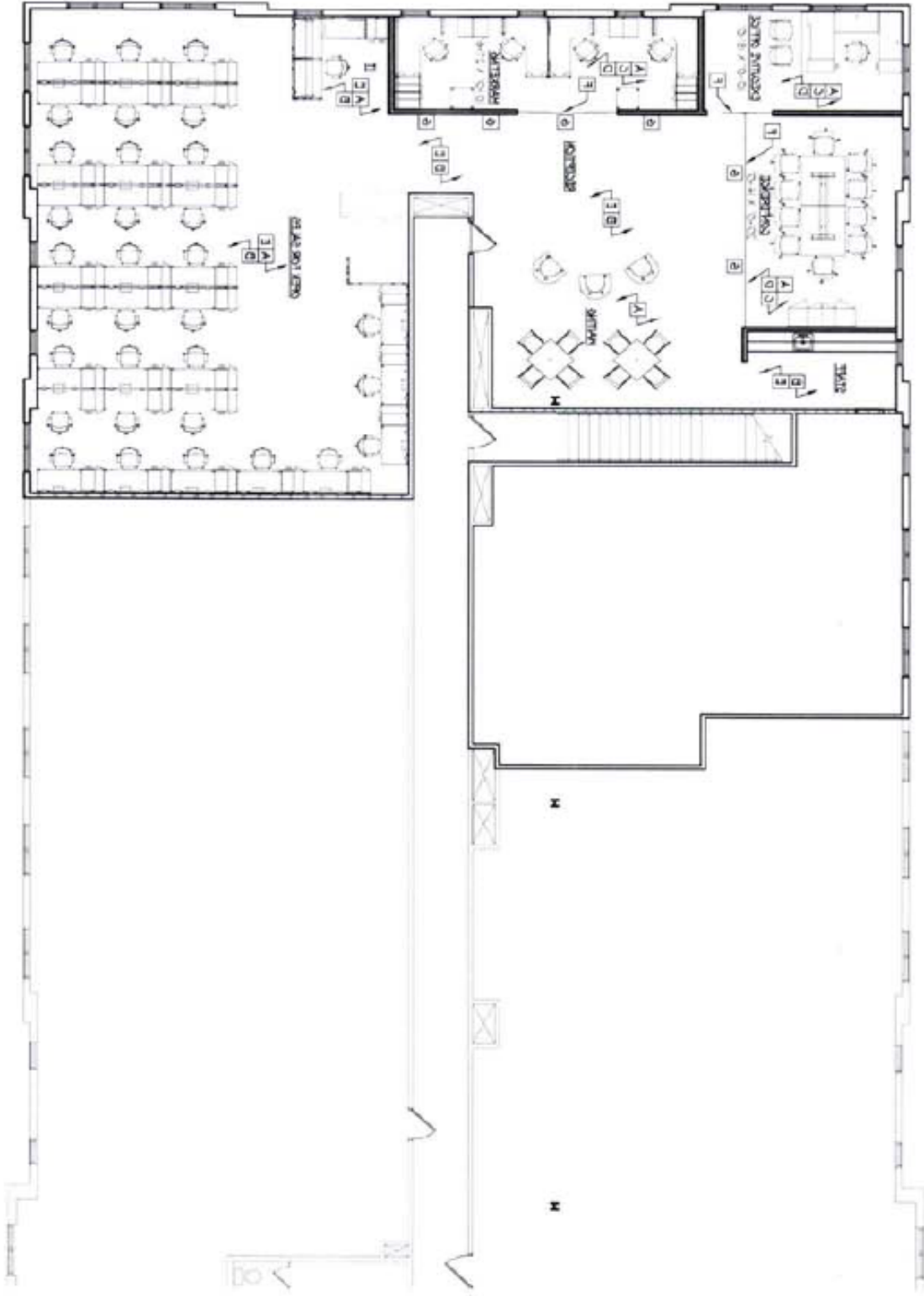
	1 mi	3 mi	5 mi
Population	8,421	30,759	42,437
Average HH Income	\$99,970	\$93,743	\$99,074
Households	2,691	11,651	15,780
Employees	2,331	24,720	28,242
Businesses	173	1,798	2,064



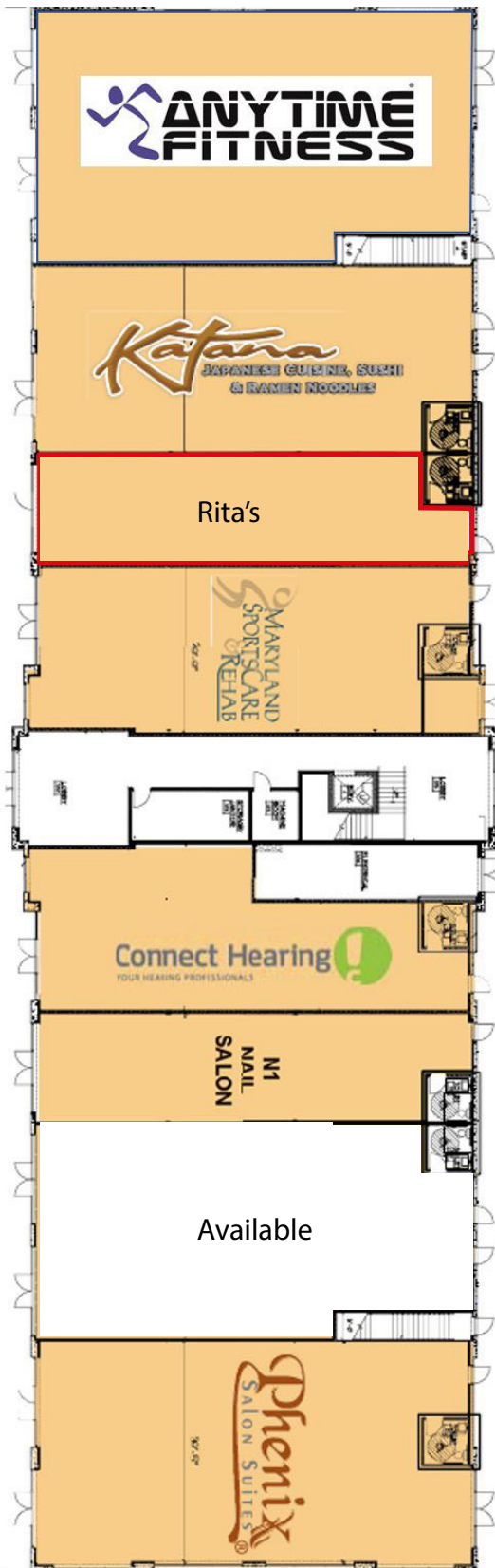
Wmc Dr
6,802

New Windsor Rd
12,820

2nd Floor Plan Office Space: 5900 sq sf



The space



410 Meadow Creek Drive
Westminster, MD

410 Meadow Creek Drive

The Shoppes at Meadow Creek

For more information,
please contact:

Mike Kauffman

+1 410 910 7361
mike.kauffman@jll.com

Rob Freedman

+1 443 952 9444
rob.freedman@jll.com

