

4746 LP - Port 106 Industrial Center

4616-4772 Ohio Ave S, Seattle, WA 98134



Darrell Sanders

darrells@americanlifeinc.com
(206) 381-1690 Ext: 126

American Life, Inc.

2450 S 6th Ave, Suite 200
Seattle, WA 98134



4746 LP - Port 106 Industrial Center



Presented by
American Life, Inc.

4616-4772 Ohio Ave S, Seattle, WA 98134



Price: Upon Request

The property at 4746 Ohio Avenue South in Seattle, known as Port 106 Building, is an industrial space located in the Industrial District of Seattle. It offers a substantial area of 282,500+ square feet and was constructed in 1943. The center was fully renovated in 2008 with all systems updated. The facility is designed to accommodate multiple tenants and is equipped with a number of truck height loading docks, and drive up loading ramps to which facilitate efficient cargo handling. This building is conveniently situated just south of downtown Seattle, with easy access to major transportation routes like I-5. It also features ample parking. Building is tenanted by local manufacturers and makers. Home to local breweries, coffee roasters and distilleries

4616-4772 Ohio Ave S, Seattle, WA 98134



Office_141700.1

Listing space

1st Floor Ste 4770B

Space Available	14,457 SF
Rental Rate	Upon Request
Date Available	60 Days
Service Type	Triple Net (NNN)
Space Type	Relet
Space Use	Flex
Lease Term	Negotiable

Located just south of downtown Seattle and minutes from the Port of Seattle. Adjacent to East Marginal Way with convenient I-5 access via S Spokane & Michigan. Space has delineated office and warehouse areas and private restrooms. Higher end finishes in offices, conference area, and restrooms. Exposed wood beams and brick walls. Rare opening in building.

4746 LP - Port 106 Industrial Center

4616-4772 Ohio Ave S, Seattle, WA 98134

Property Photos



Warehouse_141449.1

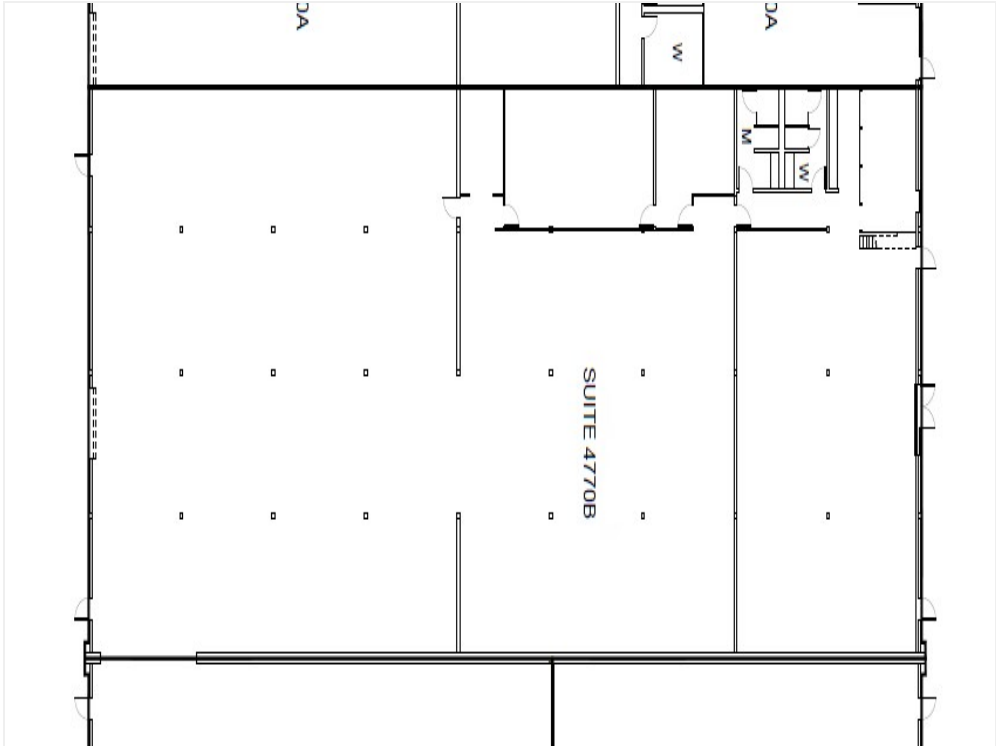


Office_141700.1

4746 LP - Port 106 Industrial Center

4616-4772 Ohio Ave S, Seattle, WA 98134

Property Photos



Floor Plan

4746 LP - Port 106 Industrial Center

4616-4772 Ohio Ave S, Seattle, WA 98134

Location

