

For **sublease**



# Professional Office Available In Dallas, TX

17440 N Dallas Pkwy, Suite 116, Dallas, TX 75287  
Suite 101

## SPACE PROFILE

2,437 SF

Total SF

Immediate

Availability

Negotiable

Rental rate

1983/2009

Year Built/Renovated

11/30/2026

Term

**savills**

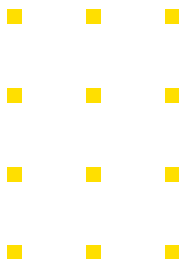


## PROPERTY OVERVIEW

Located directly off of Dallas North Tollway

Surface and covered parking available

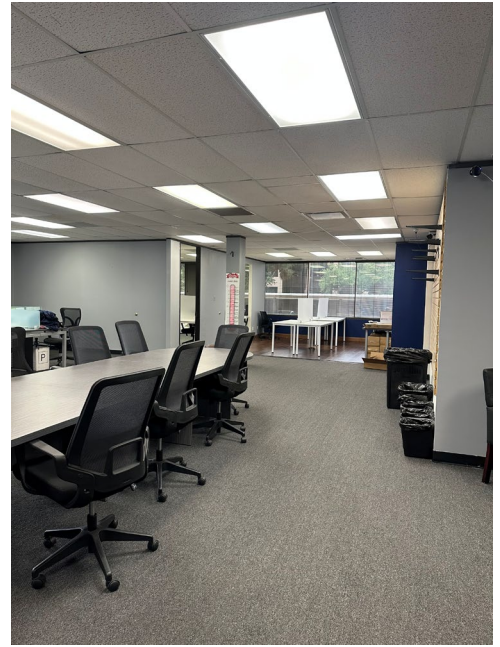
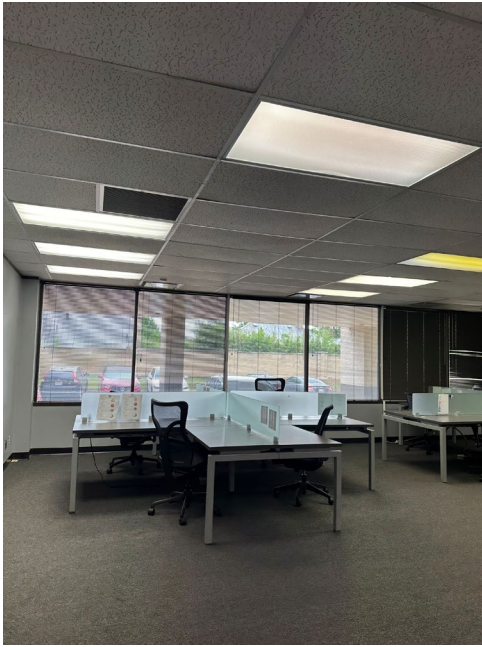
Within minutes of many restaurants, retail, grocery and banking





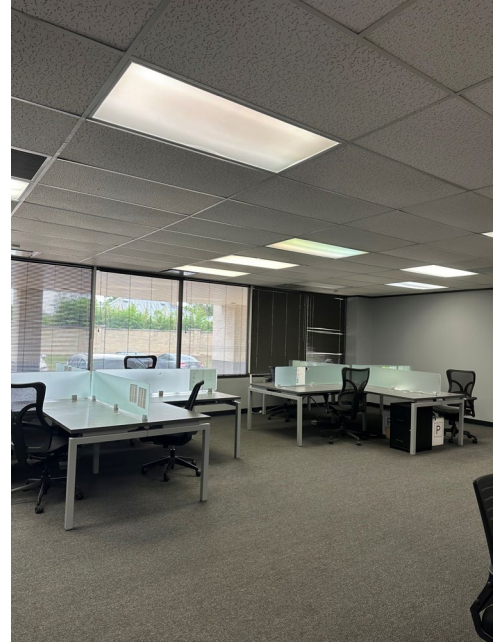
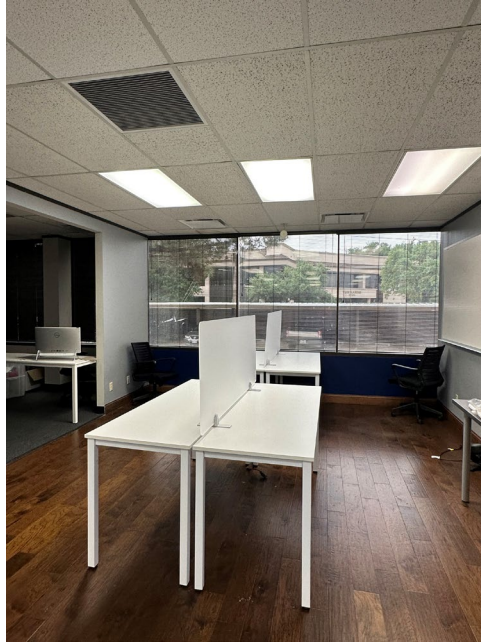
Suite 101

2,437 SF Available



Suite 101

2,437 SF Available



#### Sublease Highlights

- Entry Area
- Open Floorplan
- Bullpen Workstations
- Private Conference Room
- Kitchenette



# Contact Us

## Clay Vaughn

Vice Chairman  
+1 214 537 4499  
[cvaughn@savills.us](mailto:cvaughn@savills.us)

## Patrick Cromwell

Assistant Director  
+1 714 369 5723  
[pcromwell@savills.us](mailto:pcromwell@savills.us)

## Olivia McNeel

Associate  
+1 210 394 5106  
[omcneel@savills.us](mailto:omcneel@savills.us)