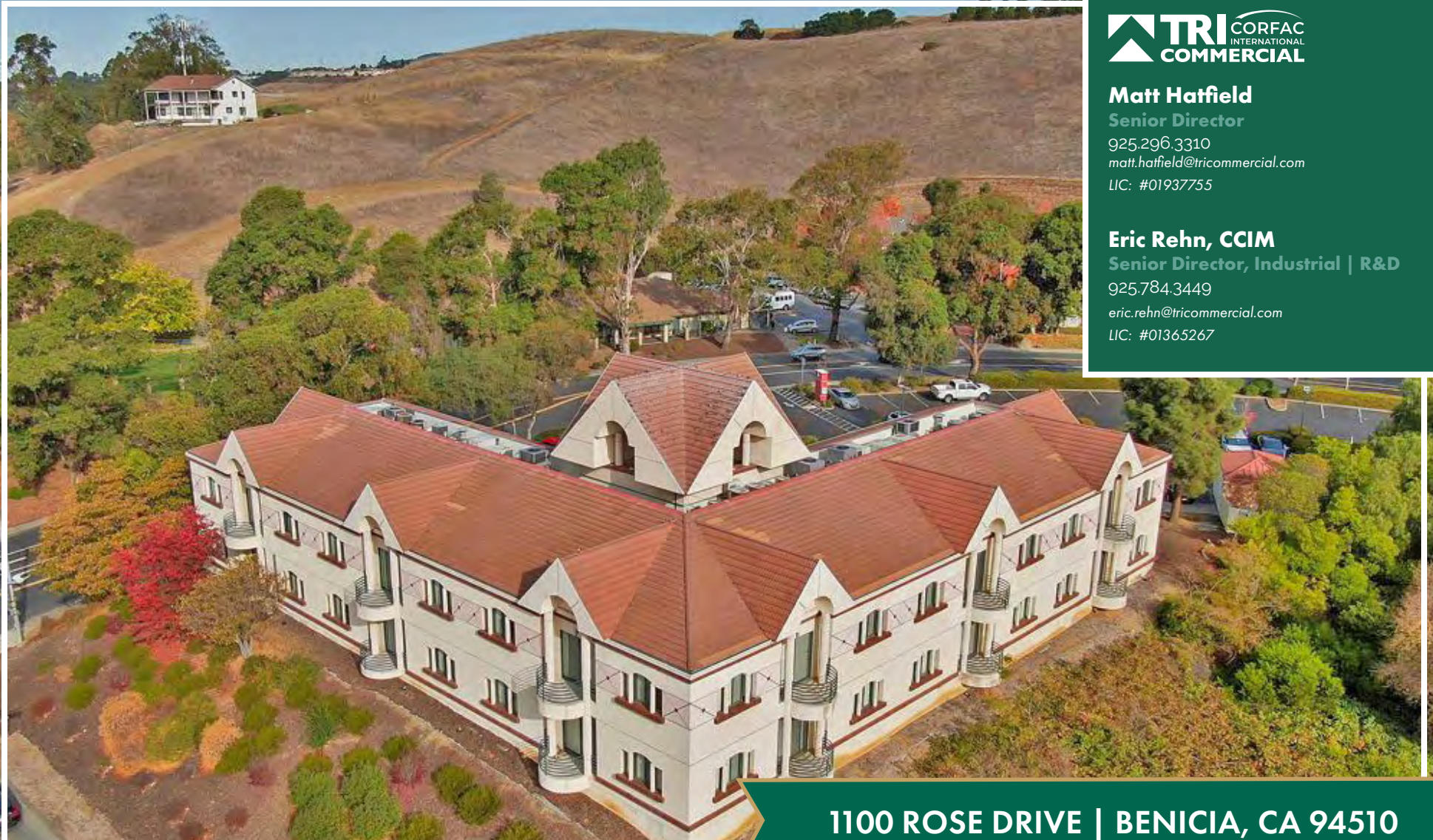


# MEDICAL OFFICE SUITES FOR LEASE

**ROSE MEDICAL PARK | EASY ACCESS TO I-780**



**Matt Hatfield**

Senior Director

925.296.3310

[matt.hatfield@tricommercial.com](mailto:matt.hatfield@tricommercial.com)

LIC: #01937755

**Eric Rehn, CCIM**

Senior Director, Industrial | R&D

925.784.3449

[eric.rehn@tricommercial.com](mailto:eric.rehn@tricommercial.com)

LIC: #01365267

**1100 ROSE DRIVE | BENICIA, CA 94510**

# FOR LEASE

1100 ROSE DRIVE | BENICIA, CA 94510

**ROSE MEDICAL PARK  
EASY ACCESS TO I-780**



## PROPERTY HIGHLIGHTS

- Rose Medical Park is located off Rose Drive and Columbus Parkway with direct access to I-780
- The property boasts high-end finishes and artwork
- Ample parking
- **Parking:** 3.70/1,000

## AVAILABLE

- **Suite 230:** ±1,299 SF
- **Rent:** \$1.98 PSF/Month, NNN
- **NNN:** \$0.80 PSF/Month (estimated)
- **Availability:** Now
- 3 exam rooms
- Ensuite restroom
  
- **Suite 224:** ±409 SF
- **Rent:** \$2.24 PSF/Month, NNN
- **NNN:** \$0.80 PSF/Month (estimated)
- **Availability:** 30 days



### Matt Hatfield

925.296.3310  
matt.hatfield@tricommercial.com  
LIC: #01937755

### Eric Rehn, CCIM

925.784.3449  
eric.rehn@tricommercial.com  
LIC: #01365267



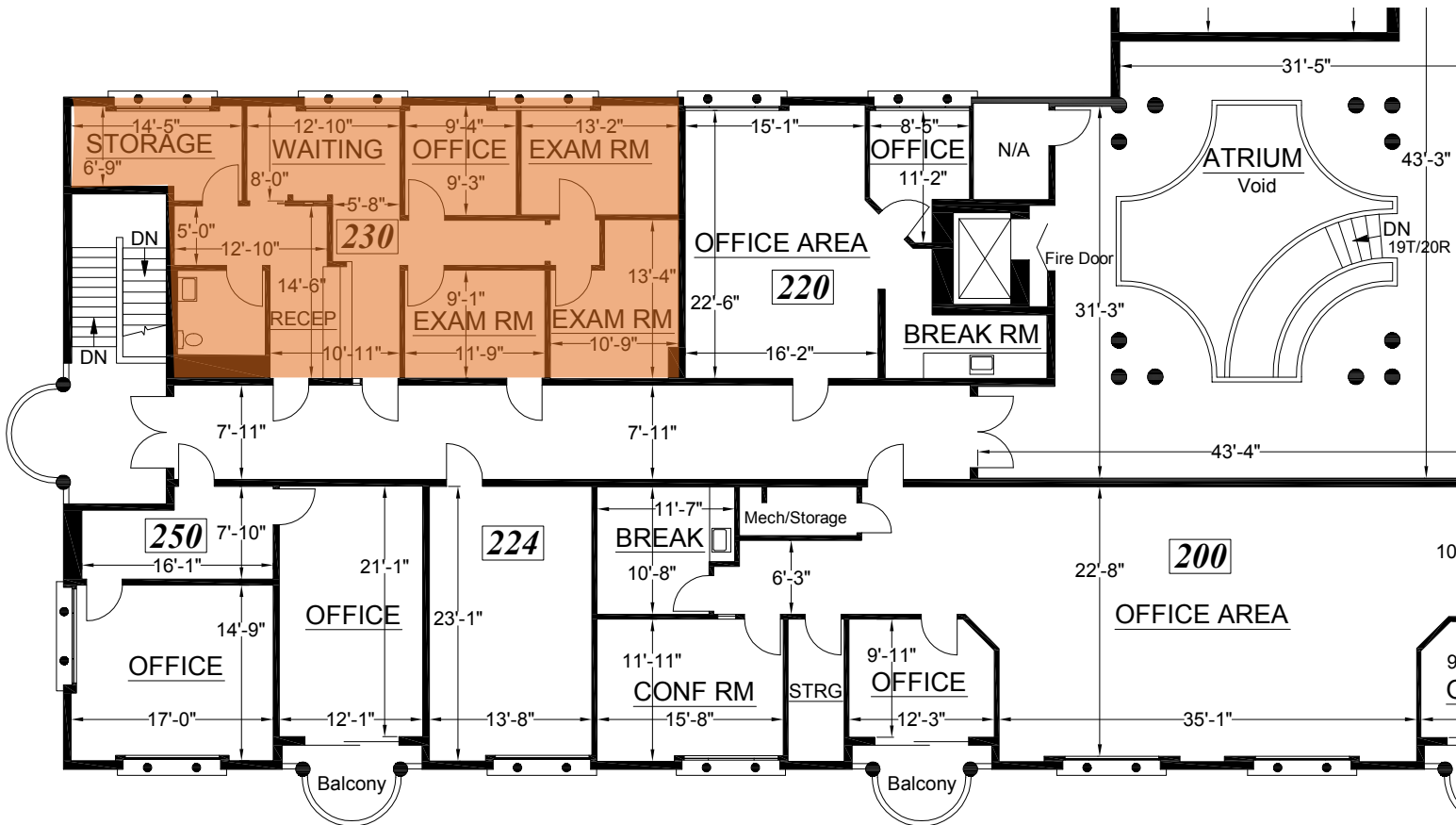
www.tricommercial.com

# FOR LEASE

1100 ROSE DRIVE | BENICIA, CA 94510

ROSE MEDICAL PARK  
EASY ACCESS TO I-780

Suite 230: ±1,299 SF | \$1.98 PSF/Month, NNN



**Matt Hatfield**

925.296.3310  
matt.hatfield@tricommercial.com  
LIC: #01937755

**Eric Rehn, CCIM**

925.784.3449  
eric.rehn@tricommercial.com  
LIC: #01365267



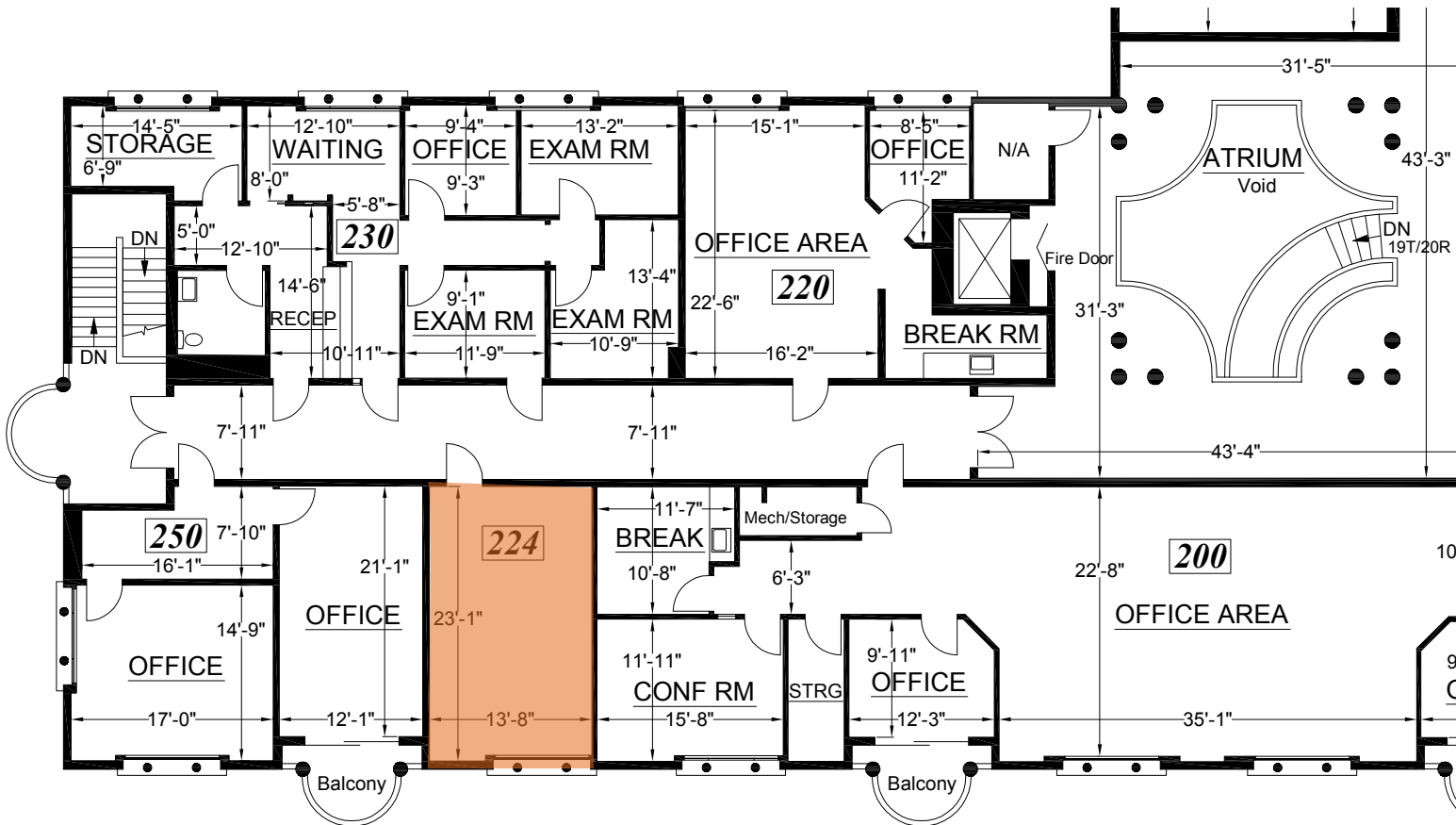
www.tricommercial.com

# FOR LEASE

1100 ROSE DRIVE | BENICIA, CA 94510

ROSE MEDICAL PARK  
EASY ACCESS TO I-780

Suite 224: ±409 SF | \$2.24 NNN, Availability: 30 days



**Matt Hatfield**

925.296.3310  
matt.hatfield@tricommercial.com  
LIC: #01937755

**Eric Rehn, CCIM**

925.784.3449  
eric.rehn@tricommercial.com  
LIC: #01365267

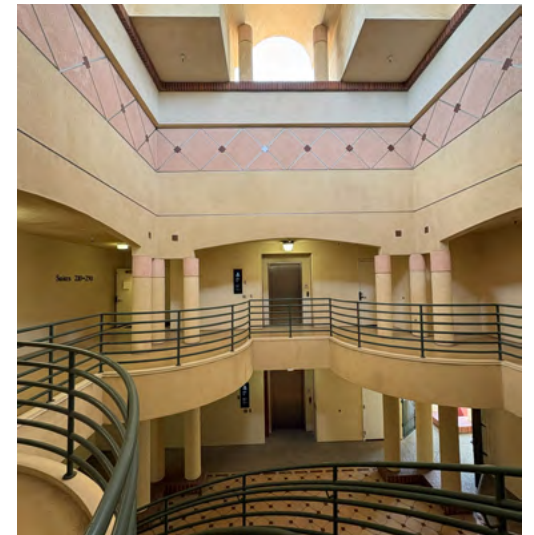


www.tricommercial.com

# FOR LEASE

1100 ROSE DRIVE | BENICIA, CA 94510

ROSE MEDICAL PARK  
EASY ACCESS TO I-780



**Matt Hatfield**

925.296.3310  
matt.hatfield@tricommercial.com  
LIC: #01937755

**Eric Rehn, CCIM**

925.784.3449  
eric.rehn@tricommercial.com  
LIC: #01365267



www.tricommercial.com