



PROPERTY  
RESERVE

**Jordan Johnson**

**801.321.8711**

**[Jordan.Johnson@propertyreserve.org](mailto:Jordan.Johnson@propertyreserve.org)**



### **Address**

131-165 Social Hall Ave. Salt Lake City, UT 84111

### **Eagle Gate Terrace Overview**

Retail Spaces below Eagle Gate Parking Garage

Located on Social Hall Ave, in the heart of Salt Lake City's central business district, Eagle Gate Terrace is home to exclusive retail spaces. Conveniently located across the street from Harmon's, these spaces are easily accessible to the public and visitors to the City Creek Center. City Creek Center, one of the nation's largest and most acclaimed mixed-use downtown redevelopment projects. This unique environment features a retractable glass roof, the very popular City Creek Center food court, a creek that runs through the property, a pedestrian sky bridge and more. City Creek Center features world class fashion restaurants



### **Parking**

Covered parking for tenants is available within the block at prevailing market rates. Guests are encouraged to park in the City Creek Center Garage with the first 2 hours free

### **Public Transit**

Within easy walking distance to bus stations, TRAX stations, and Frontrunner stations

### **Lease Rate**

NNN

### **Improvements**

Generous TI packages available





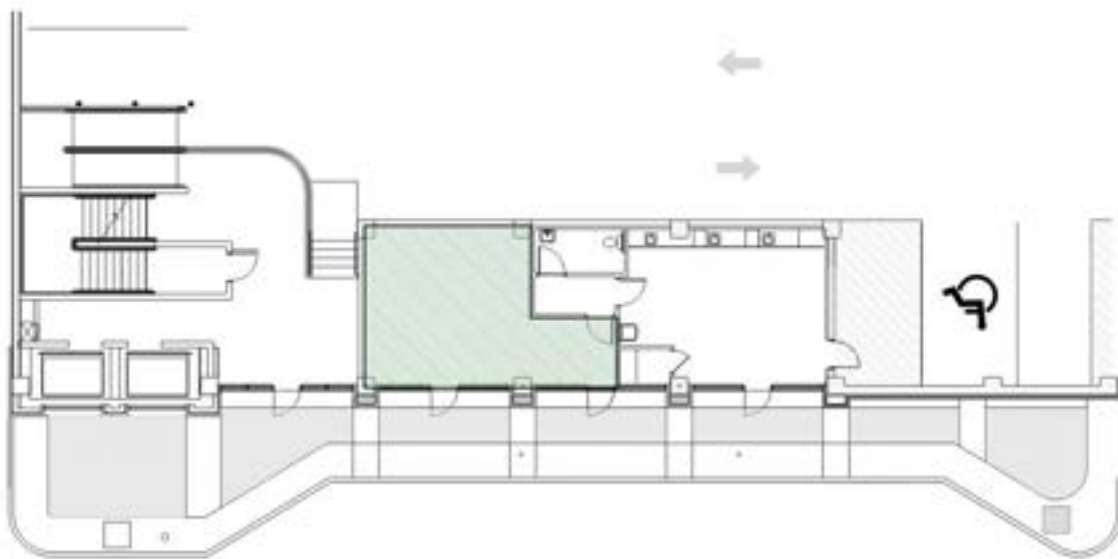
## Suite 131

Rentable Square Feet: 452

Lease Rates: \$30.00-\$32.00/RSF

Status: Available

Condition: Prior tenant design still intact



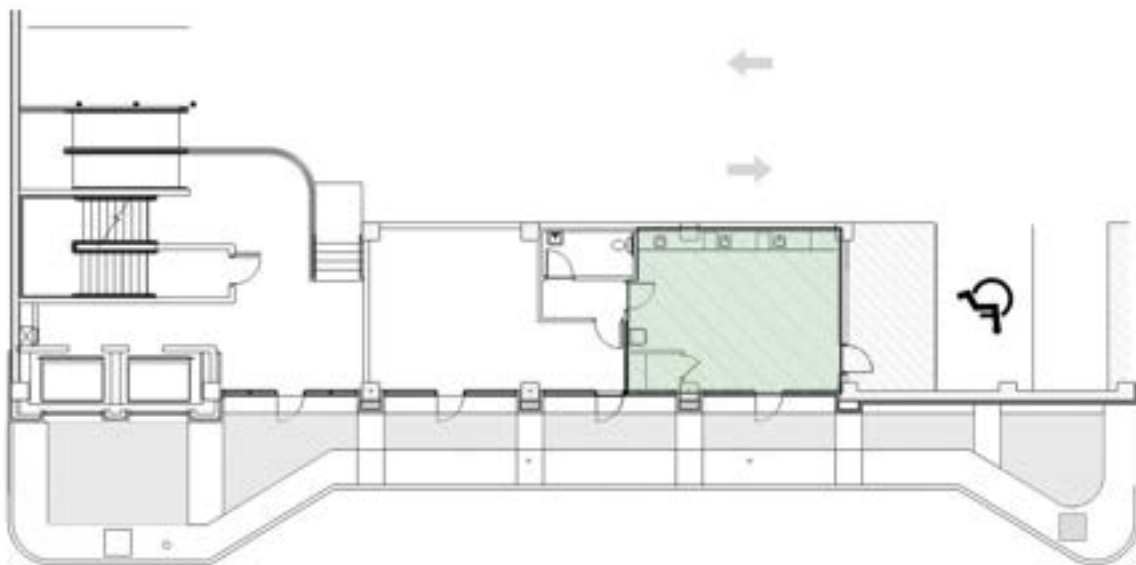
## Suite 135

Rentable Square Feet: 490

Lease Rates: \$30.00-\$32.00/RSF

Status: Available

Condition: Prior tenant design still intact



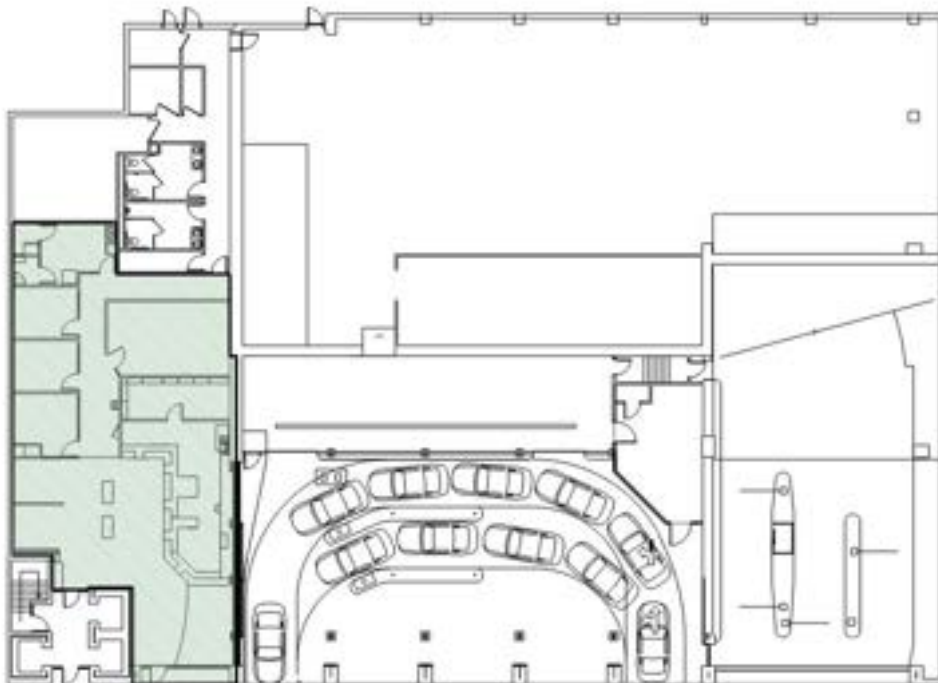
## Suite 145

Rentable Square Feet: 3,521

Lease Rates: \$30.00-\$32.00/RSF

Status: Available

Condition: Prior tenant design still intact





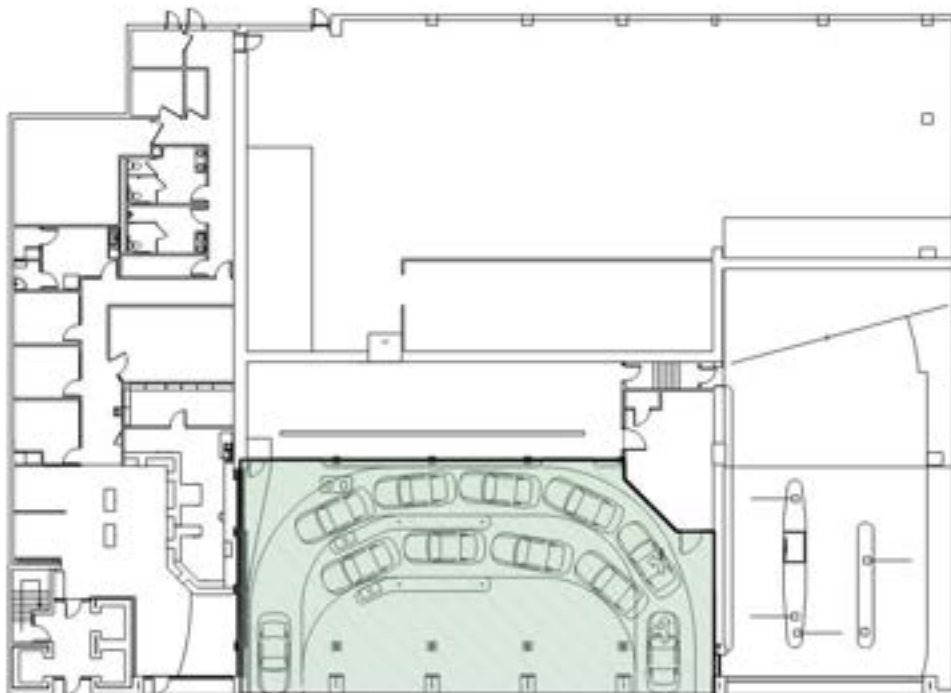
## Suite 157 Drive Through

Rentable Square Feet: 4,336

Lease Rates: \$30.00-\$32.00/RSF

Status: Available

Condition: Prior tenant design still intact



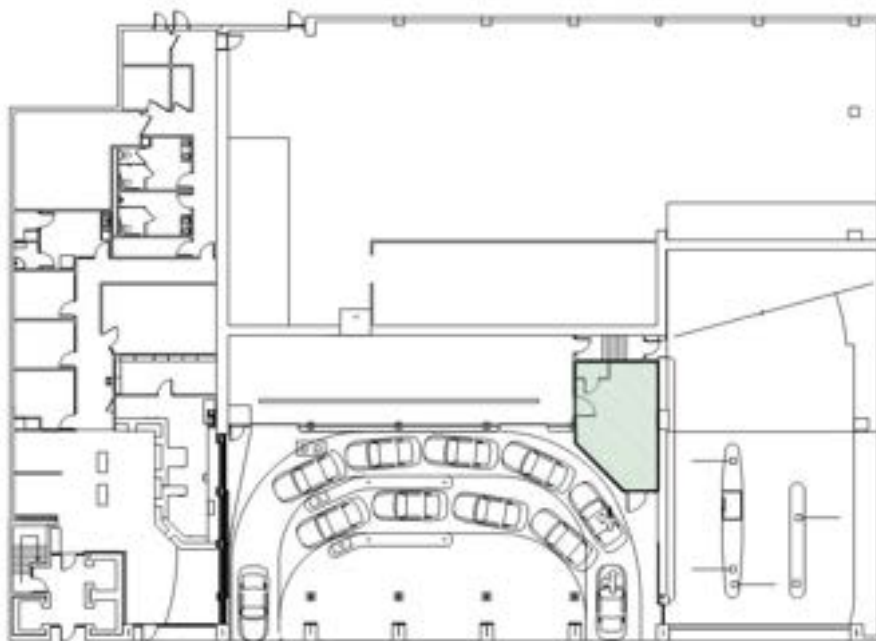
## Suite 165

Rentable Square Feet: 461

Lease Rates: \$30.00-\$32.00/RSF

Status: Available

Condition: Prior tenant design still intact



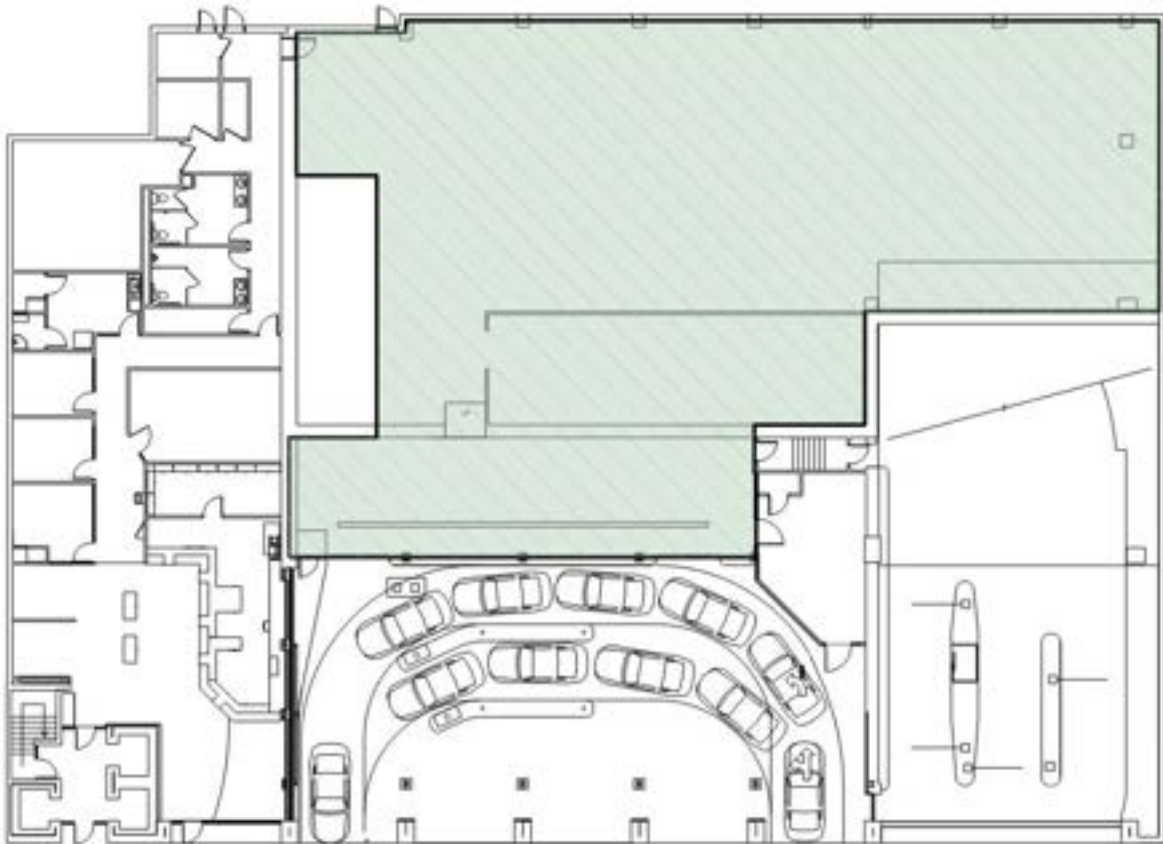
## Storage Space

Rentable Square Feet: 9,752

Lease Rates: \$25.00-\$30.00/RSF

Status: Available

Condition: Storage





# In the Heart of Salt Lake City

● Food & Drink ● Experiences ● Lodging



Six World-Famous  
Ski Resorts –  
30 Minutes →



## Contact

Jordan Johnson 801.321.8711  
Jordan.Johnson@propertyreserve.org



PROPERTY  
RESERVE