



FOR LEASE | **233,659 SF**
202 SPAULDING ST | **DOWAGIAC, MI**

KURT JENSEN 262-308-0008 | KURT@PHOENIXINVESTORS.COM



PHOENIX
INVESTORS

Opportunity. Execution. Value Creation.

This document has been prepared by Phoenix Investors for advertising and general information only. Phoenix Investors makes no guarantees, representations, or warranties of any kind, expressed or implied, regarding the information including, but not limited to, warranties of content, accuracy, and reliability.



PROPERTY HIGHLIGHTS



**30,400-SF AUXILIARY
BUILDING AVAILABLE**



INTERIOR RAIL SPUR



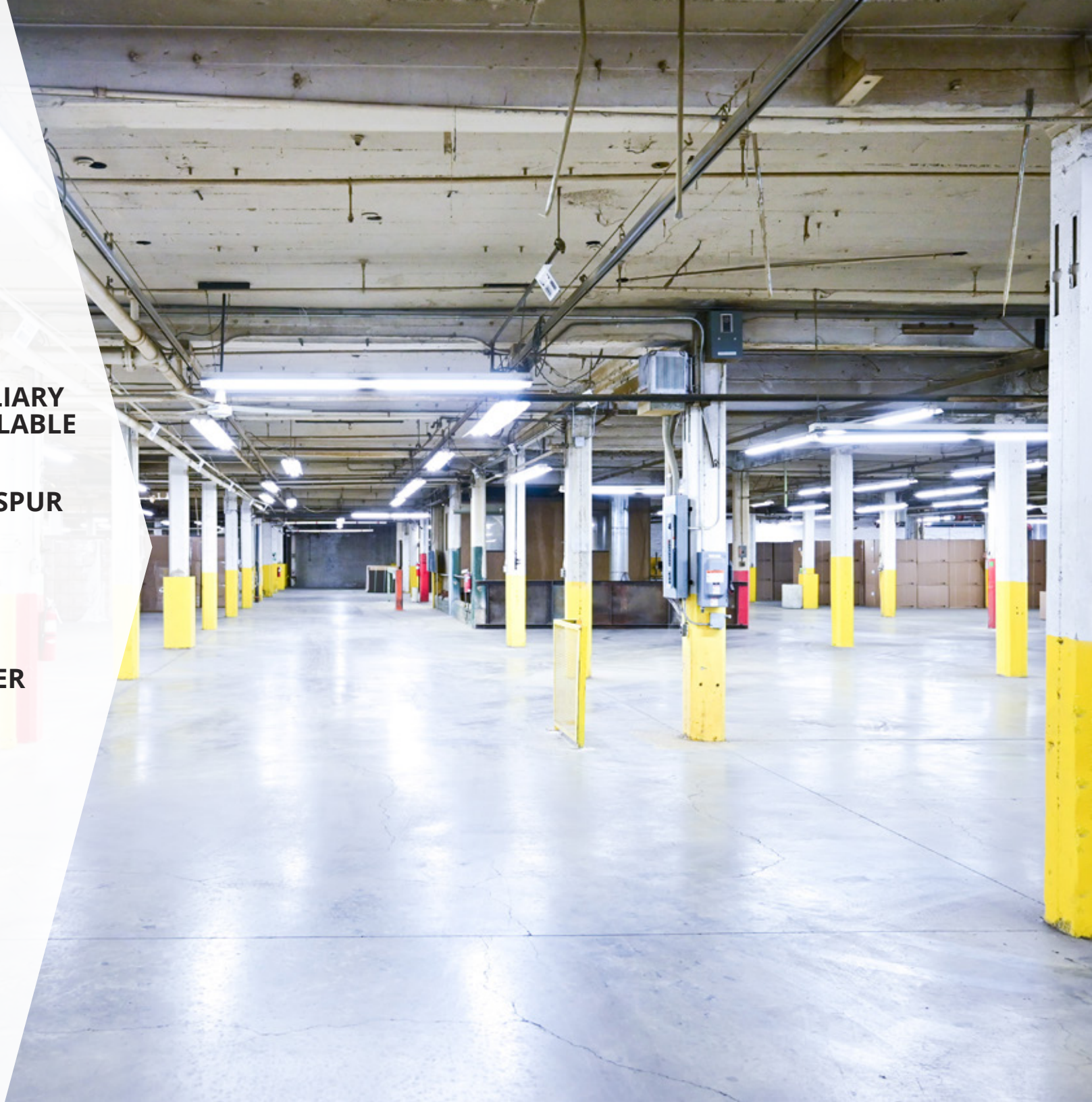
**A/C IN OFFICE
PORTION**



1,480 KVA POWER



**46,441 SF
AVAILABLE ON
7/1/2025**



PROPERTY DETAILS

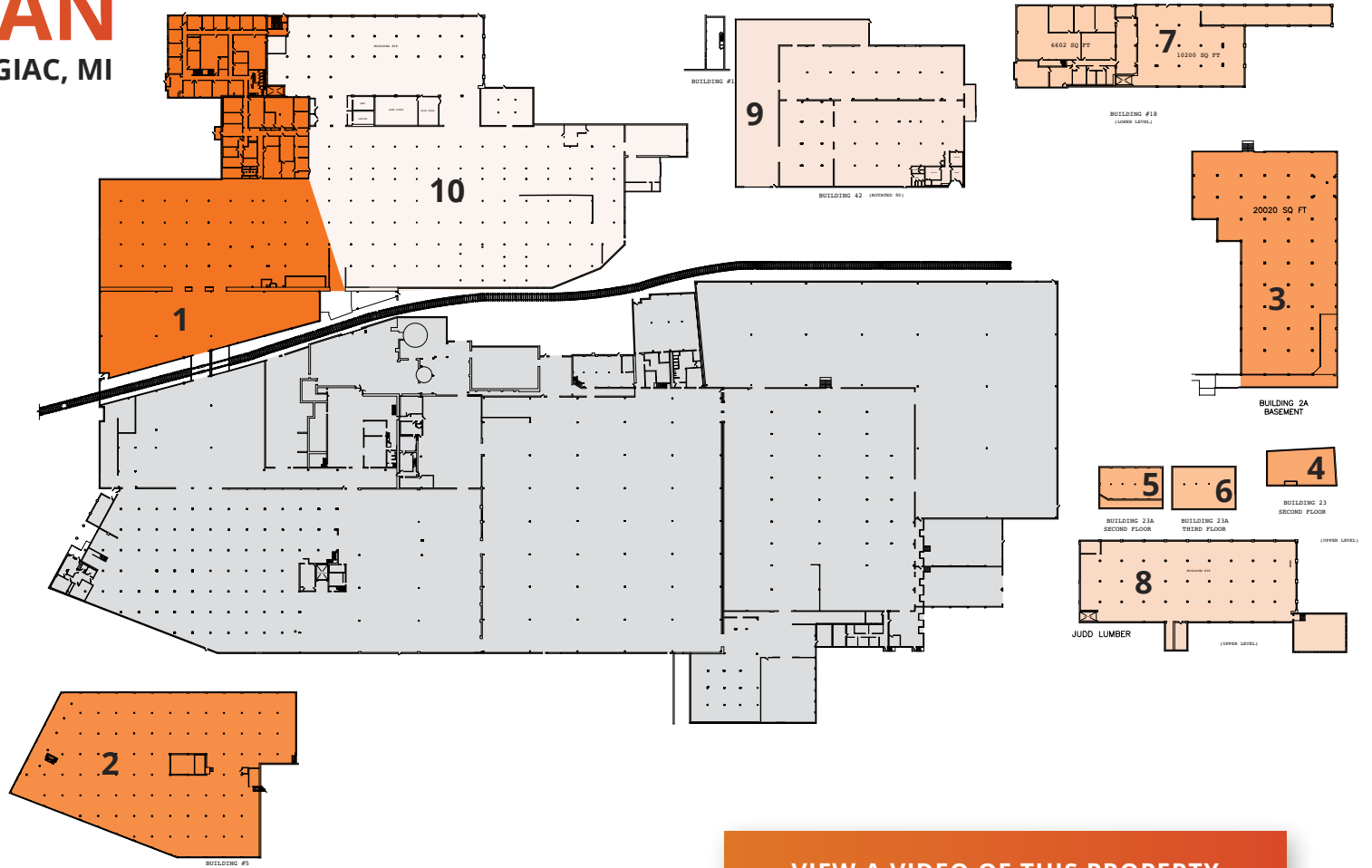
202 SPAULDING ST | DOWAGIAC, MI

AVAILABLE SPACE	233,659 SF
MINIMUM DIVISIBLE	2,145 SF
DOCK DOORS	6
GRADE-LEVEL DRIVE-IN DOORS	16
FREIGHT ELEVATOR	(1) 5,000-lb Capacity
CLEAR HEIGHT	19' in Newer Section, 16' on Average
COLUMN SPACING	30' x 42', 18' x 20'
ROOF	Varies: Membrane & Tar, Rubber
WALLS	Steel Frame with Block Exterior Wood Frame with Block Exterior
FLOORS	8" - 10" Reinforced Concrete
YEAR BUILT	1900 - 1980
FIRE SUPPRESSION	Wet
LIGHTING	LED, Motion Sensored
POWER	4,180 KVA 10 On-Site Transformers
ELECTRIC & GAS	AEP
HVAC	Boiler 300 HP Max BTU: 12,186,000
PARKING	15 Trailer 175 Auto
LAND AREA	28.69 Acres
ZONING	I-2: Heavy Industrial
PARCEL ID	14-160-300-069-00, 14-1660-200-068-00
RAIL	Norfolk Southern Rail Line



FLOOR PLAN

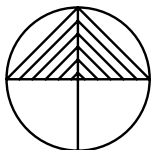
202 SPAULDING ST | DOWAGIAC, MI



[VIEW A VIDEO OF THIS PROPERTY](#)

NUMBER	SPACE DESIGNATION	SQUARE FEET
1	MULTIPLE BUILDINGS	62,712 SF
2	BUILDING 5 SECOND FLOOR	30,236 SF
3	BUILDING 2A BASEMENT	22,350 SF
4	BUILDING 23 SECOND FLOOR	2,145 SF
5	BUILDING 23A SECOND FLOOR OFFICE	2,281 SF

6	BUILDING 23A THIRD FLOOR	2,345 SF
7	BUILDING 18 BASEMENT	17,425 SF
8	BUILDING 18 SECOND FLOOR	17,324 SF
9	BUILDING 42	30,400 SF
10	AVAILABLE 7/1/2025	46,441 SF
TOTAL		233,659 SF



LOCATION MAP

202 SPAULDING ST | DOWAGIAC, MI

FORT WAYNE	101 MILES
CHICAGO	113 MILES
INDIANAPOLIS	172 MILES
DETROIT	181 MILES

