

# FOR LEASE

## CAMRYN STATION

15960 North James Madison Highway | Dillwyn, VA 23936



S.L. NUSBAUM  
REALTY CO.



UNIT 3 – 1,400 SF

### EMMA WILL

Associate

O. 804.508.7283

C. 804.821.9042

ewill@slnusbaum.com

### ADAM SHOR

Senior Associate

O. 804.944.2437

C. 804.332.3323

ashor@slnusbaum.com

### ANDREW THACKER

Vice President

O. 804.320.7600

C. 804.357.6075

athacker@slnusbaum.com

### NATHAN SHOR

Senior Vice President | Partner

O. 804.944.2399

C. 804.539.7404

nshor@slnusbaum.com

PROUD PARTNER

**XTEAM**  
RETAIL ADVISORS



# PROPERTY SUMMARY

## CAMRYN STATION

15960 North James Madison Highway | Dillwyn, VA 23936



**S.L. NUSBAUM**  
REALTY CO.



### OFFERING SUMMARY

Lease Rate:	Contact Agents
Building Size:	11,200 SF
Available SF:	1,400 SF
Zoning:	B-1

DEMOGRAPHICS	3 MILES	5 MILES	7 MILES
Total Population	3,963	5,572	7,153
Total Households	785	1,449	2,058
Average HH Income	\$85,903	\$85,062	\$82,297

### PROPERTY OVERVIEW

#### Retail Space for Lease at Camryn Station

### PROPERTY HIGHLIGHTS

- Ideal for local operators, convenience retail or service businesses
- Ample parking ratio
- Monument signage available

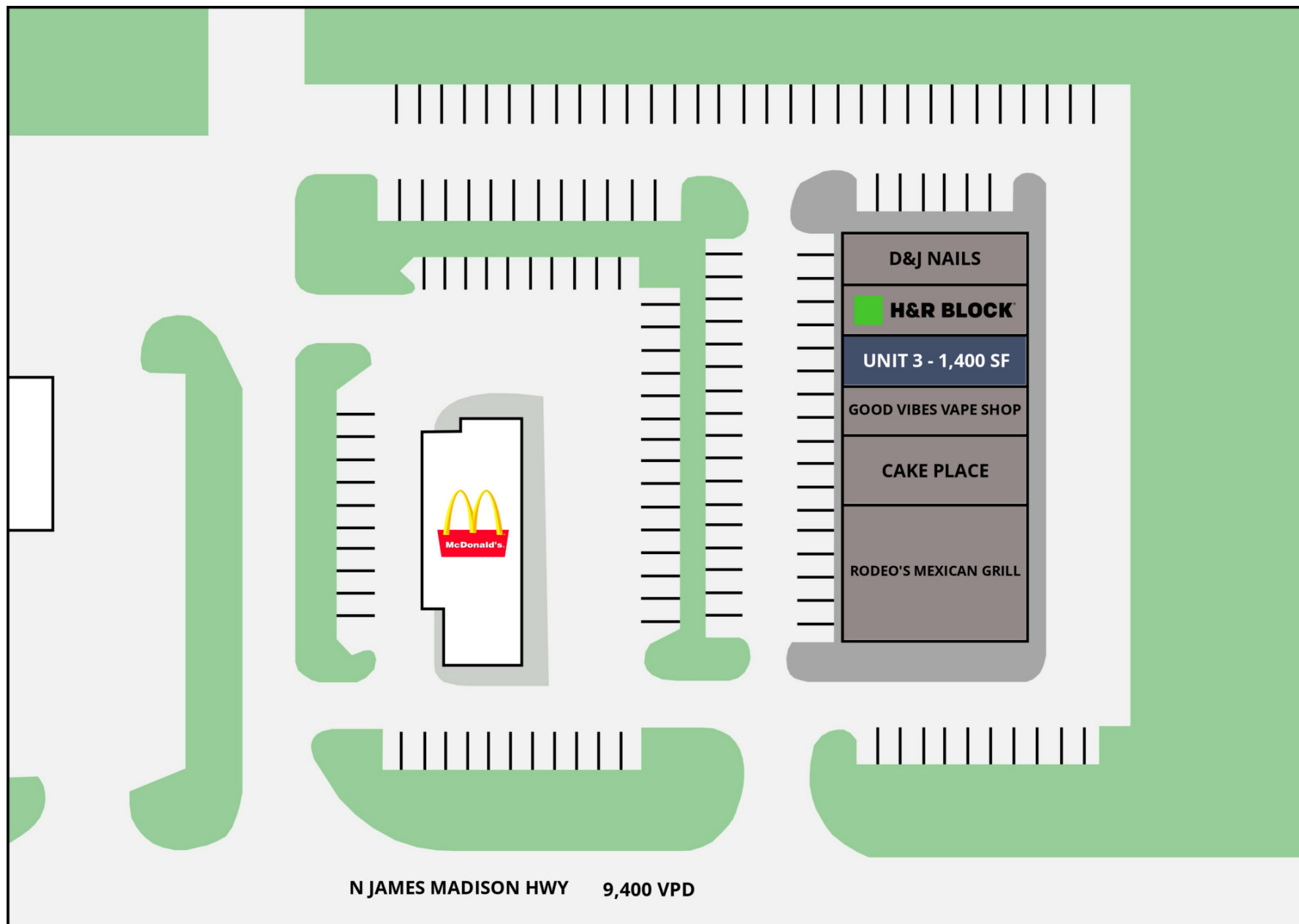
# PLANS

## CAMRYN STATION

15960 North James Madison Highway | Dillwyn, VA 23936



S.L. NUSBAUM  
REALTY CO.





# TRADE AREA

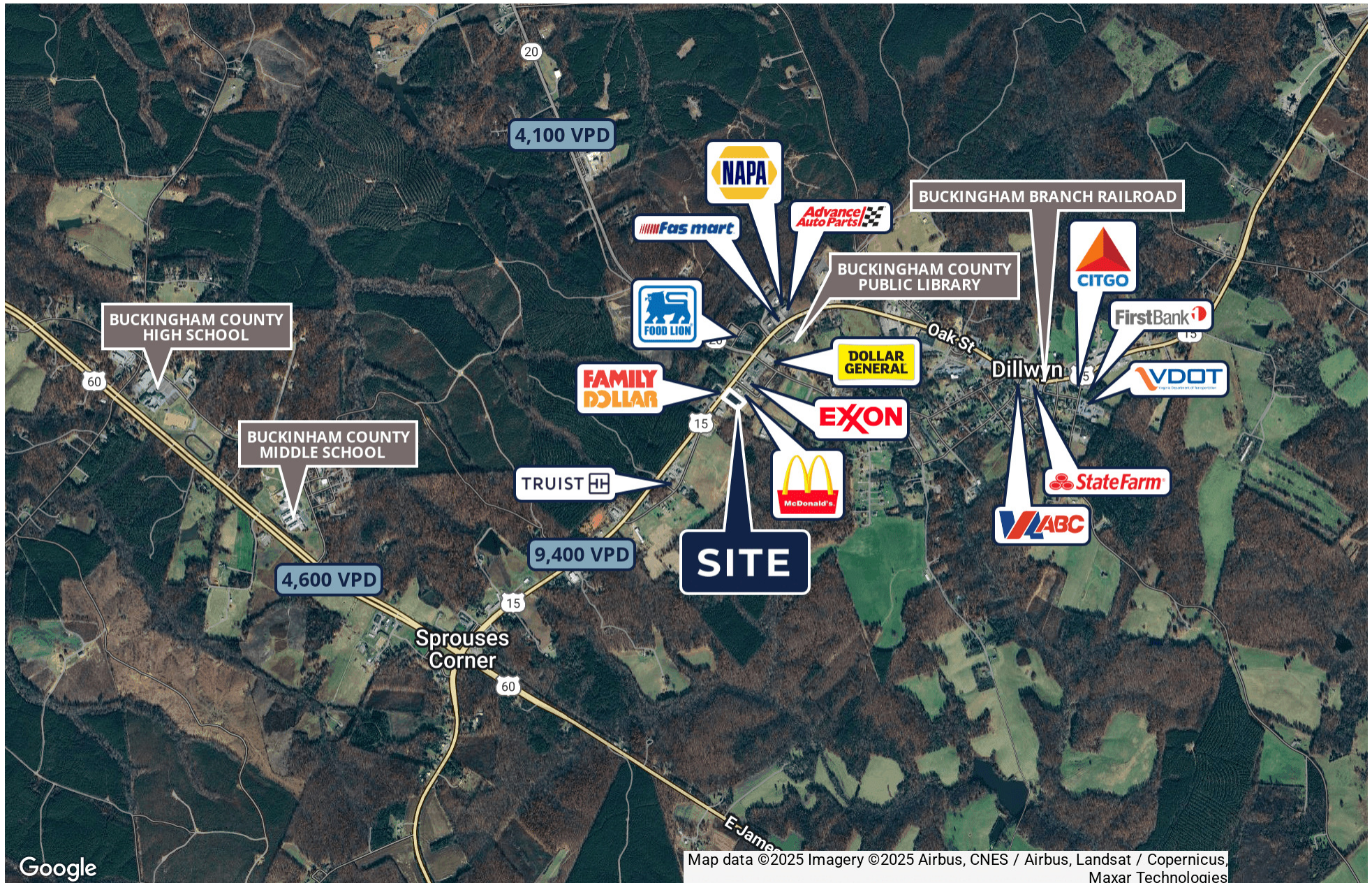
## CAMRYN STATION

15960 North James Madison Highway | Dillwyn, VA 23936



S.L. NUSBAUM

REALTY CO.





# CONTACT INFORMATION

## CAMRYN STATION

15960 North James Madison Highway | Dillwyn, VA 23936



**S.L. NUSBAUM**

REALTY CO.



### EMMA WILL

Associate  
C. 804.821.9042  
O. 804.508.7283  
ewill@slnusbaum.com

### ADAM SHOR

Senior Associate  
C. 804.332.3323  
O. 804.944.2437  
ashor@slnusbaum.com

### ANDREW THACKER

Vice President  
C. 804.357.6075  
O. 804.320.7600  
athacker@slnusbaum.com

### NATHAN SHOR

Senior Vice President | Partner  
C. 804.539.7404  
O. 804.944.2399  
nshor@slnusbaum.com

### COMMITMENT. INTEGRITY. EXCELLENCE. SINCE 1906.

Serving the Southeast and Mid-Atlantic region for well over a century, S.L. Nusbaum Realty Co. continues to provide a comprehensive experience for our clients and customers in all aspects of the multifamily and commercial real estate industry.

**CLICK HERE TO LEARN MORE**

**PROUD PARTNER**

**XTEAM**  
RETAIL ADVISORS

**CLICK HERE TO LEARN MORE**

### DISCLAIMER:

No warranty or representation, expressed or implied, is made to the accuracy or completeness of the information contained herein, and same is submitted subject to errors, omissions, change of price, rental or other conditions, withdrawal without notice, and to any special listing conditions imposed by the property owner(s). As applicable, we make no representation as to the condition of the property (or properties) in question or the property's (or properties') compliance with applicable laws, regulations, and codes.