

A collage of three photographs of the Pacific Corporate Plaza building. The top-left photo shows a curved entrance with the address 27081. The bottom-left photo shows another curved entrance with the address 27061. The larger right-side photo shows a long building facade with a curved entrance labeled 27071. The building features a mix of grey panels and large blue-tinted glass windows. The sky is clear blue.

# PACIFIC CORPORATE PLAZA

27061, 27071 & 27081 ALISO CREEK ROAD,  
ALISO VIEJO, CA 92656

**FOR LEASE**



**CUSHMAN &  
WAKEFIELD**

# 27061, 27071 & 27081 ALISO CREEK ROAD, ALISO VIEJO, CA 92656

Pacific Corporate Plaza is a unique three-building suburban office campus built in 1999 located within the 900-acre workplace community of Pacific Park in South Orange County. The project consists of an 8.5-acre site with three two-story office buildings totaling 124,710 square feet. The abundant amenities enhancing Pacific Corporate Plaza includes views of the Saddleback Valley and Mountain ranges in the distance and proximity to the 73 Toll Road and Interstate 5 Freeway, John Wayne Airport and the executive housing and destination retail of Newport Beach. Additionally, a fitness center, hiking and bicycle trails, and numerous shops and restaurants are all within walking distance.

## CAMPUS DETAILS



**124,710 RSF**  
Total Rentable Area



**3**  
Buildings



**2**  
Stories Each



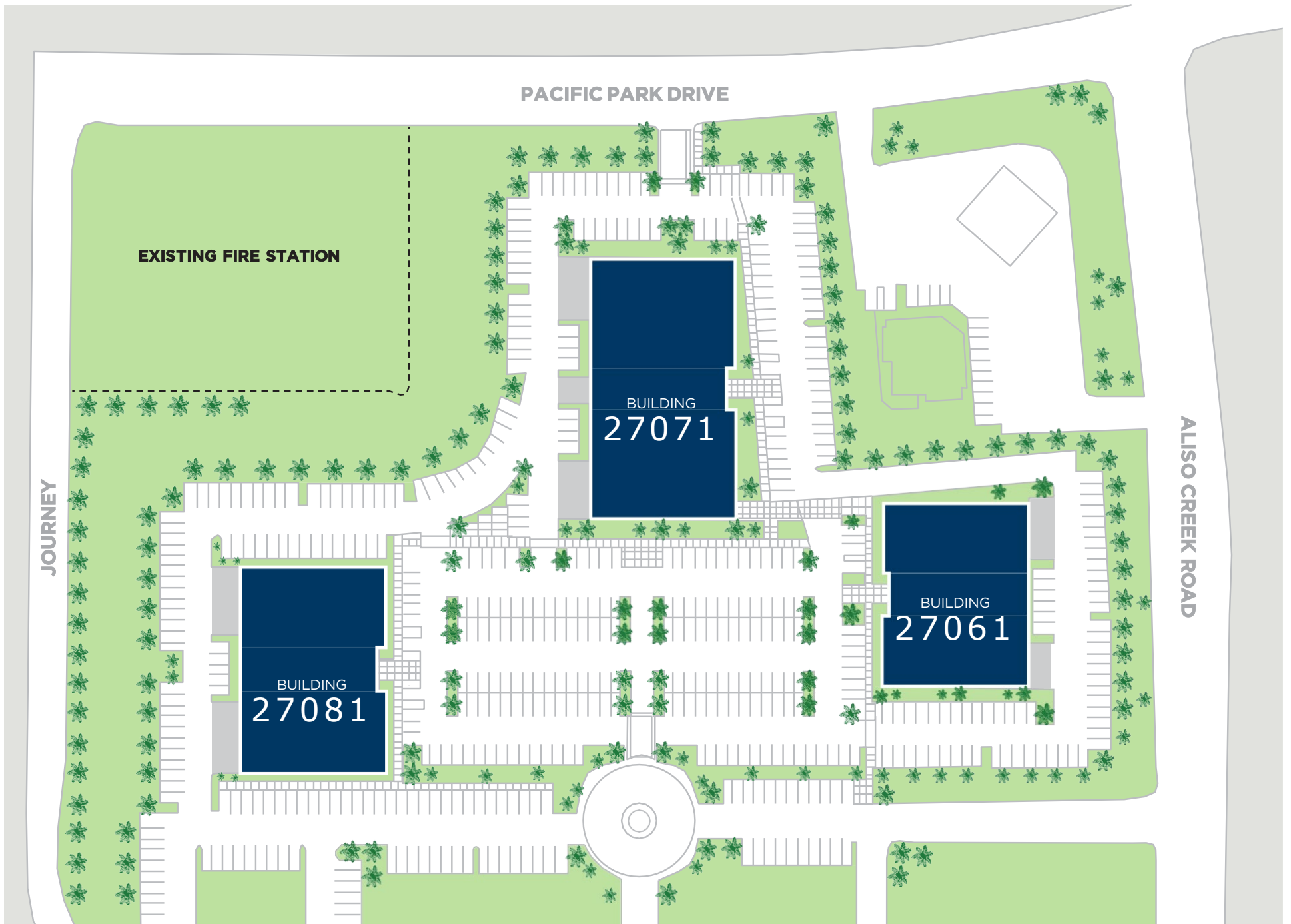
**±8.5 Acres**  
Site Area



**4/1,000 RSF**  
Surface Parking Ration



# SITE PLAN



**LAGUNA BEACH**

**NEWPORT BEACH**

**ALISO VIEJO PARKWAY**

**OC SHERIFF'S DEPARTMENT**

**CITY HALL**

**ALISO VIEJO PUBLIC LIBRARY**

**CITY LIGHTS AT TOWN CENTER APARTMENTS**

**ALISO VIEJO TOWN CENTER**

**EDWARDS ALISO VIEJO 20 & IMAX**

**RALPHS | TJ MAXX BARNES & NOBLES**

**MULTIPLE FAST FOOD & FINE DINING RESTAURANTS**

**JOURNEY**

**PACIFIC PARK DRIVE**

**PACIFIC CORPORATE PLAZA**  
27061, 27071 & 27081 ALISO CREEK ROAD,  
ALISO VIEJO, CA 92656

**SHELL GAS STATION**

**24 HOUR FITNESS**

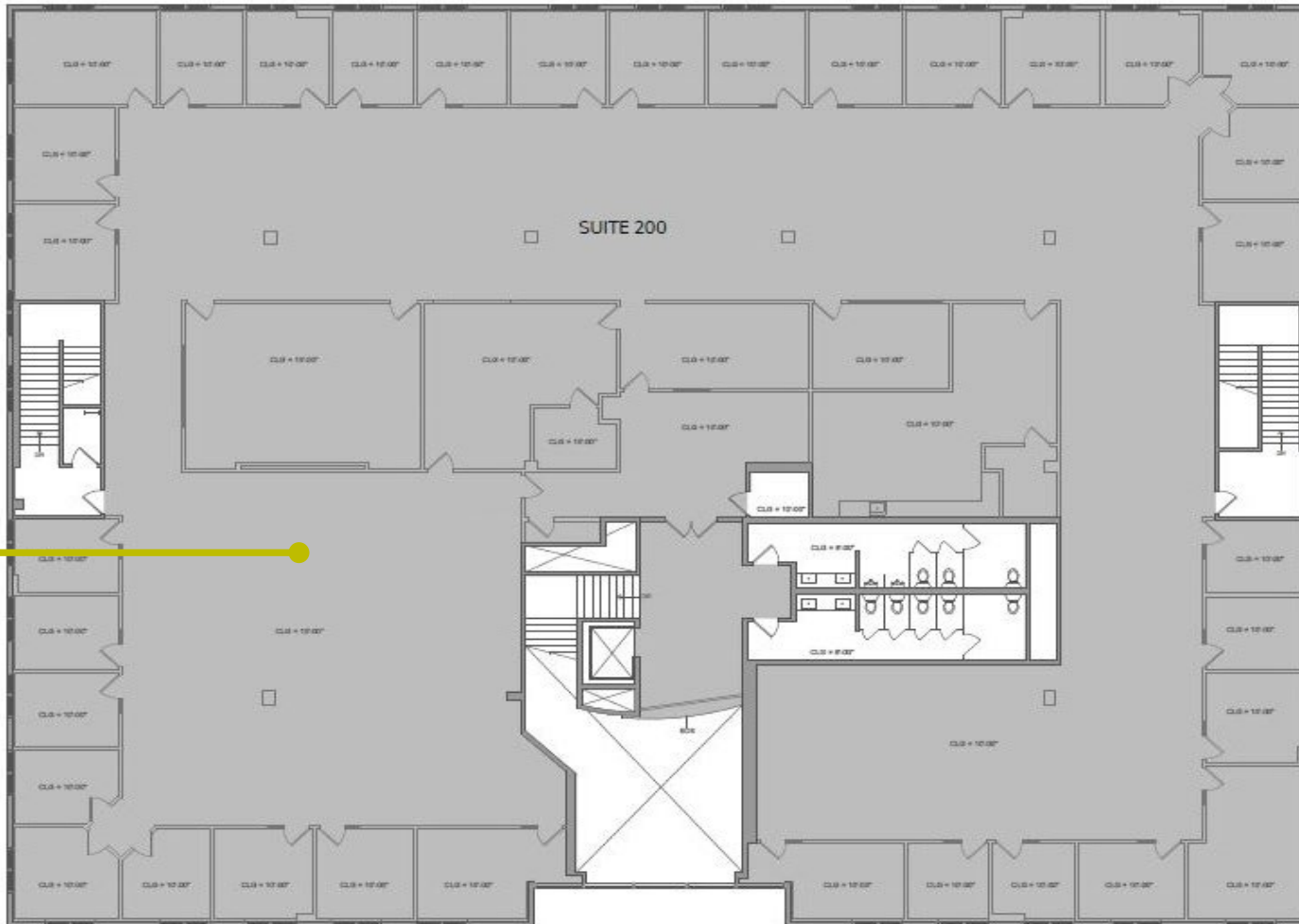
**ALISO CREEK ROAD**

**CANYON VILLAS**

# PACIFIC CORPORATE PLAZA

27061, 27071 & 27081 ALISO CREEK ROAD, ALISO VIEJO, CA 92656

27061 Aliso Creek Road  
Second Floor  
17,470 SF



**AVAILABLE**  
Suite 200: 17,477 SF

**CHRIS BOSLEY**  
Executive Managing  
Director 949.955.7646  
[chris.bosley@cushwake.com](mailto:chris.bosley@cushwake.com)  
Lic. # 01304116

**RAYMOND THAGARD**  
Senior Associate  
949.955.7655  
[raymond.thagard@cushwake.com](mailto:raymond.thagard@cushwake.com)  
Lic. # 01923969

**ALEXANDRIA DORMAN**  
Brokerage Coordinator  
949.955.7651  
[alexandria.dorman@cushwake.com](mailto:alexandria.dorman@cushwake.com)

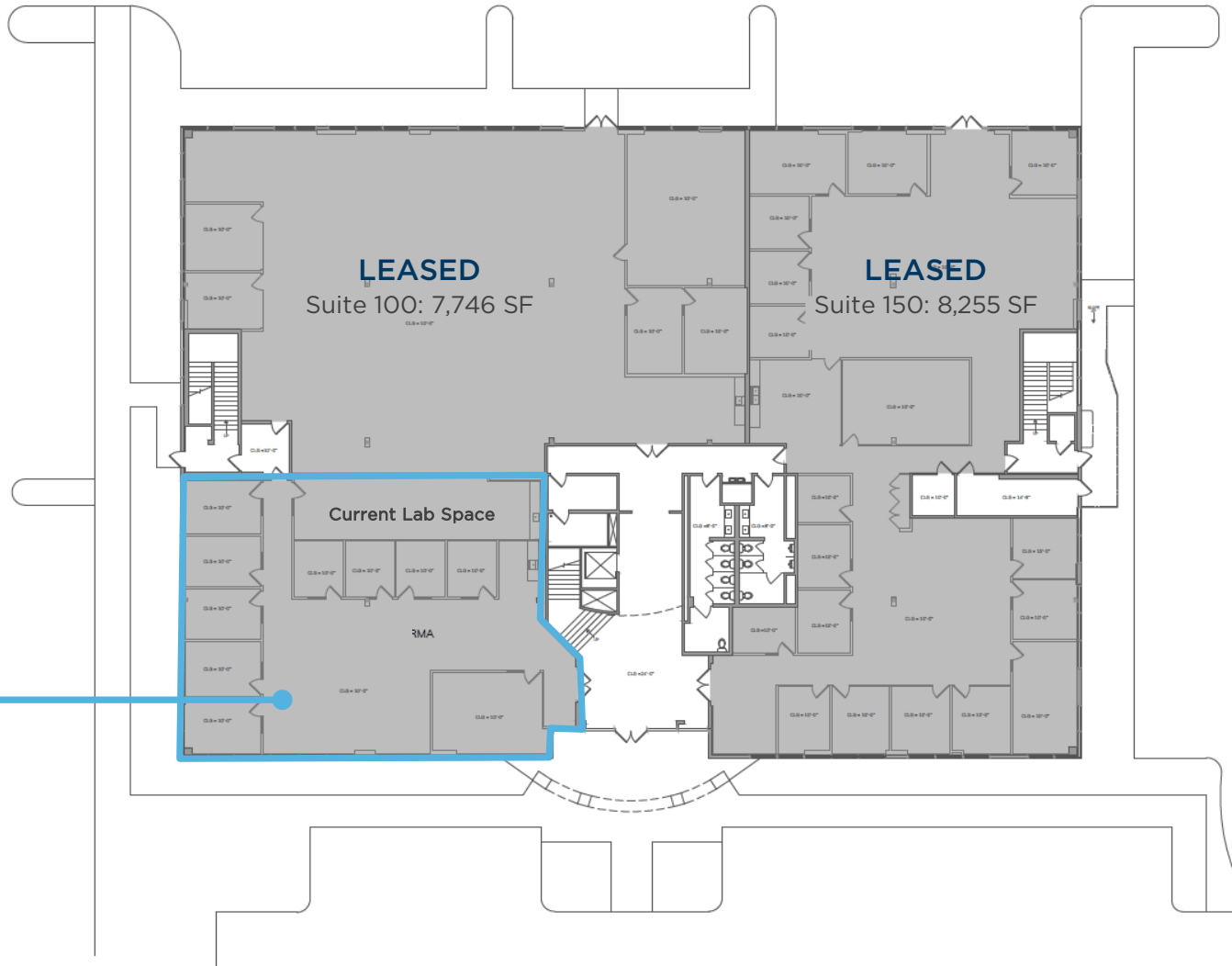
18111 Von Karman Avenue, Suite 1000  
Irvine, CA 92612  
[cushmanwakefield.com](http://cushmanwakefield.com)



# PACIFIC CORPORATE PLAZA

27061, 27071 & 27081 ALISO CREEK ROAD, ALISO VIEJO, CA 92656

27081 Aliso Creek Road  
Ground Floor  
20,581 SF



**AVAILABLE  
7/2024 (EST.)**  
Suite 125: 4,580 SF

**CHRIS BOSLEY**  
Executive Managing  
Director 949.955.7646  
[chris.bosley@cushwake.com](mailto:chris.bosley@cushwake.com)  
Lic. # 01304116

**RAYMOND THAGARD**  
Senior Associate  
949.955.7655  
[raymond.thagard@cushwake.com](mailto:raymond.thagard@cushwake.com)  
Lic. # 01923969

**ALEXANDRIA DORMAN**  
Brokerage Coordinator  
949.955.7651  
[alexandria.dorman@cushwake.com](mailto:alexandria.dorman@cushwake.com)

18111 Von Karman Avenue, Suite 1000  
Irvine, CA 92612  
[cushmanwakefield.com](http://cushmanwakefield.com)

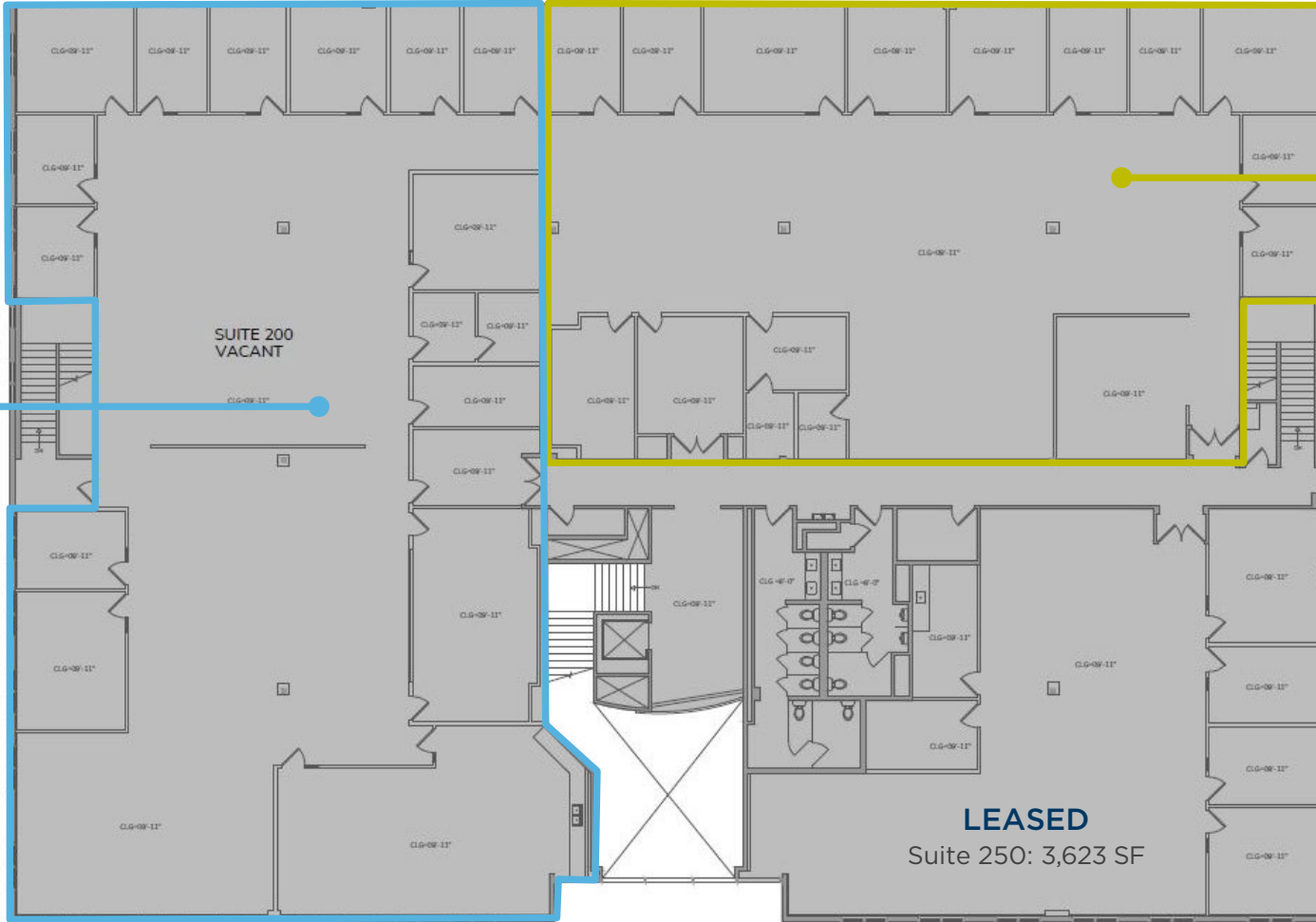


# PACIFIC CORPORATE PLAZA

27061, 27071 & 27081 ALISO CREEK ROAD, ALISO VIEJO, CA 92656

27081 Aliso Creek Road  
Second Floor  
20,159 SF

**AVAILABLE  
1/2024 (EST.)**  
Suite 200: 9,319 SF



**AVAILABLE**  
Suite 225: 7,217 SF

**LEASED**  
Suite 250: 3,623 SF

**CHRIS BOSLEY**  
Executive Managing  
Director 949.955.7646  
[chris.bosley@cushwake.com](mailto:chris.bosley@cushwake.com)  
Lic. # 01304116

**RAYMOND THAGARD**  
Senior Associate  
949.955.7655  
[raymond.thagard@cushwake.com](mailto:raymond.thagard@cushwake.com)  
Lic. # 01923969

**ALEXANDRIA DORMAN**  
Brokerage Coordinator  
949.955.7651  
[alexandria.dorman@cushwake.com](mailto:alexandria.dorman@cushwake.com)

18111 Von Karman Avenue, Suite 1000  
Irvine, CA 92612  
[cushmanwakefield.com](http://cushmanwakefield.com)



# PACIFIC CORPORATE PLAZA

27061, 27071 & 27081 ALISO CREEK ROAD,  
ALISO VIEJO, CA 92656

For more information,  
please contact:

**CHRIS BOSLEY**

+1 949 955 7646

[chris.bosley@cushwake.com](mailto:chris.bosley@cushwake.com)

Lic. 01304116

**RAYMOND THAGARD**

+1 949 955 7655

[raymond.thagard@cushwake.com](mailto:raymond.thagard@cushwake.com)

Lic. 01923969

**ALEXANDRIA DORMAN**

+1 949 955 7651

[alexandria.dorman@cushwake.com](mailto:alexandria.dorman@cushwake.com)