

# Lake Jeanette Office Park Condo

3816 North Elm Street, Suite C (Unit 402) | Greensboro, NC 27455



- ◆ Available For Sale
- ◆ 1,830 SF *(Per Guilford County Records)*
- ◆ Five Offices (Two with Windows)
- ◆ Large Training / Conference
- ◆ Break Room with Sink
- ◆ Front Door Parking
- ◆ Call For More Details

A professional office condo conveniently located in the Lake Jeanette Office Park right off the I-840 North Elm exit.

This unit is located next to Allstate Insurance, Edward Jone, and Navigon Financial. Other occupants in the Office Park include medical and dental offices.

It is located minutes from The Village at Elm mixed use retail development which includes retailers such as Harris Teeter, Epic Chophouse, and Chase Bank.



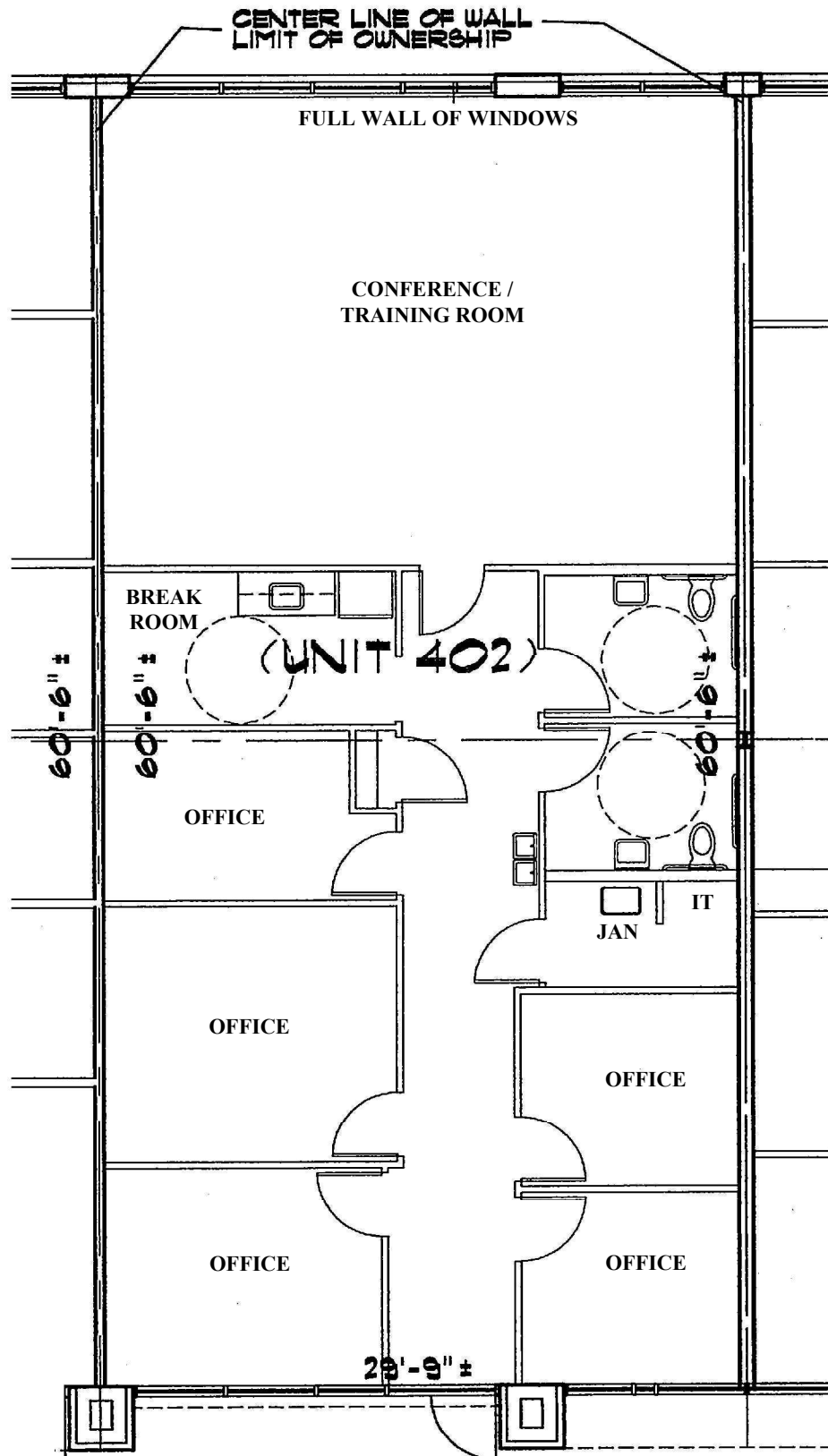
**JJ Joubran, CCIM**

(336) 270-9775

JJ@JoubranCommercial.com

# 3816 North Elm Street, Suite C

## Floor Plan



*Contact:*

JJ Joubran, CCIM

Joubran Commercial Properties

(336) 270-9775

[JJ@JoubranCommercial.com](mailto:JJ@JoubranCommercial.com)

[www.JoubranCommercial.com](http://www.JoubranCommercial.com)

# Lake Jeanette Office Park Condo

3816 North Elm Street, Suite C (Unit 402) | Greensboro, NC 27455



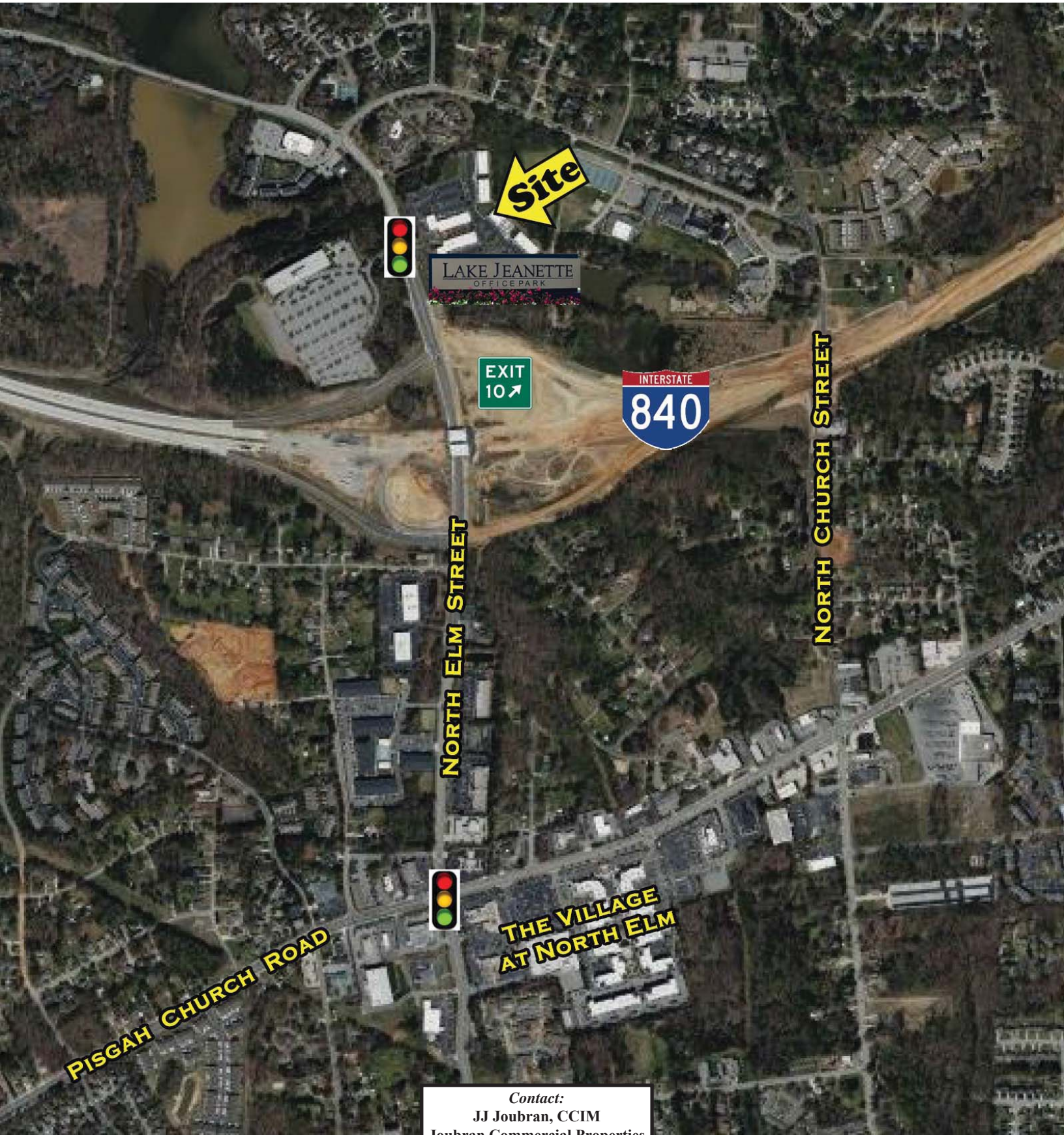
**JJ Joubran, CCIM**

(336) 270-9775

JJ@JoubranCommercial.com



# 3816 N. Elm Street Aerial Overview



*Contact:*  
JJ Joubran, CCIM  
Joubran Commercial Properties  
(336) 270-9775  
[JJ@JoubranCommercial.com](mailto:JJ@JoubranCommercial.com)  
[www.JoubranCommercial.com](http://www.JoubranCommercial.com)