

PRIME OFFICE SPACE IN THE HEART OF GREAT NECK

107 Northern Blvd, Suite 202
GREAT NECK, NY 11021



ROZITA SOOMEKH

Licensed Real Estate Broker

Rozita.Soomekh@elliman.com

516.205.2279



550 SMITHTOWN BYPASS STE. 117 SMITHTOWN, NY 11787 631.858.2405 © 2023 DOUGLAS ELLIMAN COMMERCIAL OF LI, LLC. ALL MATERIAL PRESENTED HEREIN IS INTENDED FOR INFORMATION PURPOSES ONLY. WHILE THIS INFORMATION IS BELIEVED TO BE CORRECT, IT IS REPRESENTED SUBJECT TO ERRORS, OMISSIONS, CHANGES OR WITHDRAWAL WITHOUT NOTICE. ALL PROPERTY INFORMATION, INCLUDING, BUT NOT LIMITED TO SQUARE FOOTAGE, ROOM COUNT, ZONING IN THE LISTING SHOULD BE VERIFIED BY YOUR OWN ATTORNEY, ARCHITECT OR ZONING EXPERT. IF YOUR PROPERTY IS CURRENTLY LISTED WITH ANOTHER REAL ESTATE BROKER, PLEASE DISREGARD THIS OFFER. IT IS NOT OUR INTENTION TO SOLICIT THE OFFERINGS OF OTHER REAL ESTATE BROKERS. WE COOPERATE WITH THEM FULLY. EQUAL HOUSING OPPORTUNITY.



OFFICE SPACE AVAILABLE FOR LEASE

\$ 2,200/ Monthly

Welcome to Suite 202 at 107 Northern Blvd, where modern elegance meets functionality in the heart of Great Neck, NY. This office space is approximately 700 SF and boasts a brand-new, high-end buildout, offering two rooms tailored to meet the demands of today's professionals. One room features a convenient sink, ideal for medical or cosmetic practices, while the versatile waiting room area ensures a welcoming atmosphere for clients and guests. Situated in a prime location, this suite provides easy access to essential amenities, restaurants, and transportation hubs. With a monthly rent of \$2,200, seize the opportunity to elevate your professional environment and schedule a viewing today to unlock the full potential of your business.

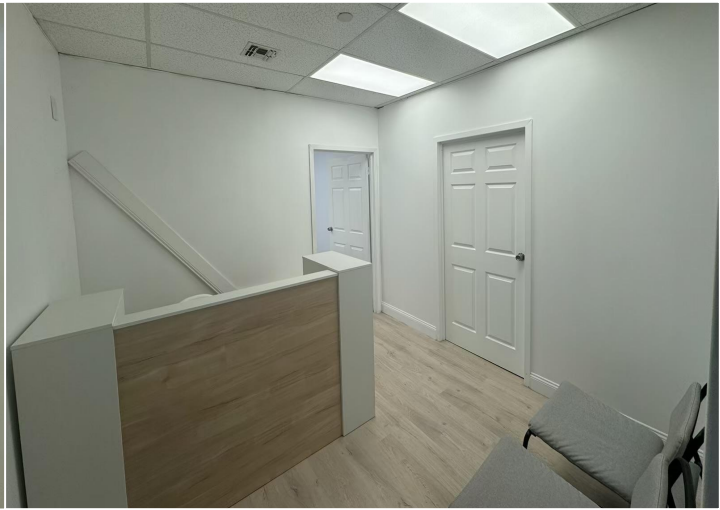
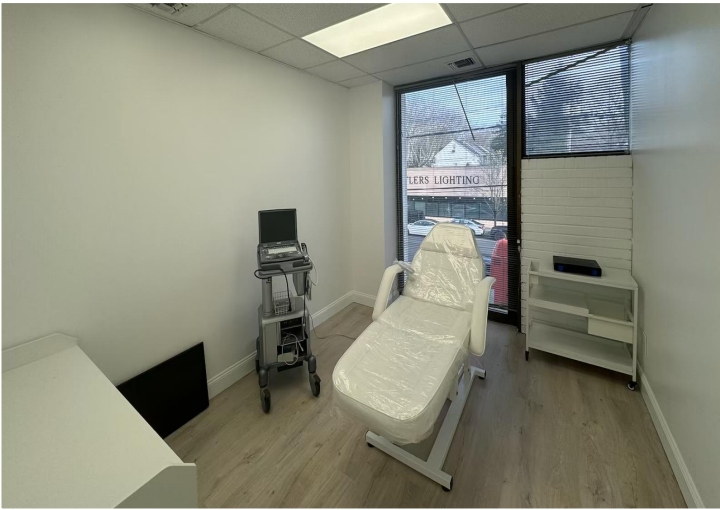
SIZE: Approx. 700 SF Rentable

PRICE: \$2,200 per month

UTIL's: \$3.50 / month

PARKING AVAILABLE

BASE TAX INCLUDED



ROZITA SOOMEKH

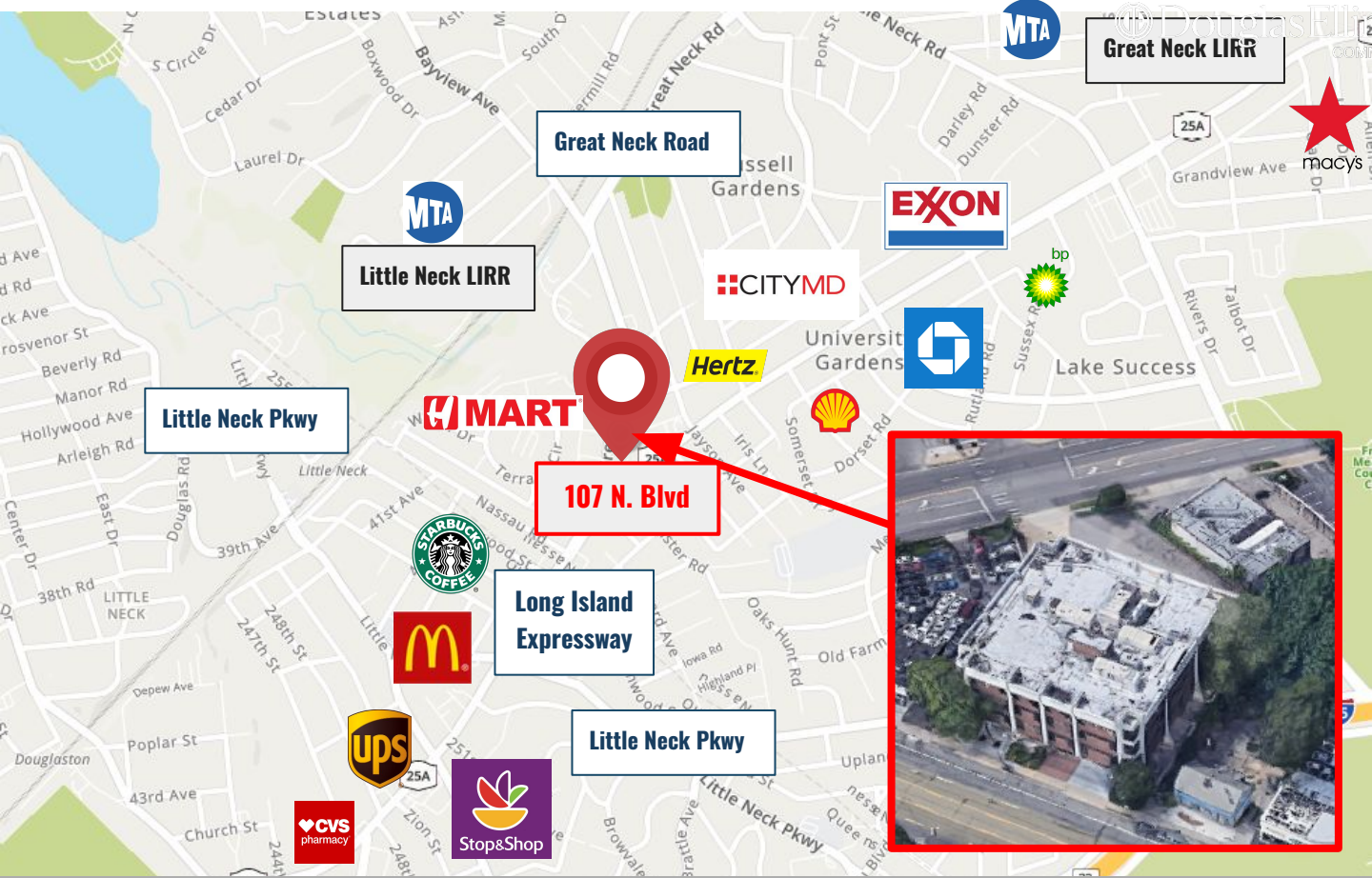
Licensed Real Estate Broker

Rozita.Soomekh@elliman.com

516.205.2279



LOCATES ON A PRIME AREA



Population	1 Mile	2 Miles	3 Miles
Total Population	23,323	77,940	181,105
Average Age	45.2	46.8	43.4
Average Age (Male)	43.1	44.3	41.0
Average Age (Female)	47.6	48.7	45.5
Households & Income	1 Mile	2 Miles	3 Miles
Total Households	9,610	32,206	69,594
# of Persons per HH	2.4	2.4	2.6
Average HH Income	\$120,877	\$119,993	\$110,067
Average House Value	\$666,066	\$621,661	\$592,223

GREAT NECK

NEW YORK

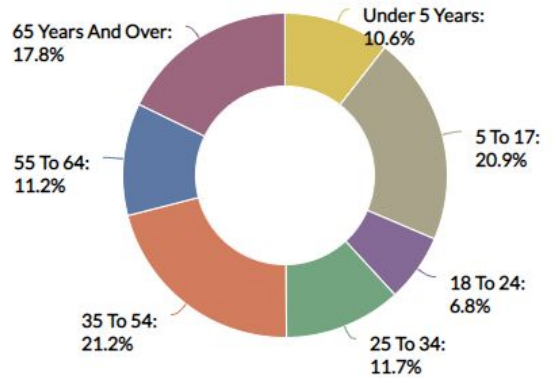


Great Neck is a region on Long Island, New York, that covers a peninsula on the North Shore and includes 9 villages, such as the villages of Great Neck, Great Neck Estates, Great Neck Plaza, Kings Point, and Russell Gardens, and a number of unincorporated areas, as well as an area south of the peninsula near Lake Success and the border territory of Queens.

TOTAL POPULATION

±11,000

Age Demographic



MEDIAN HOUSEHOLD INCOME



SCAN TO VIEW
ALL OUR LISTINGS

