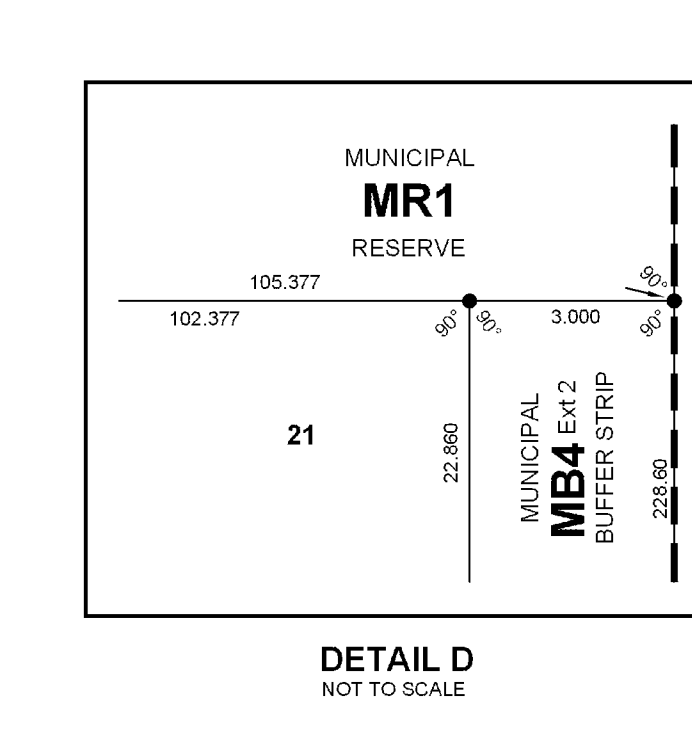
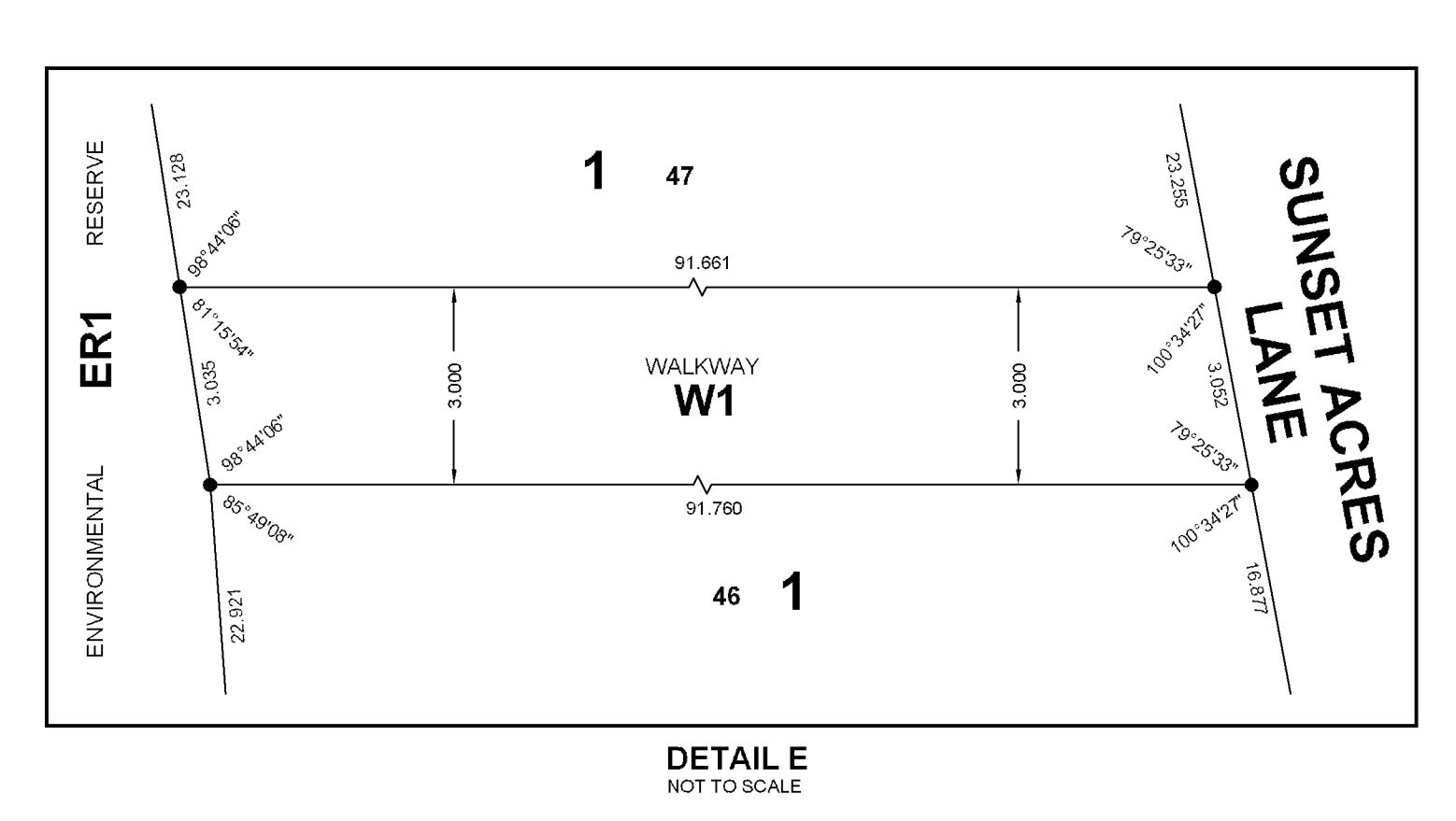
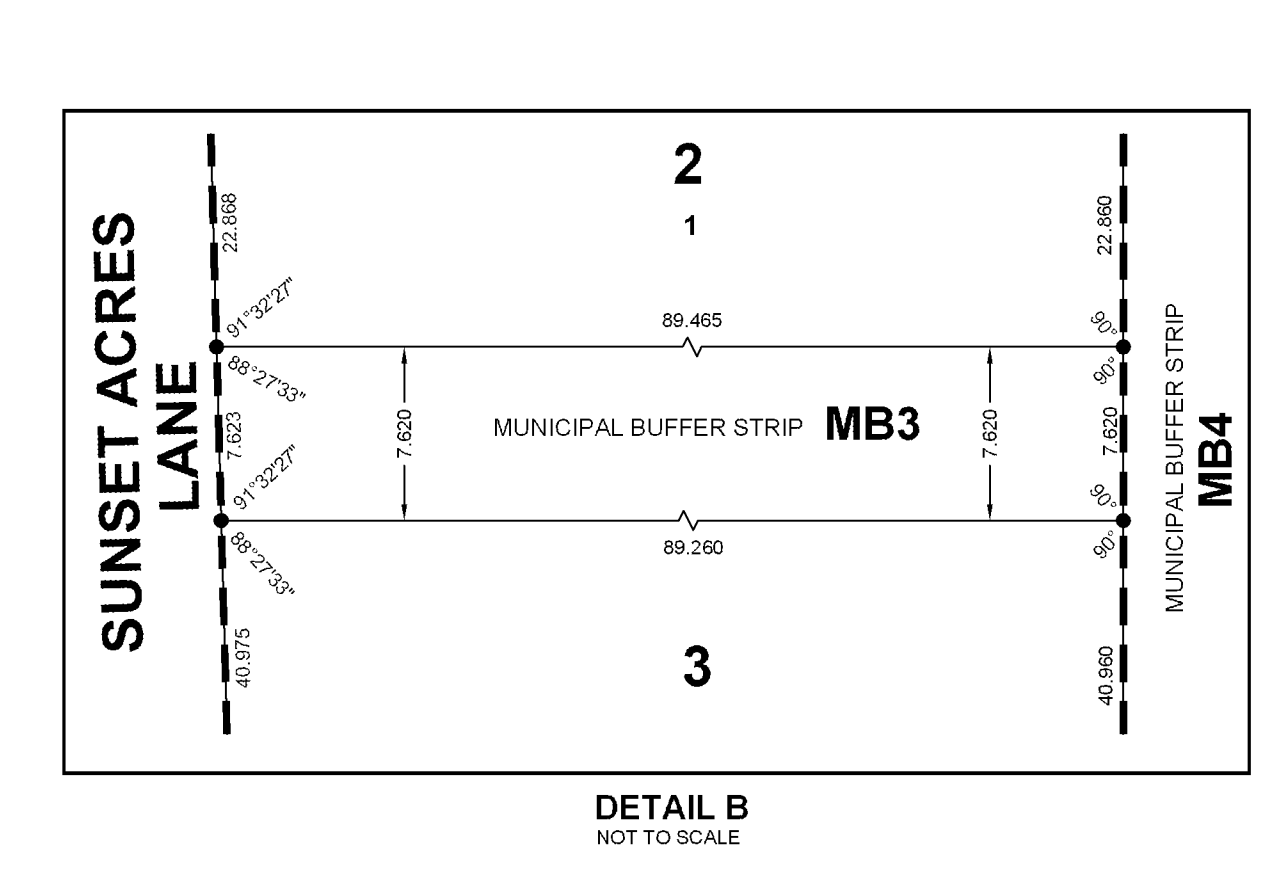
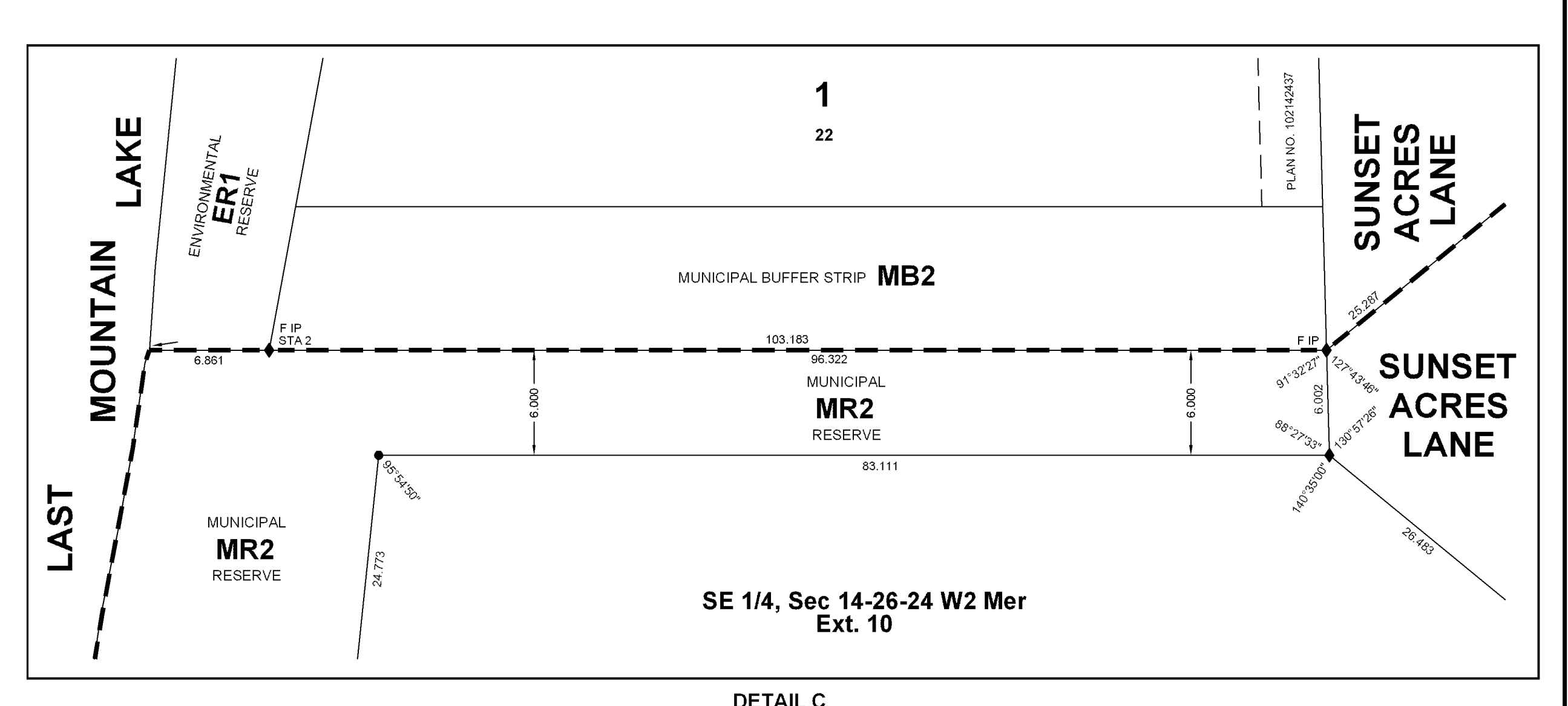


**SUNSET ACRES  
PHASE I STAGE II  
PLAN OF SURVEY**  
SHOWING  
**SURFACE SUBDIVISION**  
OF ALL OF  
**SE1/4 & SW1/4 LS 9 SEC 14,TWP 26, RGE 24, W2 Mer**  
AND PART OF  
**NE1/4 LS 9 & LS 16 SEC 14,TWP 26, RGE 24, W2 Mer**  
AND PART OF  
**SE1/4 SEC 14,TWP 26, RGE 24, W2 Mer**  
IN THE  
**R.M. OF LAST MOUNTAIN VALLEY No. 250  
SASKATCHEWAN**  
BY **L.W. McLEOD, S.L.S.**  
**NOVEMBER, 2010 - MAY, 2014**  
SCALE= 1:1000

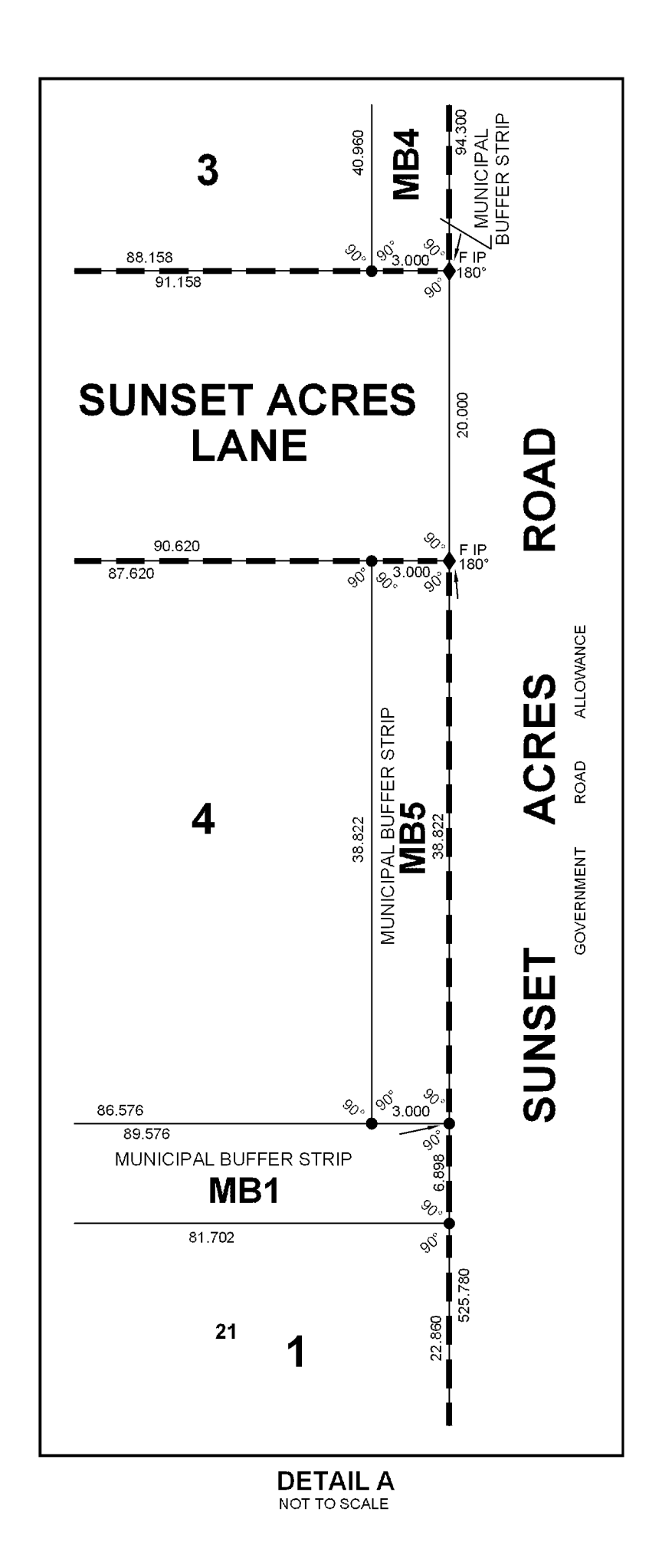
**LEGEND:**  
Area to be approved is outlined with a heavy dashed line.  
Measurements are in metres and decimals thereof.  
All parcels within the line of approval have Elevation 0 unless otherwise shown.  
Standard iron pins found are shown thus .....  
Standard iron pins plotted and marked "S234" are shown thus .....  
Standard road allowances on this plan are 20.117 metres in width.  
The "Bank" is taken as the boundary, for the definition of Bank see Section 32 of  
The Land Surveyors Act 2000 Regulations.  
The Environmental Reserve to be issued to the R.M. of Last Mountain Valley No. 250  
Box 100  
Crows' Nest,  
S0G 1Z0



NW 1/4, Sec 13-26-24 W2 Mer



STA	NORTHING	EASTING
1	5010.325	4853.147
2	5000.007	4750.326
3	4908.238	4834.675
4	4816.786	4919.675
5	5010.046	4859.646
6	5012.116	4852.708
7	5016.689	4858.648
8	5027.839	4860.832
9	5036.722	4859.845
10	5042.308	4852.589
11	5050.027	4851.388
12	5057.180	4859.983
13	5064.439	4856.738
14	5071.787	4859.509
15	5079.380	4859.208
16	5086.002	4858.220
17	5088.615	4854.875
18	5100.768	4853.238
19	5105.844	4858.848
20	5115.029	4848.728
21	5122.000	4857.448
22	5128.007	4848.259
23	5138.167	4848.988
24	5142.348	4847.007
25	5160.832	4848.531
26	5165.894	4857.648
27	5168.843	4847.738
28	5172.784	4848.938
29	5178.501	4848.332
30	5186.022	4848.188
31	5188.417	4849.400
32	5201.488	4848.800
33	5208.700	4859.489
34	5215.772	4851.432
35	5223.100	4853.433
36	5231.147	4853.118
37	5237.761	4854.207
38	5244.761	4854.207
39	5250.009	4853.212
40	5256.146	4853.673
41	5268.427	4853.158
42	5273.303	4853.589
43	5280.899	4854.672
44	5287.720	4855.044
45	5298.448	4853.375
46	5302.277	4842.738
47	5308.524	4853.738
48	5310.520	4853.004
49	5322.880	4853.718
50	5331.422	4846.715
51	5338.982	4851.428
52	5346.800	4853.800
53	5352.734	4859.846
54	5358.843	4853.208
55	5362.035	4871.000
56	5372.892	4853.433
57	5381.435	4872.999
58	5388.734	4874.300
59	5396.700	4874.300
60	5403.375	4873.548
61	5410.000	4859.208
62	5417.623	4873.504
63	5424.872	4853.433
64	5431.645	4851.175
65	5439.130	4842.478
66	5446.975	4853.689
67	5453.700	4854.848
68	5460.907	4853.500
69	5468.004	4847.328
70	5475.322	4848.718
71	5482.931	4859.800
72	5489.831	4851.008
73	5495.915	4852.128
74	5504.706	4853.711
75	5512.000	4853.433
76	5519.405	4852.072
77	5526.208	4848.473
78	5530.248	4853.718
79	5533.989	4844.983
80	5538.338	4853.718
81	5542.963	4853.158
82	5547.989	4853.689
83	5552.800	4853.718
84	5557.303	4848.877
85	5561.500	4853.000
86	5565.400	4853.000
87	5569.100	4853.000
88	5572.600	4853.000
89	5575.900	4853.000
90	5579.000	4853.000
91	5582.000	4853.000
92	5584.900	4853.000
93	5587.700	4853.000
94	5590.400	4853.000
95	5593.000	4853.000
96	5595.500	4853.000
97	5597.900	4853.000
98	5600.200	4853.000
99	5602.400	4853.000
100	5604.500	4853.000
101	5606.500	4853.000
102	5608.400	4853.000
103	5610.200	4853.000
104	5611.900	4853.000
105	5613.500	4853.000
106	5615.000	4853.000
107	5616.400	4853.000
108	5617.700	4853.000
109	5618.900	4853.000
110	5620.000	4853.000
111	5621.000	4853.000
112	5621.900	4853.000
113	5622.700	4853.000
114	5623.400	4853.000
115	5624.000	4853.000
116	5624.500	4853.000
117	5624.900	4853.000
118	5625.200	4853.000
119	5625.400	4853.000
120	5625.500	4853.000
121	5625.600	4853.000
122	5625.600	4853.000
123	5625.500	4853.000
124	5625.300	4853.000
125	5625.000	4853.000
126	5624.600	4853.000
127	5624.100	4853.000
128	5623.500	4853.000
129	5622.800	4853.000
130	5622.000	4853.000
131	5621.100	4853.000
132	5620.000	4853.000
133	5618.700	4853.000



SW 1/4, Sec 13-26-24 W2 Mer