

Freestanding Opportunity

806 Route 17 N, Ramsey, NJ



15,000 SF Available for Lease or Sale / 1.71 Acres
Located on heavily trafficked Route 17 N

David Townes
Managing Director
+1 917 993 5515
david.townes@jll.com

Alana Friedman
Vice President
+1 201 741 0990
alana.friedman@jll.com



Freestanding Opportunity

806 Route 17 N, Ramsey, NJ



Office Court of Ramsey
10 Acre Office Complex

MAVIS TIRE

McDonald's

Bolla Market

EXXON

17

103,452 VPD

15,000 SF Available for Lease or Sale / 1.71 Acres
Located on heavily trafficked Route 17 N

David Townes
Managing Director
+1 917 993 5515
david.townes@jll.com

Alana Friedman
Vice President
+1 201 741 0990
alana.friedman@jll.com



Property **Location**

- » Located directly between Lake Street and Franklin Turnpike exits
- » Ingress and egress from Route 17 North with traffic counts of 103,452 VPD
- » Bergen County

Retail **Availability**

- » 15,000 SF two-story building, 7,500 SF floors
- » 1.71 acres
- » 95 car parking spaces
- » 126' of frontage on Route 17 North
- » Excellent signage opportunity – 20' pylon
- » Located in the B-3 Highway Commercial zone

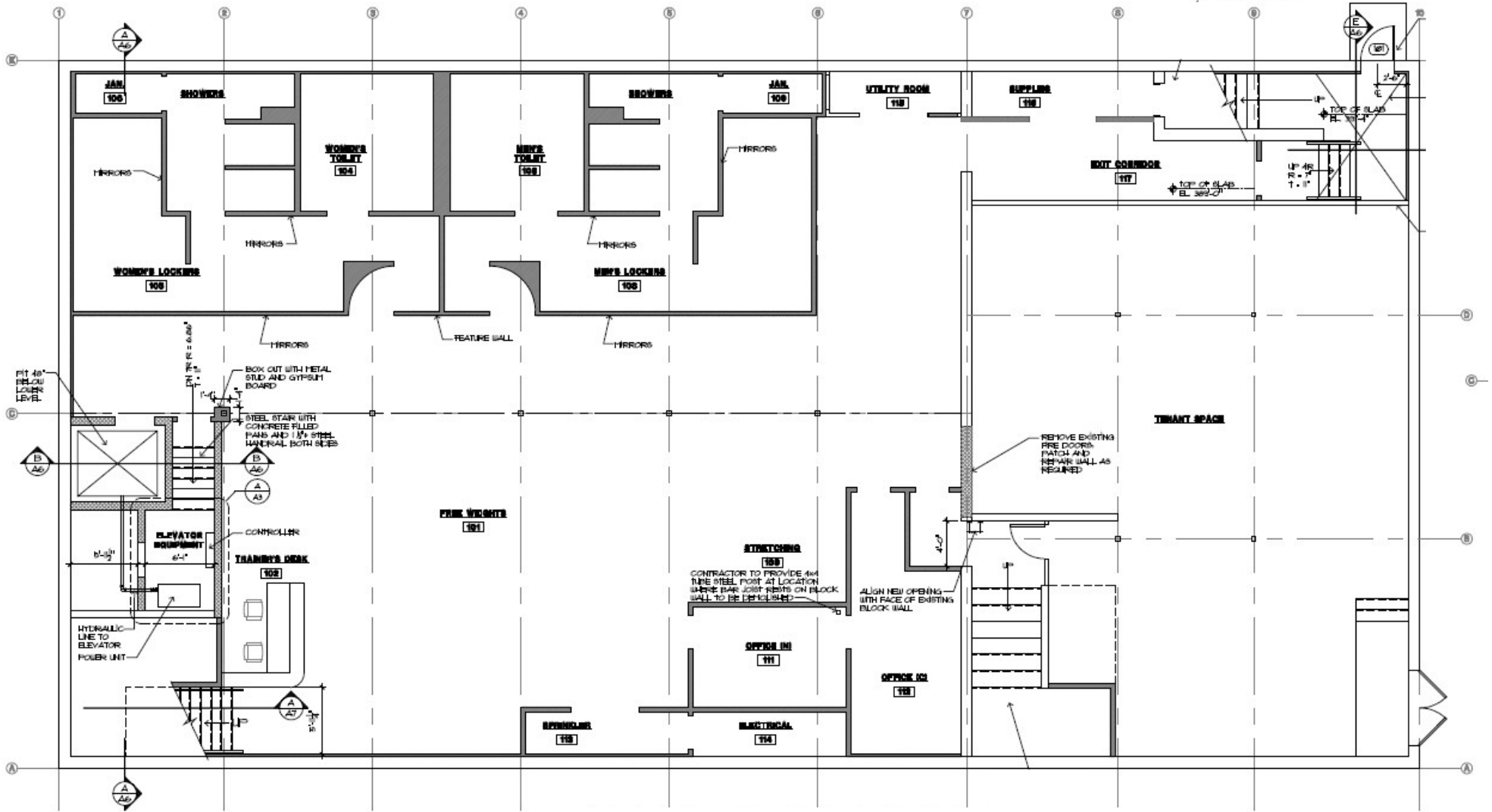
Asking Price

- » Upon request
- » Taxes: \$56,234.40 (2023)

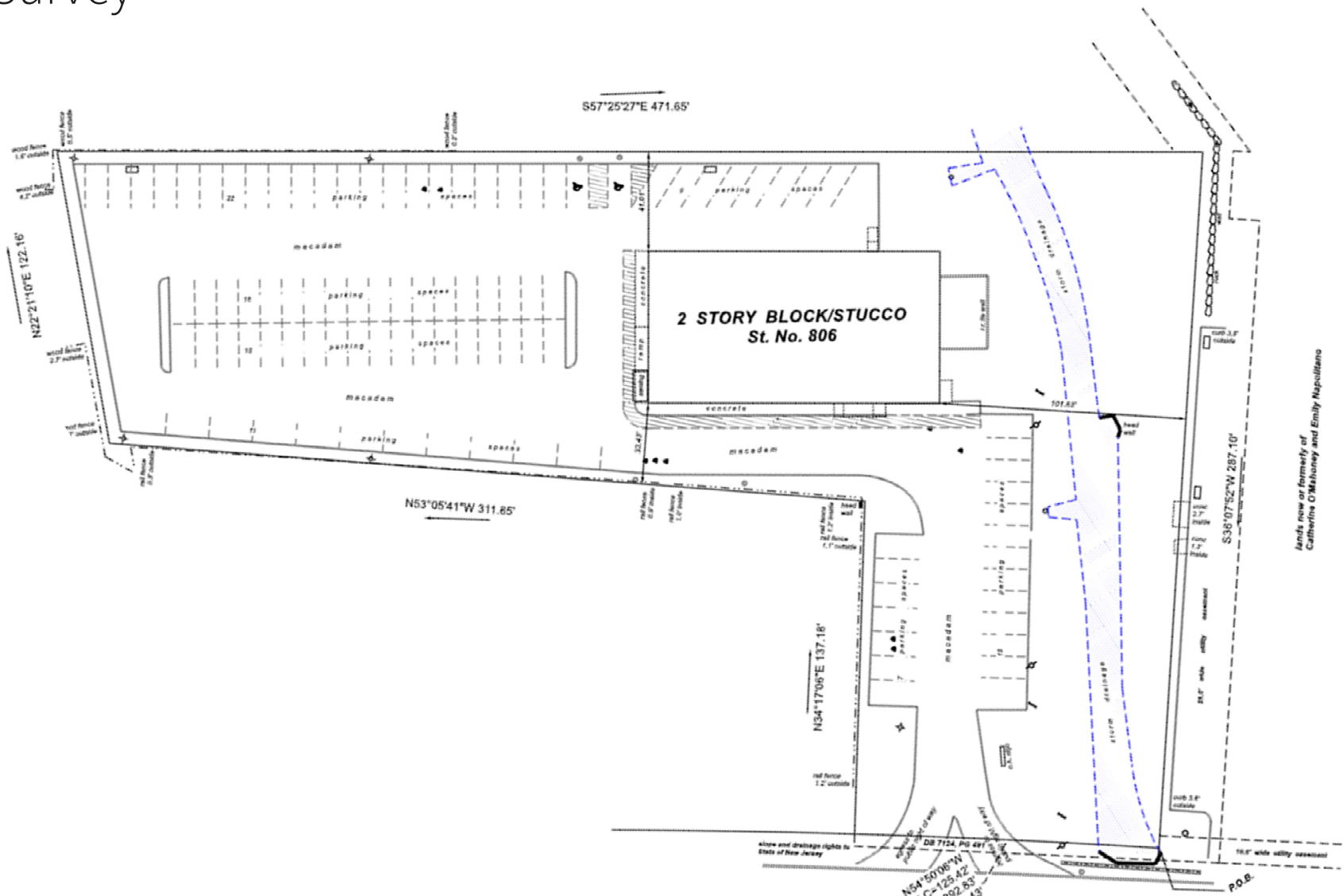
Trade Area **Tenants**



Floor Plan - Lower Level



Survey



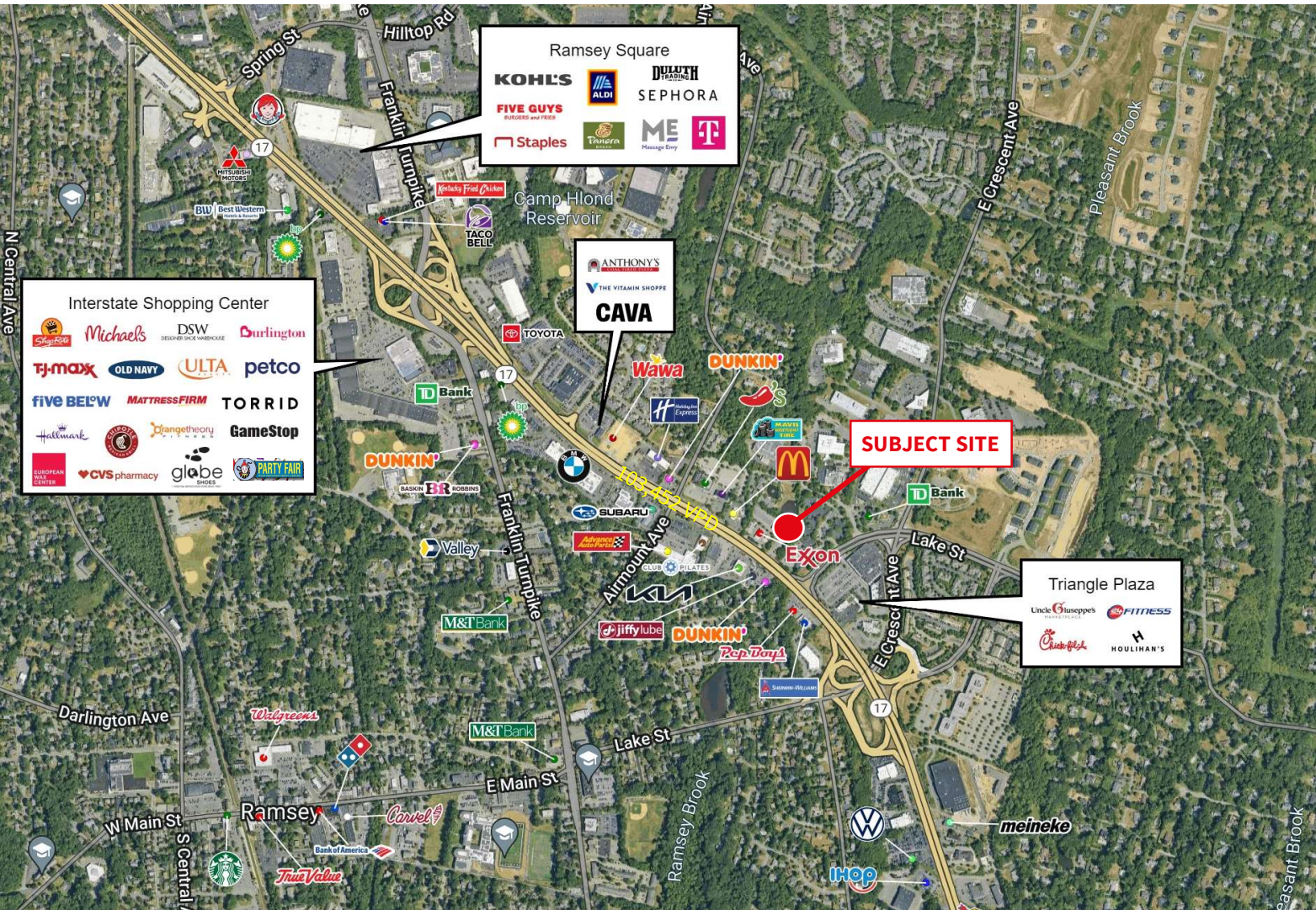
lands now or formerly of
Catherine O'Mahoney and Emily Napolitano

NEW JERSEY STATE HIGHWAY
Route No. 17 - West

DB 7124, Pg. 481
N54°50'08"W
LC=125.42
R=3892.85
A=125.43°
T=62.72'
D=1°50'46"



Market Aerial



Demographics



59,472

Population



\$134,918

Med. HH Income



33,058

Employees



3,139

Businesses

For more information contact:

David Townes

Managing Director

+1 917 993 5515

david.townes@jll.com

Alana Friedman

Vice President

+1 201 741 0990

alana.friedman@jll.com

Demographics taken within 3 miles Source: ESRI, 2023