

211 SCHERMERHORN STREET, BROOKLYN, NY 11201

FOR LEASE

2,600 – 5,680 SF NEW DEVELOPMENT RETAIL SPACE WITH GLASS FRONTAGE

Between Hoyt Street & Bond Street



SHLOMI BAGDADI
212.433.3355 x101
sb@tristatecr.com

LEO BEDA
212.433.3355 x103
leo.b@tristatecr.com

TRI STATE COMMERCIAL®

PROPERTY SUMMARY

LOCATION

Located in the Downtown Brooklyn neighborhood.

HIGHLIGHTS

- New Development
- Over 18,000 Residential Units are Under Development Within a 1/2 Mile

SPACE DETAILS

- Ground Floor: 5,680 SF
- Lower Level: 3,425 SF
- Divisions Available
- 12 FT Ceilings on the Ground Floor
- 13 FT Ceilings on the Lower Level
- Elevator Dedicated to The Retail Space
- Glass Frontage
- At the Base of a 48-Unit Condo Building

TRANSPORTATION

G A C Trains at Hoyt-Schermerhorn Street

2 3 Trains at Hoyt Street

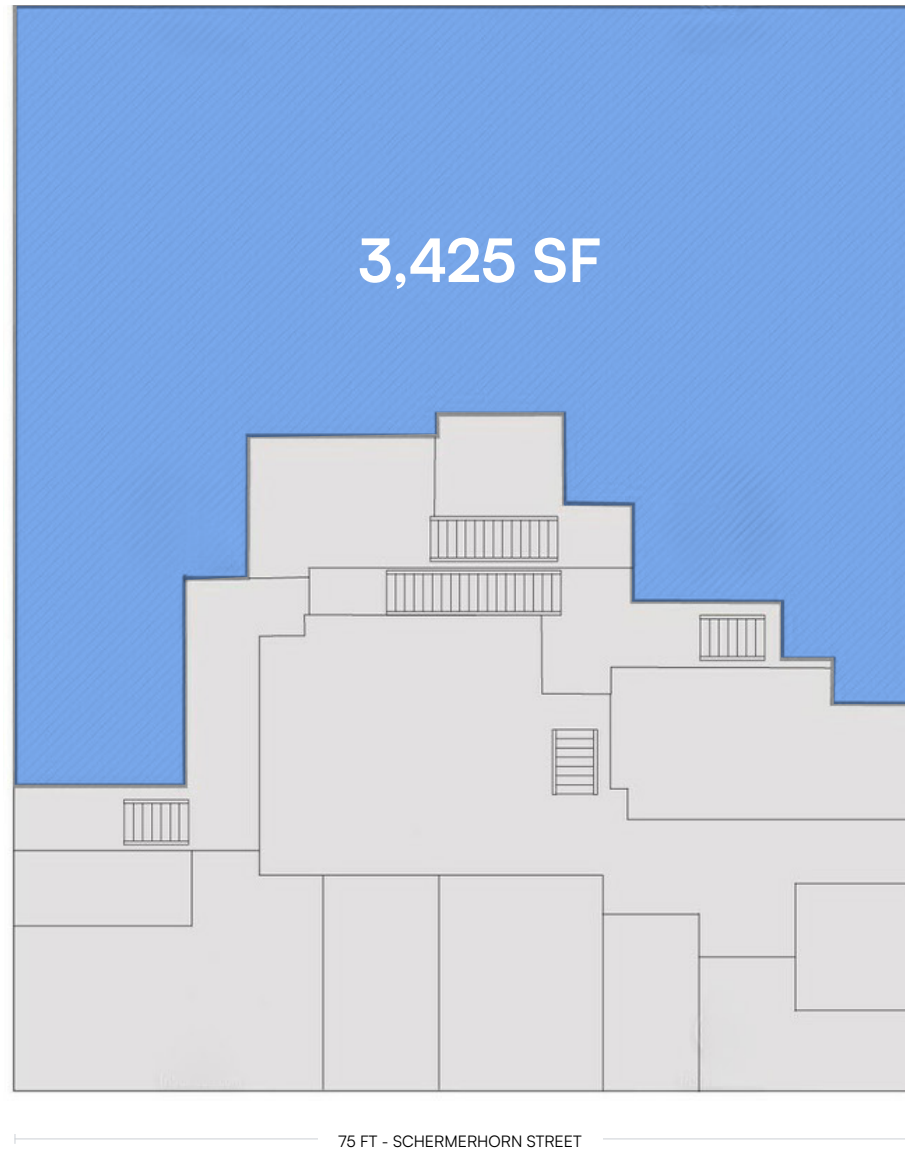
B67 B41 B38 B52 B45 B26 B25 B63 B62 Bus Lines

NEIGHBORS

Chhipotle Mexican Grill, Subway, CVS Pharmacy, Papa John's Pizza, Bank of America, Walgreen's Pharmacy, McDonald's, Foot Locker, Chase Bank, TD Bank, Starbucks, Domino's Pizza, Burger King, Dunkin', Raising Cane's, Popeyes Louisiana Kitchen, Apple Store, Smash Burger, and more!



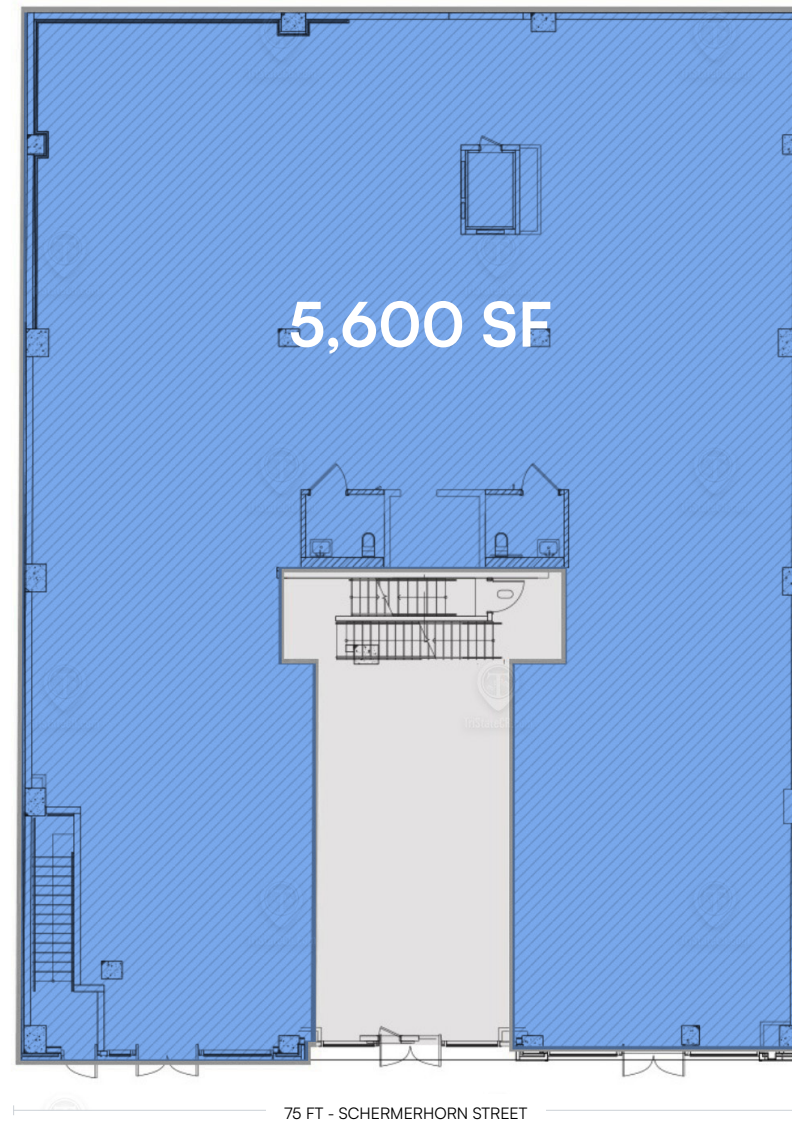
FLOOR PLANS



LOWER LEVEL

All square footages are approximate

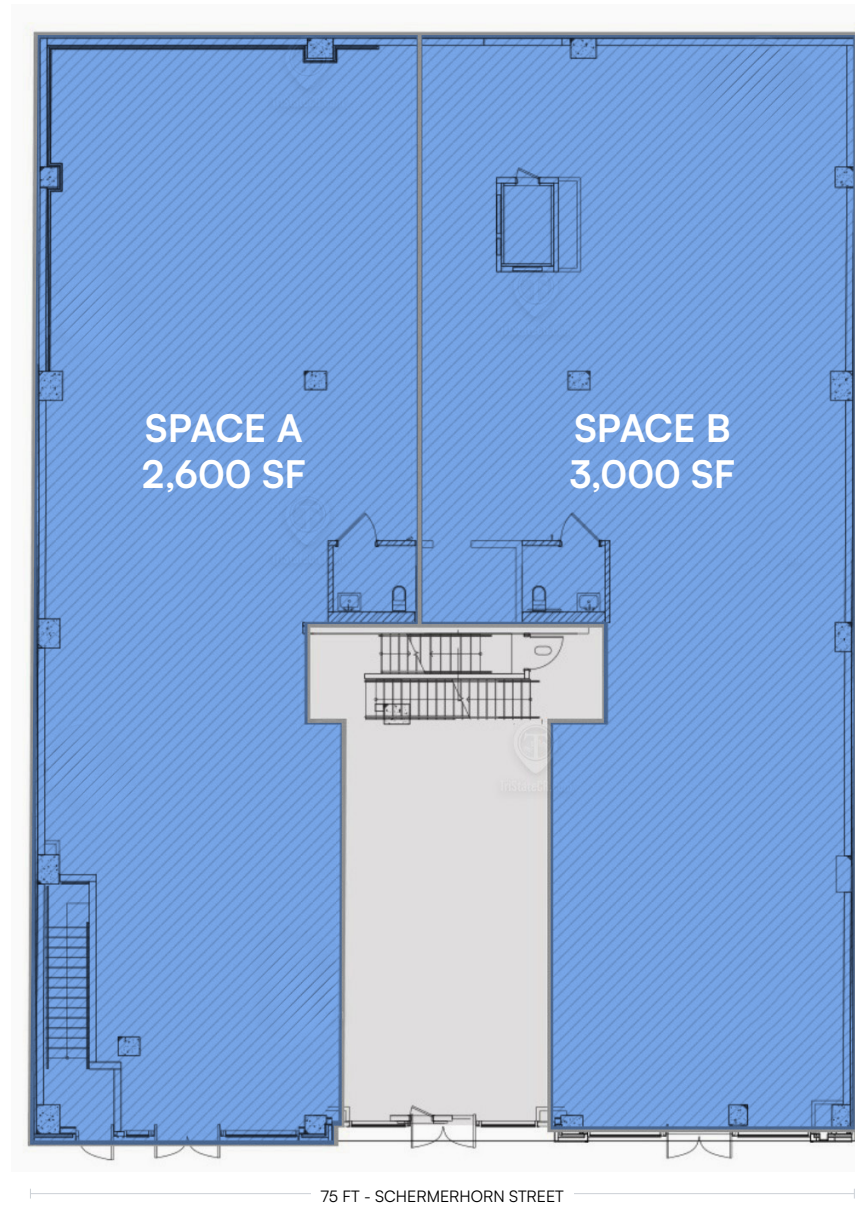
FLOOR PLANS



FIRST FLOOR - TOTAL SPACE

All square footages are approximate

FLOOR PLANS



FIRST FLOOR - DIVISION OPTIONS

All square footages are approximate

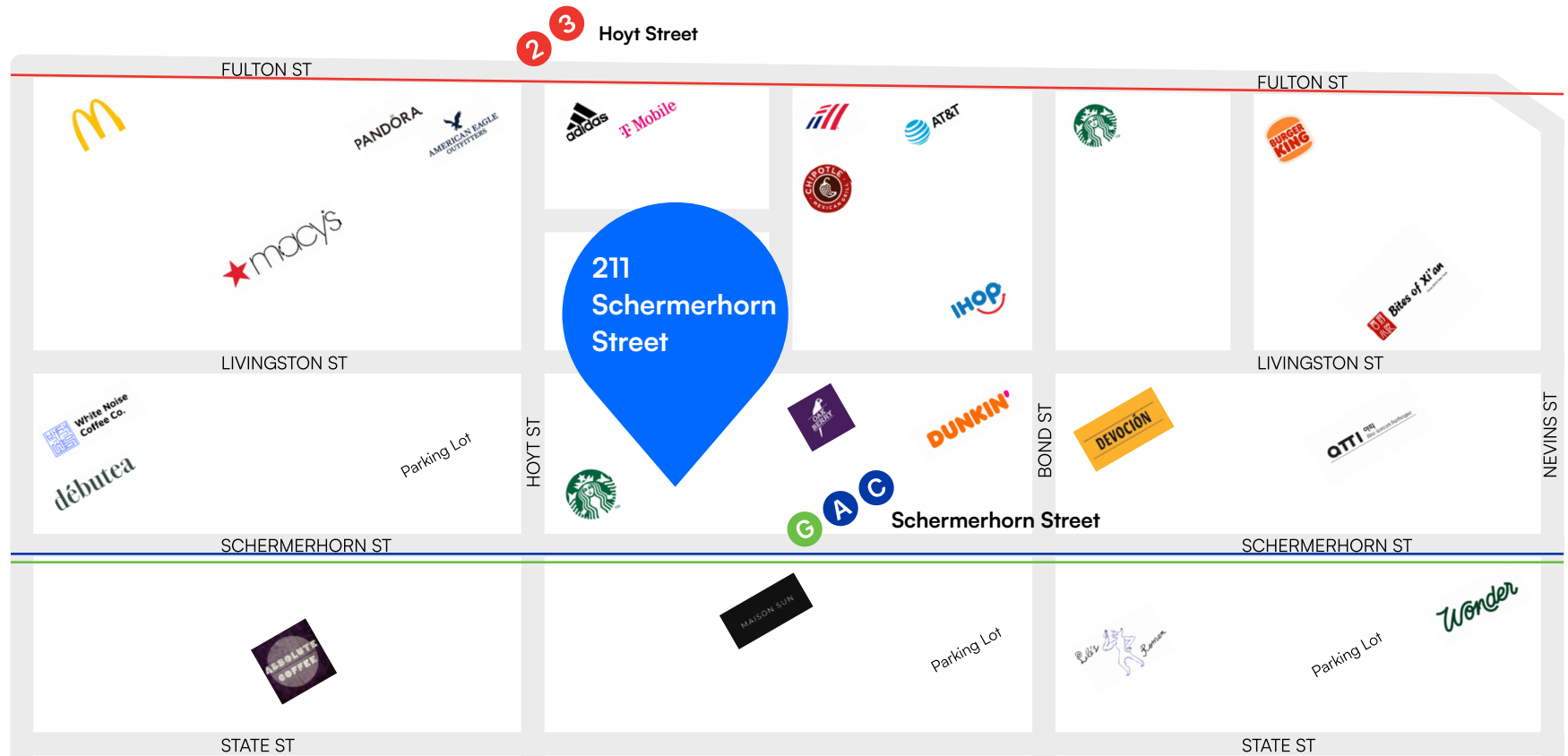
PROPERTY PHOTOS



PROPERTY PHOTOS



RETAIL MAP



211 SCHERMERHORN STREET, BROOKLYN, NY 11201

2,600 – 5,680 SF NEW DEVELOPMENT RETAIL SPACE WITH GLASS FRONTAGE

Between Hoyt Street & Bond Street

For Pricing Call: **212.433.3355**

SHLOMI BAGDADI
212.433.3355 x101
sb@tristatecr.com

LEO BEDA
212.433.3355 x103
leo.b@tristatecr.com

TSC.