

# FOR LEASE

AVAILABLE FOR OCCUPANCY NOW

2,300 SQUARE FEET GARDEN OFFICE SPACE



2,300 Square Feet - 11-41 N 400 W Payson, Utah 84651

**CORE** **UTAH**  
REAL ESTATE

[www.coreutah.com](http://www.coreutah.com)

## PROPERTY HIGHLIGHTS

- 2,300 Square Feet for Lease
- Lease Rate: \$8 NNN
- Large open area
- Kitchen
- 2 offices
- Build out option
- 2 Bathrooms
- 3 minutes to I-15
- 4 Minutes to Mountain View Hospital
- NOTE: Furniture in photos not included, but shows how space was previously laid-out efficiently

ICAL  
ES  
e Sleep  
orders  
Center

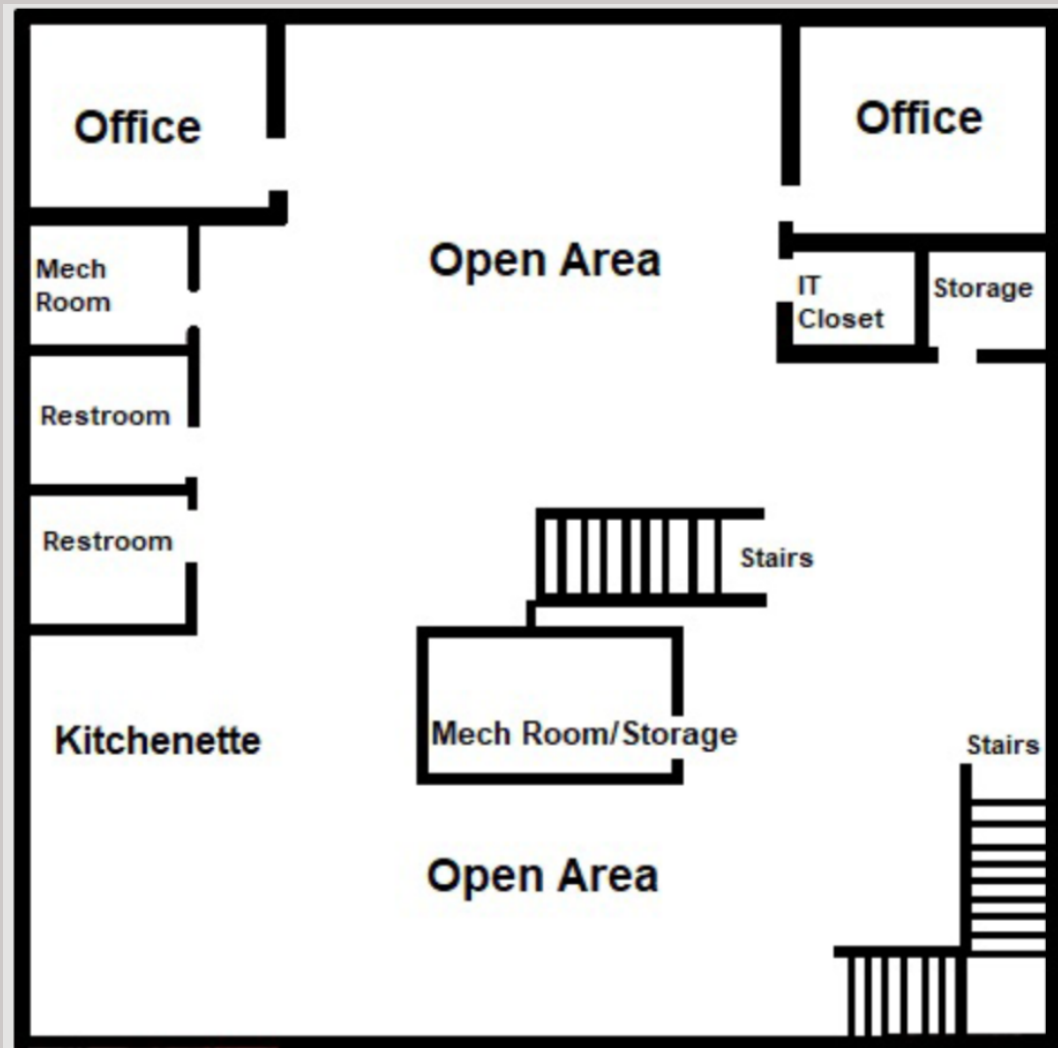
SU  
FOOT  
801-2  
Dr Je

# PROPERTY PHOTOS

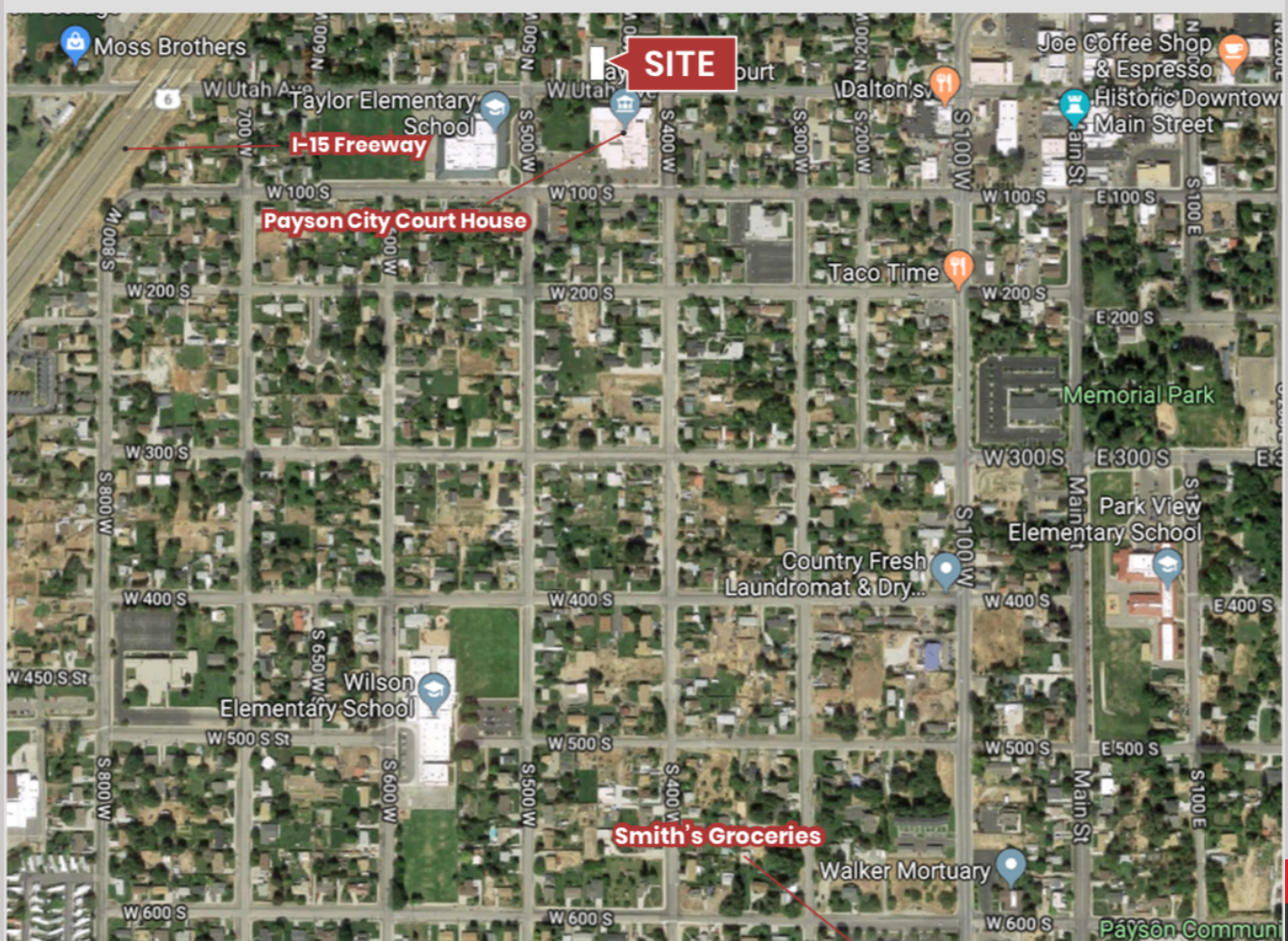




## FLOOR PLAN



\*



## DEMOGRAPHIC INFORMATION

	2 Mile	10 Mile
Total Population	21,279	112,490
Total Households	5,963	30,694
Median Age	27.3	26.9
Median HH Income	83,116	96,537
Avg Household Size	3.6	3.7
Annual Pop Growth '22-'27	2.8%	3.2%
Annual Hse Growth '22-'27	2.8%	3.0%

All Rights Reserved. The information contained herein has been carefully compiled from sources considered reliable; however, we make no guarantee, warranty, or representation of its accuracy. You and your tax and legal advisors should conduct your own investigation of the property and transaction.

**11-41 N 400 W Payson  
Utah, 84651**

**Caden Butterfield**  
Vice President Leasing  
385-350-1811  
caden@coreutah.com

**Aaron Cook, MBA**  
Principal Owner  
801-787-7255  
aaron@coreutah.com

**Kevin Ford, MBA**  
President Sales & Leasing  
801-473-6519  
kevin@coreutah.com

**CORE UTAH**  
REAL ESTATE