

598-20,000 SF
FOR LEASE



MEDICAL OFFICE



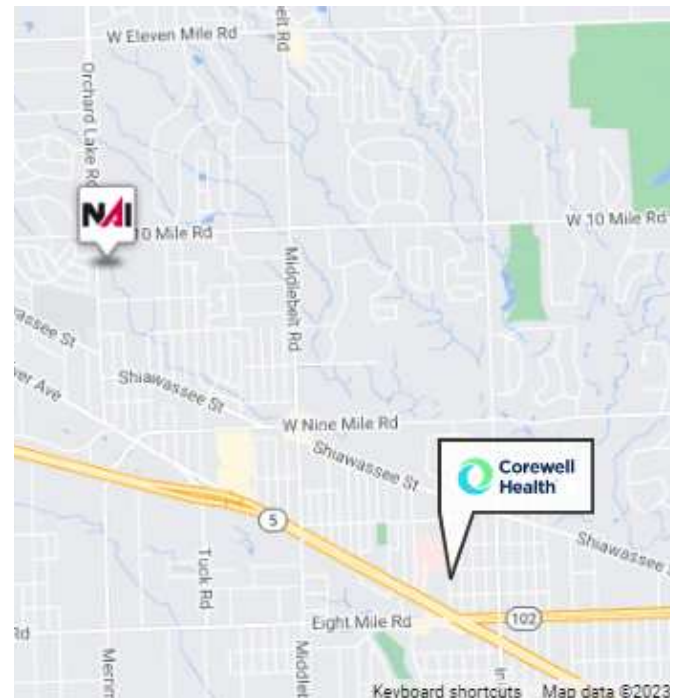
LOBBY AND COMMON AREAS RECENTLY RENOVATED

Orchard Lake Wellness Center

23800 Orchard Lake Road
Farmington, Michigan 48336

Property Highlights

- 598-20,000 SF Medical/Office Space For Lease
- 15,000 Contiguous Square Feet
- Prime Location just Minutes from I-696 and Beaumont (Corewell) Health
- Great frontage on Orchard Lake Rd with Monument Signage
- Smooth Ingress / Egress with Abundant Parking (146 Spaces)
- Flexible Floorplans with Various Size Suites



NAI Farbman

Commercial Real Estate Services, Worldwide.

www.naifarbman.com

Brad Margolis
Vice President | 248.351.4367
bmargolis@farbman.com

Jeff Cavazos
Senior Vice President | 248.613.6457
jcavazos@farbman.com

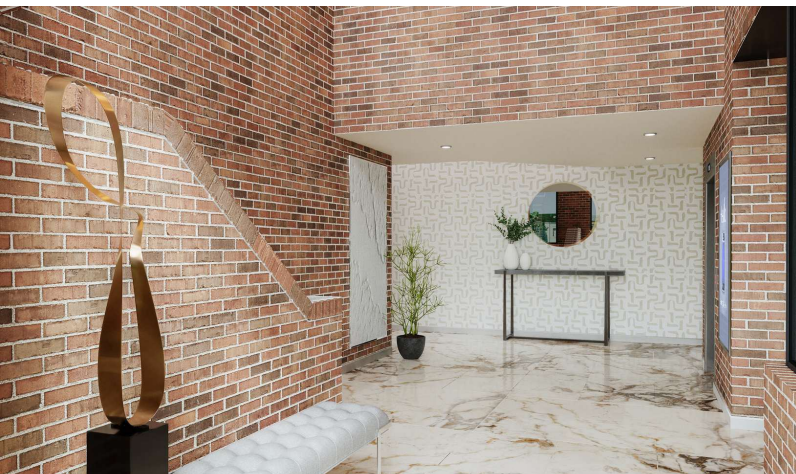
Kristi Lawton
Vice President | 248.798.9828
lawton@farbman.com

NO WARRANTY, EXPRESS OR IMPLIED, IS MADE AS TO THE ACCURACY OF THE INFORMATION CONTAINED HEREIN. THIS INFORMATION IS SUBMITTED SUBJECT TO ERRORS, OMISSIONS, CHANGE OF PRICE, RENTAL OR OTHER CONDITIONS, WITHDRAWAL WITHOUT NOTICE, AND IS SUBJECT TO ANY SPECIAL LISTING CONDITIONS IMPOSED BY OUR PRINCIPALS, COOPERATING BROKERS, BUYERS, TENANTS AND OTHER PARTIES WHO RECEIVE THIS DOCUMENT SHOULD NOT RELY ON IT, BUT SHOULD USE IT AS A STARTING POINT OF ANALYSIS, AND SHOULD INDEPENDENTLY CONFIRM THE ACCURACY OF THE INFORMATION CONTAINED HEREIN THROUGH A DUE DILIGENCE REVIEW OF THE BOOKS, RECORDS, FILES AND DOCUMENTS THAT CONSTITUTE RELIABLE SOURCES OF THE INFORMATION DESCRIBED HEREIN. LOGOS ARE FOR IDENTIFICATION PURPOSES ONLY AND MAY BE TRADEMARKS OF THEIR RESPECTIVE COMPANIES. NAI Farbman, INC. CA BRE LIC. #01990696.

598-20,000 SF FOR LEASE



MEDICAL OFFICE



NAI Farbman

Commercial Real Estate Services, Worldwide.

www.naifarbman.com

Brad Margolis
Vice President | 248.351.4367
bmargolis@farbman.com

Jeff Cavazos
Senior Vice President | 248.613.6457
jcavazos@farbman.com

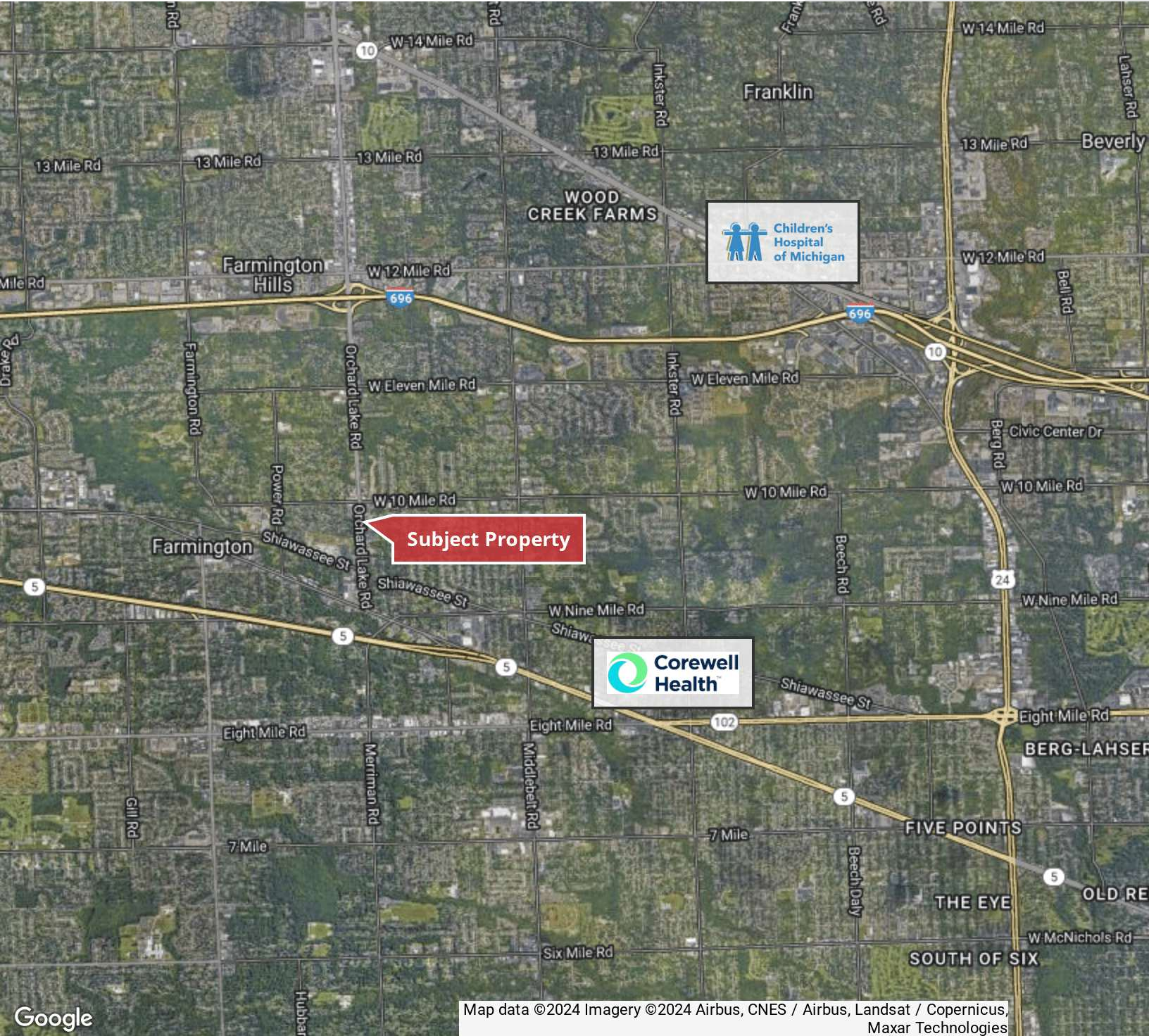
Kristi Lawton
Vice President | 248.798.9828
lawton@farbman.com

NO WARRANTY, EXPRESS OR IMPLIED, IS MADE AS TO THE ACCURACY OF THE INFORMATION CONTAINED HEREIN. THIS INFORMATION IS SUBMITTED SUBJECT TO ERRORS, OMISSIONS, CHANGE OF PRICE, RENTAL OR OTHER CONDITIONS, WITHDRAWAL WITHOUT NOTICE, AND IS SUBJECT TO ANY SPECIAL LISTING CONDITIONS IMPOSED BY OUR PRINCIPALS, COOPERATING BROKERS, BUYERS, TENANTS AND OTHER PARTIES WHO RECEIVE THIS DOCUMENT SHOULD NOT RELY ON IT, BUT SHOULD USE IT AS A STARTING POINT OF ANALYSIS, AND SHOULD INDEPENDENTLY CONFIRM THE ACCURACY OF THE INFORMATION CONTAINED HEREIN THROUGH A DUE DILIGENCE REVIEW OF THE BOOKS, RECORDS, FILES AND DOCUMENTS THAT CONSTITUTE RELIABLE SOURCES OF THE INFORMATION DESCRIBED HEREIN. LOGOS ARE FOR IDENTIFICATION PURPOSES ONLY AND MAY BE TRADEMARKS OF THEIR RESPECTIVE COMPANIES. NAI Farbman, INC. CA BRE LIC. #01990696.

598-20,000 SF FOR LEASE



MEDICAL OFFICE



Map data ©2024 Imagery ©2024 Airbus, CNES / Airbus, Landsat / Copernicus, Maxar Technologies



Commercial Real Estate Services. Worldwide.
www.naifarberman.com

Brad Margolis
Vice President | 248.351.4367
bmargolis@farbman.com

Jeff Cavazos
Senior Vice President | 248.613.6457
jcavazos@farbman.com

Kristi Lawton
Vice President | 248.798.9828
lawton@farbman.com

NO WARRANTY, EXPRESS OR IMPLIED, IS MADE AS TO THE ACCURACY OF THE INFORMATION CONTAINED HEREIN. THIS INFORMATION IS SUBMITTED SUBJECT TO ERRORS, OMISSIONS, CHANGE OF PRICE, RENTAL OR OTHER CONDITIONS, WITHDRAWAL WITHOUT NOTICE, AND IS SUBJECT TO ANY SPECIAL LISTING CONDITIONS IMPOSED BY OUR PRINCIPALS. COOPERATING BROKERS, BUYERS, TENANTS AND OTHER PARTIES WHO RECEIVE THIS DOCUMENT SHOULD NOT RELY ON IT, BUT SHOULD USE IT AS A STARTING POINT OF ANALYSIS, AND SHOULD INDEPENDENTLY CONFIRM THE ACCURACY OF THE INFORMATION CONTAINED HEREIN THROUGH A DUE DILIGENCE REVIEW OF THE BOOKS, RECORDS, FILES AND DOCUMENTS THAT CONSTITUTE RELIABLE SOURCES OF THE INFORMATION DESCRIBED HEREIN. LOGOS ARE FOR IDENTIFICATION PURPOSES ONLY AND MAY BE TRADEMARKS OF THEIR RESPECTIVE COMPANIES. NAI Farberman, INC. CA BRE LIC. #01990696.

598-20,000 SF
FOR LEASE



MEDICAL OFFICE

1st Floor
Suite 105
2,686 SF Available



NAI Farberman

Commercial Real Estate Services, Worldwide.

www.naifarberman.com

Brad Margolis
Vice President | 248.351.4367
bmargolis@farberman.com

Jeff Cavazos
Senior Vice President | 248.613.6457
jcavazos@farberman.com

Kristi Lawton
Vice President | 248.798.9828
lawton@farberman.com

NO WARRANTY, EXPRESS OR IMPLIED, IS MADE AS TO THE ACCURACY OF THE INFORMATION CONTAINED HEREIN. THIS INFORMATION IS SUBMITTED SUBJECT TO ERRORS, OMISSIONS, CHANGE OF PRICE, RENTAL OR OTHER CONDITIONS, WITHDRAWAL WITHOUT NOTICE, AND IS SUBJECT TO ANY SPECIAL LISTING CONDITIONS IMPOSED BY OUR PRINCIPALS. COOPERATING BROKERS, BUYERS, TENANTS AND OTHER PARTIES WHO RECEIVE THIS DOCUMENT SHOULD NOT RELY ON IT, BUT SHOULD USE IT AS A STARTING POINT OF ANALYSIS, AND SHOULD INDEPENDENTLY CONFIRM THE ACCURACY OF THE INFORMATION CONTAINED HEREIN THROUGH A DUE DILIGENCE REVIEW OF THE BOOKS, RECORDS, FILES AND DOCUMENTS THAT CONSTITUTE RELIABLE SOURCES OF THE INFORMATION DESCRIBED HEREIN. LOGOS ARE FOR IDENTIFICATION PURPOSES ONLY AND MAY BE TRADEMARKS OF THEIR RESPECTIVE COMPANIES. NAI Farberman, INC. CA BRE LIC. #01989096.

598-20,000 SF FOR LEASE



MEDICAL OFFICE

2nd Floor

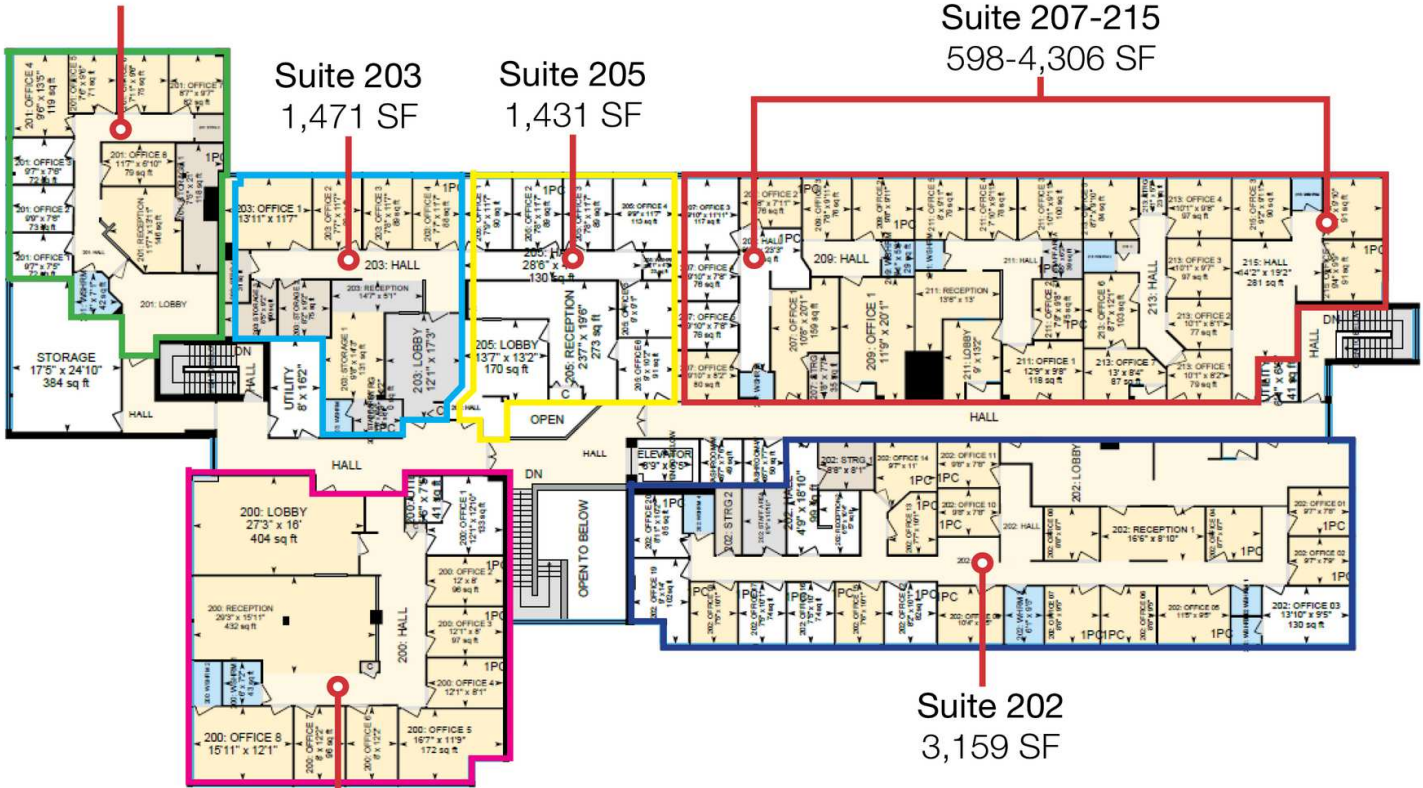
598-13,705 SF Available

Suite 201
1,595 SF

Suite 203
1,471 SF

Suite 205
1,431 SF

Suite 207-215
598-4,306 SF



Suite 202
3,159 SF

Suite 200
2,410 SF